

Grundfos Water Pressure Boosting Products

Price List June 2022

Category 3B



PRODUCTS INCLUDED:

Hydro GTI/Multi E/MPC-E

SCALA2

JP5

Pressurisation units

Byepac CM

Expansion Tanks Sensors



be
think
innovate

GRUNDFOS 

PLEASE NOTE THE FOLLOWING FROM OUR TERMS AND CONDITIONS OF SALE:

A copy of our full terms and conditions are available at the back of this price list & all prices are delivered at place (DAP) and subject to VAT at the standard rate.

MINIMUM ORDER VALUE

Our minimum order value is **£55.00 NET**. Orders between the minimum order value and the low order threshold of **£335.00 NET** for pumps or **£130.00 NET** for Category 4, S1,S2,S3,S4 items will be subject to a **£37.00 NET** handling fee.

EXPRESS DELIVERY OPTIONS;

INTERSPEED (PER ITEM) (above **150 Kgs** – subject to transport availability and additional cost)

- CR(I)(E), CRN(E) Vertical Multistage
- Non-stock SP/SPA models (with or without drop cable cut in 5 metre increments. Please note; resin cable joint will take 24 hours to set)
- Order must be received electronically by **10.45am** – despatch same day, **delivery by Express Carrier Service** – UK (*note restrictions apply)
£120.00 NET (PER ITEM)

BOXSPEED (PER ITEM) – (above **100 Kgs** – subject to transport availability and additional cost)

- ALPHA, UPS, UPN, UPS3/UPM Circulators
- Magna (D) Glandless Circulators
- UP/UPS/Magna Replacement Heads/Terminal boxes
- TPE(D), NB(E) Glanded
- CM, CME Horizontal Multistage
- JP, MQ and Tanks/Vessels (up to 500 Litre)
- CMB(E), Boosters, Scala
- AP, KP, CC, SL1, SLV, Unilift, Sololift
- SQ, SQE, SB(A), SP2A, 3A & 5A >1.5kW (Excluding pumps with cable fitted as well as SP longer than 2.4 metres)
- Motors, Flanges & Unions, Pump Components, Chamber Stacks
- Order must be received electronically before **13:30pm** – despatch same day, **delivery by Express Carrier Service** – UK (*note restrictions apply)
FIRST ITEM - £90.00 NET & ADDITIONAL ITEMS £40.00 EACH (PER ORDER)

SPARESPEED (PER ITEM)

- Only applies to spares kits, (not chamber stacks, components, pump heads or terminal boxes)
- Order must be received electronically before **13:30pm** – despatch same day, **delivery by Express Carrier Service** – UK (*note restrictions apply)
FIRST ITEM - £75.00 NET & ADDITIONAL ITEMS £35.00 EACH (PER ORDER)

* Express Carrier Service ONLY guaranteed if placed on time via Extranet/EDI. Deliveries to the Highlands, certain mainland post codes and offshore UK may take an extra day. All services are dependent on component and product availability. Grundfos can guarantee despatch or availability for collection same day but cannot guarantee delivery. Grundfos cannot accept any cancellations or amendments once the goods have been despatched. Cancellations are subject to the Product Returns Fee below. **BREXIT - Express delivery cut off times for deliveries into the UK from an EU have changed from 1:30PM to 10:00AM & all deliveries to Northern Ireland will all be despatched from our DC in Sunderland only.**

SPARES STANDARD DELIVERY CHARGE

- A **£30.00 NET** handling fee will be applied, per order, to all orders for spares, pump components, spares kits.
- This charge does NOT apply if **SPARESPEED**, express service or our online ordering system (EDI), and/or Extranet are used for order placement.

PRODUCT RETURNS FEE

- On receipt of written agreement from Grundfos, items can be returned and will be subject to a minimum **35%** restocking fee. Goods must be returned in their original packaging and within **6 months of date of despatch**. All returns will be subject to inspection, to ascertain age, condition and product type and can incur an increased restocking charge. Please contact grundfos-uk@sales.grundfos.com with the original purchase order, to arrange collection. Do not send items to Grundfos as they will be refused delivery, collection will be arranged.

Exclusions to Product Returns apply;

- Items with a NET value of £150.00 or less (per item).
- All Service kits, cable including attached to pump, assembled/engineered to order product and obsolete/phased out product cannot be returned.

STORAGE CHARGE

- There will be a **2%** storage charge of the item invoice value, payable per month, commencing one month from the date the goods were available for delivery from Grundfos.

WARRANTY PERIOD

- Grundfos pumps are warranted for 24 months from installation or 30 months from manufacture; whichever is the sooner.
- There is a five-year warranty that covers manufacturing or material defects on domestic heating circulators: UPS3 15-50/65, UPS2 15-50/60, ALPHA models, Amazon & Amazon Universal shower pumps. From 1st March 2017 SCALA2 booster pumps when used in domestic applications were included.
- From 1st February 2020 there is a 5 year guarantee scheme Grundfos Go Guarantee, available on all MAGNA3, TPE, NBE and NKE models (conditions apply).

SERVICE AND COMMISSIONING

Grundfos offers a wide range of service, repair and commissioning options. Please contact Service on 01525 850000 or email service-uk@sales.grundfos.com

ORDER TRACKING AND PROOF OF DELIVERY

- Order status and Proof of Delivery can be obtained via Grundfos Extranet or MyGrundfos online portals.
- For extranet access contact grundfos-uk@sales.grundfos.com. Self-registration for MyGrundfos can be found here; <https://uk.grundfos.com/mygrundfos>

INDEX

	Page
BOOSTER SET ANCILLARY EQUIPMENT	4
EXPANSION TANKS	6
COMPACT WATER BOOSTER PUMP	SCALA1 / SCALA2 7
JET PUMP AND CONTROLS	JP4 / PRESSURE MANAGER 8
MULTI-PUMP BOOSTER SETS	HYDRO MULTI-E 2 PUMP (3ph) 9
	HYDRO MULTI-E 3 PUMP (3ph) 10
	HYDRO MULTI-E 4 PUMP (3ph) 11
	HYDRO MULTI-E 2 PUMP (1ph) 12
	HYDRO MULTI-E 3 PUMP (1ph) 12
	HYDRO MULTI-E 4 PUMP (1ph) 13
	HYDRO MPC-E 2 PUMP 14
	HYDRO MPC-E 3 PUMP 16
	HYDRO MPC-E 4 PUMP 18
	HYDRO MPC-E 5 PUMP 20
	HYDRO MPC-E 6 PUMP 21
WATER TRANSFER SETS	CM BYEPAC 22
HYDRO GTI BOOSTER SETS	23
GRUNDFOS PRESSURISATION	PHT-A 25
PRESSURISATION MODULAR CONTROLLER	PHP-A 26
PRESSURISATION DEGASSING UNITS	27
PRESSURISATION PRIMARY, AUXILLIARY AND INTERMEDIATE VESSELS.	28
PRESSURISATION - AIR SEPARATION	29
PRESSURISATION - DIRT SEPARATION	29
PRESSURISATION - AIR & DIRT SEPARATION	29
GRUNDFOS VORTEX FLOW SENSORS	30
GRUNDFOS DIFFERENTIAL PRESSURE SENSORS	32
GRUNDFOS INDUSTRIAL SENSORS ACCESSORIES	33
CONDITIONS OF SALE	35

CATEGORY 3 - BOOSTER SET ANCILLARY EQUIPMENT

TANK FLOAT SWITCH

Item	£	Product Code
Low Level Switch c/w 5mtrs of cable type AT920	137	GBPS0099

PRESSURE SWITCH

	£	Product Code
-0.2 - 8 bar Pressure Switch (e.g. for suction pressure monitoring)	278	GBPS0010

PRESSURE TRANSDUCER - SINGLE POINT (NO CABLE)

	Fittings	Transducer	£	Product Code
Danfoss MBS3000	1/2" BSPM	0-2.5 bar	294	99033768
Danfoss MBS3000	1/2" BSPM	0-4 bar	294	96637450
Danfoss MBS3000	1/2" BSPM	0-6 bar	294	96637451
Danfoss MBS3000	1/2" BSPM	0-10 bar	294	96637452
Danfoss MBS3000	1/2" BSPM	0-16 bar	294	96637453
Danfoss MBS3000	1/2" BSPM	0-25 bar	296	91072079
Danfoss MBS 3000	1/2" BSPM	0-40 bar	677	96483573
Danfoss MBS 3000	1/2" BSPM	0-60 bar	677	96483574

Note : All transmitters have a 4 to 20 mA signal output.

Note - The above Switches and Pressure Transducers are Category 4 spares items for discount purposes.

AnTi-SURGE VALVE

	£	Product Code
Grundfos 1" AnTi-Surge Valve	1,982	92513956

PIPE COMPENSATORS - FOR POTABLE WATER APPLICATIONS

Stainless steel hose.

Rated at 16 bar (24 bar test pressure)

	£	Product Code
2" Screwed BSPM	380	97522730
2½" Screwed BSPM	676	97522731
25mm Screwed BSPM	121	97522727
32mm Screwed BSPM	168	97522728
40mm Screwed BSPM	172	97522729
50mm Flanged PN16	527	97522734
65mm Flanged PN16	978	97522735
80mm Flanged PN16	1,181	97522736
100mm Flanged PN16	1,398	97522737
125mm Flanged PN16	1,204	97522738
150mm Flanged PN16	2,591	97522739
200mm Flanged PN16	2,195	97522740

GRUNDFOS GO REMOTE

The Grundfos Go Remote is used wireless infrared or radio communication with the pumps.

Model		£	Product Code
MI 301	Universal dongle for iOS and Android based Smartphones	461	98046408



Note - The above valves, pipe compensators and the Grundfos GO are Category 4 spares items for discount purposes.

BOOSTER SET ANCILLARY EQUIPMENT

ADJUSTING LEVEL SHOES FOR BOOSTER SETS

Item	£	Product Code
Vibration Damper cpl. CR(E) 3/5, options	101	96412344
Vibration Damper cpl. CR(E) 10/20 , options	154	96412345
Vibration Damper cpl. CR(E) 32/90, options	252	96412347

Anti-vibration mounts are available for booster sets. Prices are per individual damper and allow for the system to be height adjusted by +/- 20mm. Please refer to the Grundfos Product Center as different sets require different amounts of dampers.

ADJUSTING LEVEL SHOES FOR MPC BOOSTER SETS GUIDE

MPC Booster Sets 2 pumps and below - four Vibration Dampeners

MPC Booster Sets 3 pumps and above - six Vibration Dampeners

COMMISSIONING

As our booster sets are built to the highest engineering standards, we strongly recommend they are commissioned by Grundfos Service Engineers to ensure they perform to the design criteria. Full details available from Grundfos Sales Offices or call Grundfos Service direct on 01942 263628

DELIVERY CHARGES

All prices quoted for pressurisation and booster sets are ex-works from Sunderland (GBW).

Delivery charges are available upon request.

WITNESS TESTING OF THE UNITS IS AVAILABLE AS FOLLOWS:-

Witness Test Certificates not involving customers	POA
Witness Test in the presence of the customer and to his time and date	POA

Booster sets that can deliver higher pressure and/or volume are also available on request.

CATEGORY 3 - COLD WATER EXPANSION TANKS

COLD WATER DIAPHRAGM TANKS - WRAS APPROVED

GT - H / GT - D

10 bar rated, 70° C

Model	£	Product Code
Vertical - GT-H-8-V	91	96526321
Vertical - GT-H-12-V	112	96528336
Vertical - GT-H-18-V	117	96528337
Vertical - GT-H-24-V	125	96528339
Vertical - GT-H-33-V	227	96528340
Vertical - GT-H-60-V	373	96528341
Horizontal - GT-H-24-H	115	96528388
Horizontal - GT-H-60-H	437	96528389
Horizontal - GT-H-80-H	485	96528390

Model	£	Product Code
Vertical - GT-D-80-V	437	96894291
Vertical - GT-D-100-V	520	97527968
Vertical - GT-D-130-V	702	96528344
Vertical - GT-D-200-V	958	97792897
Vertical - GT-D-240-V	1,031	96528346
Vertical - GT-D-300-V	1,171	96528347
Vertical - GT-D-450-V	2,075	96528348

GT-H-xxV, GT-H-xxH and GT-D-xxV tanks are all WRAS approved.

All Grundfos GT tanks are either single or double diaphragm dependant on type.

COLD WATER BLADDER TANKS - WRAS APPROVED

GT - U

10 bar rated, 70° C

Model	£	Product Code
Vertical - GT-U-500-V	1,873	96573280
Vertical - GT-U-600-V	3,976	96603451
Vertical - GT-U-800-V	4,815	96603452
Vertical - GT-U-1000-V	5,332	96603453
Vertical - GT-U-1500-V	9,256	96573283
Vertical - GT-U-2000-V	13,838	96573284
Vertical - GT-U-3000-V	21,221	96573285
Vertical - GT-U-4000-V	31,684	96603454
Vertical - GT-U-5000-V	40,793	96603456

16 bar rated, 70° C

Model	£	Product Code
Vertical - GT-U- 12V	103	96573348
Vertical - GT-U- 25V	155	96573349
Vertical - GT-U- 80V	990	96603420
Vertical - GT-U- 100V	1,043	96603421
Vertical - GT-U- 200V	1,765	96603422
Vertical - GT-U- 300V	1,953	96603423
Vertical - GT-U- 400V	2,095	96603424
Vertical - GT-U- 500V	2,506	96603425
Vertical - GT-U- 600V	4,423	96603426
Vertical - GT-U- 800V	5,733	96603427
Vertical - GT-U- 1000V	6,358	96603428
Vertical - GT-U- 1500V	22,131	96603429
Vertical - GT-U- 2000V	23,575	96603430
Vertical - GT-U- 3000V	33,874	96603431
Vertical - GT-U- 4000V	45,162	96603432
Vertical - GT-U- 5000V	POA	96603433



Grundfos GT-U tanks have replaceable bladders

GT-U-xxV tanks are all WRAS approved.

25 bar rated, 70° C

Model	£	Product Code
Vertical GT-U- 8V	152	96573347

CATEGORY 3 - HOT WATER EXPANSION TANKS

Model	£	Product Code
-------	---	--------------

GT HOT WATER DIAPHRAGM TANKS

6 bar rated, 90° C

GT-HR-50 V	200	96573395
GT-HR-80 V	323	96573396
GT-HR-100 V	384	96573397
GT-HR-140 V	500	96573398
GT-HR-200 V	733	96573399
GT-HR-250 V	909	96573400
GT-HR-300 V	972	96573401
GT-HR-400 V	1,320	96573403
GT-HR-500 V	1,587	96573404
GT-HR-600 V	1,953	96573405
GT-HR-800 V	2,782	96573407
GT-HR-1000 V	3,460	96573408

All Grundfos GT-HR diaphragm tanks are CE marked.

Grundfos GT-HR tanks have non replaceable diaphragms.

Grundfos GT-HR and GTU+ tanks are for use in LTHW or chilled water systems with appropriate water treatment.

Grundfos GT-U+ tanks have replaceable bladders

GT-U+-xxV tanks are all WRAS approved.

GT-HR / GT-U+

10 bar rated, 90° C

Vertical - GT-U+ - 100V	401	99082696
Vertical - GT-U+ - 150V	600	99082697
Vertical - GT-U+ - 200V	906	99082698
Vertical - GT-U+ - 300V	1,198	99082699
Vertical - GT-U+ - 500V	1,815	99082700
Vertical - GT-U+ - 750V	4,161	99082701
Vertical - GT-U+ - 1000V	4,003	99082702
Vertical - GT-U+ - 1500V	5,212	99082703
Vertical - GT-U+ - 2000V	9,754	99082704

16 bar rated, 90° C

Vertical - GT-U+ - 100V	923	99082706
Vertical - GT-U+ - 150V	1,336	99082707
Vertical - GT-U+ - 200V	1,467	99082708
Vertical - GT-U+ - 300V	1,508	99082709
Vertical - GT-U+ - 500V	2,620	99082710
Vertical - GT-U+ - 750V	3,057	99082711
Vertical - GT-U+ - 1000V	5,083	99082712
Vertical - GT-U+ - 1500V	6,625	99082713
Vertical - GT-U+ - 2000V	10,276	99082714
Vertical - GT-U+ - 3000V	15,875	99082715



CATEGORY 3 - AUTOMATIC WATER SUPPLY PUMP

SCALA1 - COMPACT FIXED SPEED HOME WATER BOOSTER PUMP



240V 1ph 50Hz	£	Product Code
SCALA1 3-35	POA	99530409
SCALA1 3-45	POA	99530410
SCALA1 5-55	POA	99530412

Sizing – up to three floors and eight standard domestic outlets

* Pallet quantity = 14

Note: Two pumps can be combined to a double pump booster set for duty assist (higher flow) or duty standby (100% backup pump) (see accessories)



SCALA2 - COMPACT VARIABLE SPEED HOME WATER BOOSTER PUMP



Model	240V 1ph 50Hz	
	£	Product Code
SCALA2 3-45 A	805	98562865

Sizing – up to three floors and eight standard domestic outlets

* Pallet quantity = 14



SCALA1/SCALA2 - ACCESSORIES

	£	Product Code
Connection Hose 1 inch RP/ speedfit	21	97894516
Conversion kit for Scala1 twin - duty assist booster set	518	99725165

Note:- The conversion kit is for **SCALA1 only**. Pumps are not included

Conversion Kit includes

Isolation valves
Manifold cap with o-ring
Inlet/outlet manifolds **RP1"**
Communication cable
Twin baseplate
Fixing screws



Inlet filter - 250 micron RP1"	70	99725183
---------------------------------------	----	----------

CATEGORY 3 - JP SINGLE STAGE JET PUMPS, KITS AND PRESSURE MANAGER

JP Single Stage Jet Pump WRAS APPROVED

230-240V 1ph 50Hz

Model	£	Product Code
JP 4-54	561	99458789



PRESSURE MANAGER

1 x 220-240 V, 50/60 Hz

Model		Max current	£	Product Code
PM1 15	cut in 1.5bar, cut out at no flow.	6A	255	96848670
PM1 22	cut in 2.2bar, cut out at no flow.	6A	255	96848701
PM2	cut in variable from 1.5 to 5.5bar, cut out at no flow.	10A	294	96848738

Max liquid temperature: 40°C

Max ambient temperature: 50°C



		£	Product Code
Pressure tank (additional to PM2)	8 Litre vertical tank	91	96526321

OTHER ACCESSORIES

		£	Product Code
Float level switch		137	GBPS0099
Spring loaded foot valves in Cast iron	1" BSPF	112	956110
	1 1/4" BSPF	170	956112

CATEGORY 3 - HYDRO MULTI-E TWO PUMP BOOSTER SETS (3ph)

IE5 Permanent magnet motors - added functionality

415V 3ph 50Hz

Model	Electric Motor per pump kW	Manifold size	Closed Valve (bar)	£	Product Code
Hydro Multi-E 2 CME3-5 , 3 X 400/230V	1.1	R 1 1/2	6.3	9,038	98486648
Hydro Multi-E 2 CME5-4 , 3 X 400V	1.5	R 2	5.3	10,466	98486695
Hydro Multi-E 2 CME5-6 , 3 X 400V	2.2	R 2	8.3	11,611	98486750
Hydro Multi-E 2 CME10-2 , 3 X 400V	2.2	R 2 1/2	4.5	12,657	98486751
Hydro Multi-E 2 CME15-1 , 3 X 400V	2.2	DN 80	2.4	15,590	98507199
Hydro Multi-E 2 CME5-8 , 3 X 400V	3	R 2 1/2	10.2	12,746	99133605
Hydro Multi-E 2 CME10-3 , 3 X 400V	4	R 2 1/2	6.8	14,776	99133611
Hydro Multi-E 2 CME10-4 , 3 X 400V	5.5	R 2 1/2	9.4	16,010	99133617
Hydro Multi-E 2 CME10-5 , 3 X 400V	5.5	R 2 1/2	11.5	16,268	99133622
Hydro Multi-E 2 CME15-2 , 3 X 400V	4	DN 80	4.9	17,709	99133627
Hydro Multi-E 2 CME15-3 , 3 X 400V	7.5	DN 80	7.5	20,148	99133634

IE5 Permanent magnet motors - added functionality

				£	Product Code
Hydro Multi-E 2 CRIE1-4 , 3 X 400/230V	0.37	R 2	3.4	9,640	98486537
Hydro Multi-E 2 CRIE1-6 , 3 X 400/230V	0.55	R 2	5.1	9,589	98486567
Hydro Multi-E 2 CRIE1-9 , 3 X 400/230V	0.75	R 2	7.7	10,153	98486613

IE5 Permanent magnet motors - added functionality

				£	Product Code
Hydro Multi-E 2 CRIE3-2 , 3 X 400/230V	0.37	R 2	1.8	9,098	98486539
Hydro Multi-E 2 CRIE3-4 , 3 X 400/230V	0.55	R 2	3.6	9,387	98486569
Hydro Multi-E 2 CRIE3-5 , 3 X 400/230V	0.75	R 2	4.5	9,783	98486615
Hydro Multi-E 2 CRIE3-8 , 3 X 400/230V	1.1	R 2	7.3	10,376	98486672
Hydro Multi-E 2 CRIE3-11 , 3 X 400/230V	1.5	R 2	10.2	11,605	98486720

IE5 Permanent magnet motors - added functionality

				£	Product Code
Hydro Multi-E 2 CRIE5-2 , 3 X 400/230V	0.55	R 2	1.8	9,347	98486581
Hydro Multi-E 2 CRIE5-4 , 3 X 400/230V	1.1	R 2	3.9	9,989	98486674
Hydro Multi-E 2 CRIE5-5 , 3 X 400/230V	1.5	R 2	4.9	11,022	98486722
Hydro Multi-E 2 CRIE5-9 , 3 X 400V	2.2	R 2	10.9	13,226	98486772
Hydro Multi-E 2 CRIE5-12 , 3 X 400V	3	R 2	11.7	14,206	99133112

IE5 Permanent magnet motors - added functionality

				£	Product Code
Hydro Multi-E 2 CRIE10-1 , 3 X 400/230V	0.75	R 2 1/2	1.3	10,039	98486617
Hydro Multi-E 2 CRIE10-2 , 3 X 400/230V	1.5	R 2 1/2	2.9	11,449	98486724
Hydro Multi-E 2 CRIE10-3 , 3 X 400V	2.2	R 2 1/2	4.4	13,482	98486773

IE5 Permanent magnet motors - added functionality

				£	Product Code
Hydro Multi-E 2 CRIE10-5 , 3 X 400V	3	R 2 1/2	7.2	14,446	99133117
Hydro Multi-E 2 CRIE10-6 , 3 X 400V	4	R 2 1/2	8.7	16,472	99133136
Hydro Multi-E 2 CRIE10-9 , 3 X 400V	5.5	R 2 1/2	13.0	18,949	99133182

IE5 Permanent magnet motors - added functionality

				£	Product Code
Hydro Multi-E 2 CRIE15-1 , 3 X 400/230V	1.5	DN 80	1.8	13,647	98486726
Hydro Multi-E 2 CRIE15-2 , 3 X 400V	3	DN 80	3.9	16,584	99133201
Hydro Multi-E 2 CRIE15-3 , 3 X 400V	4	DN 80	6.0	18,495	99133206
Hydro Multi-E 2 CRIE15-4 , 3 X 400V	5.5	DN 80	7.9	20,670	99133210
Hydro Multi-E 2 CRIE15-5 , 3 X 400V	7.5	DN 80	10.0	22,944	99133229
Hydro Multi-E 2 CRIE15-7 , 3 X 400V	7.5	DN 80	15.3	25,216	99132950

IE5 Permanent magnet motors - added functionality

				£	Product Code
Hydro Multi-E 2 CRIE20-1 , 3 X 400V	2.2	DN 80	1.9	15,649	98486774
Hydro Multi-E 2 CRIE20-2 , 3 X 400V	4	DN 80	4.1	18,495	99133235
Hydro Multi-E 2 CRIE20-3 , 3 X 400V	5.5	DN 80	6.1	20,733	99133255
Hydro Multi-E 2 CRIE20-4 , 3 X 400V	7.5	DN 80	8.3	23,255	99133601
Hydro Multi-E 3 CRIE20-7 , 3 X 400V	11	DN 80	14.4	25,777	99132966

Packaged booster sets come complete with stainless steel manifolds and an electrical panel complete with isolator and mcb's
Each pump incorporates an integral frequency converter drive, controlled in a cascade operation to maintain a constant pressure.

Additional models are available including special build variants. Please contact your local sales for further information

Recommended additional free standing vessel sizes as required against each pump size.

See page 6 for product codes and prices.

DataCommunication interface - Permanent magnet motors use CIM

CME / CRIE 3, 5, 10

Additional vessel not required.

CME / CRIE 15, 20

80 Litre



CATEGORY 3 - HYDRO MULTI-E THREE PUMP BOOSTER SETS (3ph)

IE5 Permanent magnet motors - added functionality

415V 3ph 50Hz

Model	Electric Motor per pump kW	Manifold size	Closed Valve (bar)	£	Product Code
Hydro Multi-E 3 CME3-3, 3 X 400/230V	1.1	R 1 1/2	4.1	12,028	98486656
Hydro Multi-E 3 CME5-4, 3 X 400V	1.5	R 2	5.7	14,543	98486707
Hydro Multi-E 3 CME5-6, 3 X 400V	2.2	R 2	8.5	16,209	98486759
Hydro Multi-E 3 CME10-2, 3 X 400V	2.2	R 2 1/2	4.8	18,002	98486760
Hydro Multi-E 3 CME15-1, 3 X 400V	2.2	DN 100	2.7	23,282	98507200
Hydro Multi-E 3 CME5-8, 3 X 400V	3	R 2	11.2	17,807	99133606
Hydro Multi-E 3 CME10-3, 3 X 400V	4	R 2 1/2	7.2	21,075	99133614
Hydro Multi-E 3 CME15-2, 3 X 400V	4	DN 100	5.2	26,353	99133628

IE5 Permanent magnet motors - added functionality

				£	Product Code
Hydro Multi-E 3 CRIE1-4, 3 X 400/230V	0.37	R 2	3.4	12,869	98486541
Hydro Multi-E 3 CRIE1-6, 3 X 400/230V	0.55	R 2	5.1	12,792	98486583
Hydro Multi-E 3 CRIE1-9, 3 X 400/230V	0.75	R 2	7.7	13,583	98486619
Hydro Multi-E 3 CRIE1-13, 3 X 400/230V	1.1	R 2	11.0	14,933	99132897

IE5 Permanent magnet motors - added functionality

				£	Product Code
Hydro Multi-E 3 CRIE3-2, 3 X 400/230V	0.37	R 2	1.8	12,057	98486543
Hydro Multi-E 3 CRIE3-4, 3 X 400/230V	0.55	R 2	3.6	12,490	98486585
Hydro Multi-E 3 CRIE3-5, 3 X 400/230V	0.75	R 2	4.5	13,085	98486631
Hydro Multi-E 3 CRIE3-8, 3 X 400/230V	1.1	R 2	7.3	13,975	98486676
Hydro Multi-E 3 CRIE3-11, 3 X 400/230V	1.5	R 2	10.2	15,761	98486728

IE5 Permanent magnet motors - added functionality

				£	Product Code
Hydro Multi-E 3 CRIE5-2, 3 X 400/230V	0.55	R 2	1.8	12,892	98486587
Hydro Multi-E 3 CRIE5-4, 3 X 400/230V	1.1	R 2	3.9	13,386	98486678
Hydro Multi-E 3 CRIE5-5, 3 X 400/230V	1.5	R 2	4.9	14,934	98486730
Hydro Multi-E 3 CRIE5-9, 3 X 400V	2.2	R 2	10.9	18,156	98486777
Hydro Multi-E 3 CRIE5-12, 3 X 400V	3	R 2	11.7	19,623	99133114

IE5 Permanent magnet motors - added functionality

				£	Product Code
Hydro Multi-E 3 CRIE10-1, 3 X 400/230V	0.75	DN 80	1.3	13,095	98486633
Hydro Multi-E 3 CRIE10-2, 3 X 400/230V	1.5	DN 80	2.9	15,210	98486732
Hydro Multi-E 3 CRIE10-3, 3 X 400V	2.2	DN 80	4.4	18,219	98486778
Hydro Multi-E 3 CRIE10-5, 3 X 400V	3	DN 80	7.2	19,666	99133119
Hydro Multi-E 3 CRIE10-6, 3 X 400V	4	DN 80	8.7	22,670	99133138
Hydro Multi-E 3 CRIE10-9, 3 X 400V	5.5	DN 80	13.0	26,384	99133194

IE5 Permanent magnet motors - added functionality

				£	Product Code
Hydro Multi-E 3 CRIE15-1, 3 X 400/230V	1.5	DN 100	1.8	18,298	98486734
Hydro Multi-E 3 CRIE15-2, 3 X 400V	3	DN 100	3.9	22,664	99133204
Hydro Multi-E 3 CRIE15-3, 3 X 400V	4	DN 100	6.0	25,530	99133207
Hydro Multi-E 3 CRIE15-4, 3 X 400V	5.5	DN 100	7.9	28,825	99133223
Hydro Multi-E 3 CRIE15-5, 3 X 400V	7.5	DN 100	10.0	32,702	99133231

IE5 Permanent magnet motors - added functionality

				£	Product Code
Hydro Multi-E 3 CRIE20-1, 3 X 400V	2.2	DN 100	1.9	21,260	98486779
Hydro Multi-E 3 CRIE20-2, 3 X 400V	4	DN 100	4.1	25,530	99133253
Hydro Multi-E 3 CRIE20-3, 3 X 400V	5.5	DN 100	6.1	28,888	99133256
Hydro Multi-E 3 CRIE20-4, 3 X 400V	7.5	DN 100	8.3	32,702	99133603
Hydro Multi-E 3 CRIE20-7, 3 X 400V	11	DN 100	14.4	36,515	99132969

Packaged booster sets come complete with stainless steel manifolds and an electrical panel complete with isolator and pump mcb's.

Each pump incorporates an integral frequency converter drive, controlled in a cascade operation to maintain a constant pressure.

Additional models are available including special build variants. Please contact your local sales for further information

Recommended additional free standing vessel sizes as required against each pump size.

See page 6 for product codes and prices.

DataCommunication interface - Permanent magnet motors use CIM

CME / CRIE 3, 5, 10

Additional vessel not required.

CRIE 15, 20

80 Litre



CATEGORY 3 - HYDRO MULTI-E FOUR PUMP BOOSTER SETS (3ph)

IE5 Permanent magnet motors - added functionality

415V 3ph 50Hz

Model	Electric Motor per pump kW	Manifold size	Closed Valve (bar)	£	Product Code
Hydro Multi-E 4 CRIE1-4 , 3 X 400/230V	0.37	R 2 1/2	3.4	14,175	98486545
Hydro Multi-E 4 CRIE1-6 , 3 X 400/230V	0.55	R 2 1/2	5.1	14,070	98486589
Hydro Multi-E 4 CRIE1-9 , 3 X 400/230V	0.75	R 2 1/2	7.7	15,087	98486635
Hydro Multi-E 4 CRIE1-13 , 3 X 400/230V	1.1	R 2 1/2	11.0	16,863	99132908

IE5 Permanent magnet motors - added functionality

				£	Product Code
Hydro Multi-E 4 CRIE3-2 , 3 X 400/230V	0.37	R 2 1/2	1.8	13,091	98486547
Hydro Multi-E 4 CRIE3-4 , 3 X 400/230V	0.55	R 2 1/2	3.6	13,666	98486591
Hydro Multi-E 4 CRIE3-5 , 3 X 400/230V	0.75	R 2 1/2	4.5	14,461	98486637
Hydro Multi-E 4 CRIE3-8 , 3 X 400/230V	1.1	R 2 1/2	7.3	15,648	98486680
Hydro Multi-E 4 CRIE3-11 , 3 X 400/230V	1.5	R 2 1/2	10.2	17,991	98486736

IE5 Permanent magnet motors - added functionality

				£	Product Code
Hydro Multi-E 4 CRIE5-2 , 3 X 400/230V	0.55	R 2 1/2	1.8	13,573	98486593
Hydro Multi-E 4 CRIE5-4 , 3 X 400/230V	1.1	R 2 1/2	3.9	14,856	98486682
Hydro Multi-E 4 CRIE5-5 , 3 X 400/230V	1.5	R 2 1/2	4.9	16,920	98486738
Hydro Multi-E 4 CRIE5-9 , 3 X 400V	2.2	R 2 1/2	10.9	21,158	98486781
Hydro Multi-E 4 CRIE5-12 , 3 X 400V	3	R 2 1/2	11.7	23,115	99133116

IE5 Permanent magnet motors - added functionality

				£	Product Code
Hydro Multi-E 4 CRIE10-1 , 3 X 400/230V	0.75	DN 80	1.3	16,150	98486639
Hydro Multi-E 4 CRIE10-2 , 3 X 400/230V	1.5	DN 80	2.9	18,971	98486740
Hydro Multi-E 4 CRIE10-3 , 3 X 400V	2.2	DN 80	4.4	22,958	98486782
Hydro Multi-E 4 CRIE10-5 , 3 X 400V	3	DN 80	7.2	24,886	99133133
Hydro Multi-E 4 CRIE10-6 , 3 X 400V	4	DN 80	8.7	28,867	99133139
Hydro Multi-E 4 CRIE10-9 , 3 X 400V	5.5	DN 80	13.0	33,820	99133196

IE5 Permanent magnet motors - added functionality

				£	Product Code
Hydro Multi-E 4 CRIE15-1 , 3 X 400/230V	1.5	DN 100	1.8	23,259	98486742
Hydro Multi-E 4 CRIE15-2 , 3 X 400V	3	DN 100	3.9	29,055	99133205
Hydro Multi-E 4 CRIE15-3 , 3 X 400V	4	DN 100	6.0	32,878	99133208
Hydro Multi-E 4 CRIE15-4 , 3 X 400V	5.5	DN 100	7.9	37,292	99133227
Hydro Multi-E 4 CRIE15-5 , 3 X 400V	7.5	DN 100	10.0	42,460	99133234
Hydro Multi-E 4 CRIE15-7 , 3 X 400V	7.5	DN 100	13.8	47,629	99132963

IE5 Permanent magnet motors - added functionality

				£	Product Code
Hydro Multi-E 4 CRIE20-1 , 3 X 400V	2.2	DN 100	1.9	27,184	98486783
Hydro Multi-E 4 CRIE20-2 , 3 X 400V	4	DN 100	4.1	32,878	99133254
Hydro Multi-E 4 CRIE20-3 , 3 X 400V	5.5	DN 100	6.1	37,354	99133257
Hydro Multi-E 4 CRIE20-4 , 3 X 400V	7.5	DN 100	8.3	42,460	99133604
Hydro Multi-E 4 CRIE20-7 , 3 X 400V	11	DN 100	14.4	47,565	99132970

Packaged booster sets come complete with stainless steel manifolds and an electrical panel complete with isolator and pump mcb's.

Each pump incorporates an integral frequency converter drive, controlled in a cascade operation to maintain a constant pressure.

Additional models are available including special build variants. Please contact your local sales for further information

Recommended additional free standing vessel sizes as required against each pump size.

See page 6 for product codes and prices.

Data Communication interface - Permanent magnet motors use CIM

CRIE 3, 5, 10

Additional vessel not required.

CRIE 15, 20

80 Litre



CATEGORY 3 - HYDRO MULTI-E TWO PUMP BOOSTER SETS (1ph)

Model

240V 1ph 50Hz

Electric Motor	Closed			
per pump KW	Manifold size	Valve (bar)	£	Product Code
IES Permanent magnet motors - added functiona				
Hydro Multi-E 2 CRIE1-4	R 2	3.4	9,640	98584928
Hydro Multi-E 2 CRIE1-6	R 2	5.1	9,589	98584934
Hydro Multi-E 2 CRIE1-9	R 2	7.7	10,153	98584943
Hydro Multi-E 2 CRIE1-13	R 2	11.3	POA	98716952

IES Permanent magnet motors - added functionality

£	Product Code
Hydro Multi-E 2 CRIE3-2	9,098
Hydro Multi-E 2 CRIE3-4	9,387
Hydro Multi-E 2 CRIE3-5	9,783
Hydro Multi-E 2 CRIE3-8	10,376
Hydro Multi-E 2 CRIE3-11	11,605

IES Permanent magnet motors - added functionality

£	Product Code
Hydro Multi-E 2 CRIE5-2	9,347
Hydro Multi-E 2 CRIE5-4	9,989
Hydro Multi-E 2 CRIE5-5	11,022
Hydro Multi-E 2 CRIE10-1	9,296
Hydro Multi-E 2 CRIE10-2	11,449
Hydro Multi-E 2 CRIE15-1	12,636

Packaged booster sets come complete with stainless steel manifolds and an electrical panel complete with isolator and pumps mcb's. Each motor contains an integral frequency converter drive controlled in a cascade operation to maintain a constant pressure.

Additional models are available including special build variants. Please contact your local sales for further information

Recommended additional free standing vessel sizes as required against each pump size.

See page 6 for product codes and prices.

DataCommunication interface - Permanent magnet motors use CIM

CRIE 3, 5, 10

Additional vessel not required.

CRIE 15, 20

80 Litre



CATEGORY 3 - HYDRO MULTI-E THREE PUMP BOOSTER SETS (1ph)

Model

240V 1ph 50Hz

Electric Motor	Closed			
per pump KW	Manifold size	Valve (bar)	£	Product Code
IES Permanent magnet motors - added functiona				
Hydro Multi-E 3 CRIE1-4	R 2	3.4	12,869	98584930
Hydro Multi-E 3 CRIE1-6	R 2	5.1	11,845	98584937
Hydro Multi-E 3 CRIE1-9	R 2	7.7	12,576	98584946

IES Permanent magnet motors - added functionality

£	Product Code
Hydro Multi-E 3 CRIE3-2	11,164
Hydro Multi-E 3 CRIE3-4	11,564
Hydro Multi-E 3 CRIE3-5	13,085
Hydro Multi-E 3 CRIE3-8	13,975
Hydro Multi-E 3 CRIE3-11	15,761

IES Permanent magnet motors - added functionality

£	Product Code
Hydro Multi-E 3 CRIE5-2	11,503
Hydro Multi-E 3 CRIE5-4	13,386
Hydro Multi-E 3 CRIE5-5	14,934
Hydro Multi-E 3 CRIE10-1	12,125
Hydro Multi-E 3 CRIE10-2	14,084
Hydro Multi-E 3 CRIE15-1	16,943

Data Communication interface - Permanent magnet motors use CIM

Packaged booster sets come complete with stainless steel manifolds and an electrical panel complete with isolator and pumps mcb's. Each pump incorporates an integral frequency converter drive, controlled in a cascade operation to maintain a constant pressure.

Additional models are available including special build variants. Please contact your local sales for further information

Recommended additional free standing vessel sizes as required against each pump size.

See page 6 for product codes and prices.

CRIE 3, 5, 10

Additional vessel not required.

CRIE 15, 20

80 Litre



CATEGORY 3 - HYDRO MULTI-E FOUR PUMP BOOSTER SETS (1ph)

Model

240V 1ph 50Hz

Electric Motor	Manifold size	Closed Valve (bar)	£	Product Code
IE5 Permanent magnet motors - added functionality per pump kW				
Hydro Multi-E 4 CRIE1-4	R 2 1/2	3.4	13,125	98584932
Hydro Multi-E 4 CRIE1-6	R 2 1/2	5.1	13,028	98584940
Hydro Multi-E 4 CRIE1-9	R 2 1/2	7.7	13,970	98584949

IE5 Permanent magnet motors - added functionality

£	Product Code
Hydro Multi-E 4 CRIE3-2	98584933
Hydro Multi-E 4 CRIE3-4	98584941
Hydro Multi-E 4 CRIE3-5	98584950
Hydro Multi-E 4 CRIE3-8	98584966
Hydro Multi-E 4 CRIE3-11	98584976

IE5 Permanent magnet motors - added functionality

£	Product Code
Hydro Multi-E 4 CRIE5-2	98584942
Hydro Multi-E 4 CRIE5-4	92527112
Hydro Multi-E 4 CRIE5-5	98584977

IE5 Permanent magnet motors - added functionality

£	Product Code
Hydro Multi-E 4 CRIE10-1	98584961
Hydro Multi-E 4 CRIE10-2	98584978
Hydro Multi-E 4 CRIE15-1	98584979

Packaged booster sets come complete with stainless steel manifolds and an electrical panel complete with isolator and pumps mcb's. Each pump incorporates an integral frequency converter drive, controlled in a cascade operation to maintain a constant pressure.

Additional models are available including special build variants. Please contact your local sales for further information

Recommended additional free standing vessel sizes as required against each pump size.

See page 6 for product codes and prices.

Data Communication interface - Permanent magnet motors use CIM

CRIE 3, 5, 10

Additional vessel not required.

CRIE 15, 20

80 Litre



CATEGORY 3 - HYDRO MPC-E VARIABLE SPEED CRIE 2 PUMP BOOSTER SETS - WRAS APPROVED

2" STAINLESS STEEL MANIFOLDS | IE5 PERMANENT MAGNET MOTORS

230V 1Ph 50Hz Model	Electric Motor per pump kW	Base Plate	FLC (A) (per pump)	closed Valve(bar)	£	Product Code
Hydro MPC-E 2 CRIE3-2	0.37	1	2.4	1.8	12,108	98426890
Hydro MPC-E 2 CRIE3-4	0.55	1	2.4	3.6	12,391	98426893
Hydro MPC-E 2 CRIE3-5	0.75	1	4.5	4.3	12,791	98426896
Hydro MPC-E 2 CRIE3-8	1.1	1	6.6	7.0	13,500	98426899
Hydro MPC-E 2 CRIE5-2	0.55	1	3.4	1.8	12,334	98426908
Hydro MPC-E 2 CRIE5-4	1.1	1	6.6	3.7	13,086	98426911

2.5" STAINLESS STEEL MANIFOLDS | IE5 PERMANENT MAGNET MOTORS

230V 1Ph 50Hz	£	Product Code
Hydro MPC-E 2 CRIE10-1	13,335	98426923

2" STAINLESS STEEL MANIFOLDS | IE5 PERMANENT MAGNET MOTORS

400V 3Ph 50Hz	£	Product Code
Hydro MPC-E 2 CRIE3-11	14,997	98426902
Hydro MPC-E 2 CRIE5-5	14,499	98426914
Hydro MPC-E 2 CRIE5-9	15,653	98426917
Hydro MPC-E 2 CRIE5-12	17,081	99208231

2.5" STAINLESS STEEL MANIFOLDS | IE5 PERMANENT MAGNET MOTORS

400V 3Ph 50Hz	£	Product Code
Hydro MPC-E 2 CRIE10-2	15,230	98426928
Hydro MPC-E 2 CRIE10-3	16,307	98426933
Hydro MPC-E 2 CRIE10-5	17,718	99257322
Hydro MPC-E 2 CRIE10-6	19,593	99208283
Hydro MPC-E 2 CRIE10-9	21,627	99208302

DN80 STAINLESS STEEL MANIFOLDS | IE5 PERMANENT MAGNET MOTORS

400V 3Ph 50Hz	£	Product Code
Hydro MPC-E 2 CRIE15-1	17,020	98426953
Hydro MPC-E 2 CRIE15-2	19,480	99208340
Hydro MPC-E 2 CRIE15-3	21,335	99257334
Hydro MPC-E 2 CRIE15-4	23,157	99257335
Hydro MPC-E 2 CRIE15-5	27,766	99208380
Hydro MPC-E 2 CRIE20-1	18,166	98426983
Hydro MPC-E 2 CRIE20-2	21,457	99257337
Hydro MPC-E 2 CRIE20-3	23,306	99257338
Hydro MPC-E 2 CRIE20-4	27,947	99208432
Hydro MPC-E 2 CRIE20-6	32,487	99257229

Base plate

1 = Pumps and Control Panel are all mounted on one common base plate.

1 + 1 = Pumps and pipe work fittings are on one base plate and the control panel is mounted on a separate base plate.

Interconnecting electrical connections between pump motors and the control panel to be made on site as required.

Each pump incorporates an integral frequency converter drive, controlled in a cascade operation to maintain a constant pressure.

Additional models are available including special build variants. Please contact your local sales for further information

- User friendly Microprocessor Interface.
- Hands off/Auto operation via Microprocessor Interface.
- VFC's for run/fault indication to building management systems.
- PN16 rated pipework unless otherwise stated.
- 12 Litre Expansion vessel connected to discharge manifold. An additional free standing expansion vessel is recommended for building service applications.

ADJUSTING LEVEL SHOES FOR MPC BOOSTER SETS GUIDE-PLEASE SEE PAGE 5

Recommended additional free standing vessel sizes as required against each pump size.

See page 6 for product codes and prices.

CRIE 3, 5, 10	Additional vessel not required.
CRIE 15, 20, 32	80 Litre
CRIE 45, 64	130 Litre
CRIE 95	170 Litre



CATEGORY 3 - HYDRO MPC-E VARIABLE SPEED CRE 2 PUMP BOOSTER SETS - WRAS APPROVED

DN100 STAINLESS STEEL MANIFOLDS | IE5 PERMANENT MAGNET MOTORS

Model	Electric Motor per pump kW	Base Plate	FLC (A) (per pump)	closed Valve(bar)	£	Product Code
400V 3Ph 50Hz						
Hydro MPC-E 2 CRE32-1-1	2.2	1+1	4.6	1.5	20,813	98427008
Hydro MPC-E 2 CRE32-1	3	1+1	6.2	2.1	22,192	99257339
Hydro MPC-E 2 CRE32-2	7.5	1+1	15.0	4.2	30,026	99257340
Hydro MPC-E 2 CRE32-4-2	11	1+1	21.4	7.4	35,732	99208521

DN100 STAINLESS STEEL MANIFOLDS

400V 3Ph 50Hz					£	Product Code
Hydro MPC-E 2 CRE32-5-2	15	1+1	28.7	9.6	40,554	98427028

DN150 STAINLESS STEEL MANIFOLDS | IE5 PERMANENT MAGNET MOTORS

400V 3Ph 50Hz					£	Product Code
Hydro MPC-E 2 CRE45-1-1	5.5	1+1	11.0	3.1	29,389	99257341
Hydro MPC-E 2 CRE45-1	7.5	1+1	15.0	3.7	32,932	99257250
Hydro MPC-E 2 CRE45-2-2	11	1+1	21.4	5.9	38,307	99257253
Hydro MPC-E 2 CRE45-2	15	1+1	28.7	7.4	43,160	98427048
Hydro MPC-E 2 CRE45-3	18.5	1+1	34.1	10.9	POA	98427053
Hydro MPC-E 2 CRE45-4-2	22	1+1	40.0	13.0	POA	98427058
Hydro MPC-E 2 CRE64-1-1	7.5	1+1	15.0	3.2	32,582	99257257
Hydro MPC-E 2 CRE64-1	11	1+1	21.4	4.4	38,602	99257260

DN150 STAINLESS STEEL MANIFOLDS

400V 3Ph 50Hz					£	Product Code
Hydro MPC-E 2 CRE64-2-2	15	1+1	28.7	5.8	42,514	98427078
Hydro MPC-E 2 CRE64-2-1	18.5	1+1	34.1	7.3	POA	98427083
Hydro MPC-E 2 CRE64-3-2	22	1+1	40.0	9.8	POA	98427088
Hydro MPC-E 2 CR64-3-1	30	1+1	61.0	12.8	POA	98427093
Hydro MPC-E 2 CR64-3	30	1+1	61.0	11.0	POA	92527066

DN200 STAINLESS STEEL MANIFOLDS

400V 3Ph 50Hz					£	Product Code
Hydro MPC-E 2 CRE95-1-1	11	1+1	21.4	2.1	Please contact Grundfos	
Hydro MPC-E 2 CRE95-1	7.5	1+1	28.7	3.0	Please contact Grundfos	
Hydro MPC-E 2 CRE95-2-2	15	1+1	34.1	4.2	Please contact Grundfos	
Hydro MPC-E 2 CRE95-2-1	22	1+1	40.0	5.3	Please contact Grundfos	
Hydro MPC-E 2 CR95-2	30	1+1	61.0	10.0	Please contact Grundfos	
Hydro MPC-E 2 CR95-3-2	30	1+1	73.0	11.6	Please contact Grundfos	
Hydro MPC-E 2 CR95-3-1	37	1+1	73.0	13.2	Please contact Grundfos	
Hydro MPC-E 2 CR95-4-2	45	1+1	90.0	16.4	Please contact Grundfos	

Additional models are available including special build variants. Please contact your local sales for further information

- User friendly Microprocessor Interface.
- Run/trip Indication.
- Hands off/Auto operation via Microprocessor Interface.
- VFC's for run/fault indication to building management systems.
- PN16 rated pipework unless otherwise stated.
- 12 Litre Expansion vessel connected to discharge manifold. An additional free standing expansion vessel is recommended for building service applications.

Each pump incorporates an integral frequency converter drive, controlled in a cascade operation to maintain a constant pressure.

Recommended additional free standing vessel sizes as required against each pump size.

See page 6 for product codes and prices.

CRIE 3, 5, 10	Additional vessel not required.
CRIE 15, 20, 32	80 Litre
CRE 45, 64	130 Litre
CRE 95	170 Litre

ADJUSTING LEVEL SHOES FOR MPC BOOSTER SETS GUIDE-PLEASE SEE PAGE 5

MPC systems with pumps 30kW and above have fixed speed pumps with cabinet mounted CUE frequency converters



CATEGORY 3 - HYDRO MPC-E VARIABLE SPEED CRiE 3 PUMP BOOSTER SETS- WRAS APPROVED

2" STAINLESS STEEL MANIFOLDS | IE5 PERMANENT MAGNET MOTORS

230V 1Ph 50Hz Model	Electric Motor per pump kW	Base Plate	FLC (A) (per pump)	closed Valve(bar)	£	Product Code
Hydro MPC-E 3 CRIE3-2	0.37	1	2.4	1.8	15,743	98426891
Hydro MPC-E 3 CRIE3-4	0.55	1	2.4	3.6	16,170	98426894
Hydro MPC-E 3 CRIE3-5	0.75	1	4.5	4.3	16,768	98426897
Hydro MPC-E 3 CRIE3-8	1.1	1	6.6	7.0	17,679	98426900
Hydro MPC-E 3 CRIE5-2	0.55	1	3.4	1.8	16,087	98426909
Hydro MPC-E 3 CRIE5-4	1.1	1	6.6	3.7	17,057	98426912

2.5" STAINLESS STEEL MANIFOLDS | IE5 PERMANENT MAGNET MOTORS

230V 1Ph 50Hz	£	Product Code
Hydro MPC-E 3 CRIE10-1	19,147	98426924

2" STAINLESS STEEL MANIFOLDS | IE5 PERMANENT MAGNET MOTORS

400V 3Ph 50Hz	£	Product Code
Hydro MPC-E 3 CRIE3-11	20,226	98426903
Hydro MPC-E 3 CRIE5-5	19,478	98426915
Hydro MPC-E 3 CRIE5-9	21,682	98426918
Hydro MPC-E 3 CRIE5-12	23,375	99208246

DN80 STAINLESS STEEL MANIFOLDS | IE5 PERMANENT MAGNET MOTORS

400V 3Ph 50Hz	£	Product Code
Hydro MPC-E 3 CRIE10-2	22,138	98426929
Hydro MPC-E 3 CRIE10-3	24,223	98426934
Hydro MPC-E 3 CRIE10-5	25,893	99257342
Hydro MPC-E 3 CRIE10-6	28,734	99208289
Hydro MPC-E 3 CRIE10-9	32,313	99257269

DN100 STAINLESS STEEL MANIFOLDS | IE5 PERMANENT MAGNET MOTORS

400V 3Ph 50Hz	£	Product Code
Hydro MPC-E 3 CRIE15-1	22,753	98426954
Hydro MPC-E 3 CRIE15-2	26,470	99257343
Hydro MPC-E 3 CRIE15-3	29,281	99257345
Hydro MPC-E 3 CRIE15-4	32,540	99257346
Hydro MPC-E 3 CRIE15-5	38,549	99208381
Hydro MPC-E 3 CRIE20-1	24,947	98426984
Hydro MPC-E 3 CRIE20-2	29,459	99257347
Hydro MPC-E 3 CRIE20-3	32,765	99257348
Hydro MPC-E 3 CRIE20-4	38,820	99208434
Hydro MPC-E 3 CRIE20-6	47,622	99257266

Base plate

1 = Pumps and Control Panel are all mounted on one common base plate.

1 + 1 = Pumps and pipe work fittings are on one base plate and the control panel is mounted on a separate base plate.

Additional models are available including special build variants. Please contact your local sales for further information

Each pump incorporates an integral frequency converter drive, controlled in a cascade operation to maintain a constant pressure. *

- User friendly Microprocessor Interface.
- Run/trip Indication.
- Hands off/Auto operation via Microprocessor Interface.
- VFC's for run/fault indication to building management systems.
- PN16 rated pipework unless otherwise stated.
- 12 Litre Expansion vessel connected to discharge manifold. An additional free standing expansion vessel is recommended for building service applications.

Recommended additional free standing vessel sizes as required against each pump size.

See page 6 for product codes and prices.

CRiE 3, 5, 10	Additional vessel not required.
CRiE 15, 20, 32	80 Litre
CRiE 45, 64	130 Litre
CRiE 95	170 Litre

ADJUSTING LEVEL SHOES FOR MPC BOOSTER SETS GUIDE-PLEASE SEE PAGE 5



CATEGORY 3 - HYDRO MPC-E VARIABLE SPEED CRE 3 PUMP BOOSTER SETS - WRAS APPROVED

DN150 STAINLESS STEEL MANIFOLDS | IE5 PERMANENT MAGNET MOTORS

400V 3Ph 50Hz Model	Electric Motor per pump kW	Base Plate	FLC (A) (per pump)	closed Valve(bar)	£	Product Code
Hydro MPC-E 3 CRE32-1-1	2.2	1+1	4.6	1.5	28,881	98427009
Hydro MPC-E 3 CRE32-1	3	1+1	6.2	2.1	30,501	99257753
Hydro MPC-E 3 CRE32-2	7.5	1+1	15.0	4.2	42,219	99257754
Hydro MPC-E 3 CRE32-4-2	11	1+1	21.4	7.4	POA	99208522

DN150 STAINLESS STEEL MANIFOLDS

400V 3Ph 50Hz					£	Product Code
Hydro MPC-E 3 CRE32-5-2	15	1+1	28.7	9.6	POA	98427029

DN200 STAINLESS STEEL MANIFOLDS | IE5 PERMANENT MAGNET MOTORS

400V 3Ph 50Hz					£	Product Code
Hydro MPC-E 3 CRE45-1-1	5.5	1+1	11.0	3.1	41,385	99257758
Hydro MPC-E 3 CRE45-1	7.5	1+1	15.0	3.7	46,114	99257760
Hydro MPC-E 3 CRE45-2-2	11	1+1	21.4	5.9	POA	99257761
Hydro MPC-E 3 CRE45-2	15	1+1	28.7	7.4	POA	98427049
Hydro MPC-E 3 CRE45-3	18.5	1+1	34.1	10.9	POA	98427054
Hydro MPC-E 3 CRE45-4-2	22	1+1	40.0	13.0	POA	98427059
Hydro MPC-E 3 CRE64-1-1	7.5	1+1	15.0	3.2	45,589	99257774
Hydro MPC-E 3 CRE64-1	11	1+1	21.4	4.4	POA	99257794

DN200 STAINLESS STEEL MANIFOLDS

400V 3Ph 50Hz					£	Product Code
Hydro MPC-E 3 CRE64-2-2	15	1+1	28.7	5.8	POA	98427079
Hydro MPC-E 3 CRE64-2-1	18.5	1+1	34.1	7.3	POA	98427084
Hydro MPC-E 3 CRE64-3-2	22	1+1	40.0	9.8	POA	98427089
Hydro MPC-E 3 CR64-3-1	30	1+1	61.0	12.8	POA	92694303
Hydro MPC-E 3 CR64-3	30	1+1	61.0	11.0	POA	92694521

DN250 STAINLESS STEEL MANIFOLDS

400V 3Ph 50Hz					£	Product Code
Hydro MPC-E 3 CRE95-1-1	11	1+1	21.4	2.1	Please contact Grundfos	
Hydro MPC-E 3 CRE95-1	7.5	1+1	28.7	3.0	Please contact Grundfos	
Hydro MPC-E 3 CRE95-2-2	15	1+1	34.1	4.2	Please contact Grundfos	
Hydro MPC-E 3 CRE95-2-1	22	1+1	40.0	5.3	Please contact Grundfos	
Hydro MPC-E 3 CR95-2	30	1+1	61.0	10.0	Please contact Grundfos	
Hydro MPC-E 3 CR95-3-2	30	1+1	73.0	11.6	Please contact Grundfos	
Hydro MPC-E 3 CR95-3-1	37	1+1	73.0	13.2	Please contact Grundfos	
Hydro MPC-E 3 CR95-4-2	45	1+1	90.0	16.4	Please contact Grundfos	

- User friendly Microprocessor Interface.
- Run/trip Indication.
- Hands off/Auto operation via Microprocessor Interface.
- VFC's for run/fault indication to building management systems.
- PN16 rated pipework unless otherwise stated.
- 12 Litre Expansion vessel connected to discharge manifold. An additional free standing expansion vessel is recommended for building service applications.

Each pump incorporates an integral frequency converter drive, controlled in a cascade operation to maintain a constant pressure. *

Recommended additional free standing vessel sizes as required against each pump size.

See page 6 for product codes and prices.

CRIE 3, 5, 10	Additional vessel not required.
CRIE 15, 20, 32	80 Litre
CRE 45, 64	130 Litre
CRE 95	170 Litre

ADJUSTING LEVEL SHOES FOR MPC BOOSTER SETS GUIDE-PLEASE SEE PAGE 5

* MPC systems with pumps 30KW and above have fixed speed pumps with cabinet mounted CUE frequency converters



CATEGORY 3 - HYDRO MPC-E VARIABLE SPEED CRIE 4 PUMP BOOSTER SETS - WRAS APPROVED

2.5" STAINLESS STEEL MANIFOLDS | IE5 PERMANENT MAGNET MOTORS

230V 1Ph 50Hz Model	Electric Motor per pump kW	Base Plate	FLC (A) (per pump)	closed Valve(bar)	£	Product Code
Hydro MPC-E 4 CRIE3-2	0.37	1	2.4	1.8	18,201	98426892
Hydro MPC-E 4 CRIE3-4	0.55	1	2.4	3.6	18,769	98426895
Hydro MPC-E 4 CRIE3-5	0.75	1	4.5	4.3	19,574	98426898
Hydro MPC-E 4 CRIE3-8	1.1	1	6.6	7.0	21,335	98426901
Hydro MPC-E 4 CRIE5-2	0.55	1	3.4	1.8	18,657	98426910
Hydro MPC-E 4 CRIE5-4	1.1	1	6.6	3.7	20,506	98426913

DN80 STAINLESS STEEL MANIFOLDS | IE5 PERMANENT MAGNET MOTORS

230V 1Ph 50Hz	£	Product Code
Hydro MPC-E 4 CRIE10-1	22,379	98426925

2.5" STAINLESS STEEL MANIFOLDS | IE5 PERMANENT MAGNET MOTORS

400V 3Ph 50Hz	£	Product Code
Hydro MPC-E 4 CRIE3-11	24,220	98426904
Hydro MPC-E 4 CRIE5-5	23,222	98426916
Hydro MPC-E 4 CRIE5-9	26,223	98426919
Hydro MPC-E 4 CRIE5-12	28,412	99208247

DN80 STAINLESS STEEL MANIFOLDS | IE5 PERMANENT MAGNET MOTORS

400V 3Ph 50Hz	£	Product Code
Hydro MPC-E 4 CRIE10-2	26,398	98426930
Hydro MPC-E 4 CRIE10-3	29,241	98426935
Hydro MPC-E 4 CRIE10-5	31,406	99257826
Hydro MPC-E 4 CRIE10-6	35,201	99208294
Hydro MPC-E 4 CRIE10-9	39,967	99208312

DN100 STAINLESS STEEL MANIFOLDS | IE5 PERMANENT MAGNET MOTORS

400V 3Ph 50Hz					£	Product Code
Hydro MPC-E 4 CRIE15-1	1.5	1	3.3	1.4	28,231	98426955
Hydro MPC-E 4 CRIE15-2	3	1	6.2	3.0	33,181	99257844
Hydro MPC-E 4 CRIE15-3	4	1	8.1	4.6	36,943	99257845
Hydro MPC-E 4 CRIE15-4	5.5	1	11.0	6.3	41,279	99257846
Hydro MPC-E 4 CRIE15-5	7.5	1+1	15.0	7.9	POA	99208383
Hydro MPC-E 4 CRIE20-1	2.2	1	4.6	1.4	31,218	98426985
Hydro MPC-E 4 CRIE20-2	4	1	8.1	3.1	37,183	99257848
Hydro MPC-E 4 CRIE20-3	5.5	1	11.0	4.8	41,582	99257849
Hydro MPC-E 4 CRIE20-4	7.5	1+1	15.0	6.5	POA	99208436
Hydro MPC-E 4 CRIE20-6	11	1+1	21.4	10.0	POA	99257272

Additional models are available including special build variants. Please contact your local sales for further information

MPC systems with pumps 30KW and above have fixed speed pumps with cabinet mounted CUE frequency converters

- User friendly Microprocessor Interface.
- Run/trip Indication.
- Hands off/Auto operation via Microprocessor Interface.
- VFC's for run/fault indication to building management systems.
- PN16 rated pipework unless otherwise stated.
- 12 Litre Expansion vessel connected to discharge manifold.

ADJUSTING LEVEL SHOES FOR MPC BOOSTER SETS GUIDE-PLEASE SEE PAGE 5

An additional free standing expansion vessel is recommended for building service applications. See page 6 for product codes and prices.

CRIE 3, 5, 10	Additional vessel not required.
CRIE 15, 20, 32	80 Litre
CRE 45, 64	130 Litre
CRE 95	170 Litre

Each pump incorporates an integral frequency converter drive, controlled in a cascade operation to maintain a constant pressure. *



CATEGORY 3 - HYDRO MPC-E VARIABLE SPEED CRE 4 PUMP BOOSTER SETS - WRAS APPROVED
DN150 STAINLESS STEEL MANIFOLDS | IE5 PERMANENT MAGNET MOTORS

400V 3Ph 50Hz Model	Electric Motor per pump kW	Base Plate	FLC (A) (per pump)	closed Valve(bar)	£	Product Code
Hydro MPC-E 4 CRE32-1-1	2.2	1+1	4.6	1.5	36,784	98427010
Hydro MPC-E 4 CRE32-1	3	1+1	6.2	2.1	38,880	99257854
Hydro MPC-E 4 CRE32-2	7.5	1+1	15.0	4.2	POA	99257858
Hydro MPC-E 4 CRE32-4-2	11	1+1	21.4	7.4	POA	99208523

DN150 STAINLESS STEEL MANIFOLDS

400V 3Ph 50Hz					£	Product Code
Hydro MPC-E 4 CRE32-5-2	15	1+1	28.7	9.6	POA	98427030

DN200 STAINLESS STEEL MANIFOLDS | IE5 PERMANENT MAGNET MOTORS

400V 3Ph 50Hz					£	Product Code
Hydro MPC-E 4 CRE45-1-1	5.5	1+1	11.0	3.1	POA	99257859
Hydro MPC-E 4 CRE45-1	7.5	1+1	15.0	3.7	POA	99257873
Hydro MPC-E 4 CRE45-2-2	11	1+1	21.4	5.9	POA	99257875

DN200 STAINLESS STEEL MANIFOLDS

400V 3Ph 50Hz					£	Product Code
Hydro MPC-E 4 CRE45-2	15	1+1	28.7	7.4	POA	98427050
Hydro MPC-E 4 CRE45-3	18.5	1+1	34.1	10.9	POA	98427055
Hydro MPC-E 4 CRE45-4-2	22	1+1	40.0	13.0	POA	98427060

DN200 STAINLESS STEEL MANIFOLDS | IE5 PERMANENT MAGNET MOTORS

400V 3Ph 50Hz					£	Product Code
Hydro MPC-E 4 CRE64-1-1	7.5	1+1	15.0	3.2	POA	99257880
Hydro MPC-E 4 CRE64-1	11	1+1	21.4	4.4	POA	99257882

DN200 STAINLESS STEEL MANIFOLDS

400V 3Ph 50Hz					£	Product Code
Hydro MPC-E 4 CRE64-2-2	15	1+1	28.7	3.2	POA	98427080
Hydro MPC-E 4 CRE64-2-1	18.5	1+1	34.1	4.4	POA	98427085
Hydro MPC-E 4 CRE64-3-2	22	1+1	40.0	9.8	POA	98427090
Hydro MPC-E 4 CRE64-3-1	30	1+1	61.0	12.8	POA	98427095
Hydro MPC-E 4 CRE64-3	30	1+1	61.0	11.0	POA	92527084

DN250 STAINLESS STEEL MANIFOLDS | IE5 PERMANENT MAGNET MOTORS

400V 3Ph 50Hz					£	Product Code
Hydro MPC-E 4 CRE95-1-1	11	1+1	21.4	2.1		Please contact Grundfos
Hydro MPC-E 4 CRE95-1	7.5	1+1	28.7	3.0		Please contact Grundfos

DN250 STAINLESS STEEL MANIFOLDS

400V 3Ph 50Hz					£	Product Code
Hydro MPC-E 4 CRE95-2-2	15	1+1	34.1	4.2		Please contact Grundfos
Hydro MPC-E 4 CRE95-2-1	22	1+1	40.0	5.3		Please contact Grundfos
Hydro MPC-E 4 CRE95-2	30	1+1	61.0	10.0		Please contact Grundfos
Hydro MPC-E 4 CRE95-3-2	30	1+1	73.0	11.6		Please contact Grundfos
Hydro MPC-E 4 CRE95-3-1	37	1+1	73.0	13.2		Please contact Grundfos
Hydro MPC-E 4 CRE95-4-2	45	1+1	90.0	16.4		Please contact Grundfos

Additional models are available including special build variants. Please contact your local sales for further information

***MPC systems with pumps 30KW and above have fixed speed pumps with cabinet mounted CUE frequency converters**

- User friendly Microprocessor Interface.
- Run/trip Indication.
- Hands off/Auto operation via Microprocessor Interface.
- VFC's for run/fault indication to building management systems.
- PN16 rated pipework unless otherwise stated.
- 12 Litre Expansion vessel connected to discharge manifold.

ADJUSTING LEVEL SHOES FOR MPC BOOSTER SETS GUIDE-PLEASE SEE PAGE 5

An additional free standing expansion vessel is recommended for building service applications. See page 6 for product codes and prices.

CRiE 3,5,10	Additional vessel not required.
CRiE 15, 20, 32	80 Litre
CRE 45, 64	130 Litre
CRE 95	170 Litre

Each pump incorporates an integral frequency converter drive, controlled in a cascade operation to maintain a constant pressure. *



CATEGORY 3 - HYDRO MPC-E VARIABLE SPEED CRE/IE 5 PUMP BOOSTER SETS -WRAS APPROVED
DN100 STAINLESS STEEL MANIFOLDS | IE5 PERMANENT MAGNET MOTORS

230V 1Ph 50Hz Model	Electric Motor per pump kW	Base Plate	FLC (A) (per pump)	closed Valve(bar)	£	Product Code
Hydro MPC-E 5 CRIE10-1	0.55	1+1	3.4	1.0	30,805	98426926

DN100 STAINLESS STEEL MANIFOLDS | IE5 PERMANENT MAGNET MOTORS

400V 3Ph 50Hz					£	Product Code
Hydro MPC-E 5 CRIE10-2	1.5	1+1	3.3	2.2	33,760	98426931
Hydro MPC-E 5 CRIE10-3	2.2	1+1	4.6	3.4	37,170	98426936
Hydro MPC-E 5 CRIE10-5	3	1+1	6.2	5.7	40,113	99257905
Hydro MPC-E 5 CRIE10-6	4	1+1	8.1	6.9	44,818	99208298
Hydro MPC-E 5 CRIE10-9	5.5	1+1	11.0	10.4	POA	99208335

DN150 STAINLESS STEEL MANIFOLDS | IE5 PERMANENT MAGNET MOTORS

400V 3Ph 50Hz					£	Product Code
Hydro MPC-E 5 CRIE15-1	1.5	1+1	3.3	1.4	36,874	98426956
Hydro MPC-E 5 CRIE15-2	3	1+1	6.2	3.0	43,155	99257908
Hydro MPC-E 5 CRIE15-3	4	1+1	8.1	4.6	47,814	99257909
Hydro MPC-E 5 CRIE15-4	5.5	1+1	11.0	6.3	POA	99257911
Hydro MPC-E 5 CRIE15-5	7.5	1+1	15.0	7.9	POA	99208384
Hydro MPC-E 5 CRIE20-1	2.2	1+1	4.6	1.4	40,457	98426986
Hydro MPC-E 5 CRIE20-2	4	1+1	8.1	3.1	48,114	99257923
Hydro MPC-E 5 CRIE20-3	5.5	1+1	11.0	4.8	POA	99257926
Hydro MPC-E 5 CRIE20-4	7.5	1+1	15.0	6.5	POA	99208438
Hydro MPC-E 5 CRIE20-6	11	1+1	21.4	10.0	POA	99257305
Hydro MPC-E 5 CRE32-1-1	2.2	1+1	4.6	1.5	47,997	98427011
Hydro MPC-E 5 CRE32-1	3	1+1	6.2	2.1	POA	99257929
Hydro MPC-E 5 CRE32-2	7.5	1+1	15.0	4.2	POA	99257930
Hydro MPC-E 5 CRE32-4-2	11	1+1	21.4	7.4	POA	99208524

DN150 STAINLESS STEEL MANIFOLDS

400V 3Ph 50Hz					£	Product Code
Hydro MPC-E 5 CRE32-5-2	15	1+1	28.7	9.6	POA	98427031

DN200 STAINLESS STEEL MANIFOLDS | IE5 PERMANENT MAGNET MOTORS

400V 3Ph 50Hz					£	Product Code
Hydro MPC-E 5 CRE45-2-2	11	1+1	21.4	4.4	POA	99257932

DN200 STAINLESS STEEL MANIFOLDS

400V 3Ph 50Hz					£	Product Code
Hydro MPC-E 5 CRE45-2	15	1+1	28.7	5.6	POA	98427051
Hydro MPC-E 5 CRE45-3	18.5	1+1	34.1	8.5	POA	98427056
Hydro MPC-E 5 CRE45-4-2	22	1+1	40.0	10.0	POA	98427061

DN200 STAINLESS STEEL MANIFOLDS | IE5 PERMANENT MAGNET MOTORS

400V 3Ph 50Hz					£	Product Code
Hydro MPC-E 5 CRE64-1-1	7.5	1+1	15.0	3.2	POA	99257935
Hydro MPC-E 5 CRE64-1	11	1+1	21.4	4.4	POA	99257938

DN200 STAINLESS STEEL MANIFOLDS

400V 3Ph 50Hz					£	Product Code
Hydro MPC-E 5 CRE64-2-2	15	1+1	28.7	3.2	POA	98427081
Hydro MPC-E 5 CRE64-2-1	18.5	1+1	34.1	4.4	POA	98427086
Hydro MPC-E 5 CRE64-3-2	22	1+1	40.0	7.8	POA	98427091
Hydro MPC-E 5 CR64-3-1	30	1+1	61.0	12.8	POA	92527095
Hydro MPC-E 5 CR64-3	30	1+1	61.0	11.0	POA	92527096

DN300 STAINLESS STEEL MANIFOLDS | IE5 PERMANENT MAGNET MOTORS

400V 3Ph 50Hz					£	Product Code
Hydro MPC-E 5 CRE95-1-1	11	1+1	21.4	2.1		Please contact Grundfos

DN300 STAINLESS STEEL MANIFOLDS

400V 3Ph 50Hz					£	Product Code
Hydro MPC-E 5 CRE95-1	7.5	1+1	28.7	3.0		Please contact Grundfos
Hydro MPC-E 5 CRE95-2-2	15	1+1	34.1	4.2		Please contact Grundfos
Hydro MPC-E 5 CRE95-2-1	22	1+1	40.0	5.3		Please contact Grundfos
Hydro MPC-E 5 CR95-2	30	1+1	61.0	10.0		Please contact Grundfos
Hydro MPC-E 5 CR95-3-2	30	1+1	73.0	11.6		Please contact Grundfos
Hydro MPC-E 5 CR95-3-1	37	1+1	73.0	13.2		Please contact Grundfos
Hydro MPC-E 5 CR95-4-2	45	1+1	90.0	16.4		Please contact Grundfos

Please see page 21 for additional information



CATEGORY 3 - HYDRO MPC-E VARIABLE SPEED CRE/IE 6 PUMP BOOSTER SETS -WRAS APPROVED

DN100 STAINLESS STEEL MANIFOLDS | IE5 PERMANENT MAGNET MOTORS

230V 1Ph 50Hz Model	Electric Motor per pump kW	Base Plate	FLC (A) (per pump)	closed Valve(bar)	£	Product Code
Hydro MPC-E 6 CRIE10-1	0.55	1+1	3.4	1.0		Please contact Grundfos

DN100 STAINLESS STEEL MANIFOLDS | IE5 PERMANENT MAGNET MOTORS

400V 3Ph 50Hz					£	Product Code
Hydro MPC-E 6 CRIE10-2	1.5	1+1	3.3	2.2	42,132	98426932
Hydro MPC-E 6 CRIE10-3	2.2	1+1	4.6	3.4	46,252	98426937
Hydro MPC-E 6 CRIE10-5	3	1+1	6.2	5.7	47,064	99257940
Hydro MPC-E 6 CRIE10-6	4	1+1	8.1	6.9	POA	99208300
Hydro MPC-E 6 CRIE10-9	5.5	1+1	11.0	10.4	POA	99208338

DN150 STAINLESS STEEL MANIFOLDS | IE5 PERMANENT MAGNET MOTORS

400V 3Ph 50Hz					£	Product Code
Hydro MPC-E 6 CRIE15-3	4	1+1	8.1	4.6	POA	99257942
Hydro MPC-E 6 CRIE15-4	5.5	1+1	11.0	6.3	POA	99257954
Hydro MPC-E 6 CRIE15-5	7.5	1+1	15.0	7.9	POA	99208416
Hydro MPC-E 6 CRIE20-1	2.2	1+1	4.6	1.4	48,727	98426987
Hydro MPC-E 6 CRIE20-2	4	1+1	8.1	3.1	POA	99257958
Hydro MPC-E 6 CRIE20-3	5.5	1+1	11.0	4.8	POA	99257959
Hydro MPC-E 6 CRIE20-4	7.5	1+1	15.0	6.5	POA	99208441
Hydro MPC-E 6 CRIE20-6	11	1+1	21.4	10.0	POA	99257307
Hydro MPC-E 6 CRE32-1-1	2.2	1+1	4.6	1.5	POA	98427012
Hydro MPC-E 6 CRE32-1	3	1+1	6.2	2.1	POA	99258004
Hydro MPC-E 6 CRE32-2	7.5	1+1	15.0	4.2	POA	99258009
Hydro MPC-E 6 CRE32-4-2	11	1+1	21.4	7.4	POA	99208525

DN150 STAINLESS STEEL MANIFOLDS

400V 3Ph 50Hz					£	Product Code
Hydro MPC-E 6 CRE32-5-2	15	1+1	28.7	9.6	POA	98427032

DN200 STAINLESS STEEL MANIFOLDS | IE5 PERMANENT MAGNET MOTORS

400V 3Ph 50Hz					£	Product Code
Hydro MPC-E 6 CRE45-2-2	11	1+1	21.4	4.4	POA	99258011

DN200 STAINLESS STEEL MANIFOLDS

400V 3Ph 50Hz					£	Product Code
Hydro MPC-E 6 CRE45-2	15	1+1	28.7	5.6	POA	98427052
Hydro MPC-E 6 CRE45-3	18.5	1+1	34.1	8.5	POA	98427057
Hydro MPC-E 6 CRE45-4-2	22	1+1	40.0	10.0	POA	98427062

DN200 STAINLESS STEEL MANIFOLDS | IE5 PERMANENT MAGNET MOTORS

400V 3Ph 50Hz					£	Product Code
Hydro MPC-E 6 CRE64-1-1	7.5	1+1	15.0	3.2	POA	99258024
Hydro MPC-E 6 CRE64-1	11	1+1	21.4	4.4	POA	99258025

DN200 STAINLESS STEEL MANIFOLDS

400V 3Ph 50Hz					£	Product Code
Hydro MPC-E 6 CRE64-2-2	15	1+1	28.7	3.2	POA	98427082
Hydro MPC-E 6 CRE64-2-1	18.5	1+1	34.1	4.4	POA	98427087
Hydro MPC-E 6 CRE64-3-2	22	1+1	40.0	7.8	POA	98427092
Hydro MPC-E 6 CRE64-3-1	30	1+1	61.0	12.8	POA	92527099
Hydro MPC-E 6 CRE64-3	30	1+1	61.0	11.0	POA	92527111

DN350 STAINLESS STEEL MANIFOLDS | IE5 PERMANENT MAGNET MOTORS

400V 3Ph 50Hz					£	Product Code
Hydro MPC-E 6 CRE95-1-1	11	1+1	21.4	2.1		Please contact Grundfos

DN350 STAINLESS STEEL MANIFOLDS

400V 3Ph 50Hz					£	Product Code
Hydro MPC-E 6 CRE95-1	7.5	1+1	28.7	3.0		Please contact Grundfos
Hydro MPC-E 6 CRE95-2-2	15	1+1	34.1	4.2		Please contact Grundfos
Hydro MPC-E 6 CRE95-2-1	22	1+1	40.0	5.3		Please contact Grundfos
Hydro MPC-E 6 CR95-2	30	1+1	61.0	10.0		Please contact Grundfos
Hydro MPC-E 6 CR95-3-2	30	1+1	73.0	11.6		Please contact Grundfos
Hydro MPC-E 6 CR95-3-1	37	1+1	73.0	13.2		Please contact Grundfos
Hydro MPC-E 6 CR95-4-2	45	1+1	90.0	16.4		Please contact Grundfos

Additional models are available including special build variants. Please contact your local sales for further information

* MPC systems with pumps 30KW and above have fixed speed pumps with cabinet mounted CUE frequency converters

- User friendly Microprocessor Interface.
- Run/trip Indication.
- Hands off/Auto operation via Microprocessor Interface.
- VFC's for run/fault indication to building management systems.
- PN16 rated pipework unless otherwise stated.
- 12 Litre Expansion vessel connected to discharge manifold.

ADJUSTING LEVEL SHOES FOR MPC BOOSTER SETS GUIDE-PLEASE SEE PAGE 5

An additional free standing expansion vessel is recommended for building service applications. See page 6 for product codes and prices.

CRIE 3,5,10	Additional vessel not required.
CRIE 15, 20, 32	80 Litre
CRE 45, 64	130 Litre
CRE 95	170 Litre

Each pump incorporates an integral frequency converter drive, controlled in a cascade operation to maintain a constant pressure.



CATEGORY 3 - WATER TRANSFER SETS WITH 50 GALLON BREAK TANKS**BYEPAC CM3**

230V 1Ph 50Hz	Tank Size			
Model	(Gallons)	(Litres)	£	Product Code
Byepac CM3-3	50	227	4,600	97762774
Byepac CM3-4	50	227	4,640	97762775
Byepac CM3-5	50	227	4,622	97762776
Byepac CM3-6	50	227	4,764	97762777

BYEPAC CM5

230V 1Ph 50Hz			£	Product Code
Byepac CM5-3	50	227	4,602	97762782
Byepac CM5-4	50	227	4,726	97762783
Byepac CM5-5	50	227	4,879	97762784
Byepac CM5-6	50	227	5,431	97762785

BYEPAC CM3

400V 3Ph 50Hz			£	Product Code
Byepac CM3-3	50	227	6,563	97806427
Byepac CM3-4	50	227	6,767	97806428
Byepac CM3-5	50	227	6,813	97806429
Byepac CM3-6	50	227	6,718	97806430

BYEPAC CM5

400V 3Ph 50Hz			£	Product Code
Byepac CM5-3	50	227	6,634	97806446
Byepac CM5-4	50	227	6,741	97806447
Byepac CM5-5	50	227	6,813	97806448
Byepac CM5-6	50	227	7,046	97806449

BYEPAC CMBE 1/3/5

400V 3Ph 50Hz			£	Product Code
Byepac CMBE1-44	50	227	4,790	98050369
Byepac CMBE3-62	50	227	4,656	98050371
Byepac CMBE3-93	50	227	4,837	92563187
Byepac CMBE5-62	50	227	5,194	92511415

CATEGORY 3 - WATER TRANSFER SETS WITH 100 GALLON BREAK TANKS**BYEPAC CM3**

230V 1Ph 50Hz	Tank Size			
Model	(Gallons)	(Litres)	£	Product Code
Byepac CM3-3	100	454	6,175	97762778
Byepac CM3-4	100	454	6,215	97762779
Byepac CM3-5	100	454	6,189	97762780
Byepac CM3-6	100	454	6,117	97762781

BYEPAC CM5

230V 1Ph 50Hz			£	Product Code
Byepac CM5-3	100	454	6,248	97762786
Byepac CM5-4	100	454	6,373	97762787
Byepac CM5-5	100	454	6,456	97762788
Byepac CM5-6	100	454	7,003	97762789

BYEPAC CM3

400V 3Ph 50Hz			£	Product Code
Byepac CM3-3	100	454	POA	97806441
Byepac CM3-4	100	454	POA	97806443
Byepac CM3-5	100	454	8,184	97806444
Byepac CM3-6	100	454	8,263	97806445

BYEPAC CM5

400V 3Ph 50Hz			£	Product Code
Byepac CM5-3	100	454	8,172	97806450
Byepac CM5-4	100	454	8,279	97806451
Byepac CM5-5	100	454	6,280	92628568
Byepac CM5-6	100	454	8,623	97806453

BYEPAC CMBE 1/3/5

400V 3Ph 50Hz			£	Product Code
Byepac CMBE1-44	100	454	6,641	98050373
Byepac CMBE3-62	100	454	6,171	98050376
Byepac CMBE3-93	100	454	6,280	92628568
Byepac CMBE5-62	100	454	6,243	99092963

CATEGORY 3 - HYDRO GTI -S SINGLE PUMP FIXED SPEED BOOSTER SETS

Model 240v 1ph 50Hz	Electric Motor per pump kW	Closed Valve (bar)	£	Product Code
HYDRO GTI-S 1 x CM 3-4	0.50	3.7	7,013	98491903
HYDRO GTI-S 1 x CM 3-5	0.50	4.6	7,106	98491905
HYDRO GTI-S 1 x CM 3-6	0.67	5.6	7,261	98491906
HYDRO GTI-S 1 x CM 5-2	0.50	1.9	6,337	98491908
HYDRO GTI-S 1 x CM 5-3	0.50	2.8	6,493	98491909
HYDRO GTI-S 1 x CM 5-4	0.67	3.7	7,261	98491923
HYDRO GTI-S 1 x CM 5-5	0.90	4.7	6,866	98491924
HYDRO GTI-S 1 x CM 5-6	1.30	5.6	7,947	98491926

Packaged booster set complete with 60 Litre CAT5 Break Tank and an electrical panel complete with pump mcb's.

CATEGORY 3 - HYDRO GTI -S TWIN PUMP FIXED SPEED BOOSTER SETS

Model 240v 1ph 50Hz	Electric Motor per pump kW	Closed Valve (bar)	£	Product Code
HYDRO GTI-S 2 x CM 3-4	0.50	3.7	10,160	98491927
HYDRO GTI-S 2 x CM 3-5	0.50	4.6	11,834	98491931
HYDRO GTI-S 2 x CM 3-6	0.67	5.6	9,864	98491932
HYDRO GTI-S 2 x CM 5-3	0.50	2.8	9,822	98491936
HYDRO GTI-S 2 x CM 5-4	0.67	3.7	10,653	98491937
HYDRO GTI-S 2 x CM 5-5	0.90	4.7	10,963	98491939
HYDRO GTI-S 2 x CM 5-6	1.30	5.6	11,137	98491940

Packaged booster set complete with 60 Litre CAT5 Break Tank and an electrical panel complete with pump mcb's.

NB: 1 bar minimum suction pressure required.

Pump isolation valves included.
(Not shown in photograph)



CATEGORY 3 - HYDRO GTI -E SINGLE PUMP VARIABLE SPEED BOOSTER SETS IE5 PERMANENT MAGNET MOTORS

Model 240v 1ph 50Hz	Electric Motor per pump kW	Closed Valve (bar)	£	Product Code
HYDRO GTI-E 1 x CME 3-2	0.55	2.6	10,002	98649885
HYDRO GTI-E 1 x CME 3-3	1.10	4.0	10,138	98649808
HYDRO GTI-E 1 x CME 3-4	1.10	5.3	11,189	98649806
HYDRO GTI-E 1 x CME 3-5	1.10	6.6	9,762	98649805
HYDRO GTI-E 1 x CME 5-2	1.10	2.7	9,502	98649804
HYDRO GTI-E 1 x CME 5-3	1.10	4.0	9,631	98649803

Model 415v 3ph 50Hz	Electric Motor per pump kW	Closed Valve (bar)	£	Product Code
HYDRO GTI-E 1 x CME 3-6	1.50	8.0	9,839	98649801
HYDRO GTI-E 1 x CME 3-7	1.50	9.2	10,835	98649790
HYDRO GTI-E 1 x CME 3-8	2.20	10.5	11,535	98696453
HYDRO GTI-E 1 x CME 3-9	2.20	12.0	11,908	98649785
HYDRO GTI-E 1 x CME 5-4	1.50	5.4	10,954	98649784
HYDRO GTI-E 1 x CME 5-5	2.20	6.7	11,354	98649782
HYDRO GTI-E 1 x CME 5-6	2.20	8.1	11,908	98649781
HYDRO GTI-E 1 x CME 5-7	3.00	9.4	12,083	98649780
HYDRO GTI-E 1 x CME 5-8	3.00	10.7	13,564	98649778

Packaged booster set complete with 60 Litre CAT5 Break Tank and an electrical panel complete with pump mcb's.

CATEGORY 3 - HYDRO GTI -E TWIN PUMP VARIABLE SPEED BOOSTER SETS IE5 PERMANENT MAGNET MOTORS

Model 240v 1ph 50Hz	Electric Motor per pump kW	Closed Valve (bar)	£	Product Code
HYDRO GTI-E 2 x CME 3-2	0.55	2.6	14,451	98785590
HYDRO GTI-E 2 x CME 3-3	1.10	4.0	14,903	98780755
HYDRO GTI-E 2 x CME 3-4	1.10	5.3	15,103	98785597
HYDRO GTI-E 2 x CME 3-5	1.10	6.6	15,449	98785598
HYDRO GTI-E 2 x CME 5-2	1.10	2.7	16,406	98785621
HYDRO GTI-E 2 x CME 5-3	1.10	4.0	16,823	98785622

Model 415v 3ph 50Hz	Electric Motor per pump kW	Closed Valve (bar)	£	Product Code
HYDRO GTI-E 2 x CME 3-6	1.50	8.0	18,827	98785611
HYDRO GTI-E 2 x CME 3-7	1.50	9.2	18,990	98785613
HYDRO GTI-E 2 x CME 3-8	2.20	10.5	14,826	98785618
HYDRO GTI-E 2 x CME 3-9	2.20	12.0	13,978	98785619
HYDRO GTI-E 2 x CME 5-4	1.50	5.4	17,199	98649905
HYDRO GTI-E 2 x CME 5-5	2.20	6.7	18,813	98785623
HYDRO GTI-E 2 x CME 5-6	2.20	8.1	19,082	98649890
HYDRO GTI-E 2 x CME 5-7	3.00	9.4	20,258	98785624
HYDRO GTI-E 2 x CME 5-8	3.00	10.7	21,150	98649888

Packaged booster set complete with 60 Litre CAT5 Break Tank and an electrical panel complete with pump mcb's.

Each pump incorporates an integral frequency converter drive, controlled in a duty /standby operation to maintain a constant pressure.

NB: 1 bar minimum suction pressure required.



CATEGORY 3 - Grundfos PRESSURISATION UNITS (240V 1PH ONLY)**MINI TOP UP PRESSURISATION UNITS (WALL MOUNTING)**

Model	Description	£	Product Code
PHT A N130	Single pump pressurisation unit 3.0 bar - PN10	1,841	99264904
PHT A N230	Twin pump pressurisation unit 3.0 bar - PN10	1,955	99264947

MIDI TOP UP PRESSURISATION UNITS (WALL MOUNTING)

Model	Description	£	Product Code
PHT A D125	Single pump pressurisation unit 2.5 bar - PN10	2,319	99264948
PHT A D150	Single pump pressurisation unit 5.0 bar - PN10	2,384	99264949
PHT A D225	Twin pump pressurisation unit 2.5 bar - PN10	2,663	99264951
PHT A D250	Twin pump pressurisation unit 5.0 bar - PN10	2,765	99264952

STANDARD TOP UP PRESSURISATION UNITS (FLOOR STANDING)

Model	Description	£	Product Code
PHT A F125	Single pump pressurisation unit 2.5 bar - PN10	2,087	99264963
PHT A F150	Single pump pressurisation unit 5.0 bar - PN10	2,259	99264964
PHT A F180	Single pump pressurisation unit 8.0 bar - PN10	3,875	99264965
PHT A F225	Twin pump pressurisation unit 2.5 bar - PN10	2,473	99264966
PHT A F250	Twin pump pressurisation unit 5.0 bar - PN10	2,776	99264967
PHT A F280	Twin pump pressurisation unit 8.0 bar - PN10	6,006	99264968

STANDARD TWIN SYSTEM TOP UP PRESSURISATION UNITS (FLOOR STANDING)

Model	Description	£	Product Code
PHT A T225	Twin pump pressurisation unit 2.5 bar - PN10	4,196	99264969
PHT A T250	Twin pump pressurisation unit 5.0 bar - PN10	4,649	99264970

ACCESSORY - PHT A FIELDBUS COMMUNICATION CARD KIT (EACH KIT CONTAINS A CIM CARD)

Model	Description	£	Product Code
MODBUS	Communication card Kit. Including CIM200	413	99366919
BACNET	Communication card Kit. Including CIM300	413	99366907

STANDARD TOP UP PRESSURISATION AND GLYCOL UNITS (FLOOR STANDING)

Model	Description	£	Product Code
PHT A V225	Twin pump pressurisation and Glycol unit 2.5 bar - PN10	6,375	99264977
PHT A V250	Twin pump pressurisation and Glycol unit 5.0 bar - PN10	7,244	99264979

MINI MONOPRESS PRESSURISATION UNITS (WALL MOUNTING)

Model	Description	£	Product Code
MINI MONOPRESS	Basic Set, designed for wall mounting	1,064	MMP50801
MINI MONOPRESS	Basic Set (wall mounting) with high/low pressure switches for others to wire and no lamps.	1,342	MMP50802
MINI DUOPRESS	Basic Set (wall mounting) with high/low pressure switches for others to wire and no lamps.	1,516	MDP50802



CATEGORY 3 - SPIROTECH PRESSURISATION UNITS C/W Integral Break Tank**SPILLBACK SYSTEM WITH AN INTEGRAL TOP UP UNIT (FLOOR STANDING) WITH DEGASSER 240v 1PH**

Model	Description	£	Product Code
PHP A-1-D - 4.0 bar	Spillback system with top up unit 4.0 bar - PN6	17,697	99535093
PHP A-1-D - 5.6 bar	Spillback system with top up unit 5.6 bar - PN6	16,386	99535095
PHP A-1-D - 6.6 bar	Spillback system with top up unit 6.6 bar - PN10	21,098	92606019
PHP A-1-D - 8.1 bar	Spillback system with top up unit 8.1 bar - PN10	21,917	92606020

SPILLBACK SYSTEM WITH AN INTEGRAL TOP UP UNIT (FLOOR STANDING)WITH DEGASSER and Binary Board 240v 1PH

Model	Description	£	Product Code
PHP A-1-D-BB - 4.0 bar	Spillback system with top up unit Degasser and Binary Board 4.0 bar - PN6	18,812	99535104
PHP A-1-D-BB - 5.6 bar	Spillback system with top up unit Degasser and Binary Board 5.6 bar - PN6	18,812	99535105
PHP A-1-D-BB - 6.6 bar	Spillback system with top up unit Degasser and Binary Board 6.6 bar - PN10	22,401	92606043
PHP A-1-D-BB - 8.1 bar	Spillback system with top up unit Degasser and Binary Board 8.1 bar - PN10	23,228	92606044

Model Description**SPILLBACK SYSTEM WITH AN INTEGRAL TOP UP UNIT (FLOOR STANDING) 415v 3PH**

Model	Description	£	Product Code
PHP A-2 - 6.6 bar	Spillback system with top up unit 6.6 bar - PN10	25,991	92606021
PHP A-3 - 10.4 bar	Spillback system with top up unit 10.4 bar - PN16	27,231	92606022
PHP A-4 - 6.2 bar	Spillback system with top up unit 6.2 bar - PN10	24,047	99535096
PHP A-6 - 10.1 bar	Spillback system with top up unit 10.1 bar - PN16	27,344	99535097
PHP A-8 - 16.0 bar	Spillback system with top up unit 16.0 bar - PN25	34,012	99535098
PHP A-9 - 11.0 bar	Spillback system with top up unit 11.0 bar - PN16	32,179	99535099

SPILLBACK SYSTEM WITH AN INTEGRAL TOP UP UNIT (FLOOR STANDING)WITH DEGASSER 415v 3PH

Model	Description	£	Product Code
PHP A-2-D - 6.6 bar	Spillback system with top up unit and Degasser 6.6 bar - PN10	27,286	92606023
PHP A-3-D - 10.4 bar	Spillback system with top up unit and Degasser 10.4 bar - PN16	28,527	92606042
PHP A-4-D - 6.2 bar	Spillback system with top up unit and Degasser 6.2 bar - PN10	25,310	99535100
PHP A-6-D - 10.1 bar	Spillback system with top up unit and Degasser 10.1 bar - PN16	28,607	99535101
PHP A-8-D - 16.0 bar	Spillback system with top up unit and Degasser 16.0 bar - PN25	34,939	99535102
PHP A-9-D - 11.0 bar	Spillback system with top up unit and Degasser 11.0 bar - PN16	33,199	99535103

SPILLBACK SYSTEM WITH AN INTEGRAL TOP UP UNIT (FLOOR STANDING) and Binary Board 415v 3PH

Model	Description	£	Product Code
PHP A-2-BB - 6.6 bar	Spillback system with top up unit and Binary Board 6.6 bar - PN10	27,051	92606045
PHP A-3-BB - 10.4 bar	Spillback system with top up unit and Binary Board 10.4 bar - PN16	28,291	92606048
PHP A-4-BB - 6.2 bar	Spillback system with top up unit and Binary Board 6.2 bar - PN10	27,088	99535107
PHP A-6-BB - 10.1 bar	Spillback system with top up unit and Binary Board 10.1 bar - PN16	28,378	99535108
PHP A-8-BB - 16.0 bar	Spillback system with top up unit and Binary Board 16.0 bar - PN25	37,848	99535109
PHP A-9-BB - 11.0 bar	Spillback system with top up unit and Binary Board 11.0 bar - PN16	33,213	99535111

SPILLBACK SYSTEM WITH AN INTEGRAL TOP UP UNIT (FLOOR STANDING)WITH DEGASSER and Binary Board 415v 3PH

Model	Description	£	Product Code
PHP A-2-D-BB - 6.6 bar	Spillback system with top up unit Degasser and Binary Board 6.6 bar - PN10	28,343	92606049
PHP A-3-D-BB - 10.4 bar	Spillback system with top up unit Degasser and Binary Board 10.4 bar - PN16	29,586	92606070
PHP A-4-D-BB - 6.2 bar	Spillback system with top up unit Degasser and Binary Board 6.2 bar - PN10	28,452	99535124
PHP A-6-D-BB - 10.1 bar	Spillback system with top up unit Degasser and Binary Board 10.1 bar - PN16	32,011	99535125
PHP A-8-D-BB - 16.0 bar	Spillback system with top up unit Degasser and Binary Board 16.0 bar - PN25	38,849	99535126
PHP A-9-D-BB - 11.0 bar	Spillback system with top up unit Degasser and Binary Board 11.0 bar - PN16	34,231	99535127



CATEGORY 3 - SPIROTECH DEGASSER UNITS

DEGASSER UNITS

Model	Description	Voltage	Phase	£	Product Code
PHD A-120- 0.25- 2.5 bar	Degassing system with top up unit 0.5 -2.5 bar - PN6	240V	1PH	4,164	92604213
PHD A-140- 1.0- 4.0 bar	Degassing system with top up unit 1.0 -4.0 bar - PN6	240V	1PH	5,274	99576611
PHD A-160- 2.5- 6.0 bar	Degassing system with top up unit 2.5- 6.0 bar - PN6	240V	1PH	8,194	99475393
PHD A-1100- 5.0- 10.0 bar	Degassing system with top up unit 5.0- 10.0 bar- PN10	415V	3PH	10,588	99475394
PHD A-1160- 9.0- 16.0 bar	Degassing system with top up unit 9.0- 16.0 bar - PN16	415V	3PH	12,005	99475395

DEGASSER UNITS - WITH INTEGRAL BREAK TANK

Model	Description	£	Product Code
PHD A-140- 1.0- 4.0 bar	Degassing system with top up unit 1.0 -4.0 bar - PN6	5,841	99576612
PHD A-160- 2.5- 6.0 bar	Degassing system with top up unit 2.5- 6.0 bar - PN6	9,094	99576613

DEGASSER UNITS - WITH REFILL

Model	Description	£	Product Code
PHD A-140- 5.0- 10.0 bar	Degassing system with top up unit 5.0- 10.0 bar- PN10	12,005	99576614
PHD A-140- 9.0- 16.0 bar	Degassing system with top up unit 9.0- 16.0 bar - PN16	11,561	99576615



CATEGORY 3 - SPIROTECH PRIMARY AND AUXILIARY MAIN VESSELS - PRESSURELESS

SPILLBACK SYSTEM MAIN VESSELS

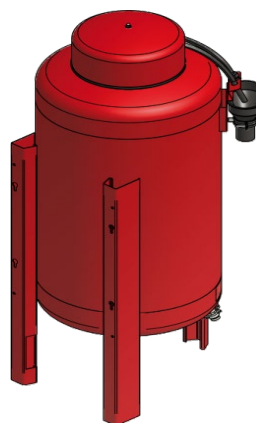
Model	£	Product Code
PHP A Main Vessel 200 L	2,651	99475406
PHP A Main Vessel 300 L	2,940	99475408
PHP A Main Vessel 500 L	3,663	99475409
PHP A Main Vessel 800 L	4,851	99475410
PHP A Main Vessel 1000 L	5,382	99475411
PHP A Main Vessel 1500 L	9,568	99475412
PHP A Main Vessel 2000 L	11,739	99475413
PHP A Main Vessel 2500 L	14,925	99475414
PHP A Main Vessel 3000 L	18,108	99475415
PHP A Main Vessel 4000 L	20,241	99475417
PHP A Main Vessel 5000 L	21,377	99475419
PHP A Main Vessel 10000 L	35,871	99475420

SPILLBACK SYSTEM AUXILIARY VESSELS

Model	£	Product Code
PHP A Aux. Vessel 200 L	2,272	99475421
PHP A Aux. Vessel 300 L	2,167	99475422
PHP A Aux. Vessel 500 L	3,057	99475433
PHP A Aux. Vessel 800 L	4,375	99475434
PHP A Aux. Vessel 1000 L	4,992	99475435
PHP A Aux. Vessel 1500 L	9,286	99475437
PHP A Aux. Vessel 2000 L	11,377	99475438
PHP A Aux. Vessel 2500 L	13,496	99475439
PHP A Aux. Vessel 3000 L	17,775	99478293
PHP A Aux. Vessel 4000 L	18,335	99478294
PHP A Aux. Vessel 5000 L	19,504	99478295
PHP A Aux. Vessel 10000 L	34,925	99478297

PRESSURISATION INTERMEDIATE VESSEL PN10

Model	£	Product Code
PHP A Intermediate Vessel 100 L	2,117	99478298
PHP A Intermediate Vessel 200 L	2,423	99478299
PHP A Intermediate Vessel 350 L	3,213	99478300
PHP A Intermediate Vessel 500 L	3,574	99478302
PHP A Intermediate Vessel 750 L	5,998	99478303
PHP A Intermediate Vessel 1000 L	7,709	99478304



CATEGORY 3 - SPIROTECH PRESSURISATION - AIR SEPARATION

Description	£	Product Code
INLINE AIR SEPARATORS - FLANGE CONNECTIONS - Max temp 110 Deg C		
In line air separator Flanged DN 50 Max. working pressure 10 bar PN16	1,382	99499278
In line air separator Flanged DN 65 Max. working pressure 10 bar PN16	1,425	99499335
In line air separator Flanged DN 80 Max. working pressure 10 bar PN16	1,930	99499336
In line air separator Flanged DN 100 Max. working pressure 10 bar PN16	2,166	99499337
In line air separator Flanged DN 125 Max. working pressure 10 bar PN16	3,975	99499338
In line air separator Flanged DN 150 Max. working pressure 10 bar PN16	4,481	99499339
In line air separator Flanged DN 200 Max. working pressure 10 bar PN16	5,474	99499340
In line air separator Flanged DN 250 Max. working pressure 10 bar PN16	8,589	99499342
In line air separator Flanged DN 300 Max. working pressure 10 bar PN16	14,660	99499353

INLINE DIRT SEPARATORS - FLANGE CONNECTIONS- Max temp 110 Deg C

Description	£	Product Code
In line dirt separator Flanged DN 50 Max. working pressure 10 bar PN16	1,347	99499354
In line dirt separator Flanged DN 65 Max. working pressure 10 bar PN16	1,395	99499355
In line dirt separator Flanged DN 80 Max. working pressure 10 bar PN16	1,955	99475396
In line dirt separator Flanged DN 100 Max. working pressure 10 bar PN16	2,028	99475397
In line dirt separator Flanged DN 125 Max. working pressure 10 bar PN16	3,889	99475398
In line dirt separator Flanged DN 150 Max. working pressure 10 bar PN16	4,052	99475399
In line dirt separator Flanged DN 200 Max. working pressure 10 bar PN16	5,670	99475400
In line dirt separator Flanged DN 250 Max. working pressure 10 bar PN16	10,287	99475401
In line dirt separator Flanged DN 300 Max. working pressure 10 bar PN16	15,153	99475402

INLINE DIRT SEPARATORS - FLANGE CONNECTIONS MAGNETIC- Max temp 110 Deg C

Description	£	Product Code
In line dirt separator Flanged DN 50 Max. working pressure 10 bar PN16 Magnetic	1,612	99529716
In line dirt separator Flanged DN 65 Max. working pressure 10 bar PN16 Magnetic	1,663	99529718
In line dirt separator Flanged DN 80 Max. working pressure 10 bar PN16 Magnetic	2,215	99529719
In line dirt separator Flanged DN 100 Max. working pressure 10 bar PN16 Magnetic	2,343	99529721
In line dirt separator Flanged DN 125 Max. working pressure 10 bar PN16 Magnetic	4,539	99529722
In line dirt separator Flanged DN 150 Max. working pressure 10 bar PN16 Magnetic	4,831	99529723
In line dirt separator Flanged DN 200 Max. working pressure 10 bar PN16 Magnetic	7,201	99529724
In line dirt separator Flanged DN 250 Max. working pressure 10 bar PN16 Magnetic	12,915	99529725
In line dirt separator Flanged DN 300 Max. working pressure 10 bar PN16 Magnetic	18,180	99529726

INLINE AIR AND DIRT SEPARATORS - FLANGE CONNECTIONS- Max temp 110 Deg C

Description	£	Product Code
In line dirt separator Flanged DN 50 Max. working pressure 10 bar PN16	1,859	99499243
In line dirt separator Flanged DN 65 Max. working pressure 10 bar PN16	1,955	99499245
In line dirt separator Flanged DN 80 Max. working pressure 10 bar PN16	2,386	99499246
In line dirt separator Flanged DN 100 Max. working pressure 10 bar PN16	2,620	99499247
In line dirt separator Flanged DN 125 Max. working pressure 10 bar PN16	4,530	99499248
In line dirt separator Flanged DN 150 Max. working pressure 10 bar PN16	4,889	99499249
In line dirt separator Flanged DN 200 Max. working pressure 10 bar PN16	7,093	99499251
In line dirt separator Flanged DN 250 Max. working pressure 10 bar PN16	11,783	99499253
In line dirt separator Flanged DN 300 Max. working pressure 10 bar PN16	20,790	99499254

INLINE AIR AND DIRT SEPARATORS - FLANGE CONNECTIONS MAGNETIC- Max temp 110 Deg C

Description	£	Product Code
In line dirt separator Flanged DN 50 Max. working pressure 10 bar PN16 Magnetic	2,069	99499258
In line dirt separator Flanged DN 65 Max. working pressure 10 bar PN16 Magnetic	2,140	99499259
In line dirt separator Flanged DN 80 Max. working pressure 10 bar PN16 Magnetic	2,705	99499260
In line dirt separator Flanged DN 100 Max. working pressure 10 bar PN16 Magnetic	2,859	99499261
In line dirt separator Flanged DN 125 Max. working pressure 10 bar PN16 Magnetic	5,152	99499262
In line dirt separator Flanged DN 150 Max. working pressure 10 bar PN16 Magnetic	5,635	99499273
In line dirt separator Flanged DN 200 Max. working pressure 10 bar PN16 Magnetic	7,983	99499275
In line dirt separator Flanged DN 250 Max. working pressure 10 bar PN16 Magnetic	14,432	99499276
In line dirt separator Flanged DN 300 Max. working pressure 10 bar PN16 Magnetic	20,948	99499277

Note - The above are Category 4 items for discount purposes.



CATEGORY 3 -Grundfos Vortex Flow Sensors (VFI) for industrial applications

Threaded Conection BSP

Description	EPDM	FKM	Connection	Flowrate M3/h	£	Product Code
VFI/-0.3-6m/1/C/M5.00-X/EG6/SS/07P/AC-1	•		1¼" BSP	0.3-6	820	97688334
VFI/-0.3-6m/1/C/M5.00-X/VG6/SS/07P/AC-1		•	1¼" BSP	0.3-6	820	97688342
VFI/-0.6-12m/1/C/M5.00-X/EG6/SS/07P/AC-1	•		1¼" BSP	0.6-12	945	97688335
VFI/-0.6-12m/1/C/M5.00-X/VG6/SS/07P/AC-1		•	1¼" BSP	0.6-12	945	97688343
VFI/-1.3-25m/1/C/M5.00-X/EG6/SS/09P/AC-1	•		1½" BSP	1.3-25	1085	97688336
VFI/-1.3-25m/1/C/M5.00-X/VG6/SS/09P/AC-1		•	1½" BSP	1.3-25	1085	97688344

5 m connection cable with M12x1 4 -pin connector included

Gaskets included

Union nuts included

Medium: water , glycol water with viscosities

Tube material : stainless steel 1.4408

Temperature: -30 ° C ... 120 ° C , non-freezing (restricted temperature range FKM)

Union Nut material stainless steel 1.4408

Pressure: max. 25 bar

Degree of protection : IP 67 Housing material : Stainless steel 1.4404

Flow measurement accuracy : + / - 1.5% FS (0 - 100 ° C)

Power supply: 11 - 30 VDC

Output: 4 to 20 mA



NOTE - All list prices above are subject to Category 4 discount terms

CATEGORY 3 - Grundfos Vortex Flow Sensors (VFI) for industrial applications

Flanged connection Cast Iron

Description	EPDM	FKM	Connection	Flowrate M3/h	£	Product Code
VFI/-0.3-6m/1/C/M5.00-X/EG6/SG/30F/AC-1	•		DN 25/32	0.3-6	1,050	97686127
VFI/-0.3-6m/1/C/M5.00-X/VG6/SG/30F/AC-1		•	DN 25/32	0.3-6	1,050	97686128
VFI/-0.6-12m/1/C/M5.00-X/EG6/SG/30F/AC-1	•		DN 25/32	0.6-12	1,207	97686129
VFI/-0.6-12m/1/C/M5.00-X/VG6/SG/30F/AC-1		•	DN 25/32	0.6-12	1,207	97686130
VFI/-1.3-25m/1/C/M5.00-X/EG6/SG/30F/AC-1	•		DN 25/32	1.3-25	1,390	97686141
VFI/-1.3-25m/1/C/M5.00-X/VG6/SG/30F/AC-1		•	DN 25/32	1.3-25	1,390	97686142
VFI/-2-40m/1/C/M5.00-X/EG6/SG/31F/AC-1	•		DN 40	2.0-40	1,601	97686143
VFI/-2-40m/1/C/M5.00-X/VG6/SG/31F/AC-1		•	DN 40	2.0-40	1,601	97686144
VFI/-3.2-64m/1/C/M5.00-X/EG6/SG/32F/AC-1	•		DN 50	3.2-64	1,794	97686145
VFI/-3.2-64m/1/C/M5.00-X/VG6/SG/32F/AC-1		•	DN 50	3.2-64	1,794	97686146
VFI/5.2-104m/1/C/M5.00-X/EG6/SG/33F/AC-1	•		DN 65	5.2-104	1,917	97686147
VFI/5.2-104m/1/C/M5.00-X/VG6/SG/33F/AC-1		•	DN 65	5.2-104	1,917	97686148
VFI/-8-160m/1/C/M5.00-X/EG6/SG/35F/AC-1	•		DN 80	8.0-160	1,948	97686149
VFI/-8-160m/1/C/M5.00-X/VG6/SG/35F/AC-1		•	DN 80	8.0-160	1,948	97686150
VFI/-12-240m/1/C/M5.00-X/EG6/SG/37F/AC-1	•		DN 100	12.0-240	2,039	97686151
VFI/-12-240m/1/C/M5.00-X/VG6/SG/37F/AC-1		•	DN 100	12.0-240	2,039	97686152

Flanged connection Stainless Steel

Description	EPDM	FKM	Connection	Flowrate M3/h	£	Product Code
VFI/-0.3-6m/1/C/M5.00-X/EG6/SS/30F/AC-1	•		DN 25/32	0.3-6	1,271	97688293
VFI/-0.3-6m/1/C/M5.00-X/VG6/SS/30F/AC-1		•	DN 25/32	0.3-6	1,271	97688294
VFI/-0.6-12m/1/C/M5.00-X/EG6/SS/30F/AC-1	•		DN 25/32	0.6-12	1,449	97688295
VFI/-0.6-12m/1/C/M5.00-X/VG6/SS/30F/AC-1		•	DN 25/32	0.6-12	1,449	97688296
VFI/-1.3-25m/1/C/M5.00-X/EG6/SS/30F/AC-1	•		DN 25/32	1.3-25	1,670	97688297
VFI/-1.3-25m/1/C/M5.00-X/VG6/SS/30F/AC-1		•	DN 25/32	1.3-25	1,670	97688298
VFI/-2-40m/1/C/M5.00-X/EG6/SS/31F/AC-1	•		DN 40	2.0-40	1,876	97688299
VFI/-2-40m/1/C/M5.00-X/VG6/SS/31F/AC-1		•	DN 40	2.0-40	1,876	97688300
VFI/-3.2-64m/1/C/M5.00-X/EG6/SS/32F/AC-1	•		DN 50	3.2-64	1,962	97688301
VFI/-3.2-64m/1/C/M5.00-X/VG6/SS/32F/AC-1		•	DN 50	3.2-64	1,962	97688302
VFI/5.2-104m/1/C/M5.00-X/EG6/SS/33F/AC-1	•		DN 65	5.2-104	2,087	97688303
VFI/5.2-104m/1/C/M5.00-X/VG6/SS/33F/AC-1		•	DN 65	5.2-104	2,087	97688304
VFI/-8-160m/1/C/M5.00-X/EG6/SS/35F/AC-1	•		DN 80	8.0-160	2,122	97688305
VFI/-8-160m/1/C/M5.00-X/VG6/SS/35F/AC-1		•	DN 80	8.0-160	2,122	97688306
VFI/-12-240m/1/C/M5.00-X/EG6/SS/37F/AC-1	•		DN 100	12.0-240	2,244	97688308
VFI/-12-240m/1/C/M5.00-X/VG6/SS/37F/AC-1		•	DN 100	12.0-240	2,244	97688309

5 m connection cable with M12x1 4 -pin connector included

Gaskets Included.

Tube material : stainless steel 1.4408

Temperature: -30 ° C ... 120 ° C , non-freezing (restricted temperature range FKM)

Flange material : Stainless steel 1.4401 or cast iron

Pressure: max. 25 bar

Degree of protection : IP 67 Housing material : Stainless steel 1.4404

Flow measurement accuracy : + / - 1.5% FS (0 - 100 ° C)

Power supply: 11 - 30 VDC



NOTE - All list prices above are subject to Category 4 discount terms

CATEGORY 3 -Grundfos differential pressure sensor DPI and DPI+T with G ½ connection thread for indust

Grundfos differential pressure sensor DPI

Description	EPDM	FKM	Connection	Pressure Rating	£	Product Code
DPI/--0-0.6b/2/C/M2.00-X/EG6/--/03P/SW-1	•		G1/2	0-0.6	530	97747194
DPI/--0-0.6b/2/C/M2.00-X/VG6/--/03P/SW-1		•	G1/2	0-0.6	530	97747215
DPI/--0-1.0b/2/C/M2.00-X/EG6/--/03P/SW-1	•		G1/2	0-1.0	530	97747195
DPI/--0-1.0b/2/C/M2.00-X/VG6/--/03P/SW-1		•	G1/2	0-1.0	530	97747216
DPI/--0-1.6b/2/C/M2.00-X/EG6/--/03P/SW-1	•		G1/2	0-1.6	530	97747196
DPI/--0-1.6b/2/C/M2.00-X/VG6/--/03P/SW-1		•	G1/2	0-1.6	530	97747218
DPI/--0-2.5b/2/C/M2.00-X/EG6/--/03P/SW-1	•		G1/2	0-2.5	530	97747197
DPI/--0-2.5b/2/C/M2.00-X/VG6/--/03P/SW-1		•	G1/2	0-2.5	530	97747219
DPI/--0-4.0b/2/C/M2.00-X/EG6/--/03P/SW-1	•		G1/2	0-4.0	530	97747198
DPI/--0-4.0b/2/C/M2.00-X/VG6/--/03P/SW-1		•	G1/2	0-4.0	530	97747220
DPI/--0-6.0b/2/C/M2.00-X/EG6/--/03P/SW-1	•		G1/2	0-6.0	530	97747199
DPI/--0-6.0b/2/C/M2.00-X/VG6/--/03P/SW-1		•	G1/2	0-6.0	530	97747241
DPI/---0-10b/2/C/M2.00-X/EG6/--/03P/SW-1	•		G1/2	0-10.0	530	97747200
DPI/---0-10b/2/C/M2.00-X/VG6/--/03P/SW-1		•	G1/2	0-10.0	530	97747242
DPI/---0-16b/2/C/M2.00-X/EG6/--/03P/SW-1	•		G1/2	0-16.0	530	97747201
DPI/---0-16b/2/C/M2.00-X/VG6/--/03P/SW-1		•	G1/2	0-16.0	530	97747243

Grundfos differential pressure Plus temperature sensor DPI+T

Description	EPDM	FKM	Connection	Pressure Rating	£	Product Code
DPI/--0-0.6b/2/F/M2.00-X/EG6/--/03P/SW-1	•		G1/2	0-0.6	579	97747202
DPI/--0-0.6b/2/F/M2.00-X/VG6/--/03P/SW-1		•	G1/2	0-0.6	579	97747244
DPI/--0-1.0b/2/F/M2.00-X/EG6/--/03P/SW-1	•		G1/2	0-1.0	579	97747203
DPI/--0-1.0b/2/F/M2.00-X/VG6/--/03P/SW-1		•	G1/2	0-1.0	579	97747245
DPI/--0-1.6b/2/F/M2.00-X/EG6/--/03P/SW-1	•		G1/2	0-1.6	579	97747204
DPI/--0-1.6b/2/F/M2.00-X/VG6/--/03P/SW-1		•	G1/2	0-1.6	579	97747246
DPI/--0-2.5b/2/F/M2.00-X/EG6/--/03P/SW-1	•		G1/2	0-2.5	579	97747205
DPI/--0-2.5b/2/F/M2.00-X/VG6/--/03P/SW-1		•	G1/2	0-2.5	579	97747247
DPI/--0-4.0b/2/F/M2.00-X/EG6/--/03P/SW-1	•		G1/2	0-4.0	579	97747206
DPI/--0-4.0b/2/F/M2.00-X/VG6/--/03P/SW-1		•	G1/2	0-4.0	579	97747249
DPI/--0-6.0b/2/F/M2.00-X/EG6/--/03P/SW-1	•		G1/2	0-6.0	579	97747207
DPI/--0-6.0b/2/F/M2.00-X/VG6/--/03P/SW-1		•	G1/2	0-6.0	579	97747250
DPI/---0-10b/2/F/M2.00-X/EG6/--/03P/SW-1	•		G1/2	0-10.0	579	97747208
DPI/---0-10b/2/F/M2.00-X/VG6/--/03P/SW-1		•	G1/2	0-10.0	579	97747251
DPI/---0-16b/2/F/M2.00-X/EG6/--/03P/SW-1	•		G1/2	0-16.0	579	97747209
DPI/---0-16b/2/F/M2.00-X/VG6/--/03P/SW-1		•	G1/2	0-16.0	579	97747252

Temperature measuring accuracy (RPI with temperature):

+ / - 1 °C (0 to 80 °C)

+ / - 2 °C (0 to 100 °C)

Degree of protection : IP 67

The electrical connection is via an M12 x 1 4-pin 2 m connection cable is included.

The Pressure connection is made via a G ½ connection with external thread and a connection 7/16 UNF for the second (for example, via a capillary). A 1000 mm long capillary tube is included.

Power supply: 12.5-30 V (4-20 mA) / 16.6-30 V (0-10 V)

Output signal: 4-20 mA two wire DPI

0 - 10 V for differential pressure and temperature at DPI

Materials: stainless steel 1.4404 , EPDM

Dimensions: Ø 39 x 40 mm



CATEGORY 3 - DIFFERENTIAL TEMPERATURE TRANSDUCER KIT - FOR SEALED CIRCUIT APPLICATIONS

Item	Temperature range	£	Product Code
Honsberg ETSD	0 to 20°C differential	1214	96409362
Honsberg ETSD	0 to 50°C differential	1244	96409363

Temperature operating range: -25 to +105°C.

Output signal: 4-20mA

NOTE - All list prices above are subject to Category 4 discount terms

CATEGORY 3 -Grundfos relative pressure sensor RPI and RPI-T with G 1/2 connection thread for industrial application

Grundfos Relative pressure sensor RPI

Description	EPDM	FKM	Connection	Pressure Rating	£	Product Code
RPI/-0-0.6b/1/C/M2.00-X/EG6/--/03P/SD-1	•		G1/2	0-0.6	294	97748907
RPI/-0-0.6b/1/C/M2.00-X/VG6/--/03P/SD-1		•	G1/2	0-0.6	294	97748948
RPI/-0-1.0b/1/C/M2.00-X/EG6/--/03P/SD-1	•		G1/2	0-1.0	294	97748908
RPI/-0-1.0b/1/C/M2.00-X/VG6/--/03P/SD-1		•	G1/2	0-1.0	294	97748949
RPI/-0-1.6b/1/C/M2.00-X/EG6/--/03P/SD-1	•		G1/2	0-1.6	294	97748909
RPI/-0-1.6b/1/C/M2.00-X/VG6/--/03P/SD-1		•	G1/2	0-1.6	294	97748950
RPI/-0-2.5b/1/C/M2.00-X/EG6/--/03P/SD-1	•		G1/2	0-2.5	294	97748910
RPI/-0-2.5b/1/C/M2.00-X/VG6/--/03P/SD-1		•	G1/2	0-2.5	294	97748951
RPI/-0-4.0b/1/C/M2.00-X/EG6/--/03P/SD-1	•		G1/2	0-4.0	294	97748921
RPI/-0-4.0b/1/C/M2.00-X/VG6/--/03P/SD-1		•	G1/2	0-4.0	294	97748952
RPI/-0-6.0b/1/C/M2.00-X/EG6/--/03P/SD-1	•		G1/2	0-6.0	294	97748922
RPI/-0-6.0b/1/C/M2.00-X/VG6/--/03P/SD-1		•	G1/2	0-6.0	294	97748953
RPI/-0-10b/1/C/M2.00-X/EG6/--/03P/SD-1	•		G1/2	0-10.0	294	97748923
RPI/-0-10b/1/C/M2.00-X/VG6/--/03P/SD-1		•	G1/2	0-10.0	294	97748954
RPI/-0-16b/1/C/M2.00-X/EG6/--/03P/SD-1	•		G1/2	0-16.0	294	97748924
RPI/-0-16b/1/C/M2.00-X/VG6/--/03P/SD-1		•	G1/2	0-16.0	294	97748955
RPI/-0-25b/1/C/M2.00-X/EG6/--/03P/SD-1	•		G1/2	0-25.0	294	97748925
RPI/-0-25b/1/C/M2.00-X/VG6/--/03P/SD-1		•	G1/2	0-25.0	294	97748956

Grundfos Relative pressure sensor Plus temperature sensor RPI+T

Description	EPDM	FKM	Connection	Pressure Rating	£	Product Code
RPI/-0-0.6b/1/F/M2.00-X/EG6/--/03P/SD-1	•		G1/2	0-0.6	329	97748926
RPI/-0-0.6b/1/F/M2.00-X/VG6/--/03P/SD-1		•	G1/2	0-0.6	329	97748957
RPI/-0-1.0b/1/F/M2.00-X/EG6/--/03P/SD-1	•		G1/2	0-1.0	329	97748928
RPI/-0-1.0b/1/F/M2.00-X/VG6/--/03P/SD-1		•	G1/2	0-1.0	329	97748958
RPI/-0-1.6b/1/F/M2.00-X/EG6/--/03P/SD-1	•		G1/2	0-1.6	329	97748929
RPI/-0-1.6b/1/F/M2.00-X/VG6/--/03P/SD-1		•	G1/2	0-1.6	329	97748959
RPI/-0-2.5b/1/F/M2.00-X/EG6/--/03P/SD-1	•		G1/2	0-2.5	329	97748930
RPI/-0-2.5b/1/F/M2.00-X/VG6/--/03P/SD-1		•	G1/2	0-2.5	329	97748960
RPI/-0-4.0b/1/F/M2.00-X/EG6/--/03P/SD-1	•		G1/2	0-4.0	329	97748941
RPI/-0-4.0b/1/F/M2.00-X/VG6/--/03P/SD-1		•	G1/2	0-4.0	329	97748961
RPI/-0-6.0b/1/F/M2.00-X/EG6/--/03P/SD-1	•		G1/2	0-6.0	329	97748942
RPI/-0-6.0b/1/F/M2.00-X/VG6/--/03P/SD-1		•	G1/2	0-6.0	329	97748962
RPI/-0-10b/1/F/M2.00-X/EG6/--/03P/SD-1	•		G1/2	0-10.0	329	97748944
RPI/-0-10b/1/F/M2.00-X/VG6/--/03P/SD-1		•	G1/2	0-10.0	329	97748963
RPI/-0-16b/1/F/M2.00-X/EG6/--/03P/SD-1	•		G1/2	0-16.0	329	97748945
RPI/-0-16b/1/F/M2.00-X/VG6/--/03P/SD-1		•	G1/2	0-16.0	329	97748964
RPI/-0-25b/1/F/M2.00-X/EG6/--/03P/SD-1	•		G1/2	0-25.0	329	97748946
RPI/-0-25b/1/F/M2.00-X/VG6/--/03P/SD-1		•	G1/2	0-25.0	329	97748965

Grundfos Relative pressure sensor Plus temperature sensor RPI+T

				£	Product Code	
RPI/---0-16b/2/F/M2.00-X/EG6/--/03P/SD-1	•		G1/2	0-16.0	291	98355521

Temperature measuring accuracy (RPI with temperature):

+ / - 1 C (0 to 80 ° C)

+ / - 2 C (0 to 100 ° C)

Degree of protection : IP 67

The electrical connection is via an M12 x 1 4-pin plug. A 2 m long connection cable is included.

Power supply: 12.5-30 V (4-20 mA) / 16.6-30 V (0-10 V)

Output signal: 4-20 mA two wire / RPI

0 - 10 V for pressure and temperature / RPI

Materials: stainless steel 1.4404 , EPDM

Dimensions: Ø 39 x 40 mm



NOTE - All list prices above are subject to Category 4 discount terms

CATEGORY 3 - Grundfos Industrial Sensors Accessories

Grundfos Industrial Sensor Connection Cable

Description	Connection		£	Product Code
Cable M2.00-X/-B-1	M12	2 Metres	41	98374260
Cable M5.00-X/-B-1	M12	5 Meters	58	98374271



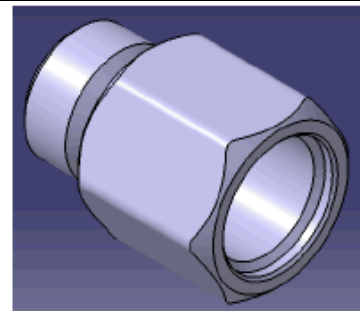
Grundfos Industrial Sensors. Extension Kit For Direct connection To Medium and Large CR pumps.

Description	Qty per pack	£	Product Code
IDS DPI/RPI Extension Kit	1	24	98420667

		Size											
Family		1	3	5	10	15	20	32	45	64	90	120	150
	CRE	✓	✓	✓	✓	!	!	!	✗	✗	✗	✗	✗
	CRIE	✓	✓	✓	✓	!	!						
	CRNE	✓	✓	✓	✓	!	!	!	✗	✗	✗	✗	✗

Legend:

- ✓ Does not require adaptor.
- ! Only requires adaptor if transmitter and coupling guard touches, creating noise.
- ✗ Does always require adaptor.



Grundfos Industrial Sensors. Differential Pressure Capillary Tube.

Description	Qty per pack	£	Product Code
Capillary tube UNS7/16", 1w 1m length	1	24	98469210



Grundfos Sensor power supplies

Model	£	Product Code
SI 001 PSU	307	96915820
SI 010 CNV	204	96983684



NOTE - All list prices above are subject to Category 4 discount terms

Notes

CONDITIONS OF SALE AND SERVICE

The Customer's attention is particularly drawn to the provisions of condition 13 (Warranty and Limitation of Liability)

1. INTERPRETATION

- 1.1 The definitions and rules of interpretation in this condition apply in these Conditions.

Agreement: the contract between Grundfos and the Customer for the supply of Equipment and/or Services in accordance with the Order and these Conditions
Business Day: a day other than a Saturday, Sunday or bank or public holiday in England when banks in London are open for non-automated business.

CDM Regulations: the Construction (Design and Management) Regulations 2015
Conditions: these terms and conditions as amended from time to time in accordance with condition 19.

Customer: the person, firm or company who purchases Equipment and/or Services from Grundfos.

Data Protection Legislation: all legislation and regulatory requirements in force from time to time relating to the use of personal data and the privacy of electronic communications, including, without limitation (i) any data protection legislation from time to time in force in the UK including the Data Protection Act 2018 or any successor legislation, as well as (ii) the General Data Protection Regulation (EU) 2016/679 and any other directly applicable European Union regulation relating to data protection and privacy (for so long as and to the extent that the law of the European Union has legal effect in the UK).

Delivery Location: the location set out in the Order for delivery of the Equipment and/or Services or such other location as the parties may agree.

Equipment: all equipment, materials, goods and/or products, or any part or parts thereof, supplied by Grundfos to the Customer under this Agreement or used by Grundfos or its subcontractors in the supply of the Services.

Equipment Specification: any specification for the Equipment, including any relevant plans or drawings, that is agreed in writing by the Customer and Grundfos.

Event of Default: any occurrence of the events set out in condition 17.1 or 17.2.

Force Majeure Event: acts, events, omissions or accidents beyond its reasonable control, including (without limitation) strikes, lock-outs or other industrial disputes (whether involving any supplier, contractor or agent of Grundfos or any other party beyond its reasonable control), failure of a utility service or transport network, act of God, war or threat of war, sabotage, riot, civil commotion, malicious damage, compliance with any law or governmental order, rule, regulation or direction, import or export embargoes, accident, breakdown of plant or machinery, fire, flood, storm or default of suppliers or subcontractors, difficulties in obtaining raw materials, labour, fuel, parts or machinery.

Grundfos: Grundfos Pumps Limited (Company No: 00805960) whose registered office is at Grovebury Road, Leighton Buzzard, Bedfordshire LU7 4TL.

Health and Safety File: the health and safety file required by the CDM Regulations.

In-put Material: all documents, information, tools and materials of the Customer required by Grundfos for the proper provision of the Services.

Intellectual Property Rights: patents, rights to inventions, copyright and related rights, trade marks, business names and domain names, rights in get-up, goodwill and the right to sue for passing off, rights in designs, database rights, rights to use, and protect the confidentiality of, confidential information (including know-how), and all other intellectual property rights, in each case whether registered or unregistered and including all applications and rights to apply for and be granted, renewals or extensions of, and rights to claim priority from, such rights and all similar or equivalent rights or forms of protection which subsist or will subsist now or in the future in any part of the world.

Maintenance Schedule: the maintenance schedule attached to the Order setting out the Services to be supplied by Grundfos to the Customer.

Order: the service support agreement or site visit request form in each case on Grundfos' standard terms (whichever is applicable) including any schedules attached to the service support agreement or site visit request form.

Payment Schedule: the payment schedule attached to the Order setting out the charges applicable for the provision of the Services by Grundfos to the Customer.

Premium Service: the service package in accordance with Grundfos' terms as set out in the Agreement.

Quotation: a written quotation issued by Grundfos.

Services: the services to be provided by Grundfos under this Agreement as set out in the Order or site visit request form together with any other services which Grundfos provides, or agrees to provide, to the Customer.

Site visit request form: Grundfos' Site Visit and Commissioning Request Form, or the equivalent internet log, which the Customer completes.

Time and Materials Rate: the rates set out in the Order.

Warranty: (Subject to condition 5.5) the warranty provided by Grundfos in respect of the Services as set out in condition 8.4 and Equipment as set out in condition 5.1 of these Conditions (as applicable).

Warranty Period: for product codes UPS2, UPS3, ALPHA1, ALPHA2, ALPHA3 and SCALIA2 the warranty period shall be 5 years from the date of the manufacture and in all other cases the warranty period shall be 24 months from installation or 30 months from the date of manufacture (whichever expires soonest).

- 1.2 Headings in these conditions shall not affect their interpretation.

- 1.3 A person includes a natural person, corporate or unincorporated body (whether or not having separate legal personality).

- 1.4 The schedules and annexes form part of this Agreement.

- 1.5 A reference to writing or written includes fax and email and electronic chat messages.

- 1.6 Any obligation in this Agreement on a person not to do something includes, without limitation, an obligation not to agree, allow, permit or acquiesce in that thing being done.

- 1.7 References to schedules and annexes are to the schedules and annexes of the Order.

- 1.8 A reference to a statute or statutory provision is a reference to it as amended or re-enacted. A reference to a statutory provision includes all subordinate legislation made under that statute or statutory provision.

2. Basis of Agreement

- 2.1 The Order constitutes an offer by the Customer to purchase Equipment and/or Services in accordance with these Conditions.

- 2.2 The Order shall only be deemed to be accepted on the earlier of:

(a) an authorised representative of Grundfos issues written acceptance of the Order; or

(b) Grundfos delivers the Equipment and/or commences providing Services to the Customer in line with the Order, at which point and on which the date this Agreement shall come into existence.

- 2.3 Any samples, drawings, descriptive matter or advertising issued by Grundfos and any descriptions of the Equipment or illustrations or descriptions of the Services contained in Grundfos' catalogues or brochures are issued or published for the sole purpose of giving an approximate idea of the Services and/or Equipment described in them.

No warranty or guarantee is given for their accuracy and they shall not form part of this Agreement or have any contractual force.

- 2.4 These Conditions shall:

(a) apply to and be incorporated into this Agreement;

(b) prevail over any other terms that the Customer seeks to impose or incorporate; and

(c) prevail over any terms or conditions implied by law, trade custom, practice or course of dealing between Grundfos, the Customer or otherwise.

- 2.5 These Conditions are subject to any terms, conditions and/or provisions set out in the Order. In the event of any conflict between the terms of these Conditions and the terms of the Order, the provisions of the Order shall prevail, but any special terms granted in respect of any one Order are not applicable to any subsequent Order without the express consent in writing by Grundfos.

- 2.6 Quotations shall only be valid if issued in writing.

- 2.7 Any Quotations are given on the basis that no Agreement shall come into existence except in accordance with condition 2.2. Any Quotation is valid for a period of 30 days from its date (unless otherwise agreed by Grundfos), provided that Grundfos has not previously withdrawn it.

- 2.8 All of these Conditions shall apply to the supply of both Equipment and Services except where application to one or the other is specified.

- 2.9 Any special terms agreed to by Grundfos for any Order shall not apply to any subsequent Order without the express agreement of an authorised representative of Grundfos.

- 2.10 The Customer is responsible for ensuring the accuracy of the terms of the Order and for providing to Grundfos in good time any necessary information required by Grundfos to enable Grundfos to perform its obligations under the Agreement.

- 2.11 Grundfos' minimum order value is £55.00. Orders between £55.00 and £335 for pumps or £130 for Category 4 items will be subject to a £37 handling fee.

3. Equipment

- 3.1 The Equipment is described in Grundfos' catalogues as modified in any Equipment Specification.

- 3.2 Unless confirmed in writing by Grundfos, Grundfos makes no representation as to the suitability of the Equipment for the Customer's particular purpose. The Customer will be responsible for ensuring that the Equipment is suitable for its particular purpose and Grundfos shall have no liability to the Customer if the Equipment is not suitable for the Customer's particular purpose (so far as legally possible).

- 3.3 Grundfos (and/or its subcontractors, suppliers or agents) reserves the right to:

(a) change the design, construction or composition of the Equipment or the materials or equipment used in the Equipment as it shall think fit; and

(b) amend the Equipment Specification of the Equipment if required by any applicable statutory requirements, and shall, in any case, notify the Customer of any such changes (if such changes are effected after this Agreement has come into existence but before the Equipment and/or Services have been fully performed).

- 3.4 Samples of Equipment are available for inspection at Grundfos' offices. The samples are ex-stock at the time of viewing and are without guarantee as to colour or dimensions at the time of delivery. The viewing of a sample does not create a sale by sample.

4. Delivery of Equipment

- 4.1 Grundfos shall deliver the Equipment to the Delivery Location.

- 4.2 Delivery of the Equipment shall be completed on:

(a) the completion of unloading of the Equipment at the Delivery Location or (in the absence of any specified Delivery Location by the Customer) upon Grundfos informing the Customer that the Equipment is ready; or

(b) (if the Customer or its agents and/or representatives elect to unload the Equipment themselves) upon Grundfos placing the Equipment at the disposal of the Customer, its agents or representatives at the agreed point.

- 4.3 Grundfos' obligation under condition 4.1 is limited to delivering the Equipment only as near to the Delivery Location as a safe hard road permits. The Customer is to provide to Grundfos, free of charge, reasonable assistance with unloading (unless the Customer elects to unload the Equipment itself).

- 4.4 Any dates quoted for delivery of the Equipment are approximate only, and the time of delivery is not of the essence. Grundfos shall not be liable for any delay (or any additional costs arising out of the delay) in delivery of the Equipment that is caused by a Force Majeure Event or the Customer's failure to provide Grundfos with adequate delivery instructions or any other instructions that are relevant to the supply of the Equipment.

- 4.5 The Equipment may be delivered in advance of the quoted delivery date upon giving reasonable notice to the Customer.

- 4.6 If the Customer fails to take delivery of the Equipment or fails to give Grundfos adequate delivery instructions at the time stated for delivery (otherwise than by reason of Grundfos' sole fault) then, without prejudice to any other right or remedy available to Grundfos:

(a) delivery of the Equipment shall be deemed to have been completed at 9.00am on the next Business Day following the day on which Grundfos notified the Customer that the Equipment was ready; and

(b) Grundfos may:

(i) Charge a re-delivery fee if delivery is rearranged by Grundfos and the Customer;

(ii) store the Equipment until actual delivery takes place, and charge the Customer for all related costs and expenses (including insurance) of such storage;

(iii) apply Grundfos' returns policy as set out in condition 6; or

(iv) sell the Equipment at the best price readily obtainable and (after deducting all reasonable storage and selling expenses) charge the Customer for any shortfall below the price payable by the Customer for the Equipment and Services (as applicable) under this Agreement.

- 4.7 If the parties have agreed on express delivery, the dates quoted for such delivery and agreed delivery dates are approximate only as delivery may vary due to factors not within Grundfos' reasonable control, e.g. leisurely or delayed customs clearance or other import or export obstacles. The parties agree that time of delivery is not of the essence and that Grundfos shall not be liable for any delay (or any additional costs arising out of the delay) in delivery caused by such events.

- 4.8 Grundfos may deliver the Equipment by instalments.

- 4.9 If Equipment is not received by the customer within 7 days of notification of dispatch by Grundfos or if it is received in a damaged condition or the quantity received differs from the quantity advised by Grundfos the Customer shall notify Grundfos in writing. If such written notice is not received by Grundfos within 10 days of the date of Grundfos' dispatch notification, Grundfos will not be liable in respect of any loss or damaged suffered.

- 4.10 If a proof of delivery is required a £10 handling fee will apply.

- 4.11 Proof of delivery shall only be retained by Grundfos for 3 months following delivery. After 3 months it shall be assumed by both parties that delivery successfully took place unless there is evidence to the contrary.

- 4.12 A £20 handling fee will apply per order to all orders for spares, pump components, spares kits and ancillary items such as flanges, unions etc.

5. **Quality of Equipment**
- 5.1 For the duration of the Warranty Period, Grundfos warrants that the Equipment shall:
- (a) (subject to conditions 5.3 and 5.4) conform in all material respects with the Equipment Specification; and
- (b) be free from defects in design, material and workmanship.
- 5.2 Subject to condition 5.3, if:
- (a) the Customer gives notice in writing during the Warranty Period within 14 days of discovery that some or all of the Equipment does not comply with the Warranty set out in condition 5.1;
- (b) Grundfos is given a reasonable opportunity to examine such Equipment; and
- (c) the Customer (if reasonably asked to do so by Grundfos) returns such Equipment to Grundfos (at Grundfos' cost), then Grundfos shall, at its option, repair or replace the defective Equipment, or refund the price of the defective Equipment in full. Repairs shall only be carried out between 8am and 5pm on Business Days agreed between Grundfos and Customer.
- 5.3 Grundfos shall not be liable for the Equipment's failure to comply with the Warranty if:
- (a) the Customer makes any further use of such Equipment after giving a notice in accordance with condition 5.2 unless otherwise approved by Grundfos (such approval not to be withheld unreasonably);
- (b) the defect arises because the Customer failed to follow Grundfos' or manufacturer's oral or written instructions as to the storage, installation, commissioning, use or maintenance of the Equipment or (if there are none) good trade practice;
- (c) the defect arises as a result of Grundfos following any drawing, design supplied by the Customer or the Equipment Specification;
- (d) the Customer alters, dismantles or repairs such Equipment without the written consent of Grundfos;
- (e) the defect arises as a result of fair wear and tear, wilful damage, negligence, or abnormal working conditions; or
- (f) the Equipment differs from its description as a result of changes made to ensure they comply with applicable statutory or regulatory standards.
- 5.4 Except as provided in this condition 5, Grundfos shall have no liability to the Customer in respect of the Equipment's failure to comply with the Warranty.
- 5.5 The terms of these Conditions shall apply to any repaired or replacement Equipment supplied by Grundfos under condition 5.2 but for the avoidance of doubt, the Warranty Period for any repaired or replaced Equipment shall be 12 months from the date of the repair.
6. **Return of Equipment**
- 6.1 Equipment may not be returned to Grundfos except by the prior written permission of an authorised representative of Grundfos. Contact grundfos-uk@sales.grundfos.com with the original purchase order number to arrange a return. Any such return shall be liable for any handling and restocking fees charged by Grundfos.
- 6.2 All Equipment requested to be returned to Grundfos will be subject to a minimum 35% restocking fee (subject to inspection). Equipment must be returned in its original packaging.
- 6.3 Equipment can only be returned within 6 months of the date of dispatch by Grundfos. All returns will be subject to inspection to ascertain age, condition and type.
- 6.4 Equipment returned without prior authorisation will be refused delivery by Grundfos.
- 6.5 The following Equipment cannot be returned for credit in any circumstance:
- (a) items with a net value of less than £125 (per item);
- (b) repair kits, power cable, engineered to order, third party sourced and obsolete items.
- 6.6 Any Equipment that has been in contact with hazardous liquids must be cleaned, sealed in appropriate packaging, clearly labelled and accompanied by a COSHH certification by the Customer. Any carrier used must be licensed to carry to transport the relevant hazardous liquids.
7. **Title and Risk**
- 7.1 The risk in the Equipment shall pass to the Customer on completion of delivery in accordance with condition 4.
- 7.2 Title to the Equipment shall not pass to the Customer until Grundfos receives payment in full (in cash or cleared funds) for the Equipment and any other equipment or goods that Grundfos has supplied to the Customer in respect of which payment has become due in which case title to the Equipment shall pass at the time of payment of all such sums.
- 7.3 Until title to the Equipment has passed to the Customer, the Customer shall:
- (a) hold the Equipment (or any receipts received from the Customer where the Customer has sold the Equipment) on a fiduciary basis as Grundfos' bailee;
- (b) store the Equipment separately from all other goods held by the Customer (where possible) so that they remain readily identifiable as Grundfos' property;
- (c) not remove, deface or obscure any identifying mark or packaging on or relating to the Equipment (unless reasonably required for the functioning use of the Equipment by the Customer);
- (d) maintain the Equipment in satisfactory condition and keep it insured against all risks for their full price on Grundfos' behalf from the date of delivery;
- (e) notify Grundfos immediately if the Customer becomes subject to any Event of Default;
- (f) give Grundfos such reasonable information relating to the Equipment as Grundfos may require from time to time;
- (g) give Grundfos at least 30 days' notice of its intention to move or relocate the Equipment to a new location. Grundfos may (at Grundfos' sole discretion) supervise the dismantling and removal of the Equipment, and inspect and reinstall the Equipment at the new location. Any supervision and work undertaken in respect of the relocation shall be charged at the prevailing Time and Material Rates and is payable by the Customer in accordance with condition 11; and
- (h) give Grundfos at least 14 days' notice of its intention to take any steps to appoint an administrator.
- 7.4 The Customer may incorporate the Equipment into or with any other goods provided that any new goods incorporating the Equipment shall become the sole and exclusive property of Grundfos and shall be separately stored and marked so as to be identifiable as being manufactured by or containing Equipment belonging to Grundfos.
- 7.5 Subject to condition 7.7, the Customer may resell the Equipment in the ordinary course of its business (but not otherwise) before Grundfos receives payment for the Equipment. However, if the Customer resells the Equipment before that time:
- (a) It does so as principal and not as Grundfos' agent;
- (b) Title to the Equipment shall pass from Grundfos to the Customer immediately before the time at which resale by the Customer occurs.
- 7.6 If before title to the Equipment passes to the Customer the Customer becomes subject to an Event of Default, then, without limiting any other right or remedy Grundfos may have, Grundfos may at any time:
- (a) the Customer's right to resell the Equipment or use it in the ordinary course of its business ceases immediately;
- (b) reasonably require the Customer to deliver up all Equipment in its possession; and
- (c) if the Customer fails to do so promptly, enter any premises of the Customer where the Equipment is stored in order to recover them; and
- (d) the Customer shall pay Grundfos' reasonable costs (including legal costs) for any recovery of the Equipment pursuant to condition 7.7(c).
8. **Supply of Services**
- 8.1 Grundfos shall provide the Services to the Customer in accordance with the Maintenance Schedule in all material respects and in accordance with the duration and timescales specified in the Order.
- 8.2 Grundfos shall use all reasonable endeavours to meet any performance dates for the Services specified in this Agreement, but any such dates shall be estimates only and time shall not be of the essence for the performance of the Services.
- 8.3 Grundfos shall have the right to make any changes to the Services which are necessary to comply with any applicable law or safety requirement, or which do not materially affect the nature or quality of the Services, and Grundfos shall notify the Customer in any such event. If Grundfos requests a change for any other reason, the Customer shall not unreasonably withhold or delay consent to it.
- 8.4 Grundfos warrants to the Customer that the Services will be provided using reasonable care and skill.
- 8.5 Grundfos shall use reasonable endeavours to observe all health and safety rules and regulations, and any other reasonable security requirements that apply at the Customer's premises and that have been communicated to it provided that it shall not be liable under this Agreement if, as a result of such observation, it is in breach of any of its obligations under this Agreement.
9. **Maintenance Service Times**
- 9.1 Services will be carried out during the working times as specified in the Maintenance Schedule.
- 9.2 Grundfos' standard daily fee rates for each individual person are calculated on the basis of an eight-hour day between 8.00am and 5.00pm on Business Days. Grundfos shall be entitled to charge for any Services undertaken outside of these hours at the Time and Materials Rate in effect at the relevant time.
- 9.3 Grundfos shall use reasonable endeavours to attend the Delivery Location, but if Grundfos is prevented by any reason outside his control or under the control of the Customer, from installing the Equipment or carrying out the Services at the time of the visit, it shall not constitute a material breach of this Agreement. If additional visits are required to the Delivery Location which are not accounted for in the Maintenance Schedule, Grundfos reserves the right to charge the Customer at the Time and Materials Rate for all additional time incurred.
10. **Customer's obligations**
- 10.1 The Customer shall:
- (a) ensure that the terms of the Order and the Equipment Specification are complete and accurate;
- (b) co-operate with Grundfos in all matters relating to this Agreement;
- (c) provide Grundfos, its employees, agents, consultants and subcontractors, with access to the Customer's premises, office accommodation and other facilities as reasonably required by Grundfos to provide the Services and/or deliver the Equipment;
- (d) prepare the Customer's premises (or the location where the Services are to be performed) for the supply of the Services and/or the Equipment;
- (e) provide adequate lighting, heating, power and ventilation as per Grundfos' reasonable requirements;
- (f) inform Grundfos' engineer or representative on each visit about any unsatisfactory running or irregular performance of the Equipment or equipment in respect of which the Services are undertaken.
- (g) ensure the Equipment is installed and kept in suitable premises and under suitable conditions, permit only trained and competent personnel to use it and follow any operating instructions as Grundfos may give from time to time;
- (h) provide a site visit request form to Grundfos in respect of any Services to be carried out by Grundfos, its agents, subcontractors, consultants or employees (as the case may be);
- (i) provide to Grundfos, in a timely manner, such In-put Material and other information as Grundfos may require and ensure that it is accurate in all material respects;
- (j) be responsible (at its own cost) for preparing and maintaining the relevant premises for the supply of the Services and/or Equipment, including identifying, monitoring, removing and disposing of any hazardous materials from its premises in accordance with all applicable laws, before and during the supply of the Services and/or Equipment at those premises;
- (k) inform Grundfos of all health and safety rules and regulations and any other reasonable security requirements that apply at the Customer's premises;
- (l) ensure that all In-Put Materials are in good working order and suitable for the purposes for which it is used in relation to the Services;
- (m) keep all Grundfos' materials, equipment, documents and other property (Grundfos Property) at the Customer's premises in safe custody at its own risk, keep all Grundfos Property in good condition until returned to Grundfos and not dispose of or use the Grundfos Property other than in accordance with Grundfos' written instructions and authorisations; and
- (n) obtain and maintain all necessary licences and consents and comply with all relevant legislation in relation to the Services, the installation of the Equipment and the use of In-put Material in all cases before the date on which the Services are to start.
- 10.2 If Grundfos' performance of any of its obligations in respect of the Services is prevented or delayed by any act or omission by the Customer (including its agents, subcontractors, consultants or employees) or failure by the Customer to perform any relevant obligation (Customer Default):
- (a) Grundfos shall without limiting its other rights or remedies have the right to suspend performance of the Services until the Customer remedies the Customer Default, and to rely on the Customer Default to relieve it from the performance of any of its obligations under this Agreement to the extent the Customer Default prevents or delays Grundfos' performance of any of its obligations;
- (b) Grundfos shall not be liable for any costs or losses sustained or incurred by the Customer arising directly or indirectly from Grundfos' failure or delay to perform any of its obligations as set out in this condition 10.2; and
- (c) the Customer shall reimburse Grundfos on written demand for any costs or losses sustained or incurred by Grundfos arising directly or indirectly from the Customer Default.
- 10.3 The Customer shall be liable to pay to Grundfos, on demand, all reasonable costs, charges or losses sustained or incurred by Grundfos (including, without limitation, any direct, indirect or consequential losses, loss of profit and loss of reputation, loss or damage to property and those arising from injury to or death of any person and loss of opportunity to deploy resources elsewhere) arising directly or indirectly from the Customer's fraud, negligence, failure to perform or delay in the performance of any of its obligations under this Agreement, subject to Grundfos confirming such costs, charges and losses to the Customer in writing.

10.4	The Customer shall not, without the prior written consent of Grundfos, at any time from the date of this Agreement to the expiry of 12 months after the last date of supply of the Services, solicit or entice away from Grundfos or employ (or attempt to employ) any person who is, or has been, engaged as an employee of Grundfos in the provision of the Services.	
11.	The CDM Regulations	
11.1	The Customer and Grundfos agree that the Customer is to be treated for the purposes of the CDM Regulations as the Client for the purposes of the CDM Regulations.	
11.2	The Customer agrees to ensure that the Works are carried out in accordance with the CDM Regulations.	
11.3	The Customer shall ensure that the Health and Safety File is maintained correctly and is available for inspection in accordance with the CDM Regulations.	
11.4	The Customer shall indemnify and keep the Owner indemnified against liability for any breach of the Customer's obligations under or in connection with this condition 11.	
12.	Charges and Payment	
12.1	The price for the Equipment shall be the price set out in the Order or, if no price is quoted, the price set out in the published price list of Grundfos (or Grundfos as the case may be) as at the date of delivery. Unless otherwise stated in the Order, the price of the Equipment is exclusive of all costs and charges of packaging, insurance, transport of the Equipment, which shall be paid by the Customer when it pays for the Equipment.	13.2
12.2	In the case of Product Services Service contracts, Installation Works and Engineered to Order products Grundfos reserves the right to request a deposit payment and/or payment milestones. The amount or means of calculating such payment shall be set out in the Quotation.	13.3
12.3	Grundfos reserves the right to require (at its option) a parent company guarantee or a personal guarantee from the directors of the Customer at any time in relation to all outstanding amounts due to Grundfos from the Customer from time to time.	13.4
12.4	The charges for Services shall be set out in the Payment Schedule.	13.5
12.5	Unless stated otherwise all prices are given on a DAP (delivered at place) basis.	
12.6	Grundfos reserves the right to: (a) increase its standard daily fee rates for the Services. Grundfos will give the Customer reasonable notice in writing of any such increase before the proposed date of the increase. If such increase is not acceptable to the Customer, it shall notify Grundfos in writing within 14 days of the date of Grundfos' notice and either of Grundfos or the Customer shall have the right, without limiting its other rights or remedies, to terminate this Agreement by giving 14 days' written notice (or any other reasonable notice period if performance of the Order is due to commence within 14 days) to Grundfos or Customer (as applicable); and (b) increase the price of the Equipment, by giving notice to the Customer at any time before delivery, to reflect any increase in the cost of the Equipment to Grundfos that is due to: (i) any factor beyond the control of Grundfos (including foreign exchange fluctuations, increases in taxes and customs' charges and duties, and increases in labour, materials, fuel and other manufacturing costs); (ii) any request by the Customer to change the delivery date(s), quantities or types of Equipment ordered, or the Equipment specification; or (iii) any delay caused by any instructions of the Customer in respect of the Equipment or failure of the Customer to give Grundfos adequate or accurate information or instructions in respect of the Equipment.	14.
12.7	In respect of Equipment, Grundfos shall invoice the Customer on or at any time after completion of delivery. If delivery of the Equipment is made in instalments, Grundfos may invoice the Customer in instalments. In respect of Services, Grundfos shall invoice the Customer in accordance with the Payment Schedule.	14.1
12.8	The Customer shall pay each invoice submitted by Grundfos: (a) within 30 days of the date of the invoice or in accordance with any other payment terms agreed by Grundfos in writing; and (b) in full and in cleared funds to a bank account nominated in writing by Grundfos, and time for payment shall be of the essence of this Agreement.	14.2
12.9	All amounts payable by the Customer under this Agreement are exclusive of amounts in respect of value added tax chargeable from time to time (VAT). The Customer shall pay any VAT which is chargeable on the supply of the Services and/or Equipment at the same time as payment is due for the supply of the Services and/or Equipment.	15.
12.10	Grundfos may in its sole discretion elect to provide a credit facility to the Customer but is not obliged to do so. Any credit facility offered will be on written terms agreed by Grundfos and the Customer.	15.1
12.11	Without prejudice to any other right or remedy that it may have, if the Customer fails to pay Grundfos on the due date, Grundfos may: (a) charge interest on such sum from the due date for payment at an annual rate equal to the set rate of interest provided under the Late Payment of Commercial Debt (Interest) Act 1998 as varied from time to time accruing on a daily basis and being compounded quarterly until payment is made, whether before or after any judgment and the Customer shall pay the interest immediately on demand; (b) charge compensation for late payment at a set rate depending on the size of the debt in accordance with the Late Payment of Commercial Debt Regulations 2002 (SI 2002 No 1674). The minimum charge applicable is £40.00, the maximum applicable is £100.00; (c) appropriate any payment by the Customer to any outstanding invoice as Grundfos may think fit not withstanding any purported appropriation by the Customer; and (d) suspend the provision of further Services until payment has been made in full.	15.2
12.12	The Customer shall pay all amounts due under this Agreement in full without any set-off, counterclaim, deduction or withholding except as required by law. Grundfos may, without limiting its other rights or remedies, set off any amount owing to it by the Customer against any amount payable by Grundfos to the Customer.	15.3
12.13	All sums payable to Grundfos under this Agreement shall become due immediately on its termination, despite any other provision. This condition 12.10 is without prejudice to any right to claim for interest under the law, or any such right under this Agreement.	15.4
12.14	Grundfos shall have a lien on all of the Customer's property in Grundfos' possession for all sums due at any time by the Customer to Grundfos subject to Grundfos giving not less than one month's written notice to the Customer. Grundfos shall be entitled to use, sell and dispose of any such property as agent for the Customer at the Customer's expense. The proceeds of such sale shall be applied towards the payment of monies due to Grundfos and Grundfos shall be discharged of any liability in relation to such property as a result of any sale.	16.
13.	Warranty and Limitation of Liability	16.1
13.1	<i>THE CUSTOMER'S ATTENTION IS SPECIFICALLY DRAWN TO THIS CONDITION</i> Nothing in these Conditions shall limit or exclude Grundfos' liability for: (a) death or personal injury caused by its negligence, or the negligence of its employees, agents or subcontractors; (b) fraud or fraudulent misrepresentation; (c) breach of the terms implied by section 2 of the Supply of Goods and Services Act 1982 (title and quiet possession); (d) breach of the terms implied by section 12 of the Sale of Goods Act 1979 (title and quiet possession); or (e) defective products under the Consumer Protection Act 1987.	16.2
	Subject to condition 13.1: (a) Grundfos shall under no circumstances whatsoever be liable to the Customer, whether in contract, tort (including negligence), breach of statutory duty, or otherwise, for any loss of profit, turnover, data, business opportunity, anticipated savings, any indirect or consequential loss or any damage to goodwill arising under or in connection with this Agreement; (b) Grundfos' total liability to the Customer where the Customer has provided Grundfos with incorrect weights, dimensions, capacity performance or other information shall in no circumstances exceed the price of the Equipment supplied in accordance with such incorrect information; and (c) Grundfos' total liability to the Customer in respect of all other losses arising under or in connection with this Agreement, whether in contract, tort (including negligence), breach of statutory duty, or otherwise, shall in no circumstances exceed £1million.	17.
	The terms implied by sections 13 to 15 of the Sale of Goods Act 1979 and the terms implied by sections 3 to 5 of the Supply of Goods and Services Act 1982 are, to the fullest extent permitted by law, excluded from this Agreement.	17.1
	This condition 13 shall survive termination of this Agreement.	
	The Customer shall indemnify Grundfos for any costs suffered by Grundfos for claims from any third party which arise by virtue of the Customer having resold the Equipment (unless such claim arises solely from Grundfos' negligence).	
	Confidentiality and Grundfos' property	
	Each party (receiving party) shall keep in strict confidence all technical or commercial know-how, specifications, inventions, processes or initiatives which are of a confidential nature and have been disclosed to the receiving party by the other party (disclosing party), its employees, agents or subcontractors, and any other confidential information concerning the disclosing party's business, its products and services which the receiving party may obtain. The receiving party shall only disclose such confidential information to those of its employees, agents and subcontractors who need to know it for the purpose of discharging the receiving party's obligations under this Agreement, and shall ensure that such employees, agents and subcontractors comply with the obligations set out in this condition as though they were a party to this Agreement. The receiving party may also disclose such of the disclosing party's confidential information as is required to be disclosed by law, any governmental or regulatory authority or by a court of competent jurisdiction. Neither party shall use the other's confidential information for any purpose other than to perform its obligations under this Agreement.	
	Intellectual Property Rights	
	(Subject to condition 15.2) all Intellectual Property Rights in or arising out of or in connection with: (a) the Equipment; (b) the Services; or (c) any manuals or documentation given by Grundfos to the Customer, shall be owned by Grundfos and nothing in this agreement shall transfer or assign any such Intellectual Property Rights to the Customer.	
	The Customer acknowledges that, in respect of any third party Intellectual Property Rights, the Customer's use of any such Intellectual Property Rights is conditional on Grundfos first obtaining a written licence from the relevant licensor on such terms as will entitle Grundfos to license such rights to the Customer.	
	The Customer grants to Grundfos a fully paid up, non-exclusive, royalty free, non-transferable licence to copy and modify any In-put Material for the purpose of providing the Services to the Customer.	
	The Customer shall indemnify Grundfos against all liabilities, costs, expenses, damages and losses (including any direct, indirect or consequential losses, loss of profit, loss of reputation and all interest, penalties and legal costs (on a full indemnity basis) and all other reasonable professional costs and expenses) suffered or incurred by Grundfos for actual or alleged infringement of a third party's Intellectual Property Rights arising out of or in connection with Grundfos' use of the Equipment Specification.	
	Data protection	
	Both parties will comply with all applicable requirements of the Data Protection Legislation. This condition 16 is in addition to, and does not relieve, remove or replace, a party's obligations under the Data Protection Legislation. In this condition 16 Applicable Laws means (for so long as and to the extent that they apply to the Supplier) the law of the European Union, the law of any member state of the European Union and/or Domestic UK Law; and Domestic UK Law means any Data Protection Legislation from time to time in force in the UK including the Data Protection Act 2018 or any successor legislation.	
	Without prejudice to the generality of condition 16.1 each party shall, in relation to any Personal Data processed in connection with the performance by that party of its obligations under the Agreement: (a) ensure that it has in place appropriate technical and organisational measures to protect against unauthorised or unlawful processing of Personal Data and against accidental loss or destruction of, or damage to, Personal Data, appropriate to the harm that might result from the unauthorised or unlawful processing or accidental loss, destruction or damage and the nature of the data to be protected, having regard to the state of technological development and the cost of implementing any measures (those measures may include, where appropriate, pseudonymising and encrypting Personal Data, ensuring confidentiality, integrity, availability and resilience of its systems and services, ensuring that availability of and access to Personal Data can be restored in a timely manner after an incident, and regularly assessing and evaluating the effectiveness of the technical and organisational measures adopted by it); (b) assist the other party, at the other party's cost, in responding to any request from a Data Subject and in ensuring compliance with its obligations under the Data Protection Legislation with respect to security, breach notifications, impact assessments and consultations with supervisory authorities or regulators; (c) notify the Customer without undue delay on becoming aware of a Personal Data breach; (d) at the written direction of the other party, delete or return Personal Data and copies thereof to the other party on termination of the agreement unless required by Applicable Law to store the Personal Data; and (e) maintain complete and accurate records and information to demonstrate its compliance with this condition 16.	
	Neither party consents to the other appointing any third-party processor of Personal Data under the Contract.	
	Termination	
	Without limiting its other rights or remedies, Grundfos or Customer may terminate this Agreement with immediate effect by giving written notice to the other party if: (a) the other party commits a material breach of its obligations under this Agreement and (if such breach is remediable) fails to remedy that breach within 7 days after receipt of written notice to do so;	

- (b) the other party takes any step or action in connection with its entering administration, provisional liquidation or any composition or arrangement with its creditors (other than in relation to a solvent restructuring), being wound up (whether voluntarily or by order of the court, unless for the purpose of a solvent restructuring), having a receiver appointed to any of its assets or ceasing to carry on business [or, if the step or action is taken in another jurisdiction, in connection with any analogous procedure in the relevant jurisdiction];
- (c) the other party suspends, or threatens to suspend, or ceases or threatens to cease to carry on all or a substantial part of its business; or
- (d) the other party's financial position deteriorates to such an extent that in the terminating party's opinion the other party's capability to adequately fulfil its obligations under the Contract has been placed in jeopardy.
- 17.2 Without limiting its other rights or remedies, Grundfos may terminate this Agreement with immediate effect by giving written notice to the Customer if:
- (a) there is a change of control of the Customer (as defined in section 574 of the Capital Allowances Act 2001);
- (b) the Customer is unable or unwilling to procure any guarantee required by Grundfos in accordance with condition 12.3; or
- (c) the Customer's financial position deteriorates to such an extent that in Grundfos' opinion the Customer's capability to adequately fulfil its obligations under the Contract has been placed in jeopardy or Customer fails to pay any amount due under this Agreement on the due date for payment.
- 17.3 Without limiting its other rights or remedies, Grundfos may suspend the supply of Services or all further deliveries of Equipment under this Agreement or any other agreement between the Customer and Grundfos if the Customer becomes subject to an Event of Default, or Grundfos reasonably believes that the Customer is about to become subject to any of them.
- 17.4 On termination of this Agreement for any reason:
- (a) the Customer shall immediately pay to Grundfos all of Grundfos' outstanding unpaid invoices and interest and, in respect of Services supplied but for which no invoice has yet been submitted, Grundfos shall submit an invoice, which shall be payable by the Customer immediately on receipt;
- (b) the Customer shall return all of Grundfos' materials and any deliverables which have not been fully paid for and which have not been installed as part of a bigger system. If the Customer fails to do so, then Grundfos may enter the Customer's premises and take possession of them. Until they have been returned, the Customer shall be solely responsible for their safe keeping and will not use them for any purpose not connected with this Agreement;
- (c) the accrued rights and remedies of the parties as at termination shall not be affected, including the right to claim damages in respect of any breach of this Agreement which existed at or before the date of termination or expiry;
- (d) conditions which expressly or by implication have effect after termination shall continue in full force and effect; and
- (e) Grundfos shall have a lien over all of the Customer's property in Grundfos' possession in respect of all sums due at any time from the Customer to Grundfos. Provided that Grundfos gives at least 14 days' prior written notice, Grundfos shall be entitled to use, sell and dispose of such property as agent for and at the expense of the Customer and apply the proceeds towards the payment of monies due and outstanding from the Customer to Grundfos. Thereafter, Grundfos shall be discharged of any liability in respect of the Customer's property.
- 17.5 On termination of this Agreement (however arising), any of these Conditions that expressly or by implication is intended to have effect after termination (or expiry) shall survive and continue in full force and effect.
18. **Force majeure**
Grundfos shall have no liability to the Customer under this Agreement if it is prevented from, or delayed in performing, its obligations under this Agreement or from carrying on its business by any Force Majeure Event.
19. **Variation**
Except as provided in these Conditions, no variation of this Agreement or these Conditions or of any of the documents referred to in them shall be valid unless it is in writing and signed by or on behalf of each of the authorised representatives of the parties.
20. **Waiver**
20.1 A waiver of any right under this Agreement is only effective if it is in writing and it applies only to the circumstances for which it is given. No failure or delay by a party in exercising any right or remedy under this Agreement or by law shall constitute a waiver of that (or any other) right or remedy, nor preclude or restrict its further exercise. No single or partial exercise of such right or remedy shall preclude or restrict the further exercise of that (or any other) right or remedy.
- 20.2 Unless specifically provided otherwise, rights arising under this Agreement are cumulative and do not exclude rights provided by law.
21. **Severance**
21.1 If any provision of this Agreement (or part of any provision) is found by any court or other authority of competent jurisdiction to be invalid, illegal or unenforceable, that provision or part-provision shall, to the extent required, be deemed not to form part of this Agreement, and the validity and enforceability of the other provisions of this Agreement shall not be affected.
- 21.2 If a provision of this Agreement (or part of any provision) is found illegal, invalid or unenforceable, the provision shall apply with the minimum modification necessary to make it legal, valid and enforceable.
22. **Entire agreement**
22.1 This Agreement constitutes the whole agreement between the parties and supersedes all previous agreements between the parties relating to its subject matter.
- 22.2 Each party acknowledges that, in entering into this Agreement, it has not relied on, and shall have no right or remedy in respect of, any statement, representation, assurance or warranty (whether made negligently or innocently) (other than for breach of contract), as expressly provided in this Agreement.
- 22.3 Nothing in this condition shall limit or exclude any liability for fraud.
23. **Assignment**
23.1 The Customer shall not, without the prior written consent of Grundfos, assign, transfer, charge, mortgage, subcontract or deal in any other manner with all or any of its rights or obligations under this Agreement.
- 23.2 Grundfos may at any time assign, transfer, charge, mortgage, subcontract or deal in any other manner with all or any of its rights under this Agreement and may subcontract or delegate in any manner any or all of its obligations under this Agreement to any third party or agent.
- 23.3 Each party that has rights under this Agreement is acting on its own behalf and not for the benefit of another person.
24. **No partnership or agency**
Nothing in this Agreement is intended to, or shall be deemed to, constitute a partnership or joint venture of any kind between any of the parties, nor constitute any party the agent of another party for any purpose. No party shall have authority to act as agent for, or to bind, the other party in any way.
25. **Rights of third parties**
A person who is not a party to this Agreement shall not have any rights under or in connection with it.
26. **Notices**
26.1 Any notice required to be given under this Agreement shall be in writing and shall be delivered personally, or sent by pre-paid first-class post, recorded delivery or by commercial courier to the registered office or the address stated in the Order (or as otherwise notified to the other party in writing).
- 26.2 Any notice shall be deemed to have been duly received if delivered personally, when left at the correct address or, if sent by pre-paid first-class post or recorded delivery, at 9.00am on the second Business Day after posting, or if delivered by commercial courier, on the date and at the time that the courier's delivery receipt is signed.
- 26.3 This condition 26 shall not apply to the service of any proceedings or other documents in any legal action.
- 26.4 A notice required to be given under this Agreement shall also be validly served if sent by e-mail.
27. **Governing law and jurisdiction**
27.1 This Agreement, and any dispute or claim arising out of or in connection with it or its subject matter or formation (including non-contractual disputes or claims), shall be governed by, and construed in accordance with, the law of England and Wales.
- 27.2 The parties irrevocably agree that the courts of England and Wales shall have exclusive jurisdiction to settle any dispute or claim that arises out of, or in connection with, this Agreement or its subject matter or formation (including non-contractual disputes or claims).

GRUNDFOS PUMPS LTD.
Grovebury Road
Leighton Buzzard
Beds LU7 4TL

Tel: 01525 850000
Email: grundfos-uk@sales.grundfos.com

www.grundfos.co.uk

