

# Grundfos Pump Repair Kits

## Price List June 2022

### Category 4A



#### PRODUCTS INCLUDED:

UPE/MAGNA  
SOLOLIFT+/SOLOLIFT2  
UNILIFT  
MQ/JP/SCALA2  
CM/CH  
CR  
TP/NB/NK  
SP  
MG/MGE



## PLEASE NOTE THE FOLLOWING FROM OUR TERMS AND CONDITIONS OF SALE:

**A copy of our full terms and conditions are available at the back of this price list & all prices are delivered at place (DAP) and subject to VAT at the standard rate.**

### MINIMUM ORDER VALUE

Our minimum order value is **£55.00 NET**. Orders between the minimum order value and the low order threshold of **£335.00 NET** for pumps or **£130.00 NET** for Category 4, S1,S2,S3,S4 items will be subject to a **£37.00 NET** handling fee.

### EXPRESS DELIVERY OPTIONS;

#### INTERSPEED (PER ITEM) (above 150 Kgs – subject to transport availability and additional cost)

- CR(I)(E), CRN(E) Vertical Multistage
- Non-stock SP/SPA models (with or without drop cable cut in 5 metre increments. Please note; resin cable joint will take 24 hours to set)
- Order must be received electronically by **10.45am** – despatch same day, **delivery by Express Carrier Service** – UK (\*note restrictions apply)  
**£120.00 NET (PER ITEM)**

#### BOXSPEED (PER ITEM) – (above 100 Kgs – subject to transport availability and additional cost)

- ALPHA, UPS, UPN, UPS3/UPM Circulators
- Magna (D) Glandless Circulators
- UP/UPS/Magna Replacement Heads/Terminal boxes
- TPE(D), NB(E) Glanded
- CM, CME Horizontal Multistage
- JP, MQ and Tanks/Vessels (up to 500 Litre)
- CMB(E), Boosters, Scala
- AP, KP, CC, SL1, SLV, Unilift, Sololift
- SQ, SQE, SB(A), SP2A, 3A & 5A >1.5kW (Excluding pumps with cable fitted as well as SP longer than 2.4 metres)
- Motors, Flanges & Unions, Pump Components, Chamber Stacks
- Order must be received electronically before **13:30pm** – despatch same day, **delivery by Express Carrier Service** – UK (\*note restrictions apply)  
**FIRST ITEM - £90.00 NET & ADDITIONAL ITEMS £40.00 EACH (PER ORDER)**

#### SPARESPEED (PER ITEM)

- Only applies to spares kits, (not chamber stacks, components, pump heads or terminal boxes)
- Order must be received electronically before **13:30pm** – despatch same day, **delivery by Express Carrier Service** – UK (\*note restrictions apply)  
**FIRST ITEM - £75.00 NET & ADDITIONAL ITEMS £35.00 EACH (PER ORDER)**

\* Express Carrier Service ONLY guaranteed if placed on time via Extranet/EDI. Deliveries to the Highlands, certain mainland post codes and offshore UK may take an extra day. All services are dependent on component and product availability. Grundfos can guarantee despatch or availability for collection same day but cannot guarantee delivery. Grundfos cannot accept any cancellations or amendments once the goods have been despatched. Cancellations are subject to the Product Returns Fee below. **BREXIT - Express delivery cut off times for deliveries into the UK from an EU have changed from 1:30PM to 10:00AM & all deliveries to Northern Ireland will all be despatched from our DC in Sunderland only.**

### SPARES STANDARD DELIVERY CHARGE

- A **£30.00 NET** handling fee will be applied, per order, to all orders for spares, pump components, spares kits.
- This charge does NOT apply if **SPARESPEED**, express service or our online ordering system (EDI), and/or Extranet are used for order placement.

### PRODUCT RETURNS FEE

- On receipt of written agreement from Grundfos, items can be returned and will be subject to a minimum **35%** restocking fee. Goods must be returned in their original packaging and within **6 months of date of despatch**. All returns will be subject to inspection, to ascertain age, condition and product type and can incur an increased restocking charge. Please contact [grundfos-uk@sales.grundfos.com](mailto:grundfos-uk@sales.grundfos.com) with the original purchase order, to arrange collection. Do not send items to Grundfos as they will be refused delivery, collection will be arranged.

#### Exclusions to Product Returns apply;

- Items with a NET value of £150.00 or less (per item).
- All Service kits, cable including attached to pump, assembled/engineered to order product and obsolete/phased out product cannot be returned.

### STORAGE CHARGE

- There will be a **2%** storage charge of the item invoice value, payable per month, commencing one month from the date the goods were available for delivery from Grundfos.

### WARRANTY PERIOD

- Grundfos pumps are warranted for 24 months from installation or 30 months from manufacture; whichever is the sooner.
- There is a five-year warranty that covers manufacturing or material defects on domestic heating circulators: UPS3 15-50/65, UPS2 15-50/60, ALPHA models, Amazon & Amazon Universal shower pumps. From 1<sup>st</sup> March 2017 SCALA2 booster pumps when used in domestic applications were included.
- From 1<sup>st</sup> February 2020 there is a 5 year guarantee scheme Grundfos Go Guarantee, available on all MAGNA3, TPE, NBE and NKE models (conditions apply).

### SERVICE AND COMMISSIONING

Grundfos offers a wide range of service, repair and commissioning options. Please contact Service on 01525 850000 or email [service-uk@sales.grundfos.com](mailto:service-uk@sales.grundfos.com)

### ORDER TRACKING AND PROOF OF DELIVERY

- Order status and Proof of Delivery can be obtained via Grundfos Extranet or MyGrundfos online portals.
- For extranet access contact [grundfos-uk@sales.grundfos.com](mailto:grundfos-uk@sales.grundfos.com). Self-registration for MyGrundfos can be found here; <https://uk.grundfos.com/mygrundfos>

# INDEX

	Page
UPC / UMC / UPS Series 100 / UPS Series 200 / ALPHA	4
UPS Series 200	5
UPE / MAGNA	6
MAGNA1 / MAGNA3	7
SOLOLIFT+	8
SOLOLIFT2	9
APG, UNILIFT CC / KP / AP	10
MQ, JP, SCALA2	11
CH, CHI, CHIE	12
CM, CME, CM-SP, CMBE, CH and JP BOOSTER	13
CP, CPK	14
CR, CRI, CRN 1, 3, & 5 CR, CRN 2 & 4	15
CR, CRI, CRN 10, 15 & 20 CR, CRN 8 & 16	16
CR, CRN 30 & 60	17
CR, CRN 32, 45, 64, 90,95, 120, 125, 150 & 155	18
CRT	24
CRK, SPK	26
MTH, MTR	27
CLM / CLP / CDM / CDP / NM / NP / LM / LP / LMD / LPD	29
UMT / UPT / UMTD / UPTD	30
TP	31
NB / NK	34
SP	39
SUBMERSIBLE MOTOR CABLES / SQ, SQE	43
BOOSTER SETS	44
MG/MGE motors	45

## UMC, UPC, UPS Series 100, ALPHA

### UMC/UPC

Pump heads

UMC/UPC pump heads 1ph and 3ph are obsolete  
Please contact [grundfos-uk@sales.grundfos.com](mailto:grundfos-uk@sales.grundfos.com) for alternative pump

		240V 1ph 50Hz			415V 3ph 50Hz	
		Capacitor	£	Product Code	£	Product Code
Terminal boxes	UPC 40-60	6 µF	547	96405853	534	96404870
	UPC 40-120	10 µF	547	96405855	534	96404870
	UMC 50-60	14 µF	547	96405857	534	96404870
	UPC 50-120	20 µF	547	96405859	534	96404870
	UMC 65-60	20 µF	547	96405859	534	96404870
	UPC 65-120	25 µF	547	96405860	534	96404870
	UMC 80-60				534	96404870
	UPC 80-120				534	96404870
	UMC 100-60				534	96404870

All above codes are obsolete and only available while stocks last.

### UPS - Series 100

		£	Product Code
Pump heads	UPS 40-50		
	UPS 40-80		
UPS 40-50 and UPS 40-80 single phase pump heads are obsolete Please contact <a href="mailto:grundfos-uk@sales.grundfos.com">grundfos-uk@sales.grundfos.com</a> for alternative pump			
Pump heads*	UP 40-50 F	OBSELETE	52992095
Terminal box*	UP 40-50 F	21	98730796

\* Product obsolete. Once stock is depleted, please contact [grundfos-uk@sales.grundfos.com](mailto:grundfos-uk@sales.grundfos.com)

### UPS - Series 200

		£	Product Code
Flap valve with guide pin for twin head pumps	UPS 32	67	96407253
	UPS 40	68	96407254
	UPS 50	143	96407255
	UPS 65	73	96407256
	UPS 80	75	96407257
	UPS 100	157	96407258

### ACCESSORIES

		£	Product Code
Tee key	4mm	39	00SV0181
	5mm	39	00SV0124
	6mm	33	00SV0050
	8mm	63	00SV0051
COMFORT UP(S) PM plug		25	98685259
Alpha Plug (straight)	ALPHA Pro, ALPHA+	38	595562
	ALPHA2 (L), ALPHA3, MAGNA1, MAGNA3	25	98284561
Body O'Ring Kit		44	96406940
Gasket D44/D32x2		27	99200010
Red Spray Paint		OBSELETE	96485340
Flow Switch		42	595406

Circulator Washers (520046)		Pack of 50	27	99200010
Air vent screw 1/4"BSP		Pack of 5	82	96548464
UPS3 Plug		UPS3	44	99439948
UPS2 Plug		UPS2	25	98284561



ALPHA plug

## UPS / UPSD - Series 200

### UPS Series 200 replacement pump heads

	240V 1ph 50Hz		415V 3ph 50Hz	
	£	Product Code	£	Product Code
UPS 32-30/4	1,084	96405977	1,084	96405979
UPS 32-60/2	1,084	96405980	1,084	96405984
UPS 32-120/2	1,084	96405985	1,084	96405987
UPS 40-30/4	1,084	96405988	1,084	96405990
UPS 40-60/2	1,084	96405994	1,084	96405996
UPS 40-60/4	1,262	96405991	1,262	96405993
UPS 40-120/2	1,084	96405997	1,084	96405999
UPS 40-180/2	1,262	96406000	1,262	96406001
UPS 40-185/2	1,262	96432239	1,262	96432238
UPS 50-30/4	1,084	96406002	1,084	96406004
UPS 50-60/2	1,084	96406009	1,084	96406013
UPS 50-60/4	1,262	96406005	1,262	96406008
UPS 50-120/2	1,262	96406015	1,262	96406017
UPS 50-180/2	1,262	96406018	1,262	96406019
UPS 65-30/4	1,084	96406020	1,084	96406022
UPS 65-60/2	1,084	96406026	1,084	96406028
UPS 65-60/4	1,262	96406023	1,262	96406025
UPS 65-120/2	1,262	96406029	1,262	96406031
UPS 65-180/2			1,262	96406032
UPS 80-30/4			1,262	96406034
UPS 80-60/4			1,262	96406036
UPS 80-120/2			1,262	96406038
UPS 100-30/4			1,262	96406040

\* UPS circulator pumps with metal ID plate obsolete - no spares

\* Pump with FO6 on name plate obsolete - no spares

### UPS Series 200 replacement terminal boxes

	240V 1ph 50Hz			415V 3ph 50Hz	
	Capacitor	£	Product Code	£	Product Code
UPS 32-30/4	4 µF	547	96405852	534	96404870
UPS 32-60/2	6 µF	547	96405853	534	96404870
UPS 32-120/2	10 µF	547	96405855	534	96404870
UPS 40-30/4	6 µF	547	96405853	534	96404870
UPS 40-60/2	8 µF	547	96405854	534	96404870
UPS 40-60/4	10 µF	547	96405855	534	96404870
UPS 40-120/2	12 µF	547	96405856	534	96404870
UPS 40-180/2	25 µF	547	96405860	534	96404870
UPS 40-185/2	25 µF	547	96405860	534	96404870
UPS 50-30/4	6 µF	547	96405853	534	96404870
UPS 50-60/2	10 µF	547	96405855	534	96404870
UPS 50-60/4	20 µF	547	96405859	534	96404870
UPS 50-120/2	25 µF	547	96405860	534	96404870
UPS 50-180/2	30 µF	547	96405861	534	96404870
UPS 65-30/4	8 µF	547	96405854	534	96404870
UPS 65-60/2	16 µF	547	96405858	534	96404870
UPS 65-60/4	20 µF	547	96405859	534	96404870
UPS 65-120/2	30 µF	547	96405861	534	96404870



UPSD 50-120 F

## UPE(D), MAGNA UPE(D)

### UPE UPED Replacement 3 phase heads and terminal boxes

Pump head

Terminal box

Pump heads and terminal boxes are obsolete

Please contact grundfos-uk@sales.grundfos.com for alternative pump

### UPE(D) - SINGLE PHASE TERMINAL BOXES (model E)\*

	£	Product Code
UPE 32-120 (F)(N)	2,077	96513647
UPE(D) 40-100 (F)	1,275	97752743
UPE(D) 40-120 (F)(N)	2,077	96513647
UPE(D) 50-60 (F)(N)	2,077	96513647
UPE 50-100 (F)	1,275	97752743
UPE(D) 50-120 (F)(N)	3,380	96500020
UPE(D) 65-60 (F)(N)	2,077	96513647
UPE(D) 65-120(F)(N)	3,380	96500020
UPE(D) 80-120 FZ	OBSOLETE	97529279

MAGNA 25/32/40/50-40/60/80/100

1,275

97752743

\* Product obsolete. Once stock is depleted, please contact grundfos-uk@sales.grundfos.com

### UPE(D) - SINGLE PHASE PUMP HEADS (model E)\*

	£	Product Code
UPE 32-120 (F)(FN)	OBSOLETE	96513648
UPE 40-100(F)(F(D))	OBSOLETE	96281051
UPE 40-120(F)(FN)(F(D))	OBSOLETE	96513649
UPE 50-60(F)(FN)(F(D))	OBSOLETE	96513660
UPE 50-100(F)	OBSOLETE	96281052
UPE 50-120(F)(F(D))(FN)	OBSOLETE	96499918
UPE 65-60(F)(FN)(F(D))	OBSOLETE	96513661
UPE 65-120(F)(FN)(D)	OBSOLETE	96499919

UPE25-60

OBSOLETE

96281047

UPE25-100

OBSOLETE

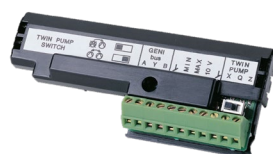
96281049

\* Product obsolete. Once stock is depleted, please contact grundfos-uk@sales.grundfos.com

### UPE (D)

	£	Product Code
Geni Module *	269	605945
LON Module	OBSOLETE	98179044

\* Product obsolete. Only available while stocks last.



UPE GENI module

### MAGNA (D)

	£	Product Code
Geni Module *	Magna 4/6/8/10 m	OBSOLETE
		96236335

\* Product obsolete. Once stock is depleted, please contact grundfos-uk@sales.grundfos.com



Magna add-on module



Magna terminal box

Please advise pump PN and contact Grundfos direct to ensure correct generation of spare quoted  
Above items are under our phase out program - please call to check stock once stock sold parts are obsolete



## MAGNA1, MAGNA1 D, MAGNA3, MAGNA3 D

### MAGNA1, MAGNA1 D

	£	Product Code
ALPHA plug (Straight)	25	98284561
Kit, O-ring D68x4.35	15	98357755
Control box cover	141	98988010
Insulation shell DN25/D32 180	59	98615808
Insulation shell DN32-100 F 220	76	98615809
Insulation shell DN40-60 F 220	80	98615810

### HEADS AND TERMINAL BOXES

PLEASE CONTACT GRUNDFOS WITH PUMPS QUOTING PN NUMBER FROM YOUR NAMEPLATE

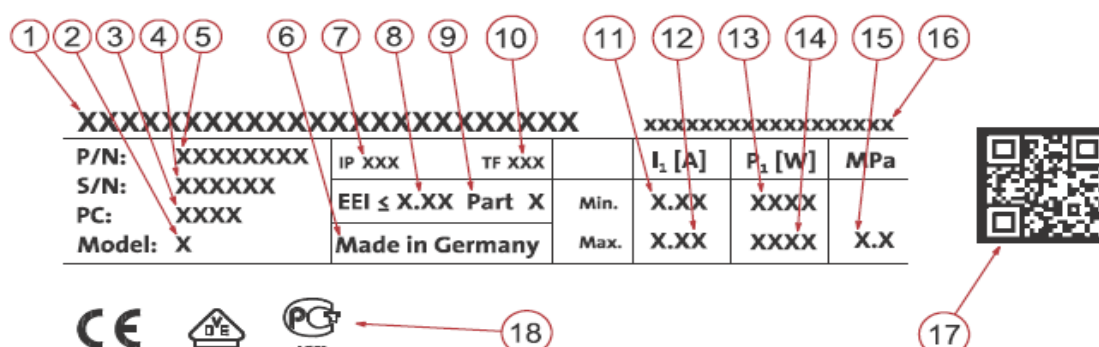
### MAGNA3, MAGNA3 D

	£	Product Code
ALPHA plug (Straight)	25	98284561
Kit, Sensor DPS	128	99313067
Kit, sensor cable	624	99313072
Control box cover front end	item 164	OBSOLETE
Connector plugs for Magna 1 & 3	138	98357861

### HEADS AND TERMINAL BOXES

PLEASE CONTACT GRUNDFOS WITH PUMPS QUOTING PN NUMBER FROM YOUR NAMEPLATE

The pump nameplate provides the following information:



Part 164

**SOLOLIFT+****SOLOLIFT+ WC, WC-1 & WC-3**

	£	Product Code
Hoses	446	96553016
Microswitch	184	96575698
Top cover	300	96553041
Wear parts	112	96553045
Spare box	446	96553054

**SOLOLIFT+ CWC-3**

	£	Product Code
Hoses	292	96553017
Microswitch	184	96575699
Top cover	283	96553042
Wear parts	129	96553046
Spare box	OBSOLETE	96553056

**SOLOLIFT+ C-3**

	£	Product Code
Hoses	292	96553017
Microswitch	184	96575710
Top cover	283	96553042
Wear parts	129	96553046
Spare box	OBSOLETE	96553057

**SOLOLIFT+ D-3**

	£	Product Code
Hoses	OBSOLETE	96553018
Microswitch	184	96575711
Top cover	OBSOLETE	96553043
Wear parts	47	96553047

**SOLOLIFT+ range**



## SOLOLIFT2

### SOLOLIFT2 WC-1 & WC-3

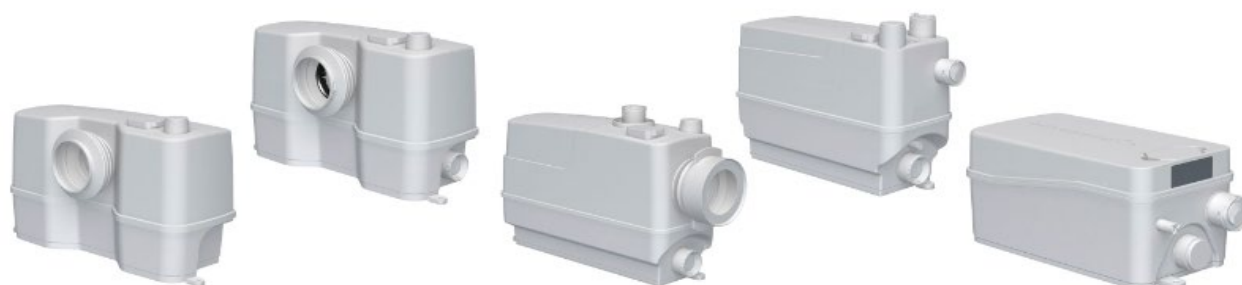
	£	Product Code
Discharge connector	52	98103367
Pressure switch	120	97775344
Capacitor	44	97775374
Carbon Filter, bulk	pack 5	35
Gasket for toilet connection (pan connector)	83	97775368
Non-return valve for outlet	30	97775371
Impeller	44	97775350
Inlet adapter	48	97775378
Blanking plug	(item C in instruction book)	44
WC-1 accessory kit	(supplied with unit)	160
WC-3 accessory kit	(supplied with unit)	121

### SOLOLIFT2 CWC-3

	£	Product Code
Pressure switch	120	97775344
Capacitor	44	97775374
Carbon Filter, bulk	pack 5	35
Gasket for toilet connection (pan connector)	84	97775369
Non-return valve for outlet	30	97775371
Impeller	44	97775350
Inlet adapter	48	97775378
Blanking cover	(item C in instruction book)	44
Rubber parts	(item B in instruction book)	68
CWC -3 accessory kit	(supplied with unit)	132

### SOLOLIFT2 C-3 & D-2

	£	Product Code
Capacitor	25	97775375
Carbon Filter, bulk	pack 5	35
C-3 discharge Connector	31	98103364
C-3 impeller	41	97775352
D-2 impeller	39	97775354
C-3 Float switch kit	112	97775346
Non Return Valve for outlet	30	97775371
D-2 pressure switch kit	111	97775347
C-3 assessor kit	(supplied with unit)	150
D-2 accessory kit	(supplied with unit)	123



SOLOLIFT2 range

## PUMP REPAIR KITS

### UNILIFT CC

		£	Product Code
Impeller kit	Unilift CC5	39	96578967
	Unilift CC7	46	96578968
	Unilift CC9	50	96578969
Float switch	all models	75	96578970
	Unilift CC5	149	96578973
Motor kit	Unilift CC7	185	96578974
	Unilift CC9	241	96578975
O-ring kit	all models	23	98561387
Strainer	all models	55	96578990
Rubber flap valve	all models	27	97825322
Rubber flap valve (pack of 10)	all models	55	96578978

### UNILIFT KP

		£	Product Code
Cable socket spanner		237	10757
Impeller kit	Unilift KP150	75	15778
	Unilift KP250	78	15779
Motor cable with float switch 10m	Unilift KP150, KP250 & KP350	189	16723
Motor cable with float switch 5m	Unilift KP150, KP250 & KP350	171	16724
Motor Cable without float switch 5m	Unilift KP150, KP250 & KP350	144	16725
Motor Cable without float switch 10m	Unilift KP150, KP250 & KP350	152	16726
Motor Cable with <b>vertical</b> float switch 5m	Unilift KP150 & KP250	204	16739
Non-return valve (single)		27	97825322
Non-return valve (pack of 10)		55	96578978

### UNILIFT AP

			£	Product Code
Shaft seal	Unilift AP12, 35 & 50	NBR	282	96427804
	Unilift AP12, 35 & 50	FKM (Viton)	301	96426650
Float Switch 0.7m	Unilift AP12		147	96548101

### UNILIFT AP B

			£	Product Code
Shaft seal	Unilift AP35B & 50B	NBR (standard)	249	96429307
	Unilift AP35B & 50B	FKM (Viton)	268	96429308
Cable entry repair kit	Automatic		158	96429309
	Manual		158	96429310

### APG

		MODEL A		MODEL B	
50 Hz		£	Product Code	£	Product Code
	APG 50.09 / APG 50.11	414	96003308	705	96007169
	APG 50.09.Ex / APG 50.11.Ex	972	96003696	1,815	96007178
	APG 50.17 / APG 50.18 / APG 50.19	650	96003309	1,151	96007170
Wear parts kit	APG 50.19.3 Ex AND APG 50.31.3 Ex	874	96003310	1,370	96007171
	APG 50.31	881	96003311	885	96007172
	APG 50.48.3.Ex / APG 50.65.3.Ex / APG50.92.3.Ex			1,518	96005498
	APG 50.48.3.Ex / APG 50.65.3.Ex / APG50.92.3.Ex *			OBSOLETE	96005499

\* Pump with moisture switch



Unilift AP float switch



Unilift CC discharge and non-return valve

## MQ, JP, SCALA2

### MQ

		£	Product Code
Shaft seal kit		156	96450696
O-ring kit		166	96526628
Hydraulic kit	50Hz models only	383	96525909
Fittings kit with non-return valve	G 1"	115	96577720
Fittings kit with non-return valve	NPT 1"	97	96634763
Pressure switch	MQ 3-35	129	96526653
Pressure switch	MQ 3-45	163	98652420
End-cover		OBSOLETE	96488398
Clamp		158	96450697
Flow sensor		135	96450698
Terminal box connection		OBSOLETE	96488399
Tank		263	98893507
Internal non-return valve		87	96526663
Electronic parts kit	230V 50Hz	302	96525934
Capacitor	12.5 µF	50	96590742
Drain plug		68	96457923

### JP4

		£	Product Code
Bulk, pipe plug		33	99521030
Kit, hydraulic parts		153	98715217
Kit, lifting handle		33	99521000
Kit, motor cover		54	99521025
Kit, O-rings		22	99577668
Kit, pump housing		236	99521027
Kit, shaft seal		56	99520998
Spare, capacitor		22	99521052
Spare, motor fan cover		18	99577666

### JP5

		£	Product Code
Shaft seal kit	model D	51	96768182
Shaft seal & gasket kit	model C	119	985742
Gasket kit	model B, D, E	57	96768180
Hydraulic parts/ejector	model B, D, E	204	96768184

### JP6

		£	Product Code
Shaft seal kit	model D	51	96768182
Shaft seal & gasket kit	model C	119	985743
Gasket kit	model B, D, E	57	96768180
Hydraulic parts/ejector	model B, D, E	203	96768185

### SCALA2

		£	Product Code
Shaft seal		82	99016024
O-rings		63	99016019
Drain plug, bulk	(10 pc)	72	99016065
O-ring for drain plug, bulk	(10 pc)	19	99016066
Drain plug and non-return valves		36	99016030
Chamber stack		108	99016032
Connection module		93	99016047
Cover for hydraulic		54	99016053
Cover complete		215	99016058
Fitting R1 and union, composite		35	99016013
Fitting NPT1 and union, composite		35	99016015
Pressure tank		137	99016027

**CH, CHI, JP****CH(N) 2 & 4**

			£	Product Code
Shaft seal kit		CVBE/V	109	985164
		AQQE/V	220	96586305
		RUUE/V	178	985737
		AUUE/V	181	985848
Wear parts kit	CH 2	2-5 stages	120	435002
		6 stages	245	435039
	CH 4	2-4 stages	108	445004
		5-6 stages	259	445017

**CH 8 & 12 - Model A & B**

			£	Product Code
Shaft seal kit		CVBE/V	132	004N5012
		CVBE/V with neck rings	172	004N5013
		AQQE/V	215	96586306
		RUUE/V	192	96416348
Wear parts kit		CH 8-20/25/30	382	96604263
		CH 8-40/50/60	693	96604265
		CH 12-10/20/25/30	312	96604268
		CH 12-40/50/60	638	96604270

**CHI(E) 2 & 4**

			£	Product Code
Wear parts and shaft seal kit		BUBE / EPDM	355	004H5009
		BUBV / FKM	461	004H5010
		BQQE / EPDM	364	004H5007
		BQQV / FKM	309	004H5008

**CHI(E) 8, 10 & 12**

			£	Product Code
Wear parts and shaft seal kit		BQQE	438	004F5012
		BQQV	345	004F5013

**CHI 15 & 20**

			£	Product Code
Shaft seal kit		BQQE	369	96649924
		BQQV	371	96649925
Wear parts and shaft seal kit		BQQE	500	96293521
		BQQV	510	96293537

**CH****CHI**

**CM / CME****CM / CME - A version (cast iron and 304 stainless steel wet components)**

			£	Product Code
Gasket & seal kit	CM 1, 3 & 5	AVBE/V	146	96932350
	CM 1, 3 & 5	AQQE/V	193	96932392
Gasket & seal kit	CM 10, 15 & 25	AVBE/V	172	96932393
	CM 10, 15 & 25	AQQE/V	223	96932394

**CM / CME - I / G versions (304/316 stainless steel wet components)**

			£	Product Code
Gasket & seal kit	CM 1, 3 & 5	AVBE/V	154	96932438
	CM 1, 3 & 5	AQQE/V	204	96932440
	CM 1, 3 & 5	AQKQ	1,222	96932441
Gasket & seal kit	CM 10, 15 & 25	AVBE/V	166	96932443
	CM 10, 15 & 25	AQQE/V	225	96932445
	CM 10, 15 & 25	AQKQ	2,004	96932446

**CM / CME - all models**

			£	Product Code
Drain/ fill plug kit		EPDM & FKM	86	96932395
		FFKM	104	96932396
Neck ring		CM 1, 3 & 5	88	96932397
		CM 1, 3 & 5 (low temperature)	146	96932447
		CM 10, 15 & 25	91	96932398
		CM 10, 15 & 25 (low temperature)	158	96932448
Motor bearing		MG(E) 71/80	141	96932399
		MG(E) 90	158	96932400
		MG(E) 100	169	96932412
		MG(E) 112	174	96932413
		MG(E) 132	204	96932414
			£	Product Code
Air separator chamber		CM-SP all models	81	98520101
Empty chamber 27mm		CM-SP all models	46	98520102
Empty chamber 18mm		CM-SP all models	42	98520103
Spacing pipe 13mm		CM-SP all models	39	98520104
Spare sleeve kit		CM-SP 1/3/5-3/4	219	98470942
Spare sleeve kit		CM-SP 1/3/5-5/6	252	98470943
Spare sleeve kit		CM-SP 5-7	279	98470949
Valve kit		CM-SP 4 meters	112	98519018
Valve kit		CM-SP 8 meters	116	98519013

**CME Booster (CMBE)**

		£	Product Code
Manometer	0-16 bar	189	98906914
Non return valve	1"	104	98906916
Non return valve	1" 1/2	123	98906917
Pressure tank	2 liter GT-H tank with Rp thread	121	98906908
Sensor kit	Sensor MBS 1900 0-10 bar	200	98906904

**CH/JP BOOSTER SET**

	£	Product Code
Kit, Manometer CMB PS/PT + JPB PT	72	98906913
Kit, 5 way fitting and Gasket	147	98777519
Spacer	OBSOLETE	96587201
Vibration damper	OBSOLETE	96588682
Rivet nut	OBSOLETE	00ID6262
Gasket PK4	OBSOLETE	96603455
Washer	19	00ID2292
Kit, Run Capacitor 20µF IPP	149	96898084
Flexible hose 730mm L) CH/24L	OBSOLETE	00ID3269
Spare, Arm. rubber hose for 50L Tank	124	98986867
Spare, Flexible pipe 20L CH Booster	OBSOLETE	98986791

<b>CP</b>			
<b>CP 2</b>			
		£	Product Code
Shaft seal and gasket kit	all models	610	985140
<b>CP 3</b>			
		£	Product Code
Shaft seal and gasket kit	all models	OBSOLETE	96549650
<b>CP 3 (COLD WATER)</b>			
		£	Product Code
Wear parts kit	1-6 stages	OBSOLETE	315413
	8-12 stages	OBSOLETE	315414
All other parts obsolete			
<b>CP 8</b>			
		£	Product Code
Shaft seal and gasket kit	all models	455	96549654
<b>CP 8K (HOT WATER)</b>			
		£	Product Code
Wear parts kit	1-4 stages	OBSOLETE	325252
	5-10 stages	OBSOLETE	325253
	12-20 stages	OBSOLETE	325254



**CP pump**

**CR / CRI / CRN****CR / CRI / CRN 1, 3 & 5**

			£	Product Code
Shaft seal kit	HQQV	12 mm	295	96455087
	HQQE	12 mm	286	96455086
	HUUV	12 mm	293	96455085
	HUUE	12 mm	285	96455084
	HUBV	12 mm	269	96455083
	HUBE	12 mm	262	96455082
	HQBV	12 mm	268	96455089
	HQBE	12 mm	261	96455088
Gasket kit	FKM (Viton)		192	96455091
	EPDM		116	96455090
Coupling guard	MG 71-80		86	96505130
	MG 90-132		87	96505131
Plug	EPDM / FKM (Viton)		179	96505133
includes air vent, pipe and drain plugs				
Wear parts kit SiC	CR / CRI / CRN 1 & 3	up to 9 stages	407	96455095
	CR / CRI / CRN 1 & 3	10-19 stages	472	96455092
	CR / CRI / CRN 1 & 3	21-27 stages	658	96455093
	CR / CRI / CRN 1 & 3	30-36 stages	823	96455094
Wear parts kit SiC	CR / CRI / CRN 5	up to 7 stages	385	96455096
	CR / CRI / CRN 5	8-12 stages	466	96455097
	CR / CRI / CRN 5	13-16 stages	635	96455098
	CR / CRI / CRN 5	18-22 stages	781	96455099
	CR / CRI / CRN 5	24-26 stages	703	96455101
	CR / CRI / CRN 5	29-36 stages	983	96455100
all wear parts kit with silicon carbide bearings				

**CR / CRN 2**

	£	Product Code	£	Product Code
	CR 2		CRN 2	
Shaft seal and gasket kit	AUUE/V	303 405009	AUUE/V	302 985205
	BUBE	193 405096	BUBE	193 405096
	BUBV	190 405097	BUBV	190 405097
Wear parts kit	Up to 9 stages	413 405098	Up to 9 stages	381 405130
	10-18 stages	515 405099	11-15 stages	511 405131
	22-26 stages	605 405100	18 stages	583 405158
			22-26 stages	747 405132
all wear parts kits with ceramic bearings				

**CR / CRN 4**

	£	Product Code	£	Product Code
	CR 4		CRN 4	
Shaft seal and gasket kit	AUUE/V	364 985202	AUUE/V	302 985205
	BUBE	193 405096	BUBE	193 405096
	BUBV	190 405097	BUBV	190 405097
Wear parts kit	up to 6 stages	435 415286	up to 6 stages	355 415289
	7-12 stages	459 415287	7-12 stages	435 415290
	14-16 stages	547 415349	14-16 stages	557 415331
	19-22 stages	667 415288	19-22 stages	821 415291
all wear parts kits with ceramic bearings				

**CR / CRI / CRN 1, 2, 3, 4 & 5**

		£	Product Code
Coupling complete	14/12	104	415060
	19/12	104	415061
	24/12	177	415062
	28/12	220	415063
	38/12	314	415065

\* Consult Grundfos Product Center for Service Kit Catalogue and Exploded view of the above items



**CR / CRI / CRN****CR / CRN 8 & 16**

	£	Product Code	£	Product Code
	<b>CR 8 &amp; 16</b>		<b>CRN 8 &amp; 16</b>	
Shaft seal and gasket kit	AUUE/V	325	985204	
	BUBE	241	425062	
	BUBV	261	425063	
	<b>CR 8</b>		<b>CRN 8</b>	
Wear parts kit	1-6 stages	515	425066	
	8-12 stages	691	425067	
	14-20 stages	930	425068	
	<b>CR 16</b>		<b>CRN 16</b>	
Wear parts kit	2 to 6 stages	575	335078	
	7 to 10 stages	793	335079	
	12 to 16 stages	1,067	335080	
all wear parts kit with silicon carbide bearings				
			£	Product Code
Coupling complete	14/16		106	339114
	19/16		106	339119
	24/16		156	339124
	28/16		198	339128
	38/16		243	339138
	42/16		311	339142

**CR / CRI / CRN 10, 15 & 20**

		£	Product Code
Shaft seal kit	HQQV 16 mm	353	96511845
	HQQE 16 mm	345	96511844
	HUUUV 16 mm	352	96511841
	HUUE 16 mm	347	96511840
	HUBV 16 mm	332	96511837
	HUBE 16 mm	325	96511836
	HQBV 16 mm	339	96511849
	HQBE 16 mm	324	96511848
Gasket kit	FKM (Viton)	293	96509610
	EPDM	214	96509609
Coupling guard	MG 71-80	62	96509611
	MG 90-100	63	96509612
	MG 132	65	96509613
	MG 132	67	96509614
Plug for CR	EPDM / FKM (Viton)	221	96511311
Plug for CRI/CRN	EPDM / FKM (Viton)	203	96511312
includes air vent, pipe and drain plugs			

Coupling complete	14/16	122	96511315
	19/16	122	96511317
	24/16	179	96511319
	28/16	144	96511350
	38/16	278	96511351
	42/16	359	96511352

	£	Product Code	£	Product Code
	<b>CR / CRI / CRN 10</b>		<b>CR / CRI / CRN 15 &amp; 20</b>	
Wear parts kit SiC	up to 8 stages	439	96511889	
	9-14 stages	620	96511922	
	16-22 stages	801	96511925	
all wear parts kit with silicon carbide bearings				
			£	Product Code
Wear parts kit	up to 6 stages	491	96511824	
	7-10 stages	666	96511827	
	12-17 stages	840	96511830	

\* Consult Grundfos Product Center for Service Kit Catalogue and Exploded view of the above items

**CR / CRN****CR30 & CR60 model A (Cone & Nut version )**

		£	Product Code
Shaft seal and gasket kit	AUUE/V	406	345015

**CR30 & CR60 model B**

		£	Product Code
Shaft seal and gasket kit	AUUE/V	489	345122
	BBUE	382	345180
	BBUV	432	345181

Coupling complete	24/22	OBSOLETE	345106
	28/22	OBSOLETE	345107
	38/22	391	345108
	42/22	402	345109
	48/22	OBSOLETE	345110

	£	Product Code		£	Product Code	
	CR 30			CR 60		
Wear parts kits	1-5 stages	OBSOLETE	345199	2-6 stages	OBSOLETE	365103
	6-8 stages	OBSOLETE	345200	7-8 stages	OBSOLETE	365104
	9-11 stages	OBSOLETE	345201			
	12-13 stages	OBSOLETE	345202			
	14-16 stages	OBSOLETE	345203			

**CRN30 & CRN60 model B**

		£	Product Code
Shaft seal and gasket kit	AUUE/V	487	345111
	BBUE	OBSOLETE	345208
	BBUV	OBSOLETE	345209

	£	Product Code		£	Product Code	
	CRN 30			CRN 60		
Wear parts kits	1-5 stages	OBSOLETE	345189	2-6 stages	OBSOLETE	365111
	6-8 stages	OBSOLETE	345190	7-8 stages	OBSOLETE	365112
	9-11 stages	OBSOLETE	345191			
	12-13 stages	OBSOLETE	345192			
	14-16 stages	OBSOLETE	345193			

**CR 30****ALL ABOVE CODES DISCONTINUED - AVAILABLE WHILE STOCKS LAST**

**CR / CRN****CR, CRN 32, 45, 64, 90, 120 & 150**

				£	Product Code
Shaft seal kit	HQQV	22 mm		457	96525490
	HQQE	22 mm		449	96525458
	HUUUV	22 mm		511	96436728
	HUUE	22 mm		490	96436727
	HQBV	22 mm		423	96525459
	HQBE	22 mm		408	96525457
	HBQV	32 mm	For CR/CRN 120 & 150	1,440	95059801
	HBQE	32 mm	55kW & 75kW	1,440	95059800
Coupling complete	24/22	MG 90		385	96416589
	28/22	MG 100-112		389	96416590
	38/22	MG 132		394	96416591
	42/22	MG 160		398	96416592
	48/22	MG 180		401	96416593
	55/22	Siemens 200-225		406	96416594
	60/32	Siemens 250		1,052	95059812
	65/32	Siemens 280		1,064	95059813
	42/22 with key and keyway	MG 160		OBSOLETE	98987855
	48/22 with key and keyway	MG 180		401	96416593
Plug	EPDM / FKM (Viton)			204	96505136
includes air vent, pipe and drain plugs					
Coupling guards kit	motor frame 90-132			133	96505134
	motor frame 160-225-280			135	96505135
Sensor kit (suitable for all CR(I)E with sensor (AN version))	MBS3000	0-4 bar	G 1/2"	373	96428014
	MBS3000	0-6 bar	G 1/2"	373	96428015
	MBS3000	0-10 bar	G 1/2"	373	96428016
	MBS3000	0-16 bar	G 1/2"	373	96428017
	MBS3000	0-25 bar	G 1/2"	373	96428018

**CR, CRN 32**

		£	Product Code	£	Product Code
		model A		model B*	
Wear parts kit	1-2 stages	239	96416728	170	98497130
	3-7 stages	570	96416729	388	98497451
	8-11 stages	795	96416730	523	98497452
	12-14 stages	941	96416731	638	98497453
* all wear parts kit with graflon bearings					
Intermediate bearing kit	3-7 stages	OBSOLETE	96416574	N/A	
	8-14 stages	OBSOLETE	96416576	N/A	
Bottom bearing kit		334	96416580	N/A	
Gasket kit	EPDM			173	96416597
	FKM (Viton)			295	96416598

**CR, CRN 45**

		£	Product Code	£	Product Code
		model A		model B*	
Wear parts kit	1-2 stages	246	96416732	185	98497473
	3-7 stages	588	96416733	424	98497474
	8-10 stages	770	96416734	530	98497475
	11-13 stages	928	96472046	679	98497476
* all wear parts kit with graflon bearings					
Intermediate bearing kit	3-7 stages	OBSOLETE	96416577	N/A	
	8-13 stages	OBSOLETE	96416578	N/A	
Bottom bearing kit		334	96416580	N/A	
Gasket kit	EPDM			209	96416599
	FKM (Viton)			342	96416600

## CR / CRN

### CR, CRN 64

		£	Product Code	£	Product Code
		model A		model B*	
Wear parts kit	1-2 stages	263	96416735	221	98497494
	3-8 stages	695	96416736	528	98497495
* all wear parts kit with graflon bearings					
Intermediate bearing kit	3-8 stages	OBSOLETE	96416573	N/A	
Bottom bearing kit		334	96416580	N/A	
Gasket kit	EPDM	N/A		209	96416599
	FKM (Viton)	N/A		342	96416600

### CR, CRN 90

		£	Product Code	£	Product Code
		model A		model B*	
Wear parts kit	1-2 stages	269	96416737	219	98497509
	3-6 stages	591	96416738	438	98497510
Intermediate bearing kit	3-6 stages	N/A		N/A	
Gasket kit	EPDM			242	96416601
	FKM (Viton)			414	96416602

### CR, CRN 120 & 150

		£	Product Code
Gasket kit	EPDM	331	95059804
	FKM (Viton)	752	95059805

	£	Product Code		£	Product Code	
	CR, CRN 120			CR, CRN 150		
Wear parts kit	1 stage	372	95059806	1 stage	360	95059809
	2-4 stages	901	95059807	2-3 stages	764	95059810
	5-7 stages	1,383	95059808	4-6 stages	1,313	95059811

### Replacement for old Exxx shaft seals on CR(N)(E) 32, 45, 64 & 90

HQQx shafts seals have replaced all Exxx seals.

Old type	New type
EUHE EUBE EUUE EQQE	HQQE
EUHV EUBV EUUV EQQV	HQQV
EUUK	HQQK



CR pumps

**CR / CRN****CR, CRN 95, 125, 155**

		Motor flange size	£	Product Code
Kit coupling guard		FF265-350	157	99196379
		FF350-400	157	99196380
		FF400-600	161	99196381
		FF500-600	161	99196382

		Motor/pump shaft diameter	£	Product Code
Kit coupling, complete		38/22	371	99190032
		42/22	371	99190035
		48/22	311	99190038
		55/22	311	99190039
		60/22	494	99190040
		65/28	565	99190041
		65/36	523	99190044

		CR, CRN 95		CR, CRN 125, 155	
n° stages		£	Product Code	£	Product Code
Kit strap	1	88	99190046	91	99190058
	2	90	99190047	92	99190059
	3	92	99190048	95	99190060
	4	95	99190049	98	99190061
	5	98	99190050	101	99190062
	6	100	99190051	104	99190063
	7	103	99190052	106	99190064
	8	105	99190053	108	99190065
	9	107	99190054	112	99190066
	10	109	99190055	115	99190067
	11	112	99190056	117	99190068
	12	115	99190057	121	99190069

		CR, CRN 95 (PN30)		CR, CRN 95 (PN40)	
n° stages		£	Product Code	£	Product Code
Kit staybolt	1	111	99190078	OBSOLETE	99190086
	2	117	99190079	OBSOLETE	99190087
	3	123	99190080	176	99190088
	4	129	99190081	196	99190089
	5	136	99190082	217	99190090
	6	143	99190083	238	99190091
	7	149	99190084	259	99190092
	8	155	99190085	278	99190093
	9		N/A	299	99190094
	10		N/A	319	99190095
	11		N/A	341	99190096
	12		N/A	360	99190097

		CR, CRN 125,155 (PN30)		CR, CRN 125,155 (PN40)	
n° stages		£	Product Code	£	Product Code
Kit staybolt	1	146	99190098	OBSOLETE	99190105
	2	158	99190099	192	99190106
	3	168	99190100	220	99190107
	4	176	99190101	246	99190108
	5	195	99190102	275	99190109
	6	197	99190103	302	99190110
	7		N/A	331	99190111
	8		N/A	359	99190112
	9		N/A	385	99190113
	10		N/A	414	99190114
	11		N/A	441	99190115
	12		N/A	470	99190116

# CR / CRN

CR, CRN 95, 125, 155

		Shaft diameter	Elastomer	£	Product Code
Kit shaft seal	22mm		HQQE	365	99262346
			HQQV	378	99262347
			HQBE	352	99262348
			HQBV	366	99262349
			HUUE	443	99416307
			HUUV	456	99416308
	28mm		HQQE	790	99262350
			HQQV	1,081	99262351
			HQBE	844	99262352
			HQBV	1,134	99262353
			HUUE	2,196	99416318
			HUUV	2,462	99416319
	36mm		HQQE	1,359	99262354
			HQQV	2,028	99262355
			HQBE	1,073	99262356
			HQBV	1,392	99262357
			HUUE	2,295	99416328
			HUUV	2,595	99416329

			Elastomer	£	Product Code
Kit shaft seal, wear parts only	28mm		HQQE	321	99262358
			HQQV	646	99262359
			HQBE	394	99262360
			HQBV	703	99262361
	36mm		HQQE	406	99262362
			HQQV	841	99262363
			HQBE	433	99262364
			HQBV	942	99262365

			Elastomer	£	Product Code
Kit plug			EPDM	163	99262366
			FKM	164	99262367
			EPDM with TDH in base	185	99262370
			FKM with TDH in base	190	99262371

		Shaft seal diameter		Elastomer	£	Product Code
Kit o-ring	22mm	CR 95		EPDM	187	99262378
				FKM	300	99262379
		CR 125, 155		EPDM	205	99262380
				FKM	331	99262381
	28mm	CR 95		EPDM	202	99262384
				FKM	522	99262385
		CR 125, 155		EPDM	219	99262386
				FKM	553	99262387
	36mm	CR 125, 155		EPDM	225	99262392
				FKM	588	99262393

			£	Product Code
Kit bottom flange			755	99262396

		Shaft diameter	Stages	SiC		WC	
				£	Product Code	£	Product Code
Kit bearing	CR, CRN 95	22mm	1	223	99262442	391	99415811
			2-4	202	99262443	625	99415812
			5-12	321	99262446	635	99415825
	CR, CRN 95-155	28mm	1-4	457	99262444	520	99415823
			5-12	796	99262447	915	99415826
		36mm	1-4	OBSOLETE	99262445	616	99415824
			5-12	OBSOLETE	99262448	1,056	99415827

# CR / CRN

CR, CRN 95, 125, 155

			£	Product Code
Kit Thrust Handling Device	CR 95	SiC/SiC	OBSOLETE	99262409
		WC/SiC	OBSOLETE	99445736
	CR 125	SiC/SiC	OBSOLETE	99262410
		WC/SiC	2,907	99445737
	CR 155	SiC/SiC	2,460	99262411
		WC/SiC	3,332	99445738

		Elastomer	£	Product Code
Kit o-ring for THD	CR 95	EPDM	173	99262397
		FKM	266	99262398
	CR 125	EPDM	188	99262399
		FKM	282	99262400
	CR 155	EPDM	190	99262401
		FKM	282	99262402

	Stages		Shaft diameter	£	Product Code
Kit wear parts	1-4	CR, CRN 95	22mm	292	99262415
			28mm	OBSOLETE	99262416
		CR, CRN 125	28mm	383	99262417
			36mm	OBSOLETE	99262418
		CR, CRN 155	28mm	480	99262419
			36mm	OBSOLETE	99262420
	5-8	CR, CRN 95	22mm	502	99262424
			28mm	OBSOLETE	99262425
		CR, CRN 125	28mm	701	99262426
			36mm	OBSOLETE	99262427
		CR, CRN 155	28mm	870	99262428
			36mm	OBSOLETE	99262429
	9-12	CR, CRN 95	22mm	OBSOLETE	99262433
			28mm	OBSOLETE	99262434
		CR, CRN 125	28mm	1,060	99262435
			36mm	OBSOLETE	99262436
		CR, CRN 155	28mm	1,354	99262437
			36mm	OBSOLETE	99262438

		Material	Size	£	Product Code
Kit loose flange	CR,CRN 95	Cast iron	DN100 PN16	179	99432754
			DN100 PN25/40	197	99432755
		Stainless steel	DN100 PN16	677	99432731
			DN100 PN25/40	785	99432732
	CR,CRN 125, 155	Cast iron	DN150 PN16	488	99432761
			DN150 PN25/40	477	99432760
		Stainless steel	DN150 PN16	936	99432733
			DN150 PN25/40	1,196	99432734

			£	Product Code
Spare base	CR 95	Loose flange	984	99196466
		Loose flange	2,215	99196467
	CRN 95	Collar flange PN16	3,202	99196468
		PJE flange	3,591	99196469
		Loose flange with THD	OBSOLETE	99196470
		PJE flange with THD	OBSOLETE	99196471
	CR 125, 155	Loose flange	1,292	99196472
		Loose flange	5,081	99196473
	CRN 125, 155	Collar flange PN10	4,967	99196474
		PJE flange	5,407	99196475
		Loose flange with THD	5,979	99196476
		PJE flange with THD	6,336	99196477



**CR / CRN****CR, CRN 95, 125, 155**

		Shaft seal thread diameter	£	Product Code
Spare cover	CR 95	M50	1,773	99196493
	CRN 95	M50	1,773	99196494
		M66	OBSOLETE	99196495
	CR 125, 155	M50	703	99196496
	CRN 125, 155	M50	2,407	99196497
		M66	2,407	99196498

		CR 95 (PN30)		CRN 95 (PN30)	
n° stages		£	Product Code	£	Product Code
	1	415	99196401	454	99196419
	2	500	99196402	569	99196420
	3	605	99196413	707	99196421
	4	703	99196414	827	99196422
	5	876	99196415	1,023	99196423
	6	984	99196416	1,162	99196424
	7	1132	99196417	1,321	99196425
	8	1245	99196418	1,457	99196426

		CR, CRN 125, 155 (PN30)	
n° stages		£	Product Code
	1	643	99196439
	2	862	99196440
	3	1,076	99196441
	4	1,342	99196442
	5	1,580	99196443
	6	1,830	99196444

		CRN 95 (PN40)		CRN 125, 155 (PN40)	
n° stages		£	Product Code	£	Product Code
	1	OBSOLETE	99196427	OBSOLETE	99196445
	2	OBSOLETE	99196428	1,000	99196446
	3	901	99196429	1,247	99196447
	4	1050	99196430	1,544	99196448
	5	1243	99196431	1,842	99196449
	6	1409	99196432	2,171	99196450
	7	1561	99196433	2,051	99196451
	8	1725	99196434	2,817	99196452
	9	OBSOLETE	99196435	3,166	99196453
	10	OBSOLETE	99196436	3,467	99196454
	11	OBSOLETE	99196437	3,417	99196455
	12	OBSOLETE	99196438	OBSOLETE	99196456

## CRT

### CRT 2 & 4

	shaft $\varnothing$	£	Product Code
Coupling complete	14/12	104	415060
Coupling complete	19/12	104	415061
Coupling complete	24/12	177	415062
Coupling complete	28/12	220	415063
Coupling complete	38/12	314	415065

### CRT 2

	Production date (yr wk)		£	Product Code
Shaft seal kit	before 0336	AUUE	430	405346
Shaft seal kit	before 0336	AUUV	386	405349
Wear parts kits	before 0336	2-10 stages	905	96434799
Wear parts kits	before 0336	11-18 stages	856	96434800
Wear parts kits	before 0336	22-26 stages	1,040	96434801
Shaft seal kit	after 0335	AUUE	434	96513598
Shaft seal kit	after 0335	AUUV	475	96513599
Wear parts kits	after 0335	2-9 stages	527	96513600
Wear parts kits	after 0335	11-18 stages	698	96513601
Wear parts kits	after 0335	22-26 stages	870	96513602

### CRT 4

	Production date (yr wk)		£	Product Code
Shaft seal kit	before 0336	AUUE	430	405346
Shaft seal kit	before 0336	AUUV	386	405349
Wear parts kits	before 0336	1-6 stages	934	96434802
Wear parts kits	before 0336	7-12 stages	837	96434803
Wear parts kits	before 0336	14-16 stages	971	96434804
Wear parts kits	before 0336	19-22 stages	1,162	96434805
Shaft seal kit	after 0335	AUUE	434	96513598
Shaft seal kit	after 0335	AUUV	475	96513599
Wear parts kits	after 0335	1-6 stages	536	96513603
Wear parts kits	after 0335	7-12 stages	681	96513604
Wear parts kits	after 0335	14-16 stages	796	96513605
Wear parts kits	after 0335	19-22 stages	929	96513606



CRT

**CRT****CRT 8 & 16**

			£	Product Code
Coupling complete	14/16	CRT 8 & 16	106	339114
Coupling complete	19/16	CRT 8 & 16	106	339119
Coupling complete	24/16	CRT 8 & 16	156	339124
Coupling complete	28/16	CRT 8 & 16	198	339128
Coupling complete	38/16	CRT 8 & 16 before 0405	243	339138
Coupling complete	42/16	CRT 8 & 16 before 0405	311	339142
Coupling complete	38/16 short	CRT 8 & 16 after 0404	278	96511351
Coupling complete	38/16	CRT 8 & 16 after 0404	OBSOLETE	96491088
Coupling complete	42/16 short	CRT 8 & 16 after 0404	OBSOLETE	96492113
Coupling complete	42/16	CRT 8 & 16 after 0404	359	96511352
Gasket kit	after 0404	CRT 8 & 16 FFKM	3,221	96545210

**CRT 8**

			£	Product Code
Shaft seal kit	before 0405	AUUE	564	425303
Shaft seal kit	before 0405	AUUV	523	425304
Wear parts kits	before 0405	1-8 stages	1,112	96434806
Wear parts kits	before 0405	10-14 stages	1,237	96434807
Wear parts kits	before 0405	16-20 stages	1,613	96434808
Shaft seal kit	after 0404	AUUE	586	96521638
Shaft seal kit	after 0404	AUUV	638	96521639
Wear parts kits	after 0404	1-6 stages EPDM	705	96521680
Wear parts kits	after 0404	10-14 stages EPDM	990	96521681
Wear parts kits	after 0404	17-20 stages EPDM	1,290	96521682

**CRT 16**

			£	Product Code
Shaft seal kit	before 0405	AUUE	564	425303
Shaft seal kit	before 0405	AUUV	523	425304
Shaft seal kit	after 0404	AUUE	586	96521638
Shaft seal kit	after 0404	AUUV	638	96521639
Wear parts kits	before 0405	2-6 stages	1,382	96434809
Wear parts kits	before 0405	7-10 stages	1,425	96434810
Wear parts kits	before 0405	12-16 stages	1,905	96434811
Wear parts kits	after 0404	2-5 stages	709	96521686
Wear parts kits	after 0404	6-10 stages	1,026	96521687
Wear parts kits	after 0404	12-17 stages	1,373	96521688

**CRT pump**

CRK, SPK						
CRK 2 & 4						
				£	Product Code	
Shaft seal kit			AUUV		200	415080
			BUBV		196	415085
			AUUK		1,216	985720
Wear parts kit	CRK 2 model A, B & C	up to 18 stages	FKM		255	98311420
			EPDM		225	98311415
		up to 26 stages	FKM		381	98331664
			EPDM		225	98311415
	CRK 4	up to 12 stages	FKM		337	98311432
			EPDM		298	98311416
		up to 16 stages	FKM		451	98311435
			EPDM		412	98311417
			up to 22 stages	FKM		369
EPDM		329		98311419		
Rectangular flange					56	405178
CRK 8 & 16						
				£	Product Code	
Shaft seal kit			AUUV		263	425089
Wear parts kit	CRK 8 model B	2-8 chambers	1-8 impellers		399	425090
		10-14 chambers	1-14 impellers		625	425091
		16-20 chambers	1-20 impellers		621	425092
	CRK 16	2-6 chambers	1-6 impellers		349	335091
		7-10 chambers	7-10 impellers		506	335092
		12-16 chambers	12-16 impellers		692	335093
CRK 30 & 60						
				£	Product Code	
Shaft seal kit					469	345294
Wear parts kit	CRK 30 model A	2-3 chambers	1-3 impellers		OBSOLETE	345290
		4-16 chambers	1 impeller			
		4-11 chamber	2-11 impellers		OBSOLETE	345291
		12-16 chambers	2-6 impellers			
		12-16 chambers	7-10 impellers		OBSOLETE	345292
	CRK 60	12-16 chambers	11-16 impellers		OBSOLETE	345293
		2-3 chambers	1-3 impellers		OBSOLETE	365196
		4-10 chambers	1 impeller			
		4-10 chambers	2-8 impellers		OBSOLETE	365197
SPK 2, 4 & 8						
				£	Product Code	
Shaft seal kit	SPK 1, 2 & 4 model C & D	CVBV			99	395008
		AUUV			172	395091
Wear parts kit	SPK 1, 2 & 4 model C & D	1-8 stages			352	395090
		9-23 stages			518	395089
	SPK 8	1-15 chambers	1 impeller		384	395093
		2-15 chambers	2-3 impellers	incl. SPK 8-5/5	404	395094
		7-15 chambers	5 impellers	excl.SPK 8-5/5	542	395095
			2-3 impellers	with extension pipe		
		7-15 chambers	7-9 impellers	excl. SPK 8-12/9	633	395096
		12-15 chambers	12-15 impellers		815	395097
		12 chambers	9 impellers	incl. SPK 8-12/9	781	395098
		15 chambers	5-15 impellers	with extension pipe		
Rectangular flange	SPK 1, 2 & 4 (model C & D)			73	395104	
	SPK 8			56	405178	

## MTH, MTR

### MTH

			£	Product Code
Shaft seal kit	MTH 2 & 4	AUUV	117	435045
		AQQV	123	98455535
	MTH 8, 12 & 16	AUUV	117	96431994
Wear parts kit	MTH 2	3-4 chambers	128	435032
		5-11 chambers	210	435033
	MTH 4	2-3 chambers	160	445057
		4-8 chambers	222	445058
	MTH 8, 12		681	96435991
	MTH 16		312	96435992

### MTR 1S, 1, 3, 5 & 8

			£	Product Code
Shaft seal kit		HUUE	285	96455084
		HUUV	293	96455085
		HQQE	286	96455086
		HQQV	295	96455087
		HUUK	1,029	96533324
		HQQK	1,021	96533326

		EPDM		FKM		
		£	Product Code	£	Product Code	
Wear parts kit	MTR 1S, 1 & 3	2-9 chambers *	211	96530909	211	96530909
		10-19 chambers	326	98311342	366	98311373
		20-27 chambers	428	98311345	388	98311381
		29-36 chambers	532	98311346	592	98311382
		37-42 chambers	571	98311347	577	98311383
		43-49 chambers	616	98311348	622	98311384
	MTR 5	2-7 chambers *	266	96531003	266	96531003
		8-16 chambers	461	98311349	469	98311385
		17-22 chambers	503	98311350	701	98311386
		24-32 chambers	694	98311371	771	98311388
	MTR 8	2-7 chambers *	241	98788385	241	98788385
		8-16 chambers	316	98788386	324	98807648
		17-22 chambers	405	98788387	441	98807649
		24-31 chambers	568	98788388	555	98807650

\* without o-ring

### MTR 10, 15 & 20

			£	Product Code
Shaft seal kit		HUUE	347	96511840
		HUUV	352	96511841
		HQQE	345	96511844
		HQQV	353	96511845
		HUUK	1,319	96511842
		HQQK	1,257	96511846
Wear parts kit	MTR 10	2-9 chambers	492	96531041
		10-16 chambers	691	96531042
		18-22 chambers	762	96531043
		23-27 chambers	659	97689849
		28-31 chambers	907	97689850
	MTR 15 & 20	2-9 chambers	488	96531044
		10-17 chambers	710	96531045
		18-21 chambers	783	97689487

MTR					
MTR 32, 45 & 64 - model A					
			£	Product Code	
Shaft seal kit		HUUE	555	96441768	
		HUUV	449	96525458	
		HQQE	457	96525490	
		HQQV	490	96436727	
		HUUK	2,612	96533367	
		HQQK	2,587	96533369	
Wear parts kit	MTR 32	1-4 chambers	1-4 impellers	413	96430767
		5-8 chambers	1-3 impellers	430	96491254
		9-14 chambers	1-3 impellers	412	96491255
		5-8 chambers	5-8 impellers	713	96430768
		9-14 chambers	4-8 impellers	673	96491256
		9-14 chambers	9-12 impellers	1,007	96430769
	MTR 45	1-4 chambers	1-4 impellers	433	96430773
		5-8 chambers	1-3 impellers	441	96491257
		9-12 chambers	1-3 impellers	412	96491370
		5-8 chambers	4-8 impellers	750	96430775
		9-12 chambers	4-8 impellers	692	96491371
		MTR 64	1-4 chambers	1-4 impellers	429
	5-8 chambers		1-3 impellers	463	96491372
	9-12 chambers		1-3 impellers	438	96491373
	5-8 chambers		4-5 impellers	650	96430820
	9-12 chambers		4-5 impellers	608	96491374
	MTR 32, 45, 64 & 90 - model B				
			£	Product Code	
Shaft seal kit		HUUE	555	96441768	
		HUUV	449	96525458	
		HQQE	457	96525490	
		HQQV	490	96436727	
		HUUK	2,612	96533367	
		HQQK	2,587	96533369	
Wear parts kit	MTR 32	1-4 chambers	1-4 impellers	192	98628296
		5-8 chambers	1-3 impellers	206	98628298
		9-12 chambers	1-3 impellers	228	98628337
		5-8 chambers	5-8 impellers	282	98629661
		9-14 chambers	4-8 impellers	306	98629668
		9-14 chambers	9-14 impellers	397	98629669
		15-18 chambers	1-3 impellers	246	98629682
		15-18 chambers	4-8 impellers	324	98629683
	MTR 45	15-18 chambers	9-14 impellers	414	98629684
		1-4 chambers	1-4 impellers	231	98629686
		5-8 chambers	1-3 impellers	241	98629689
		9-12 chambers	1-3 impellers	227	98629690
		5-8 chambers	4-8 impellers	328	98629716
		9-12 chambers	4-8 impellers	326	98629718
		13-17 chambers	1-3 impellers	242	98629719
		13-17 chambers	4-8 impellers	339	98629732
	MTR 64	1-4 chambers	1-4 impellers	234	98629735
		5-8 chambers	1-3 impellers	250	98629736
		9-12 chambers	1-3 impellers	266	98629738
		5-8 chambers	4-5 impellers	255	98629739
		9-12 chambers	4-5 impellers	288	98629740
		13-17 chambers	1-3 impellers	291	98629741
		13-17 chambers	4-5 impellers	298	98629743

**CLM / CLP / CDM / CDP / NM / NP / LM / LP / LMD / LPD**
**CLM / CLP / CDM / CDP model A (smooth base)**

				£	Product Code
Shaft seal kit	32mm shaft	CLM 100 & CLM 125	BAQE	905	50608156
		CDM 125 & 150			
		CLP 65 & CLP 80 (11kW and above)	BQQE	2,407	96479822
		CDP 80 (11kW and above) & CDI			
Shaft seal kit	45mm shaft	CLM 150 & CLM 200	BAQE	1,537	50608158
		CDM 200 & 210			
		CLP 100	BQQE	2,526	96479823
		CDP 125			

**CLM / CLP / CDM model B (ribbed base)**

				£	Product Code
Shaft seal kit	33mm shaft	CLM 100 & CLM 125 CDM 125 & CDM 150	BBUE	882	50810108
			BQQE	1,607	96432382
			GQQE	2,810	96432384
Shaft seal kit	33mm shaft	CLM 150 & CLM 200 CDM 200 & CDM 210	BBUE	1,306	50810109
			BQQE	1,729	96432381
			GQQE	1,929	96432383

**LM / LP (model C & D) / NM / NP**

				£	Product Code
Shaft seal and gasket kit	16mm shaft	o'ring type (EPDM)	AUUE	498	485113
		bellows type (EPDM)	BUBE	315	485351
		reduced face for glycol mixes / chilled water	RUUE/V	442	985845
Shaft seal and gasket kit	22mm shaft	o'ring type (EPDM)	AUUE	549	485114
		bellows type (EPDM)	BBUE	563	485278
		reduced face for glycol mixes / chilled water	RUUE/V	491	985909
Shaft seal and gasket kit	33mm shaft	bellows type (EPDM)	BBUE	1,015	485353
		reduced face for glycol mixes / chilled water	GQQE	3,185	985624
Wear parts kit	16mm shaft	includes AUUE shaft seal and shaft		530	485125
	22mm shaft	includes AUUE shaft seal and shaft		936	485122
Wear parts kit	16mm shaft	includes BUBE shaft seal and shaft		521	485352
	22mm shaft	includes BBUE shaft seal and shaft		910	485279
Wear parts kit	33mm shaft	includes BUBE shaft seal and shaft		1,782	485354
	33mm shaft	includes BUUE shaft seal and shaft		1,767	485449
Flap valve for twin head pumps		LMD 50		473	485363
		LPD 65, LMD 65		OBSOLETE	485364
		LPD 80, LMD 80		OBSOLETE	485365
		LPD 100, LMD 100, LPD 125		OBSOLETE	485366
Coupling complete		14/16		106	339114
		19/16		106	339119
		24/16		156	339124
		28/16		198	339128
		28/22		OBSOLETE	345107
		38/22		391	345108
		42/22		402	345109


**CDM pump**



## UMT, UPT

### UMT(D) / UPT(D)

		Shaft diameter	Model	£	Product Code	
Shaft seal kit	AUUE	16mm	B, C, D	OBSOLETE	495063	
	BUBE	16mm	B, C, D	OBSOLETE	495078	
	RUUE/V	16mm	B, C, D	249	985844	
	BQQE	16mm	B, C, D	OBSOLETE	96436691	
	CVBE/V	12mm	A, B	180	495067	
Wear parts kits with shaft seal	-	16mm	A	OBSOLETE	985271	
	AUUE	16mm	B, C, D	OBSOLETE	495064	
	BUBE	16mm	B, C, D	OBSOLETE	495079	
	CVBE	UPT 25-50	12mm	A	OBSOLETE	96552581
	CVBE	UPT 25-50	12mm	B	OBSOLETE	96552567
	CVBE	UPT 25-90	12mm	A	OBSOLETE	96552582
	CVBE	UPT 25-90	12mm	B	OBSOLETE	96552568
	CVBE	UPT 32-30; 40-50	12mm	A	OBSOLETE	96552583
	CVBE	UPT 32-90; 40-90	12mm	A	OBSOLETE	96552584
	CVBE	UPTD 25/32/40-50;40-90	12mm	A	OBSOLETE	495068
	CVBE	UPTD 25/32/40-50;40-90	12mm	B	OBSOLETE	495083
Coupling complete		14/16		106	339114	
		19/16		106	339119	
		24/16		156	339124	
		28/16		198	339128	
	Flap valve for twin head pumps				OBSOLETE	545196

Please check Grundfos Product Centre for complete pump service drawings



UMT and UPT range

# TP

## TP series 100 & 200

				£	Product Code	
Shaft seal kit	12mm shaft	Series 100 model A	TP 25-50/2; -80/2; -90/2	BUBE	192	96409293
			TP 32-50/2, -80/2, -90/2	BQQE	383	96508806
			TP 40-50/2, -80/2, -90/2	GQQE	432	96508807
	12mm shaft	Series 100 model B	TP 25 all	BUBE	222	98284949
			TP 32-50/2, -80/2, -90/2	BQQE	294	98284950
			TP 40-50/2, -80/2, -90/2	GQQE	317	98284961
	12mm shaft	Series 200	TP 32-60/2 TP 40-30/x	AUUE	206	96409264
				RUUE/V	298	96432881
				BQQE	367	96488632
				BQQV	398	96488634
				BUBE	290	96409265
				AUUE	209	96409266
16mm shaft	Series 200	all others	RUUE/V	249	985844	
			BQQE	402	98313337	

Wear parts kit	Series 100 model A	TP 25-50/2	OBSOLETE	96408790
		TP 25-90/2	OBSOLETE	96408791
		TP 32-50, 40-50 /2	342	96408792
		TP 32-90, 40-90 /2	OBSOLETE	96408793
	Series 100 model B	TP 25-50	318	98284938
		TP 25-80	316	98284939
		TP 32-50; TP 40-50	291	98284941
		TP 32-80; TP 40-80	292	98284942
		TP 25-90, TP 32-90; TP 40-90	336	98284940
	Series 200	TP 32-60/2	393	96414029
		TP 40-60/4	325	96436361
		TP 32-30/4	471	96414027
		TP 32-40;	351	96414028
		TP 32 -40, -60/4, -150, -180, -220, -230, -260, -330	358	96414031
		TP 40 -80/4, -90/4, -160, -180, -190, -230, -270, -330, -390		
		TP 50 -60/4, -80/4, -120, -160, -180, -240		
		TP 65 -120, -160	397	96409269
		TP 80 -30, -40, -60, -80		
		TP 100 except -160		
	TPE model B	TPE 25-50	277	98284943
		TPE 25-80	260	98284944
		TPE 32-50; TPE 40-50	344	98284945
		TPE 32-80; TPE 40-80	302	98284946
		TPE 25-90, TPE 32-90; TPE 40-90	336	98284940

Coupling complete	11/12	192	495081
	14/12	104	415060
	16/16	106	339114
	19/16	106	339119
	24/16	156	339124
	28/16	198	339128

Flap valve for twin head pumps	TPD 32	67	96407253
	TPD 40	68	96407254
	TPD 50	143	96407255
	TPD 65	73	96407256
	TPD 80	75	96407257
	TPD 100	157	96407258

For **blanking plates** for twin head pumps, please, consult Cat1 price list.



**TP Series 100**



**TPD Series 200**

# TP

## TP series 300

			£	Product Code
Shaft seal kit	BAQE		197	96488302
	BAQV		246	96548353
	BQQE		214	98434904
	BQQV		274	98434905
	BBQE		206	96551963
	GQQE		290	96488303
	GQQV		405	96504870
	DAQF		2,003	96548355

			£	Product Code
Shaft seal kit	BAQE		263	96537605
	BAQV		383	96548357
	BQQE		334	98434906
	BQQV		431	98434908
	BBQE	38mm shaft	294	96551928
	GQQE		461	96537606
	GQQV		776	96537608
	DAQF		2,319	96548359
	DQQE		3,890	97769897

			£	Product Code
Shaft seal kit	BAQE		405	96306475
	BAQV		1,278	96658801
	BQQE		599	98434943
	BQQV		861	98434944
	BBQE	55mm shaft	1,253	96658804
	GQQE		1,078	96306477
	GQQV		1,603	96658803
	DAQF		2,720	96658807
	DQQE		11,288	97685596

		Length	£	Product Code
Spacer ring for shaft seal	38mm shaft	15.5mm	154	96591277
	28mm shaft	7.5mm	128	96938597
	38mm shaft	10mm	108	96938599
	48mm shaft	15mm	146	96938602
	55mm shaft	22.5mm	157	96938604
	60mm shaft	17.5mm	207	96938606
	38mm shaft	15.5mm	190	96930797
	38mm shaft	10mm	190	96930797

		£	Product Code	£	Product Code
Gasket kit	177.39x3,53		EPDM (E)	65	97757697
	221.84x3,53		75	97757659	
	253.6x3,53		42	97757671	
	278.99x3,53		46	97757672	
	329.79x3,53		47	97757673	
	430.66x3,53		49	97757675	
			87	97757676	

		£	Product Code
		FXM (F)	
Gasket kit	177.39x3,53	434	97790022
	221.84x3,53	1,142	97790080
	253.6x3,53	1,165	97790081
	278.99x3,53	963	96887763
	329.79x3,53	1,215	96887764
	430.66x3,53	1,684	96887765

Confirm gasket kit PN for each pump model using the Grundfos Product Center

For **blanking plates** for twin head pumps, please, consult Cat1 price list.



TP Series 300

# TP

## TP series 300

				motor frame	£	Product Code
Shaft kit	28mm shaft		71		616	96039349
			80		648	96039350
			90		663	96039351
			100-112		687	96039352
			132		789	96039353
			160		886	96039354
			180		983	96039355
			200		1,042	96039356
Shaft kit	38mm shaft		100-112		1,058	96039357
			132		589	96039358
			160		1,020	96039359
			180		1,091	96039360
			200		1,172	96039361
			225-250		1,387	96537609
	225 (2 poles)		983	96537610		
Shaft kit	48mm shaft		180-200		1,183	96306478
			225		1,913	96306479
Shaft kit	55mm shaft		180-200		1,268	96306488
			225-250-280-315		2,437	96306480
Wear ring kit	Bronze		TP 150 in pump housing	D185/D199x15	259	96810109
			TP 150 in cover	D154/D168x15	220	96797628
			TP 200 in pump housing	D224/D238x15	321	96810112
			TP 200 in cover	D224/D238x15	321	96810112

		£	Product Code	£	Product Code
		Flap valve		Cover	
Flap valve for twin head pumps	TPD, TPED 32, 40, 50	474	96488633	OBSOLETE	96476895
	TPD, TPED 65	475	96488631	OBSOLETE	96476895
	TPD, TPED 80	512	96537612	OBSOLETE	96506492
				OBSOLETE	96506493
	TPD, TPED 100, 125	611	96537613	OBSOLETE	96506494
	TPD, TPED 125, 150	726	96537614	OBSOLETE	96506495

## TPE2, TPE2 D, TPE3, TPE3 D

		£	Product Code
Shaft seal kit	BUBE	203	98660102
	BQQE	485	98660103
	GQQE	482	98660104
	BUBV	215	98660105
	BQQV	388	98660106
	GQQV	666	98660107
Flap valve for twin head pumps	DN 32	171	98660108
	DN 40	178	98660109
	DN 50	184	98660110
	DN 65	192	98660111
	DN 80	202	98660112
	DN 100	238	98660113
Gasket kit	EPDM	73	98660099
	FKM	98	98811502
Air vent screw	all models	97	98164277
Bleed Screw	all models	36	96620482
Clamp	all models	213	98660114
Motor stool	all models	339	98660053
Sensor and cable	TPE3	311	98802463

## NB, NK

### NK - model A (for PN Kxxxxxxx and Dxxxxxxx)

		£	Product Code
Shaft seal kit	BAQE	28 mm	186 97904582
		38 mm	263 96537605
		48 mm	358 96591237
		65 mm	710 96591633
	GQQE	28 mm	290 96488303
		38 mm	461 96537606
		48 mm	OBSOLETE 96433691
		65 mm	1,041 96433692
	BQQE	28 mm	214 98434904
		38 mm	OBSOLETE 96537607
		48 mm	OBSOLETE 96587317
		65 mm	OBSOLETE 96422160
	BAQV	28 mm	128 97904583
		38 mm	OBSOLETE 96549067
		48 mm	760 96587314
		65 mm	OBSOLETE 96029562
	GQQV	28 mm	OBSOLETE 96433693
		38 mm	OBSOLETE 96433694
		48 mm	OBSOLETE 96433695
		65 mm	OBSOLETE 96433696
	BQQV	28 mm	214 97904586
		38 mm	OBSOLETE 96549066
		48 mm	780 96549069
		65 mm	OBSOLETE 96029558
	DAQF	28 mm	OBSOLETE 96505023
		38 mm	OBSOLETE 96505022
		48 mm	OBSOLETE 96504926
		65 mm	3,748 96504927
	DQQE	28 mm	OBSOLETE 96433681
		38 mm	OBSOLETE 96433682
		48 mm	OBSOLETE 96433683
		65 mm	OBSOLETE 96433684
	DQQV	28 mm	OBSOLETE 96433685
		38 mm	OBSOLETE 96433686
		48 mm	OBSOLETE 96433687
		65 mm	OBSOLETE 96433688



NK pump - model A

# NB, NK

## NB & NK - model B

		Pump material version: A, B, C, D, E, F, G, H, I, J, K, M, N, P, S, T, U, W		Pump material version: L and R		
		£	Product Code	£	Product Code	
Shaft seal kit	BAQE	28 mm	197	96488302	1,070	96658825
		38 mm	263	96537605	1,255	96658836
		48 mm	299	96306472	1,512	96658857
		55 mm	405	96306475	3,781	97769919
		60 mm	649	96658812	6,784	97769920
	GQQE	28 mm	290	96488303		
		38 mm	461	96537606		
		48 mm	814	96306474		
		55 mm	1,078	96306477		
		60 mm	1,092	96658814		
	BQQE	28 mm	214	98434904	1,277	96658826
		38 mm	334	98434906	1,848	96658837
		48 mm	455	98434909	2,498	96658858
		55 mm	599	98434943	2,062	97769927
		60 mm	1,068	98434945	4,128	97769928
	BAQV	28 mm	246	96548353	1,262	96658827
		38 mm	383	96548357	1,301	96658838
		48 mm	1,040	96658791	2,611	96658860
		55 mm	1,278	96658801	3,336	97769921
		60 mm	1,304	96658815	6,784	97769922
	GQQV	28 mm	405	96504870		
		38 mm	776	96537608		
		48 mm	1,362	96658793		
		55 mm	1,603	96658803		
		60 mm	1,927	96658817		
	BQQV	28 mm	274	98434905	1,583	96658828
		38 mm	431	98434908	1,697	96658839
		48 mm	595	98434941	2,524	96658861
		55 mm	861	98434944	2,062	97769929
		60 mm	1,581	98434947	4,440	97769930
	DAQF	28 mm	2,003	96548355	5,573	96658831
		38 mm	2,319	96548359	5,644	96658852
		48 mm	2,485	96658796	5,918	96658863
		55 mm	2,720	96658807	9,614	97536552
		60 mm	2,782	96658820	11,786	97536595
	DQQE	28 mm	3,836	97769895	10,055	97769896
		38 mm	3,890	97769897	11,208	97769898
		48 mm	6,351	97685509	11,877	97685510
		55 mm	11,288	97685596	15,495	97685597
		60 mm	12,671	97685598	16,716	97685599
	DQQV	28 mm	2,116	97769899	11,207	97769900
		38 mm	2,737	97769901	16,577	97769902
		48 mm	3,127	97685511	12,231	97685513
		55 mm	12,673	97685600	18,103	97685601
		60 mm	13,719	97685602	18,103	97685603
		Length	£	Product Code	£	Product Code
Spacer ring for shaft seal	38mm shaft	15.5mm	154	96591277	227	96938601
	28mm shaft	7.5mm	128	96938597	221	96938598
	38mm shaft	10mm	108	96938599	234	96938600
	48mm shaft	15mm	146	96938602	242	96938603
	55mm shaft	22.5mm	157	96938604	312	96938605
	60mm shaft	17.5mm	207	96938606	586	96938607
	38mm shaft	15.5mm	190	96930797	318	96930799
	38mm shaft	10mm	190	96930797	318	96930799

**NB, NK****NB & NK - model B**

		Pump material version: A, B, C, D, E, F, G, H, S, T		
	Dimensions	Material	£	Product Code
	D63/D77x10	Bronze	112	96810098
	D76/D90x10	Bronze	108	96810099
	D90/D104x10	Bronze	115	96810100
	D100/D114x10	Bronze	116	96810102
	D112/D126x10	Bronze	121	96810103
	D122/D136x10	Bronze	146	96810104
	D130/D144x10	Bronze	160	96810106
	D144/D158x15	Bronze	226	96810107
	D154/D168x15	Bronze	220	96797628
	D174/D188x15	Bronze	266	96810108
	D185/D199x15	Bronze	259	96810109
	D200/D214x15	Bronze	296	96810110
	D210/D224x15	Bronze	318	96810111
	D222/D272x15	Brass	804	96939611
	D224/D238x15	Bronze	321	96810112
	D230/D280x15	Brass	1,146	96939612
	D240/D290x15	Brass	1,292	96939613
	D250/D300x15	Brass	1,243	96939614
	D260/D310x15	Brass	1,808	96939615

Wear ring kit

		Pump material version: I, J, K, L, M, N, P, R, U, W		
			£	Product Code
	D63x10	DIN 1.4517	319	97939264
	D76x10	DIN 1.4517	252	96810134
	D90x10	DIN 1.4517	261	96810136
	D100x10	DIN 1.4517	268	96810138
	D112x10	DIN 1.4517	274	96810142
	D122x10	DIN 1.4517	280	96810146
	D130x13	DIN 1.4517	314	96810150
	D154x15	DIN 1.4517	364	96810152
	D144x15	DIN 1.4517	255	96810148
	D185x15	DIN 1.4517	396	96810154
	D174x10	DIN 1.4517	441	97939254
	D200x10	DIN 1.4517	413	97939258
	D210x15	DIN 1.4517	511	96887262
	D224x15	DIN 1.4517	592	97739717

**NK and NB pumps - model B**

**NB, NK****NB & NK - model B**

			£	Product Code
Gasket kit	EPDM (E)	177,39x3,53	75	97757659
		221,84x3,53	42	97757671
		253,6x3,53	46	97757672
		278,99x3,53	47	97757673
		329,79x3,53	49	97757675
		430,66x3,53	87	97757676
		456,06x3,53	49	97757677
		548x6	92	97757679
	FFKM (K)	177,39x3,53	902	97904674
		221,84x3,53	2,986	97904691
		253,6x3,53	2,703	97904677
		278,99x3,53	3,944	96887760
		329,79x3,53	4,169	96887761
		430,66x3,53	5,138	96887762
		548x6,00	12,206	97536606
	FKM (V)	177,39x3,53	65	97757697
		221,84x3,53	62	97757698
		253,6x3,53	87	97757699
		278,99x3,53	74	97757703
		329,79x3,53	92	97757705
		430,66x3,53	122	97757707
		456,06x3,53	147	97757708
		548x6	197	97757712
	HNBR (X)	177,39x3,53	227	97904675
		221,84x3,53	223	97904692
		253,6x3,53	223	97904678
		278,99x3,53	213	96887766
		329,79x3,53	527	96887767
		430,66x3,53	213	96887768
		548x6,00	211	97536609
	FXM (F)	177,39x3,53	434	97790022
		221,84x3,53	1,142	97790080
		253,6x3,53	1,165	97790081
		278,99x3,53	963	96887763
		329,79x3,53	1,215	96887764
		430,66x3,53	1,684	96887765
		456,06x3,53	4,007	97790102
		548x6,00	2,804	97536608



**NB, NK**
**NK - model B**

		£	Product Code
Spacer coupling complete	H80 D24/L100/D14	1,310	96579717
	H80 D24/L100/D19	1,310	96579719
	H80 D24/L100/D24	1,310	96579720
	H80 D24/L140/D24	1,428	96579721
	H80 D24/L100/D28	1,310	96579722
	H80 D24/L140/D28	1,428	96579724
	H95 D24/L100/D38	1,562	96579726
	H95 D24/L100/D42	1,562	96579731
	H95 D24/L140/D42	1,704	96579732
	H110 D24/L100/D48	1,700	96579733
	H110 D24/L140/D48	1,897	96579755
	H125 D24/L100/D55	1,876	96579763
	H125 D24/L140/D55	2,176	96579766
	H80 D32/L140/D24	1,431	96579785
	H80 D32/L140/D28	1,431	96579788
	H95 D32/L140/D38	1,712	96579800
	H95 D32/L140/D42	1,707	96579802
	H110 D32/L140/D48	1,959	96579803
	H125 D32/L140/D55	2,179	96579804
	H140 D32/L140/D60	2,728	96579805
	H160 D32/L140/D65	2,046	96579806
	H80 D24/L140/D19	OBSOLETE	96861578
	H95 D42/L140/D38	1,842	96861607
	H95 D42/L140/D42	1,754	96861609
	H110 D42/L140/D48	1,951	96861611
	H125 D42/L140/D55	2,238	96861613
	H140 D42/L140/D60	2,939	96861615
	H160 D42/L140/D65	3,475	96861617
	H200 D42/L140/D65	5,105	96861618
	H180 D42/L140/D75	4,479	96861623
	H200 D42/L140/D80	5,104	96861626
	H110 D48/L180/D48	2,321	96861631
	H125 D48/L180/D55	2,643	96861632
	H140 D48/L180/D60	3,486	96861633
	H160 D48/L180/D65	4,299	96861634
	H180 D48/L180/D70	5,174	96861636
	H180 D48/L180/D75	5,096	96861638
	H200 D48/L180/D80	5,800	96861640
	H225 D48/L180/D85	7,305	96861641
	H140 D60/L180/D55	3,138	96861646
	H140 D60/L180/D60	3,092	96861647
	H160 D60/L180/D65	3,840	96861648
	H180 D60/L180/D70	5,177	96861650
	H180 D60/L180/D75	5,099	96861651
	H200 D60/L180/D80	5,803	96861653
	H225 D60/L180/D85	7,307	96861654
	H250 D60/L180/D95	9,542	96861657
Coupling rubber parts for Flender spacer coupling	B/H80	91	96480015
	B/H95	107	96480016
	B/H110	122	96480017
	B/H125	112	96480018
	B/H140	161	96480019
	B/H160	196	96480040
	B/H180	258	96796254
	B/H200	279	96796255
	B/H225	319	96796259
	B/H250	384	96796260

SP				
SP1A & SP2A - model A				
			£	Product Code
Wear parts kit		6 stages	140	95054
		7-9 stages	147	55008
		10-15 stages	149	55009
		16-21 stages	178	95056
		22-26 stages	179	55010
		27-33 stages	214	55011
Wear parts kit		31-39 stages	238	105059
		40-48 stages	308	95059
		49-60 stages	378	95060
		61-75 stages	401	95061
		76-90 stages	442	95062
SP3A & SP5A - model A				
			£	Product Code
Wear parts kit	SP	1-6 stages	140	95054
		7-9 stages	147	55008
		10-15 stages	149	55009
		16-21 stages	178	95056
		22-26 stages	179	55010
		27-33 stages	214	55011
Wear parts kit	SP; SP-N	5 stages	OBSOLETE	105543
		6-10 stages	187	105544
		11-15 stages	OBSOLETE	55504
		16-24 stages	237	105546
		25-30 stages	238	105547
		31-39 stages	238	105059
		40-48 stages	308	95059
		49-60 stages	378	95060
		61-75 stages	401	95061
		76-90 stages	442	95062
Wear parts kit	SP-R	5 stages	128	105969
		6-10 stages	132	105970
		11-15 stages	157	105971
		16-24 stages	227	105972
		25-30 stages	198	105973
		31-39 stages	241	105974
		40-48 stages	277	105975
		49-60 stages	324	105976
Wear parts kit	SP-NE	12 stages	229	96440231
		25 stages	269	96440230
		33 stages	334	96440229
		45 stages	433	96440228
		60 stages	465	96440227
SP7 & SP9				
			£	Product Code
Wear parts kit *	SP	1 stage	82	98766923
		2-5 stages	117	98766939
		6-10 stages	108	98766936
		11-25 stages	161	98766941
		26-50 stages	209	98766947

\* The number of stages refers to the wear part kit. For some pump models, more than one wear part kit might be required.

SP						
SP8A - model A						
			£	Product Code		
			before 9444 (yyww)		after 9444 (yyww)	
Wear parts kit	SP SP-R	5-10 stages	OBSOLETE	115046	155	96428935
		12-18 stages	OBSOLETE	115047	211	96428936
		21-25 stages	OBSOLETE	115048	292	96428937
		28-37 stages	OBSOLETE	115103	306	96428938
Wear parts kit	SP-N	5-10 stages	OBSOLETE	115587	155	96428935
		12-18 stages	OBSOLETE	115588	211	96428936
		21-25 stages	OBSOLETE	115589	292	96428937
Wear parts kit	SP-NE	5-10 stages	519	115567	512	96428939
		12-18 stages	776	115568	813	96428940
		21-25 stages	975	115569	1,130	96428941
		26-37 stages	N/A		1,251	96441561
SP11A & SP14A						
					£	Product Code
Wear parts kit	SP	5 stages			234	75008
		7-13 stages			461	75009
		14-18 stages			552	75010
		20-25 stages			772	75011
Wear parts kit	SP -N	5 stages			198	75507
		7-13 stages			431	75508
		14-18 stages			524	75509
		20-25 stages			744	75510
SP11 & SP14						
					£	Product Code
Wear parts kit *	SP	1 stage			89	98766927
		2-5 stages			106	98766933
		6-10 stages			117	98766939
		11-25 stages			150	98766945
* The number of stages refers to the wear part kit. For some pump models, more than one wear part kit might be required.						
SP17 - model A						
					£	Product Code
Wear parts kit	SP; SP-N; SP-R	1-5 stages			374	96421723
		6-16 stages			488	96421724
		17-26 stages			634	96421725
		27-40 stages			918	96440238
		up to 50 stages			895	96488045
		up to 60 stages			830	96488046
Impeller with split cone and nut	SP SP -N SP -R			104	97506595	
				107	96903203	
				146	96903204	
Split cone and nut	SP SP -N SP -R			150	97508279	
				63	96901911	
				56	96901953	
Split cone with stop nut	SP SP -N SP -R			144	97508314	
				65	96901960	
				64	96901961	
SP17 - model B						
			Standard bearings		Wear resistant bearings	
			£	Product Code	£	Product Code
Wear parts kit	SP; SP-N; SP-R	1-5 stages	412	97945520	402	98098277
		6-12 stages	491	97945521	563	98098278
		13-19 stages	564	97937872	614	98098279
		20-30 stages	522	97937873	640	98098280
		31-40 stages	626	97937874	783	98098311
		41-50 stages	661	97937875	923	98098312
		51-60 stages	751	97937876	1,061	98098313

SP					
SP30 - model A					
			£	Product Code	
Wear parts kit	SP; SP-N; SP-R	1-5 stages	271	96421732	
		6-16 stages	478	96421733	
		17-27 stages	588	96421734	
		28-39 stages	838	96440246	
		40-54 stages	1,085	96488047	
Impeller with split cone and nut		SP	72	97506691	
		SP -N	104	96903205	
		SP -R	164	96903206	
Split cone and nut		SP	84	97509658	
		SP -N	63	96901972	
		SP -R	73	96901973	
Split cone with stop nut		SP	106	97509673	
		SP -N	87	96901980	
		SP -R	111	96901981	
SP30 - model B					
		Standard bearings		Wear resistant bearings	
		£	Product Code	£	Product Code
Wear parts kit	SP; SP-N; SP-R	1-5 stages	342	386	98098314
		6-15 stages	488	621	98098315
		16-27 stages	675	824	98098316
		28-39 stages	832	1,056	98098317
		40-54 stages	931	1,341	98098318
SP46 - model A					
			£	Product Code	
Wear parts kit	SP; SP-N; SP-R	1-6 stages	526	96440248	
		7-10 stages	605	96440250	
		11-16 stages	718	96440252	
		17-24 stages	865	96440254	
		25-37 stages	780	96488048	
SP46 - model B					
		Standard bearings		Wear resistant bearings	
		£	Product Code	£	Product Code
Wear parts kit	SP; SP-N; SP-R	1-6 stages	414	424	98098319
		7-12 stages	518	624	98098320
		13-18 stages	617	702	98098321
		19-24 stages	716	838	98098322
		25-37 stages	833	1,115	98098323
SP60 - model A					
			£	Product Code	
Wear parts kit	SP; SP-N; SP-R	1-6 stages	707	96440369	
		7-10 stages	869	96440371	
		11-16 stages	986	96440373	
		17-22 stages	1,178	96440375	
		23-30 stages	1,202	96488049	
SP60 - model B					
		Standard bearings		Wear resistant bearings	
		£	Product Code	£	Product Code
Wear parts kit	SP; SP-N; SP-R	1-6 stages	408	421	98098324
		7-12 stages	512	562	98098325
		13-18 stages	612	699	98098326
		19-24 stages	648	834	98098327
		25-30 stages	710	962	98098328

SP				
SP77 - model C				
			£	Product Code
Wear parts kit	SP; SP-N; SP-R	1-8 stages	560	96440256
		9-14 stages	714	96440258
		15-22 stages	925	96440260
SP95 - model B				
			£	Product Code
Wear parts kit	SP; SP-N; SP-R	1-8 stages	710	96440715
		9-14 stages	864	96440716
		15-20 stages	881	96440717
SP125 - model C & D				
			£	Product Code
Wear parts kit	SP; SP-N; SP-R	1-4 stages	399	96440262
		5-6 stages	526	96440264
		7-10 stages	618	96440266
		11-17 stages	610	96488080
Impeller		SP	202	97506694
		SP -N	215	96903234
		SP -R	573	96903235
Reduced impeller		SP	179	97506727
		SP -N	225	96907105
		SP -R	571	96907107
Split cone with nut		SP	109	96903149
		SP -N	109	96903149
		SP -R	127	96903172
SP160 - model A & B				
			£	Product Code
Wear parts kit	SP; SP-N; SP-R	1-5 stages	502	205117
		6-9 stages	816	205118
		10-15 stages	580	96488081
Impeller		SP	212	97508270
		SP -N	192	96903236
		SP -R	592	96903237
Reduced impeller		SP	197	97508275
		SP -N	227	96907108
		SP -R	OBSOLETE	96907109
Split cone with nut		SP	109	96903149
		SP -N	109	96903149
		SP -R	127	96903172
SP215 - model B & C				
			£	Product Code
Wear parts kit	SP; SP-N; SP-R	1-2 stages	466	185033
		3-4 stages	539	185034
		5-7 stages	795	185035
		8-11 stages	890	185036
Impeller		SP	239	97508277
		SP -N	292	96903238
		SP -R	432	96903239
Reduced impeller		SP	271	97508278
		SP -N	372	96907110
		SP -R	431	96907111
Split cone with nut		SP	173	97524682
		SP -N	157	96903175
		SP -R	257	96903176

**MS, MMS, SQ, SQE****SP 4" MOTOR CABLE**

		£	Product Code
MS402 cable, 4G 1.5mm <sup>2</sup> , 1.7m	plug connection one end	130	95920882
MS4000 Cable, 4G 1.5mm <sup>2</sup> , 1.7m	plug connection both ends	137	95920909
MS4000 cable, 4G 1.5mm <sup>2</sup> , 1.7m	plug connection one end	93	95920889
MS4000 cable R, 3x1x AWG14,	plug connection both ends	204	95920942

**SP 6" MOTOR CABLE**

		£	Product Code
MS6000 cable, 4 G 6mm <sup>2</sup> , 5m		238	95920945
MS6 Cable 3 x 4 + 1 G 4mm <sup>2</sup> , 5m 5.5 - 9.2 kw		OBSOLETE	96163690
MS6 Cable 3 x AWG 8 + 1 G AWG 8, 5m 11kw - 30kw		OBSOLETE	96163691

Motor cables for SP pumps please call with pump / motor details, have different connections on motors

**SQ, SQE - model B**

				£	Product Code
Wear part kit	SQ(E)-N1-35 to 95			365	96479862
	SQ(E)-N1-110 to 155			588	96479864
	SQ(E)-N2- 35 to 70			326	96479866
	SQ(E)-N2- 85 to 130			450	96479868
	SQ(E)-NE2- 35 to 65			652	96439551
	SQ(E)-NE2- 75 to 115			1,159	96439552
	SQ(E)-N3- 30 to 55			326	96479869
	SQ(E)-N3- 65 to 105			454	96479870
	SQ(E)-N5 15 to 35			335	96479871
	SQ(E)-N5 50 to 70			465	96479873
	SQ(E)-NE5 15 to 35			682	96439560
SQ(E)-NE5 45 to 65			1,148	96439561	
SQ(E)-N7 15 to 55			333	96479874	
Valve casing complete	Standard			193	96427517
	NE			293	96439570
Motor cable model B	Standard	1.5 m	3x1.5 mm <sup>2</sup>	82	96160869
		5 m	3x1.5 mm <sup>2</sup>	OBSOLETE	96160870
		10 m	3x1.5 mm <sup>2</sup>	OBSOLETE	96160871
	NE	1.5 m	3x12 AWG	197	96160882
		5 m	3x12 AWG	OBSOLETE	96160883
		10 m	3x12 AWG	OBSOLETE	96160884



**SQ pump**

## BOOSTERS SPARES

### HYDRO 2000

	£	Product Code
PFU 2000/4 TIL MS, MSH (STANDARD PUMPS)	OBSOLETE	625234
PFU 2000/9 TIL MF,MFH,ME,MEH,MES(E PUMPS)	3,238	625243
PFU 2000 EPROM MS (FIXED)	SPECIAL ORDER ONLY	96591305
PFU 2000 EPROM ME (VARIABLE SPEED)	SPECIAL ORDER ONLY	96591307

### HOME BOOSTER

	£	Product Code
Pump CM 3-4 l for 3.5 Bar	822	96934524
Pump CM 3-6 l for 4.5 Bar	993	96959353
PM2 Controller	294	96848740
8 Litre Pressure Vessel	91	96526321
Automatic Air Vent, Brass WRAS	59	97909984
22mm JG Plastic Service Valve	59	97563994
Ballcock & Overflow (Mains Inlet) Kit	264	97939412
Internal Hoses Kit (both models)	339	97939421

### MINI MONOPRESS

	£	Product Code
SOLENOID PUMP ET508LA	OBSOLETE	GBOP0001
PIPE KIT-MINI MONOPRESS WITHOUT HIGH/LOW	114	98155765
PIPE KIT-MINI MONOPRESS C/W HIGH/LOW P.S	158	98155768
PIPE KIT-MINI DUOPRESS C/W HIGH/LOW P.S	OBSOLETE	98155769
WIRE KIT-MINI MONOPRESS WITHOUT HIGH/LOW	OBSOLETE	98155781
WIRE KIT-MINI MONOPRESS C/W HIGH/LOW P.S	OBSOLETE	98155784
WIRE KIT-MINI DUOPRESS C/W HIGH/LOW P.S	OBSOLETE	98155787

### IMPRESS

	£	Product Code
Pressure sensor RPS 0-10bar complete with fittings and 1.2m cable	OBSOLETE	96625387
Cabinet panel cpl. (programmed)	OBSOLETE	98431258
Cabinet top and front panels	445	98675080
STD Control Panel 1 Pump	2,462	96982873
ADV Control Panel 1 Pump	OBSOLETE	96982872
ADV Control Panel 2 Pump	2,950	97549894
STD PLC Controller (programmed)	310	97773064
ADV PLC Controller (programmed)	504	97773065
Power Supply Unit	156	98674679
Touch-screen STD (programmed)	OBSOLETE	97924046
Touch-screen ADV (programmed)	1,369	97924045
Hoses kit	31	98675140
Single Pump Manifold	360	98675157
Dual Pump Manifold	475	98675158
Non-return valve 1/2" MI / 1/2" FI CIM32	24	GBNR0013
Low pressure switch XP73B642	139	GBPS2202
Control pressure switch BARKSDALE	OBSOLETE	GBPS2201
Float switch	107	GBPS0070

### PRESSURE SWITCHES

	£	Product Code
KPI 35 PRESSURE SWITCH ( -0.2 - 8 BAR was Sopac )	278	GBPS0010
Press. switch. Telemechanique, 1 ph /sp	OBSOLETE	96578668

### MISCELLANEOUS

	£	Product Code
Transducer 6 bar	OBSOLETE	GBTD0006
Transducer 10 bar	345	GBTD0010

### BOOSTERS

	£	Product Code
Transducer 0-4 bar	150	99257373
Transducer 0-10 bar	150	99257835
Pressure Gauge	114	99327758
Booster Cable	67	99257837

# MOTORS

## MG

			£	Product Code
Bearing kit	6204.SYN/6201.SYN		44	96279730
	6304.SYN/6201.SYN		44	96279741
	6305.SYN/6205.SYN		55	96279794
	6306.SYN/6205.SYN		63	96279795
	6306.SYN/6206.SYN		72	96279796
	6308.SYN/6206.SYN		87	96279797
	7306.BE.SYN/6206.SYN		111	96279802
	7308.BE.SYN/6206.SYN		137	96279803
	6308.SYN/6206.SYN		103	96796600
	7308.BE.SYN/6206.SYN		139	96796642
	6309.Z.C4/6309.Z.C4		160	96796674
	7309.BE/6309.Z.C4		180	96796676
	6310.Z.C4/6310.Z.C4		181	96796811
	7310.BE/6310.Z.C4		190	96796812
	6308.SYN/7306.BE_SF		139	96830797
Shaft seal	MG 132 model F/H	V-ring (IP 55)	42	96843458
	MG 132 model F/H	Gamma ring (IP 66)	64	96796191
	MG 160	V-ring (IP 55)	64	96843459
	MG 160	Gamma ring (IP 66)	64	96796191
	MG 180	V-ring (IP 55)	71	96843460
	MG 180	Gamma ring (IP 66)	106	96796802
Terminal board	MG 132 model F/H, MG 160, MG 180		64	96796657
Terminal box cover	MG 132 model F/H		58	96279772
	MG 160, MG 180		98	96796659
Fan	MG 132 model F/H	Ø 128 mm	42	96796189
	MG 132 model F/H	Ø 158 mm	42	96796190
	MG 160	Ø 210 mm CW	89	96796654
	MG 160	Ø 215 mm CW	64	96796650
	MG 160	Ø 210 mm CCW	64	96796648
	MG 160	Ø 215 mm CCW	89	96796652
	MG 180	Ø 240 mm CW	76	96796790
	MG 180	Ø 270 mm CW	106	96796791
	MG 180	Ø 240 mm CCW	76	96796716
	MG 180	Ø 270 mm CCW	106	96796718
Grease nipple	MG 132 model F/H, MG 160, MG 180		51	96796671
Bearing cover	MG 160		51	96796664



MG motors



## MOTORS

### MGE - Model H, I and J

			£	Product Code
Ball bearing kit	6204.SYN/6204.SYN		76	98330603
	6304.SYN/6204.SYN		81	98330604
	6305.SYN/6204.SYN		86	98330605
	6306.SYN/6204.SYN		89	98330606
	6204.HYB/6204.HYB		242	98330608
	6304.HYB/6204.HYB		420	98330609
	6305.HYB/6204.HYB		402	98330610
	6306.HYB/6204.HYB		412	98330611
	6305.2Z.C3.SYN+6205		47	98881507
	6306.2Z.C3.SYN+6205		48	98881508
	6306.2Z.C3.SYN+6206		71	98881509
	6308.2Z.C3.SYN+6206		88	98881510
	6308.2Z.C3.SYN+6306		130	99124389
	6308.2Z.C3.SYN+6206		83	98881521
	6309.Z.C3+6306		101	98881522
	6207.2Z.C3+6205		63	98881523
	7306+6206		122	98881524
	7308+6206		136	98881525
	6308+6306		106	99099338
	7309+6306		127	98881526
	6306.2Z.C3.SYN+7306		121	98881527
	6308.2Z.C3.SYN+7306		143	98881528
	6309.Z.C3+7306		114	98881529
	6309.2Z.C3+6306		192	99177551
Hybrid ball bearing kit	6305.2Z.C3.SYN+6205		433	98881530
	6306.2Z.C3.SYN+6205		433	98881531
	6306.2Z.C3.SYN+6206		455	98881532
	6308.2Z.C3.SYN+6206		698	98881533
	6308.2Z.C3.SYN+6206		691	98881534
	6308+6306		669	99124391
	7306+6206		1,328	98881537
	7308+6206		862	98881538
	6306.2Z.C3.SYN+7306		994	98881540
	6308.2Z.C3.SYN+730		1,240	98881541
	6309.Z.C3+7306		2,743	98881542
7309+6306		1,427	99123455	
Blanking plug, kit	Small		52	99052475
	Large		57	99052476
Shaft seal	MGE 71/80		49	98334779
	MGE 90		40	98334780
Cable glands	1xD7-14 & 2xD5		51	98337336
	1xD7-14 & 4xD5		OBSOLETE	98337337
	1xD7-14 & 6xD5		58	98337338
	10xD7-14		67	98337339
	10xD5 single entry		63	98337340
	10xD5 double entry		74	98337341
Cable glands adapter			83	98345796
Connector plugs			83	98403113
Cover for CIM			19	98330622
Fan	1500-2000 rpm	all models	83	98290123
	2900-4000 rpm	≤ 1.1kW	83	98290123
	2900-4000 rpm	> 1.1kW	83	98290124
	4000-5900 rpm	all models	83	98290123
Fan cover		all models	OBSOLETE	98330566

### MGE - Model F

		£	Product Code
Connector plugs		67	96348923
TPED add-on card		429	96348931
Terminal box	11 kW	6,542	96348913
	15 to 22 kW	9,183	96348914

## Notes

## CONDITIONS OF SALE AND SERVICE

The Customer's attention is particularly drawn to the provisions of condition 13 (Warranty and Limitation of Liability)

### 1. INTERPRETATION

- 1.1 The definitions and rules of interpretation in this condition apply in these Conditions.

**Agreement:** the contract between Grundfos and the Customer for the supply of Equipment and/or Services in accordance with the Order and these Conditions  
**Business Day:** a day other than a Saturday, Sunday or bank or public holiday in England when banks in London are open for non-automated business.

CDM Regulations: the Construction (Design and Management) Regulations 2015  
**Conditions:** these terms and conditions as amended from time to time in accordance with condition 19.

**Customer:** the person, firm or company who purchases Equipment and/or Services from Grundfos.

**Data Protection Legislation:** all legislation and regulatory requirements in force from time to time relating to the use of personal data and the privacy of electronic communications, including, without limitation (i) any data protection legislation from time to time in force in the UK including the Data Protection Act 2018 or any successor legislation, as well as (ii) the General Data Protection Regulation (EU) 2016/679 and any other directly applicable European Union regulation relating to data protection and privacy (for so long as and to the extent that the law of the European Union has legal effect in the UK).

**Delivery Location:** the location set out in the Order for delivery of the Equipment and/or Services or such other location as the parties may agree.

**Equipment:** all equipment, materials, goods and/or products, or any part or parts thereof, supplied by Grundfos to the Customer under this Agreement or used by Grundfos or its subcontractors in the supply of the Services.

**Equipment Specification:** any specification for the Equipment, including any relevant plans or drawings, that is agreed in writing by the Customer and Grundfos.

**Event of Default:** any occurrence of the events set out in condition 17.1 or 17.2.

**Force Majeure Event:** acts, events, omissions or accidents beyond its reasonable control, including (without limitation) strikes, lock-outs or other industrial disputes (whether involving any supplier, contractor or agent of Grundfos or any other party beyond its reasonable control), failure of a utility service or transport network, act of God, war or threat of war, sabotage, riot, civil commotion, malicious damage, compliance with any law or governmental order, rule, regulation or direction, import or export embargoes, accident, breakdown of plant or machinery, fire, flood, storm or default of suppliers or subcontractors, difficulties in obtaining raw materials, labour, fuel, parts or machinery.

**Grundfos:** Grundfos Pumps Limited (Company No: 00805960) whose registered office is at Grovebury Road, Leighton Buzzard, Bedfordshire LU7 4TL.

**Health and Safety File:** the health and safety file required by the CDM Regulations.

**In-put Material:** all documents, information, tools and materials of the Customer required by Grundfos for the proper provision of the Services.

**Intellectual Property Rights:** patents, rights to inventions, copyright and related rights, trade marks, business names and domain names, rights in get-up, goodwill and the right to sue for passing off, rights in designs, database rights, rights to use, and protect the confidentiality of, confidential information (including know-how), and all other intellectual property rights, in each case whether registered or unregistered and including all applications and rights to apply for and be granted, renewals or extensions of, and rights to claim priority from, such rights and all similar or equivalent rights or forms of protection which subsist or will subsist now or in the future in any part of the world.

**Maintenance Schedule:** the maintenance schedule attached to the Order setting out the Services to be supplied by Grundfos to the Customer.

Order: the service support agreement or site visit request form in each case on Grundfos' standard terms (whichever is applicable) including any schedules attached to the service support agreement or site visit request form.

**Payment Schedule:** the payment schedule attached to the Order setting out the charges applicable for the provision of the Services by Grundfos to the Customer.

**Premium Service:** the service package in accordance with Grundfos' terms as set out in the Agreement.

Quotation: a written quotation issued by Grundfos.

**Services:** the services to be provided by Grundfos under this Agreement as set out in the Order or site visit request form together with any other services which Grundfos provides, or agrees to provide, to the Customer.

**Site visit request form:** Grundfos' Site Visit and Commissioning Request Form, or the equivalent internet log, which the Customer completes.

Time and Materials Rate: the rates set out in the Order.

**Warranty:** (Subject to condition 5.5) the warranty provided by Grundfos in respect of the Services as set out in condition 8.4 and Equipment as set out in condition 5.1 of these Conditions (as applicable).

**Warranty Period:** for product codes UPS2, UPS3, ALPHA1, ALPHA2, ALPHA3 and SCALIA2 the warranty period shall be 5 years from the date of the manufacture and in all other cases the warranty period shall be 24 months from installation or 30 months from the date of manufacture (whichever expires soonest).

- 1.2 Headings in these conditions shall not affect their interpretation.

- 1.3 A person includes a natural person, corporate or unincorporated body (whether or not having separate legal personality).

- 1.4 The schedules and annexes form part of this Agreement.

- 1.5 A reference to writing or written includes fax and email and electronic chat messages.

- 1.6 Any obligation in this Agreement on a person not to do something includes, without limitation, an obligation not to agree, allow, permit or acquiesce in that thing being done.

- 1.7 References to schedules and annexes are to the schedules and annexes of the Order.

- 1.8 A reference to a statute or statutory provision is a reference to it as amended or re-enacted. A reference to a statutory provision includes all subordinate legislation made under that statute or statutory provision.

### 2. Basis of Agreement

- 2.1 The Order constitutes an offer by the Customer to purchase Equipment and/or Services in accordance with these Conditions.

- 2.2 The Order shall only be deemed to be accepted on the earlier of:

(a) an authorised representative of Grundfos issues written acceptance of the Order; or

(b) Grundfos delivers the Equipment and/or commences providing Services to the Customer in line with the Order, at which point and on which the date this Agreement shall come into existence.

- 2.3 Any samples, drawings, descriptive matter or advertising issued by Grundfos and any descriptions of the Equipment or illustrations or descriptions of the Services contained in Grundfos' catalogues or brochures are issued or published for the sole purpose of giving an approximate idea of the Services and/or Equipment described in them.

No warranty or guarantee is given for their accuracy and they shall not form part of this Agreement or have any contractual force.

- 2.4 These Conditions shall:

(a) apply to and be incorporated into this Agreement;

(b) prevail over any other terms that the Customer seeks to impose or incorporate; and

(c) prevail over any terms or conditions implied by law, trade custom, practice or course of dealing between Grundfos, the Customer or otherwise.

- 2.5 These Conditions are subject to any terms, conditions and/or provisions set out in the Order. In the event of any conflict between the terms of these Conditions and the terms of the Order, the provisions of the Order shall prevail, but any special terms granted in respect of any one Order are not applicable to any subsequent Order without the express consent in writing by Grundfos.

- 2.6 Quotations shall only be valid if issued in writing.

- 2.7 Any Quotations are given on the basis that no Agreement shall come into existence except in accordance with condition 2.2. Any Quotation is valid for a period of 30 days from its date (unless otherwise agreed by Grundfos), provided that Grundfos has not previously withdrawn it.

- 2.8 All of these Conditions shall apply to the supply of both Equipment and Services except where application to one or the other is specified.

- 2.9 Any special terms agreed to by Grundfos for any Order shall not apply to any subsequent Order without the express agreement of an authorised representative of Grundfos.

- 2.10 The Customer is responsible for ensuring the accuracy of the terms of the Order and for providing to Grundfos in good time any necessary information required by Grundfos to enable Grundfos to perform its obligations under the Agreement.

- 2.11 Grundfos' minimum order value is £55.00. Orders between £55.00 and £335 for pumps or £130 for Category 4 items will be subject to a £37 handling fee.

### 3. Equipment

- 3.1 The Equipment is described in Grundfos' catalogues as modified in any Equipment Specification.

- 3.2 Unless confirmed in writing by Grundfos, Grundfos makes no representation as to the suitability of the Equipment for the Customer's particular purpose. The Customer will be responsible for ensuring that the Equipment is suitable for its particular purpose and Grundfos shall have no liability to the Customer if the Equipment is not suitable for the Customer's particular purpose (so far as legally possible).

- 3.3 Grundfos (and/or its subcontractors, suppliers or agents) reserves the right to:

(a) change the design, construction or composition of the Equipment or the materials or equipment used in the Equipment as it shall think fit; and  
(b) amend the Equipment Specification of the Equipment if required by any applicable statutory requirements, and shall, in any case, notify the Customer of any such changes (if such changes are effected after this Agreement has come into existence but before the Equipment and/or Services have been fully performed).

- 3.4 Samples of Equipment are available for inspection at Grundfos' offices. The samples are ex-stock at the time of viewing and are without guarantee as to colour or dimensions at the time of delivery. The viewing of a sample does not create a sale by sample.

### 4. Delivery of Equipment

- 4.1 Grundfos shall deliver the Equipment to the Delivery Location.

- 4.2 Delivery of the Equipment shall be completed on:

(a) the completion of unloading of the Equipment at the Delivery Location or (in the absence of any specified Delivery Location by the Customer) upon Grundfos informing the Customer that the Equipment is ready; or

(b) (if the Customer or its agents and/or representatives elect to unload the Equipment themselves) upon Grundfos placing the Equipment at the disposal of the Customer, its agents or representatives at the agreed point.

- 4.3 Grundfos' obligation under condition 4.1 is limited to delivering the Equipment only as near to the Delivery Location as a safe hard road permits. The Customer is to provide to Grundfos, free of charge, reasonable assistance with unloading (unless the Customer elects to unload the Equipment itself).

- 4.4 Any dates quoted for delivery of the Equipment are approximate only, and the time of delivery is not of the essence. Grundfos shall not be liable for any delay (or any additional costs arising out of the delay) in delivery of the Equipment that is caused by a Force Majeure Event or the Customer's failure to provide Grundfos with adequate delivery instructions or any other instructions that are relevant to the supply of the Equipment.

- 4.5 The Equipment may be delivered in advance of the quoted delivery date upon giving reasonable notice to the Customer.

- 4.6 If the Customer fails to take delivery of the Equipment or fails to give Grundfos adequate delivery instructions at the time stated for delivery (otherwise than by reason of Grundfos' sole fault) then, without prejudice to any other right or remedy available to Grundfos:

(a) delivery of the Equipment shall be deemed to have been completed at 9.00am on the next Business Day following the day on which Grundfos notified the Customer that the Equipment was ready; and

(b) Grundfos may:

(i) Charge a re-delivery fee if delivery is rearranged by Grundfos and the Customer;

(ii) store the Equipment until actual delivery takes place, and charge the Customer for all related costs and expenses (including insurance) of such storage;

(iii) apply Grundfos' returns policy as set out in condition 6; or

(iv) sell the Equipment at the best price readily obtainable and (after deducting all reasonable storage and selling expenses) charge the Customer for any shortfall below the price payable by the Customer for the Equipment and Services (as applicable) under this Agreement.

- 4.7 If the parties have agreed on express delivery, the dates quoted for such delivery and agreed delivery dates are approximate only as delivery may vary due to factors not within Grundfos' reasonable control, e.g. leisurely or delayed customs clearance or other import or export obstacles. The parties agree that time of delivery is not of the essence and that Grundfos shall not be liable for any delay (or any additional costs arising out of the delay) in delivery caused by such events.

- 4.8 Grundfos may deliver the Equipment by instalments.

- 4.9 If Equipment is not received by the customer within 7 days of notification of dispatch by Grundfos or if it is received in a damaged condition or the quantity received differs from the quantity advised by Grundfos the Customer shall notify Grundfos in writing. If such written notice is not received by Grundfos within 10 days of the date of Grundfos' dispatch notification, Grundfos will not be liable in respect of any loss or damaged suffered.

- 4.10 If a proof of delivery is required a £10 handling fee will apply.

- 4.11 Proof of delivery shall only be retained by Grundfos for 3 months following delivery. After 3 months it shall be assumed by both parties that delivery successfully took place unless there is evidence to the contrary.

- 4.12 A £20 handling fee will apply per order to all orders for spares, pump components, spares kits and ancillary items such as flanges, unions etc.

5. **Quality of Equipment**
- 5.1 For the duration of the Warranty Period, Grundfos warrants that the Equipment shall:
- (a) (subject to conditions 5.3 and 5.4) conform in all material respects with the Equipment Specification; and
- (b) be free from defects in design, material and workmanship.
- 5.2 Subject to condition 5.3, if:
- (a) the Customer gives notice in writing during the Warranty Period within 14 days of discovery that some or all of the Equipment does not comply with the Warranty set out in condition 5.1;
- (b) Grundfos is given a reasonable opportunity to examine such Equipment; and
- (c) the Customer (if reasonably asked to do so by Grundfos) returns such Equipment to Grundfos (at Grundfos' cost), then Grundfos shall, at its option, repair or replace the defective Equipment, or refund the price of the defective Equipment in full. Repairs shall only be carried out between 8am and 5pm on Business Days agreed between Grundfos and Customer.
- 5.3 Grundfos shall not be liable for the Equipment's failure to comply with the Warranty if:
- (a) the Customer makes any further use of such Equipment after giving a notice in accordance with condition 5.2 unless otherwise approved by Grundfos (such approval not to be withheld unreasonably);
- (b) the defect arises because the Customer failed to follow Grundfos' or manufacturer's oral or written instructions as to the storage, installation, commissioning, use or maintenance of the Equipment or (if there are none) good trade practice;
- (c) the defect arises as a result of Grundfos following any drawing, design supplied by the Customer or the Equipment Specification;
- (d) the Customer alters, dismantles or repairs such Equipment without the written consent of Grundfos;
- (e) the defect arises as a result of fair wear and tear, wilful damage, negligence, or abnormal working conditions; or
- (f) the Equipment differs from its description as a result of changes made to ensure they comply with applicable statutory or regulatory standards.
- 5.4 Except as provided in this condition 5, Grundfos shall have no liability to the Customer in respect of the Equipment's failure to comply with the Warranty.
- 5.5 The terms of these Conditions shall apply to any repaired or replacement Equipment supplied by Grundfos under condition 5.2 but for the avoidance of doubt, the Warranty Period for any repaired or replaced Equipment shall be 12 months from the date of the repair.
6. **Return of Equipment**
- 6.1 Equipment may not be returned to Grundfos except by the prior written permission of an authorised representative of Grundfos. Contact grundfos-uk@sales.grundfos.com with the original purchase order number to arrange a return. Any such return shall be liable for any handling and restocking fees charged by Grundfos.
- 6.2 All Equipment requested to be returned to Grundfos will be subject to a minimum 35% restocking fee (subject to inspection). Equipment must be returned in its original packaging.
- 6.3 Equipment can only be returned within 6 months of the date of dispatch by Grundfos. All returns will be subject to inspection to ascertain age, condition and type.
- 6.4 Equipment returned without prior authorisation will be refused delivery by Grundfos.
- 6.5 The following Equipment cannot be returned for credit in any circumstance:
- (a) items with a net value of less than £125 (per item);
- (b) repair kits, power cable, engineered to order, third party sourced and obsolete items.
- 6.6 Any Equipment that has been in contact with hazardous liquids must be cleaned, sealed in appropriate packaging, clearly labelled and accompanied by a COSHH certification by the Customer. Any carrier used must be licensed to carry to transport the relevant hazardous liquids.
7. **Title and Risk**
- 7.1 The risk in the Equipment shall pass to the Customer on completion of delivery in accordance with condition 4.
- 7.2 Title to the Equipment shall not pass to the Customer until Grundfos receives payment in full (in cash or cleared funds) for the Equipment and any other equipment or goods that Grundfos has supplied to the Customer in respect of which payment has become due in which case title to the Equipment shall pass at the time of payment of all such sums.
- 7.3 Until title to the Equipment has passed to the Customer, the Customer shall:
- (a) hold the Equipment (or any receipts received from the Customer where the Customer has sold the Equipment) on a fiduciary basis as Grundfos' bailee;
- (b) store the Equipment separately from all other goods held by the Customer (where possible) so that they remain readily identifiable as Grundfos' property;
- (c) not remove, deface or obscure any identifying mark or packaging on or relating to the Equipment (unless reasonably required for the functioning use of the Equipment by the Customer);
- (d) maintain the Equipment in satisfactory condition and keep it insured against all risks for their full price on Grundfos' behalf from the date of delivery;
- (e) notify Grundfos immediately if the Customer becomes subject to any Event of Default;
- (f) give Grundfos such reasonable information relating to the Equipment as Grundfos may require from time to time;
- (g) give Grundfos at least 30 days' notice of its intention to move or relocate the Equipment to a new location. Grundfos may (at Grundfos' sole discretion) supervise the dismantling and removal of the Equipment, and inspect and reinstall the Equipment at the new location. Any supervision and work undertaken in respect of the relocation shall be charged at the prevailing Time and Material Rates and is payable by the Customer in accordance with condition 11; and
- (h) give Grundfos at least 14 days' notice of its intention to take any steps to appoint an administrator.
- 7.4 The Customer may incorporate the Equipment into or with any other goods provided that any new goods incorporating the Equipment shall become the sole and exclusive property of Grundfos and shall be separately stored and marked so as to be identifiable as being manufactured by or containing Equipment belonging to Grundfos.
- 7.5 Subject to condition 7.7, the Customer may resell the Equipment in the ordinary course of its business (but not otherwise) before Grundfos receives payment for the Equipment. However, if the Customer resells the Equipment before that time:
- (a) It does so as principal and not as Grundfos' agent;
- (b) Title to the Equipment shall pass from Grundfos to the Customer immediately before the time at which resale by the Customer occurs.
- 7.6 If before title to the Equipment passes to the Customer the Customer becomes subject to an Event of Default, then, without limiting any other right or remedy Grundfos may have, Grundfos may at any time:
- (a) the Customer's right to resell the Equipment or use it in the ordinary course of its business ceases immediately;
- (b) reasonably require the Customer to deliver up all Equipment in its possession; and
- (c) if the Customer fails to do so promptly, enter any premises of the Customer where the Equipment is stored in order to recover them; and
- (d) the Customer shall pay Grundfos' reasonable costs (including legal costs) for any recovery of the Equipment pursuant to condition 7.7(c).
8. **Supply of Services**
- 8.1 Grundfos shall provide the Services to the Customer in accordance with the Maintenance Schedule in all material respects and in accordance with the duration and timescales specified in the Order.
- 8.2 Grundfos shall use all reasonable endeavours to meet any performance dates for the Services specified in this Agreement, but any such dates shall be estimates only and time shall not be of the essence for the performance of the Services.
- 8.3 Grundfos shall have the right to make any changes to the Services which are necessary to comply with any applicable law or safety requirement, or which do not materially affect the nature or quality of the Services, and Grundfos shall notify the Customer in any such event. If Grundfos requests a change for any other reason, the Customer shall not unreasonably withhold or delay consent to it.
- 8.4 Grundfos warrants to the Customer that the Services will be provided using reasonable care and skill.
- 8.5 Grundfos shall use reasonable endeavours to observe all health and safety rules and regulations, and any other reasonable security requirements that apply at the Customer's premises and that have been communicated to it provided that it shall not be liable under this Agreement if, as a result of such observation, it is in breach of any of its obligations under this Agreement.
9. **Maintenance Service Times**
- 9.1 Services will be carried out during the working times as specified in the Maintenance Schedule.
- 9.2 Grundfos' standard daily fee rates for each individual person are calculated on the basis of an eight-hour day between 8.00am and 5.00pm on Business Days. Grundfos shall be entitled to charge for any Services undertaken outside of these hours at the Time and Materials Rate in effect at the relevant time.
- 9.3 Grundfos shall use reasonable endeavours to attend the Delivery Location, but if Grundfos is prevented by any reason outside his control or under the control of the Customer, from installing the Equipment or carrying out the Services at the time of the visit, it shall not constitute a material breach of this Agreement. If additional visits are required to the Delivery Location which are not accounted for in the Maintenance Schedule, Grundfos reserves the right to charge the Customer at the Time and Materials Rate for all additional time incurred.
10. **Customer's obligations**
- 10.1 The Customer shall:
- (a) ensure that the terms of the Order and the Equipment Specification are complete and accurate;
- (b) co-operate with Grundfos in all matters relating to this Agreement;
- (c) provide Grundfos, its employees, agents, consultants and subcontractors, with access to the Customer's premises, office accommodation and other facilities as reasonably required by Grundfos to provide the Services and/or deliver the Equipment;
- (d) prepare the Customer's premises (or the location where the Services are to be performed) for the supply of the Services and/or the Equipment;
- (e) provide adequate lighting, heating, power and ventilation as per Grundfos' reasonable requirements;
- (f) inform Grundfos' engineer or representative on each visit about any unsatisfactory running or irregular performance of the Equipment or equipment in respect of which the Services are undertaken.
- (g) ensure the Equipment is installed and kept in suitable premises and under suitable conditions, permit only trained and competent personnel to use it and follow any operating instructions as Grundfos may give from time to time;
- (h) provide a site visit request form to Grundfos in respect of any Services to be carried out by Grundfos, its agents, subcontractors, consultants or employees (as the case may be);
- (i) provide to Grundfos, in a timely manner, such In-put Material and other information as Grundfos may require and ensure that it is accurate in all material respects;
- (j) be responsible (at its own cost) for preparing and maintaining the relevant premises for the supply of the Services and/or Equipment, including identifying, monitoring, removing and disposing of any hazardous materials from its premises in accordance with all applicable laws, before and during the supply of the Services and/or Equipment at those premises;
- (k) inform Grundfos of all health and safety rules and regulations and any other reasonable security requirements that apply at the Customer's premises;
- (l) ensure that all In-Put Materials are in good working order and suitable for the purposes for which it is used in relation to the Services;
- (m) keep all Grundfos' materials, equipment, documents and other property (Grundfos Property) at the Customer's premises in safe custody at its own risk, keep all Grundfos Property in good condition until returned to Grundfos and not dispose of or use the Grundfos Property other than in accordance with Grundfos' written instructions and authorisations; and
- (n) obtain and maintain all necessary licences and consents and comply with all relevant legislation in relation to the Services, the installation of the Equipment and the use of In-put Material in all cases before the date on which the Services are to start.
- 10.2 If Grundfos' performance of any of its obligations in respect of the Services is prevented or delayed by any act or omission by the Customer (including its agents, subcontractors, consultants or employees) or failure by the Customer to perform any relevant obligation (Customer Default):
- (a) Grundfos shall without limiting its other rights or remedies have the right to suspend performance of the Services until the Customer remedies the Customer Default, and to rely on the Customer Default to relieve it from the performance of any of its obligations under this Agreement to the extent the Customer Default prevents or delays Grundfos' performance of any of its obligations;
- (b) Grundfos shall not be liable for any costs or losses sustained or incurred by the Customer arising directly or indirectly from Grundfos' failure or delay to perform any of its obligations as set out in this condition 10.2; and
- (c) the Customer shall reimburse Grundfos on written demand for any costs or losses sustained or incurred by Grundfos arising directly or indirectly from the Customer Default.
- 10.3 The Customer shall be liable to pay to Grundfos, on demand, all reasonable costs, charges or losses sustained or incurred by Grundfos (including, without limitation, any direct, indirect or consequential losses, loss of profit and loss of reputation, loss or damage to property and those arising from injury to or death of any person and loss of opportunity to deploy resources elsewhere) arising directly or indirectly from the Customer's fraud, negligence, failure to perform or delay in the performance of any of its obligations under this Agreement, subject to Grundfos confirming such costs, charges and losses to the Customer in writing.

10.4	The Customer shall not, without the prior written consent of Grundfos, at any time from the date of this Agreement to the expiry of 12 months after the last date of supply of the Services, solicit or entice away from Grundfos or employ (or attempt to employ) any person who is, or has been, engaged as an employee of Grundfos in the provision of the Services.	
11.	<b>The CDM Regulations</b>	
11.1	The Customer and Grundfos agree that the Customer is to be treated for the purposes of the CDM Regulations as the Client for the purposes of the CDM Regulations.	
11.2	The Customer agrees to ensure that the Works are carried out in accordance with the CDM Regulations.	
11.3	The Customer shall ensure that the Health and Safety File is maintained correctly and is available for inspection in accordance with the CDM Regulations.	
11.4	The Customer shall indemnify and keep the Owner indemnified against liability for any breach of the Customer's obligations under or in connection with this condition 11.	
12.	<b>Charges and Payment</b>	
12.1	The price for the Equipment shall be the price set out in the Order or, if no price is quoted, the price set out in the published price list of Grundfos (or Grundfos as the case may be) as at the date of delivery. Unless otherwise stated in the Order, the price of the Equipment is exclusive of all costs and charges of packaging, insurance, transport of the Equipment, which shall be paid by the Customer when it pays for the Equipment.	13.2
12.2	In the case of Product Services Service contracts, Installation Works and Engineered to Order products Grundfos reserves the right to request a deposit payment and/or payment milestones. The amount or means of calculating such payment shall be set out in the Quotation.	13.3
12.3	Grundfos reserves the right to require (at its option) a parent company guarantee or a personal guarantee from the directors of the Customer at any time in relation to all outstanding amounts due to Grundfos from the Customer from time to time.	13.4
12.4	The charges for Services shall be set out in the Payment Schedule.	13.5
12.5	Unless stated otherwise all prices are given on a DAP (delivered at place) basis.	
12.6	Grundfos reserves the right to: (a) increase its standard daily fee rates for the Services. Grundfos will give the Customer reasonable notice in writing of any such increase before the proposed date of the increase. If such increase is not acceptable to the Customer, it shall notify Grundfos in writing within 14 days of the date of Grundfos' notice and either of Grundfos or the Customer shall have the right, without limiting its other rights or remedies, to terminate this Agreement by giving 14 days' written notice (or any other reasonable notice period if performance of the Order is due to commence within 14 days) to Grundfos or Customer (as applicable); and (b) increase the price of the Equipment, by giving notice to the Customer at any time before delivery, to reflect any increase in the cost of the Equipment to Grundfos that is due to: (i) any factor beyond the control of Grundfos (including foreign exchange fluctuations, increases in taxes and customs' charges and duties, and increases in labour, materials, fuel and other manufacturing costs); (ii) any request by the Customer to change the delivery date(s), quantities or types of Equipment ordered, or the Equipment specification; or (iii) any delay caused by any instructions of the Customer in respect of the Equipment or failure of the Customer to give Grundfos adequate or accurate information or instructions in respect of the Equipment.	14.
12.7	In respect of Equipment, Grundfos shall invoice the Customer on or at any time after completion of delivery. If delivery of the Equipment is made in instalments, Grundfos may invoice the Customer in instalments. In respect of Services, Grundfos shall invoice the Customer in accordance with the Payment Schedule.	14.1
12.8	The Customer shall pay each invoice submitted by Grundfos: (a) within 30 days of the date of the invoice or in accordance with any other payment terms agreed by Grundfos in writing; and (b) in full and in cleared funds to a bank account nominated in writing by Grundfos, and time for payment shall be of the essence of this Agreement.	14.2
12.9	All amounts payable by the Customer under this Agreement are exclusive of amounts in respect of value added tax chargeable from time to time (VAT). The Customer shall pay any VAT which is chargeable on the supply of the Services and/or Equipment at the same time as payment is due for the supply of the Services and/or Equipment.	15.
12.10	Grundfos may in its sole discretion elect to provide a credit facility to the Customer but is not obliged to do so. Any credit facility offered will be on written terms agreed by Grundfos and the Customer.	15.1
12.11	Without prejudice to any other right or remedy that it may have, if the Customer fails to pay Grundfos on the due date, Grundfos may: (a) charge interest on such sum from the due date for payment at an annual rate equal to the set rate of interest provided under the Late Payment of Commercial Debt (Interest) Act 1998 as varied from time to time accruing on a daily basis and being compounded quarterly until payment is made, whether before or after any judgment and the Customer shall pay the interest immediately on demand; (b) charge compensation for late payment at a set rate depending on the size of the debt in accordance with the Late Payment of Commercial Debt Regulations 2002 (SI 2002 No 1674). The minimum charge applicable is £40.00, the maximum applicable is £100.00; (c) appropriate any payment by the Customer to any outstanding invoice as Grundfos may think fit not withstanding any purported appropriation by the Customer; and (d) suspend the provision of further Services until payment has been made in full.	15.2
12.12	The Customer shall pay all amounts due under this Agreement in full without any set-off, counterclaim, deduction or withholding except as required by law. Grundfos may, without limiting its other rights or remedies, set off any amount owing to it by the Customer against any amount payable by Grundfos to the Customer.	15.3
12.13	All sums payable to Grundfos under this Agreement shall become due immediately on its termination, despite any other provision. This condition 12.10 is without prejudice to any right to claim for interest under the law, or any such right under this Agreement.	15.4
12.14	Grundfos shall have a lien on all of the Customer's property in Grundfos' possession for all sums due at any time by the Customer to Grundfos subject to Grundfos giving not less than one month's written notice to the Customer. Grundfos shall be entitled to use, sell and dispose of any such property as agent for the Customer at the Customer's expense. The proceeds of such sale shall be applied towards the payment of monies due to Grundfos and Grundfos shall be discharged of any liability in relation to such property as a result of any sale.	16.
13.	<b>Warranty and Limitation of Liability</b>	16.1
13.1	<i>THE CUSTOMER'S ATTENTION IS SPECIFICALLY DRAWN TO THIS CONDITION</i> Nothing in these Conditions shall limit or exclude Grundfos' liability for: (a) death or personal injury caused by its negligence, or the negligence of its employees, agents or subcontractors; (b) fraud or fraudulent misrepresentation; (c) breach of the terms implied by section 2 of the Supply of Goods and Services Act 1982 (title and quiet possession);	16.2
	(d) breach of the terms implied by section 12 of the Sale of Goods Act 1979 (title and quiet possession); or (e) defective products under the Consumer Protection Act 1987.	16.3
	Subject to condition 13.1: (a) Grundfos shall under no circumstances whatsoever be liable to the Customer, whether in contract, tort (including negligence), breach of statutory duty, or otherwise, for any loss of profit, turnover, data, business opportunity, anticipated savings, any indirect or consequential loss or any damage to goodwill arising under or in connection with this Agreement; (b) Grundfos' total liability to the Customer where the Customer has provided Grundfos with incorrect weights, dimensions, capacity performance or other information shall in no circumstances exceed the price of the Equipment supplied in accordance with such incorrect information; and (c) Grundfos' total liability to the Customer in respect of all other losses arising under or in connection with this Agreement, whether in contract, tort (including negligence), breach of statutory duty, or otherwise, shall in no circumstances exceed £1million.	17.
	The terms implied by sections 13 to 15 of the Sale of Goods Act 1979 and the terms implied by sections 3 to 5 of the Supply of Goods and Services Act 1982 are, to the fullest extent permitted by law, excluded from this Agreement.	17.1
	This condition 13 shall survive termination of this Agreement.	
	The Customer shall indemnify Grundfos for any costs suffered by Grundfos for claims from any third party which arise by virtue of the Customer having resold the Equipment (unless such claim arises solely from Grundfos' negligence).	
	<b>Confidentiality and Grundfos' property</b>	
	Each party (receiving party) shall keep in strict confidence all technical or commercial know-how, specifications, inventions, processes or initiatives which are of a confidential nature and have been disclosed to the receiving party by the other party (disclosing party), its employees, agents or subcontractors, and any other confidential information concerning the disclosing party's business, its products and services which the receiving party may obtain. The receiving party shall only disclose such confidential information to those of its employees, agents and subcontractors who need to know it for the purpose of discharging the receiving party's obligations under this Agreement, and shall ensure that such employees, agents and subcontractors comply with the obligations set out in this condition as though they were a party to this Agreement. The receiving party may also disclose such of the disclosing party's confidential information as is required to be disclosed by law, any governmental or regulatory authority or by a court of competent jurisdiction. Neither party shall use the other's confidential information for any purpose other than to perform its obligations under this Agreement.	
	<b>Intellectual Property Rights</b>	
	(Subject to condition 15.2) all Intellectual Property Rights in or arising out of or in connection with: (a) the Equipment; (b) the Services; or (c) any manuals or documentation given by Grundfos to the Customer, shall be owned by Grundfos and nothing in this agreement shall transfer or assign any such Intellectual Property Rights to the Customer.	
	The Customer acknowledges that, in respect of any third party Intellectual Property Rights, the Customer's use of any such Intellectual Property Rights is conditional on Grundfos first obtaining a written licence from the relevant licensor on such terms as will entitle Grundfos to license such rights to the Customer.	
	The Customer grants to Grundfos a fully paid up, non-exclusive, royalty free, non-transferable licence to copy and modify any In-put Material for the purpose of providing the Services to the Customer.	
	The Customer shall indemnify Grundfos against all liabilities, costs, expenses, damages and losses (including any direct, indirect or consequential losses, loss of profit, loss of reputation and all interest, penalties and legal costs (on a full indemnity basis) and all other reasonable professional costs and expenses) suffered or incurred by Grundfos for actual or alleged infringement of a third party's Intellectual Property Rights arising out of or in connection with Grundfos' use of the Equipment Specification.	
	<b>Data protection</b>	
	Both parties will comply with all applicable requirements of the Data Protection Legislation. This condition 16 is in addition to, and does not relieve, remove or replace, a party's obligations under the Data Protection Legislation. In this condition 16 Applicable Laws means (for so long as and to the extent that they apply to the Supplier) the law of the European Union, the law of any member state of the European Union and/or Domestic UK Law; and Domestic UK Law means any Data Protection Legislation from time to time in force in the UK including the Data Protection Act 2018 or any successor legislation.	
	Without prejudice to the generality of condition 16.1 each party shall, in relation to any Personal Data processed in connection with the performance by that party of its obligations under the Agreement: (a) ensure that it has in place appropriate technical and organisational measures to protect against unauthorised or unlawful processing of Personal Data and against accidental loss or destruction of, or damage to, Personal Data, appropriate to the harm that might result from the unauthorised or unlawful processing or accidental loss, destruction or damage and the nature of the data to be protected, having regard to the state of technological development and the cost of implementing any measures (those measures may include, where appropriate, pseudonymising and encrypting Personal Data, ensuring confidentiality, integrity, availability and resilience of its systems and services, ensuring that availability of and access to Personal Data can be restored in a timely manner after an incident, and regularly assessing and evaluating the effectiveness of the technical and organisational measures adopted by it); (b) assist the other party, at the other party's cost, in responding to any request from a Data Subject and in ensuring compliance with its obligations under the Data Protection Legislation with respect to security, breach notifications, impact assessments and consultations with supervisory authorities or regulators; (c) notify the Customer without undue delay on becoming aware of a Personal Data breach; (d) at the written direction of the other party, delete or return Personal Data and copies thereof to the other party on termination of the agreement unless required by Applicable Law to store the Personal Data; and (e) maintain complete and accurate records and information to demonstrate its compliance with this condition 16.	
	Neither party consents to the other appointing any third-party processor of Personal Data under the Contract.	
	<b>Termination</b>	
	Without limiting its other rights or remedies, Grundfos or Customer may terminate this Agreement with immediate effect by giving written notice to the other party if: (a) the other party commits a material breach of its obligations under this Agreement and (if such breach is remediable) fails to remedy that breach within 7 days after receipt of written notice to do so;	



- (b) the other party takes any step or action in connection with its entering administration, provisional liquidation or any composition or arrangement with its creditors (other than in relation to a solvent restructuring), being wound up (whether voluntarily or by order of the court, unless for the purpose of a solvent restructuring), having a receiver appointed to any of its assets or ceasing to carry on business [or, if the step or action is taken in another jurisdiction, in connection with any analogous procedure in the relevant jurisdiction];
- (c) the other party suspends, or threatens to suspend, or ceases or threatens to cease to carry on all or a substantial part of its business; or
- (d) the other party's financial position deteriorates to such an extent that in the terminating party's opinion the other party's capability to adequately fulfil its obligations under the Contract has been placed in jeopardy.
- 17.2 Without limiting its other rights or remedies, Grundfos may terminate this Agreement with immediate effect by giving written notice to the Customer if:
- (a) there is a change of control of the Customer (as defined in section 574 of the Capital Allowances Act 2001);
- (b) the Customer is unable or unwilling to procure any guarantee required by Grundfos in accordance with condition 12.3; or
- (c) the Customer's financial position deteriorates to such an extent that in Grundfos' opinion the Customer's capability to adequately fulfil its obligations under the Contract has been placed in jeopardy or Customer fails to pay any amount due under this Agreement on the due date for payment.
- 17.3 Without limiting its other rights or remedies, Grundfos may suspend the supply of Services or all further deliveries of Equipment under this Agreement or any other agreement between the Customer and Grundfos if the Customer becomes subject to an Event of Default, or Grundfos reasonably believes that the Customer is about to become subject to any of them.
- 17.4 On termination of this Agreement for any reason:
- (a) the Customer shall immediately pay to Grundfos all of Grundfos' outstanding unpaid invoices and interest and, in respect of Services supplied but for which no invoice has yet been submitted, Grundfos shall submit an invoice, which shall be payable by the Customer immediately on receipt;
- (b) the Customer shall return all of Grundfos' materials and any deliverables which have not been fully paid for and which have not been installed as part of a bigger system. If the Customer fails to do so, then Grundfos may enter the Customer's premises and take possession of them. Until they have been returned, the Customer shall be solely responsible for their safe keeping and will not use them for any purpose not connected with this Agreement;
- (c) the accrued rights and remedies of the parties as at termination shall not be affected, including the right to claim damages in respect of any breach of this Agreement which existed at or before the date of termination or expiry;
- (d) conditions which expressly or by implication have effect after termination shall continue in full force and effect; and
- (e) Grundfos shall have a lien over all of the Customer's property in Grundfos' possession in respect of all sums due at any time from the Customer to Grundfos. Provided that Grundfos gives at least 14 days' prior written notice, Grundfos shall be entitled to use, sell and dispose of such property as agent for and at the expense of the Customer and apply the proceeds towards the payment of monies due and outstanding from the Customer to Grundfos. Thereafter, Grundfos shall be discharged of any liability in respect of the Customer's property.
- 17.5 On termination of this Agreement (however arising), any of these Conditions that expressly or by implication is intended to have effect after termination (or expiry) shall survive and continue in full force and effect.
18. **Force majeure**  
Grundfos shall have no liability to the Customer under this Agreement if it is prevented from, or delayed in performing, its obligations under this Agreement or from carrying on its business by any Force Majeure Event.
19. **Variation**  
Except as provided in these Conditions, no variation of this Agreement or these Conditions or of any of the documents referred to in them shall be valid unless it is in writing and signed by or on behalf of each of the authorised representatives of the parties.
20. **Waiver**  
20.1 A waiver of any right under this Agreement is only effective if it is in writing and it applies only to the circumstances for which it is given. No failure or delay by a party in exercising any right or remedy under this Agreement or by law shall constitute a waiver of that (or any other) right or remedy, nor preclude or restrict its further exercise. No single or partial exercise of such right or remedy shall preclude or restrict the further exercise of that (or any other) right or remedy.
- 20.2 Unless specifically provided otherwise, rights arising under this Agreement are cumulative and do not exclude rights provided by law.
21. **Severance**  
21.1 If any provision of this Agreement (or part of any provision) is found by any court or other authority of competent jurisdiction to be invalid, illegal or unenforceable, that provision or part-provision shall, to the extent required, be deemed not to form part of this Agreement, and the validity and enforceability of the other provisions of this Agreement shall not be affected.
- 21.2 If a provision of this Agreement (or part of any provision) is found illegal, invalid or unenforceable, the provision shall apply with the minimum modification necessary to make it legal, valid and enforceable.
22. **Entire agreement**  
22.1 This Agreement constitutes the whole agreement between the parties and supersedes all previous agreements between the parties relating to its subject matter.
- 22.2 Each party acknowledges that, in entering into this Agreement, it has not relied on, and shall have no right or remedy in respect of, any statement, representation, assurance or warranty (whether made negligently or innocently) (other than for breach of contract), as expressly provided in this Agreement.
- 22.3 Nothing in this condition shall limit or exclude any liability for fraud.
23. **Assignment**  
23.1 The Customer shall not, without the prior written consent of Grundfos, assign, transfer, charge, mortgage, subcontract or deal in any other manner with all or any of its rights or obligations under this Agreement.
- 23.2 Grundfos may at any time assign, transfer, charge, mortgage, subcontract or deal in any other manner with all or any of its rights under this Agreement and may subcontract or delegate in any manner any or all of its obligations under this Agreement to any third party or agent.
- 23.3 Each party that has rights under this Agreement is acting on its own behalf and not for the benefit of another person.
24. **No partnership or agency**  
Nothing in this Agreement is intended to, or shall be deemed to, constitute a partnership or joint venture of any kind between any of the parties, nor constitute any party the agent of another party for any purpose. No party shall have authority to act as agent for, or to bind, the other party in any way.
25. **Rights of third parties**  
A person who is not a party to this Agreement shall not have any rights under or in connection with it.
26. **Notices**  
26.1 Any notice required to be given under this Agreement shall be in writing and shall be delivered personally, or sent by pre-paid first-class post, recorded delivery or by commercial courier to the registered office or the address stated in the Order (or as otherwise notified to the other party in writing).
- 26.2 Any notice shall be deemed to have been duly received if delivered personally, when left at the correct address or, if sent by pre-paid first-class post or recorded delivery, at 9.00am on the second Business Day after posting, or if delivered by commercial courier, on the date and at the time that the courier's delivery receipt is signed.
- 26.3 This condition 26 shall not apply to the service of any proceedings or other documents in any legal action.
- 26.4 A notice required to be given under this Agreement shall also be validly served if sent by e-mail.
27. **Governing law and jurisdiction**  
27.1 This Agreement, and any dispute or claim arising out of or in connection with it or its subject matter or formation (including non-contractual disputes or claims), shall be governed by, and construed in accordance with, the law of England and Wales.
- 27.2 The parties irrevocably agree that the courts of England and Wales shall have exclusive jurisdiction to settle any dispute or claim that arises out of, or in connection with, this Agreement or its subject matter or formation (including non-contractual disputes or claims).

GRUNDFOS PUMPS LTD.  
Grovebury Road  
Leighton Buzzard  
Beds LU7 4TL

Tel: 01525 850000  
Email: [grundfos-uk@sales.grundfos.com](mailto:grundfos-uk@sales.grundfos.com)

[www.grundfos.co.uk](http://www.grundfos.co.uk)

