

Grundfos Water Pressure Boosting Products

Price List February 2020

Category 3B



PRODUCTS INCLUDED:

Hydro GTI/Multi E/MPC-E

MQ

SCALA2

JP5

Pressurisation units

Byepac CM

Expansion Tanks

Sensors



PLEASE NOTE THE FOLLOWING FROM OUR TERMS AND CONDITIONS OF SALE:

A copy of our full terms and conditions are available at the back of this price list

All prices are delivered at place (DAP) and subject to VAT at the standard rate.

MINIMUM ORDER VALUE

Our minimum order value is **£55.00 NET**. Orders between the minimum order value and the low order threshold of **£335.00 NET** for pumps or **£130.00 NET** for Category 4, S1,S2,S3,S4 items will be subject to a **£37.00 NET** handling fee.

EXPRESS DELIVERY OPTIONS;

INTERSPEED (PER ITEM) (above **150 Kgs** – subject to transport availability and additional cost)

- CR(I)(E), CRN(E) Vertical Multistage
- Non-stock SP/SPA models (with or without drop cable cut in 5 metre increments. Please note; resin cable joint will take 24 hours to set)
- Order must be received electronically by **10.45am** – despatch same day, **delivery by Express Carrier Service** – UK (*note restrictions apply)
£75.00 NET (PER ITEM)

BOXSPEED (PER ITEM) – from UK/European DC (above **100 Kgs** – subject to transport availability and additional cost)

- ALPHA, UPS, UPN, UPS3/UPM Circulators
- Magna (D) Glandless Circulators
- UP/UPS/Magna Replacement Heads/Terminal boxes
- TPE(D), NB(E) Glanded
- CM, CME Horizontal Multistage, CMB(E), Boosters, Scala
- JP, MQ and Tanks/Vessels (up to 500 Litre)
- AP, KP, CC, SL1, SLV, Unilift, Sololift
- SQ, SQE, SB(A), SP2A, 3A & 5A >1.5kW (**Excluding pumps with cable fitted as well as SP longer than 2.4 metres**)
- Motors, Flanges & Unions, Pump Components, Chamber Stacks
- Order must be received electronically before **13:30pm** – despatch same day, **delivery by Express Carrier Service** – UK (*note restrictions apply)
FIRST ITEM - £55.00 NET & ADDITIONAL ITEMS £20.00 EACH (PER ORDER)

SPARESPEED (PER ITEM)

- Only applies to spares kits, (**not chamber stacks, components, pump heads or terminal boxes**)
- Order must be received electronically before **13:30pm** – despatch same day, **delivery by Express Carrier Service** – UK (*note restrictions apply)
FIRST ITEM - £45.00 NET & ADDITIONAL ITEMS £20.00 EACH (PER ORDER)

* Express Carrier Service ONLY guaranteed if placed on time via Extranet/EDI. Deliveries to the Highlands, certain mainland post codes and offshore UK may take an extra day. All services are dependent on component and product availability. Grundfos can guarantee despatch or availability for collection same day but cannot guarantee delivery. Grundfos cannot accept any cancellations or amendments once the goods have been despatched. Cancellations are subject to the Product Returns Fee below.

SPARES STANDARD DELIVERY CHARGE

- A **£20.00 NET** handling fee will be applied, per order, to all orders for spares, pump components, spares kits.
- This charge does NOT apply if **SPARESPEED**, express service or our online ordering system (EDI), and/or Extranet are used for order placement.

PRODUCT RETURNS FEE

- On receipt of written agreement from Grundfos, items can be returned and will be subject to a **minimum 35% restocking fee**. Goods must be returned in their original packaging and within **6 months of date of despatch**. All returns will be subject to inspection, to ascertain age, condition and product type and can incur an increased restocking charge. Please contact grundfos-uk@sales.grundfos.com with the original purchase order, to arrange collection. Do not send items to Grundfos as they will be refused delivery, collection will be arranged.
- Items or multiple items from the same Purchase Order must exceed the total Net value of £150

Exclusions to Product Returns apply;

- **All Service kits, cable including attached to pump, assembled/3rd party/engineered to order product, and obsolete/phased out product cannot be returned.**

STORAGE CHARGE

- There will be a **2%** storage charge of the item invoice value, payable per month, commencing one month from the date the goods were available for delivery from Grundfos.

WARRANTY PERIOD

- Grundfos pumps are warranted for 24 months from installation or 30 months from manufacture; whichever is the sooner.
- There is a five-year warranty that covers manufacturing or material defects on domestic heating circulators: UPS3 15-50/65, UPS2 15-50/60, ALPHA models, Amazon & Amazon Universal shower pumps. From 1st March 2017 SCALA2 booster pumps when used in domestic applications.

SERVICE AND COMMISSIONING

Grundfos offers a wide range of service, repair and commissioning options. Please contact Service on 01525 850000 or email servicesupportuk@grundfos.com

ORDER TRACKING AND PROOF OF DELIVERY

- Order status and Proof of Delivery can be obtained via Grundfos Extranet or MyGrundfos online portals.
- For extranet access contact grundfos-uk@sales.grundfos.com and Self-registration for MyGrundfos can be found here; <https://uk.grundfos.com/mygrundfos>

INDEX

	Page	
BOOSTER SET ANCILLARY EQUIPMENT	4	
EXPANSION TANKS	6	
COMPACT WATER BOOSTER PUMP	MQ / SCALA2	7
AUTOMATIC PRESSURE BOOSTER SETS	MQ BYEPAC	7
JET PUMP AND CONTROLS	JP4 / PRESSURE MANAGER	8
MULTI-PUMP BOOSTER SETS	HYDRO MULTI-E 2 PUMP (3ph)	9
	HYDRO MULTI-E 3 PUMP (3ph)	10
	HYDRO MULTI-E 4 PUMP (3ph)	11
	HYDRO MULTI-E 2 PUMP (1ph)	12
	HYDRO MULTI-E 3 PUMP (1ph)	12
	HYDRO MULTI-E 4 PUMP (1ph)	13
	HYDRO MPC-E 2 PUMP	14
	HYDRO MPC-E 3 PUMP	16
	HYDRO MPC-E 4 PUMP	18
	HYDRO MPC-E 5 PUMP	20
	HYDRO MPC-E 6 PUMP	21
WATER TRANSFER SETS	CM BYEPAC	22
HYDRO GTI BOOSTER SETS		23
GRUNDFOS PRESSURISATION	PHT-A	25
PRESSURISATION MODULAR CONTROLLER	PHP-A	26
PRESSURISATION DEGASSING UNITS		27
PRESSURISATION PRIMARY, AUXILLIARY AND INTERMEDIATE VESSELS.		28
PRESSURISATION - AIR SEPARATION		29
PRESSURISATION - DIRT SEPARATION		29
PRESSURISATION - AIR & DIRT SEPARATION		29
GRUNDFOS VORTEX FLOW SENSORS		30
GRUNDFOS DIFFERENTIAL PRESSURE SENSORS		32
GRUNDFOS INDUSTRIAL SENSORS ACCESSORIES		33
CONDITIONS OF SALE		35

CATEGORY 3 - BOOSTER SET ANCILLARY EQUIPMENT

TANK FLOAT SWITCH

Item	£	Product Code
Low Level Switch c/w 5mtrs of cable type AT920	127	GBPS0099

PRESSURE SWITCH

	£	Product Code
-0.2 - 8 bar Pressure Switch (e.g. for suction pressure monitoring)	201	GBPS0010

PRESSURE TRANSDUCER - SINGLE POINT (NO CABLE)

	Fittings	Transducer	£	Product Code
Danfoss MBS3000	1/2" BSPM	0-2.5 bar	228	99033768
Danfoss MBS3000	1/2" BSPM	0-4 bar	228	96637450
Danfoss MBS3000	1/2" BSPM	0-6 bar	228	96637451
Danfoss MBS3000	1/2" BSPM	0-10 bar	228	96637452
Danfoss MBS3000	1/2" BSPM	0-16 bar	228	96637453
Danfoss MBS3000	1/2" BSPM	0-25 bar	228	91072079
Danfoss MBS 3000	1/2" BSPM	0-40 bar	498	96483573
Danfoss MBS 3000	1/2" BSPM	0-60 bar	498	96483574

Note : All transmitters have a 4 to 20 mA signal output.

Note - The above Switches and Pressure Transducers are Category 4 spares items for discount purposes.

AnTi-SURGE VALVE

	£	Product Code
Grundfos 1" AnTi-Surge Valve	1840	98057487

PIPE COMPENSATORS - FOR POTABLE WATER APPLICATIONS

Stainless steel hose.

Rated at 16 bar (24 bar test pressure)

	£	Product Code
2" Screwed BSPM	274	97522730
2½" Screwed BSPM	488	97522731
25mm Screwed BSPM	87	97522727
32mm Screwed BSPM	122	97522728
40mm Screwed BSPM	125	97522729
50mm Flanged PN16	384	97522734
65mm Flanged PN16	478	97522735
80mm Flanged PN16	853	97522736
100mm Flanged PN16	1010	97522737
125mm Flanged PN16	877	97522738
150mm Flanged PN16	1873	97522739
200mm Flanged PN16	1600	97522740

GRUNDFOS GO REMOTE

The Grundfos Go Remote is used wireless infrared or radio communication with the pumps.

Model		£	Product Code
MI 301	Universal dongle for iOS and Android based Smartphones	329	98046408



Note - The above valves, pipe compensators and the Grundfos GO are Category 4 spares items for discount purposes.

BOOSTER SET ANCILLARY EQUIPMENT

ADJUSTING LEVEL SHOES FOR BOOSTER SETS

Item	£	Product Code
Vibration Damper cpl. CR(E) 3/5, options	89	96412344
Vibration Damper cpl. CR(E) 10/20 , options	111	96412345
Vibration Damper cpl. CR(E) 32/90, options	183	96412347

Anti-vibration mounts are available for booster sets. Prices are per individual damper and allow for the system to be height adjusted by +/- 20mm. Please refer to the Grundfos Product Center as different sets require different amounts of dampers.

COMMISSIONING

As our booster sets are built to the highest engineering standards, we strongly recommend they are commissioned by Grundfos Service Engineers to ensure they perform to the design criteria. Full details available from Grundfos Sales Offices or call Grundfos Service direct on 01942 263628

DELIVERY CHARGES

All prices quoted for pressurisation and booster sets are ex-works from Sunderland (GBW).

Delivery charges are available upon request.

WITNESS TESTING OF THE UNITS IS AVAILABLE AS FOLLOWS:-

Witness Test Certificates not involving customers	POA
Witness Test in the presence of the customer and to his time and date	POA

Booster sets that can deliver higher pressure and/or volume are also available on request.

CATEGORY 3 - COLD WATER EXPANSION TANKS

COLD WATER DIAPHRAGM TANKS - WRAS APPROVED

GT - H / GT - D

10 bar rated, 70° C

Model	£	Product Code
Vertical - GT-H-8-V	63	96526321
Vertical - GT-H-12-V	78	96528336
Vertical - GT-H-18-V	81	96528337
Vertical - GT-H-24-V	87	96528339
Vertical - GT-H-33-V	157	96528340
Vertical - GT-H-60-V	258	96528341
Horizontal - GT-H-24-H	80	96528388
Horizontal - GT-H-60-H	303	96528389
Horizontal - GT-H-80-H	336	96528390

Model	£	Product Code
Vertical - GT-D-80-V	303	96894291
Vertical - GT-D-100-V	360	97527968
Vertical - GT-D-130-V	487	96528344
Vertical - GT-D-200-V	664	97792897
Vertical - GT-D-240-V	715	96528346
Vertical - GT-D-300-V	812	96528347
Vertical - GT-D-450-V	1438	96528348

GT-H-xxV, GT-H-xxH and GT-D-xxV tanks are all WRAS approved.

All Grundfos GT tanks are either single or double diaphragm dependant on type.

£

COLD WATER BLADDER TANKS - WRAS APPROVED

GT - U

10 bar rated, 70° C

Model	£	Product Code
Vertical - GT-U-500-V	1298	96573280
Vertical - GT-U-600-V	2756	96603451
Vertical - GT-U-800-V	3337	96603452
Vertical - GT-U-1000-V	3696	96603453
Vertical - GT-U-1500-V	6415	96573283
Vertical - GT-U-2000-V	9592	96573284
Vertical - GT-U-3000-V	14709	96573285
Vertical - GT-U-4000-V	21962	96603454
Vertical - GT-U-5000-V	28275	96603456

16 bar rated, 70° C

Model	£	Product Code
Vertical - GT-U- 12V	71	96573348
Vertical - GT-U- 25V	107	96573349
Vertical - GT-U- 80V	686	96603420
Vertical - GT-U- 100V	723	96603421
Vertical - GT-U- 200V	1224	96603422
Vertical - GT-U- 300V	1354	96603423
Vertical - GT-U- 400V	1452	96603424
Vertical - GT-U- 500V	1737	96603425
Vertical - GT-U- 600V	3065	96603426
Vertical - GT-U- 800V	3974	96603427
Vertical - GT-U- 1000V	4407	96603428
Vertical - GT-U- 1500V	15340	96603429
Vertical - GT-U- 2000V	16341	96603430
Vertical - GT-U- 3000V	23479	96603431
Vertical - GT-U- 4000V	31304	96603432
Vertical - GT-U- 5000V	39134	96603433



Grundfos GT-U tanks have replaceable bladders

GT-U-xxV tanks are all WRAS approved.

25 bar rated, 70° C

Model	£	Product Code
Vertical GT-U- 8V	106	96573347

CATEGORY 3 - HOT WATER EXPANSION TANKS

Model	£	Product Code
-------	---	--------------

GT HOT WATER DIAPHRAGM TANKS

6 bar rated, 90° C

GT-HR-50 V	138	96573395
GT-HR-80 V	224	96573396
GT-HR-100 V	266	96573397
GT-HR-140 V	348	96573398
GT-HR-200 V	509	96573399
GT-HR-250 V	630	96573400
GT-HR-300 V	674	96573401
GT-HR-400 V	915	96573403
GT-HR-500 V	1100	96573404
GT-HR-600 V	1354	96573405
GT-HR-800 V	1928	96573407
GT-HR-1000 V	2398	96573408

All Grundfos GT-HR diaphragm tanks are CE marked.

Grundfos GT-HR tanks have non replaceable diaphragms.

Grundfos GT-HR and GTU+ tanks are for use in LTHW or chilled water systems with appropriate water treatment.

Grundfos GT-U+ tanks have replaceable bladders

GT-U-xxV tanks are all WRAS approved.

GT-HR / GT-U+

10 bar rated, 90° C

Vertical - GT-U+ - 100V	278	99082696
Vertical - GT-U+ - 150V	593	99082697
Vertical - GT-U+ - 200V	630	99082698
Vertical - GT-U+ - 300V	833	99082699
Vertical - GT-U+ - 500V	1261	99082700
Vertical - GT-U+ - 750V	1639	99082701
Vertical - GT-U+ - 1000V	2781	99082702
Vertical - GT-U+ - 1500V	3623	99082703
Vertical - GT-U+ - 2000V	6779	99082704

16 bar rated, 90° C

Vertical - GT-U+ - 100V	642	99082706
Vertical - GT-U+ - 150V	928	99082707
Vertical - GT-U+ - 200V	1019	99082708
Vertical - GT-U+ - 300V	1048	99082709
Vertical - GT-U+ - 500V	1820	99082710
Vertical - GT-U+ - 750V	2125	99082711
Vertical - GT-U+ - 1000V	3553	99082712
Vertical - GT-U+ - 1500V	4604	99082713
Vertical - GT-U+ - 2000V	7141	99082714
Vertical - GT-U+ - 3000V	11031	99082715



CATEGORY 3 - AUTOMATIC WATER SUPPLY PUMP

MQ - COMPACT FIXED SPEED WATER BOOSTER PUMP

Model	230-240V 1ph 50Hz	
	£	Product Code
MQ 3-35 (3 Bar)	850	96607287
MQ 3-45 (4 Bar)	890	96607288



SCALA2 - COMPACT VARIABLE SPEED HOME WATER BOOSTER PUMP



Model	240V 1ph 50Hz	
	£	Product Code
SCALA2 3-45 A	567	98562865

Sizing – up to three floors and eight standard domestic outlets

* Pallet quantity = 14

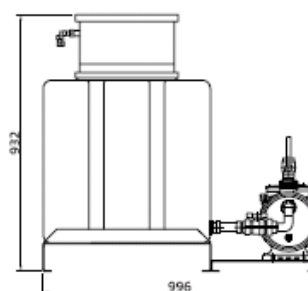
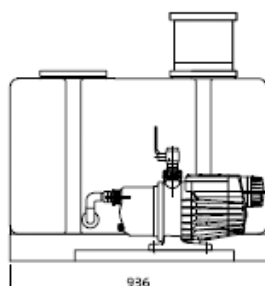


CATEGORY 3 - AUTOMATIC PRESSURE BOOSTER SETS

MQ BYEPAC

230V-240V 1Ph 50Hz Model	Tank Size		Connection (BSPF)	£	Product Code
	(Gallons)	(Litres)			
Byepac MQ 3-35	50	227	1"	2200	BPMQ3551
Byepac MQ 3-45	50	227	1"	2218	BPMQ4551

50 GALLON TANK



CATEGORY 3 - JP SINGLE STAGE JET PUMPS, KITS AND PRESSURE MANAGER

JP Single Stage Jet Pump WRAS APPROVED

230-240V 1ph 50Hz

Model	£	Product Code
JP 4-54	404	99458789



BOOSTER PACKAGE ACCESSORIES FOR USE WITH JP4 PUMPS

	£	Product Code
24 litre horizontal tank kit	569	4620APBA
18 litre vertical tank kit	481	4618CRAA
Non Return Valve	50	GBNR0003

Either the horizontal or the vertical kit can be used with the 230-240V JP4 pump. A separately supplied non-return valve must also be installed.

PRESSURE MANAGER

1 x 220-240 V, 50/60 Hz

Model		Max current	£	Product Code
PM1 15	cut in 1.5bar, cut out at no flow.	6A	177	96848670
PM1 22	cut in 2.2bar, cut out at no flow.	6A	177	96848701
PM2	cut in variable from 1.5 to 5.5bar, cut out at no flow.	10A	205	96848738

Max liquid temperature: 40°C

Max ambient temperature: 50°C



		£	Product Code
Pressure tank (additional to PM2)	8 Litre vertical tank	63	96526321

OTHER ACCESSORIES

			Product Code
Float level switch		127	GBPS0099
Spring loaded foot valves in Cast iron	1" BSPF	82	956110
	1 1/4" BSPF	123	956112

NOTE - ALL THE ABOVE JP ACCESSORY PRICES ARE CATEGORY 4 ITEMS FOR DISCOUNT PURPOSES

CATEGORY 3 - HYDRO MULTI-E TWO PUMP BOOSTER SETS (3ph)

IE5 Permanent magnet motors - added functionality

415V 3ph 50Hz

Model	Electric Motor per pump kW	Manifold size	Closed Valve (bar)	£	Product Code
Hydro Multi-E 2 CME3-5 , 3 X 400/230V	1.1	R 1 1/2	6.3	6,527	98486648
Hydro Multi-E 2 CME5-4 , 3 X 400V	1.5	R 2	5.3	7,559	98486695
Hydro Multi-E 2 CME5-6 , 3 X 400V	2.2	R 2	8.3	8,386	98486750
Hydro Multi-E 2 CME10-2 , 3 X 400V	2.2	R 2 1/2	4.5	9,142	98486751
Hydro Multi-E 2 CME15-1 , 3 X 400V	2.2	DN 80	2.4	11,260	98507199
Hydro Multi-E 2 CME5-8 , 3 X 400V	3	R 2 1/2	10.2	9,206	99133605
Hydro Multi-E 2 CME10-3 , 3 X 400V	4	R 2 1/2	6.8	10,671	99133611
Hydro Multi-E 2 CME10-4 , 3 X 400V	5.5	R 2 1/2	9.4	11,563	99133617
Hydro Multi-E 2 CME10-5 , 3 X 400V	5.5	R 2 1/2	11.5	11,749	99133622
Hydro Multi-E 2 CME15-2 , 3 X 400V	4	DN 80	4.9	12,789	99133627
Hydro Multi-E 2 CME15-3 , 3 X 400V	7.5	DN 80	7.5	14,552	99133634

IE5 Permanent magnet motors - added functionality

				£	Product Code
Hydro Multi-E 2 CRIE1-4 , 3 X 400/230V	0.37	R 2	3.4	6,962	98486537
Hydro Multi-E 2 CRIE1-6 , 3 X 400/230V	0.55	R 2	5.1	6,924	98486567
Hydro Multi-E 2 CRIE1-9 , 3 X 400/230V	0.75	R 2	7.7	7,332	98486613

IE5 Permanent magnet motors - added functionality

				£	Product Code
Hydro Multi-E 2 CRIE3-2 , 3 X 400/230V	0.37	R 2	1.8	6,570	98486539
Hydro Multi-E 2 CRIE3-4 , 3 X 400/230V	0.55	R 2	3.6	6,779	98486569
Hydro Multi-E 2 CRIE3-5 , 3 X 400/230V	0.75	R 2	4.5	7,065	98486615
Hydro Multi-E 2 CRIE3-8 , 3 X 400/230V	1.1	R 2	7.3	7,494	98486672
Hydro Multi-E 2 CRIE3-11 , 3 X 400/230V	1.5	R 2	10.2	8,381	98486720

IE5 Permanent magnet motors - added functionality

				£	Product Code
Hydro Multi-E 2 CRIE5-2 , 3 X 400/230V	0.55	R 2	1.8	6,750	98486581
Hydro Multi-E 2 CRIE5-4 , 3 X 400/230V	1.1	R 2	3.9	7,214	98486674
Hydro Multi-E 2 CRIE5-5 , 3 X 400/230V	1.5	R 2	4.9	7,959	98486722
Hydro Multi-E 2 CRIE5-9 , 3 X 400V	2.2	R 2	10.9	9,552	98486772
Hydro Multi-E 2 CRIE5-12 , 3 X 400V	3	R 2	11.7	10,258	99133112

IE5 Permanent magnet motors - added functionality

				£	Product Code
Hydro Multi-E 2 CRIE10-1 , 3 X 400/230V	0.75	R 2 1/2	1.3	7,250	98486617
Hydro Multi-E 2 CRIE10-2 , 3 X 400/230V	1.5	R 2 1/2	2.9	8,268	98486724
Hydro Multi-E 2 CRIE10-3 , 3 X 400V	2.2	R 2 1/2	4.4	9,736	98486773

IE5 Permanent magnet motors - added functionality

				£	Product Code
Hydro Multi-E 2 CRIE10-5 , 3 X 400V	3	R 2 1/2	7.2	10,432	99133117
Hydro Multi-E 2 CRIE10-6 , 3 X 400V	4	R 2 1/2	8.7	11,896	99133136
Hydro Multi-E 2 CRIE10-9 , 3 X 400V	5.5	R 2 1/2	13.0	13,684	99133182

IE5 Permanent magnet motors - added functionality

				£	Product Code
Hydro Multi-E 2 CRIE15-1 , 3 X 400/230V	1.5	DN 80	1.8	9,855	98486726
Hydro Multi-E 2 CRIE15-2 , 3 X 400V	3	DN 80	3.9	11,976	99133201
Hydro Multi-E 2 CRIE15-3 , 3 X 400V	4	DN 80	6.0	13,356	99133206
Hydro Multi-E 2 CRIE15-4 , 3 X 400V	5.5	DN 80	7.9	14,927	99133210
Hydro Multi-E 2 CRIE15-5 , 3 X 400V	7.5	DN 80	10.0	16,569	99133229
Hydro Multi-E 2 CRIE15-7 , 3 X 400V	7.5	DN 80	15.3	18,211	99132950

IE5 Permanent magnet motors - added functionality

				£	Product Code
Hydro Multi-E 2 CRIE20-1 , 3 X 400V	2.2	DN 80	1.9	11,301	98486774
Hydro Multi-E 2 CRIE20-2 , 3 X 400V	4	DN 80	4.1	13,356	99133235
Hydro Multi-E 2 CRIE20-3 , 3 X 400V	5.5	DN 80	6.1	14,973	99133255
Hydro Multi-E 2 CRIE20-4 , 3 X 400V	7.5	DN 80	8.3	16,794	99133601
Hydro Multi-E 3 CRIE20-7 , 3 X 400V	11	DN 80	14.4	18,615	99132966

Packaged booster sets come complete with stainless steel manifolds and an electrical panel complete with isolator and mcb's
Each pump incorporates an integral frequency converter drive, controlled in a cascade operation to maintain a constant pressure.

Additional models are available including special build variants. Please contact your local sales for further information

Recommended additional free standing vessel sizes as required against each pump size.

See page 6 for product codes and prices.

DataCommunication interface - Permanent magnet motors use CIM

CME / CRIE 3, 5, 10

Additional vessel not required.

CME / CRIE 15, 20

80 Litre



CATEGORY 3 - HYDRO MULTI-E THREE PUMP BOOSTER SETS (3ph)

IE5 Permanent magnet motors - added functionality

415V 3ph 50Hz

Model	Electric Motor per pump kW	Manifold size	Closed Valve (bar)	£	Product Code
Hydro Multi-E 3 CME3-3, 3 X 400/230V	1.1	R 1 1/2	4.1	8,687	98486656
Hydro Multi-E 3 CME5-4, 3 X 400V	1.5	R 2	5.7	10,504	98486707
Hydro Multi-E 3 CME5-6, 3 X 400V	2.2	R 2	8.5	11,706	98486759
Hydro Multi-E 3 CME10-2, 3 X 400V	2.2	R 2 1/2	4.8	13,001	98486760
Hydro Multi-E 3 CME15-1, 3 X 400V	2.2	DN 100	2.7	16,815	98507200
Hydro Multi-E 3 CME5-8, 3 X 400V	3	R 2	11.2	12,860	99133606
Hydro Multi-E 3 CME10-3, 3 X 400V	4	R 2 1/2	7.2	15,221	99133614
Hydro Multi-E 3 CME15-2, 3 X 400V	4	DN 100	5.2	19,034	99133628

IE5 Permanent magnet motors - added functionality

				£	Product Code
Hydro Multi-E 3 CRIE1-4, 3 X 400/230V	0.37	R 2	3.4	9,294	98486541
Hydro Multi-E 3 CRIE1-6, 3 X 400/230V	0.55	R 2	5.1	9,238	98486583
Hydro Multi-E 3 CRIE1-9, 3 X 400/230V	0.75	R 2	7.7	9,809	98486619
Hydro Multi-E 3 CRIE1-13, 3 X 400/230V	1.1	R 2	11.0	10,785	99132897

IE5 Permanent magnet motors - added functionality

				£	Product Code
Hydro Multi-E 3 CRIE3-2, 3 X 400/230V	0.37	R 2	1.8	8,707	98486543
Hydro Multi-E 3 CRIE3-4, 3 X 400/230V	0.55	R 2	3.6	9,020	98486585
Hydro Multi-E 3 CRIE3-5, 3 X 400/230V	0.75	R 2	4.5	9,449	98486631
Hydro Multi-E 3 CRIE3-8, 3 X 400/230V	1.1	R 2	7.3	10,092	98486676
Hydro Multi-E 3 CRIE3-11, 3 X 400/230V	1.5	R 2	10.2	11,382	98486728

IE5 Permanent magnet motors - added functionality

				£	Product Code
Hydro Multi-E 3 CRIE5-2, 3 X 400/230V	0.55	R 2	1.8	9,311	98486587
Hydro Multi-E 3 CRIE5-4, 3 X 400/230V	1.1	R 2	3.9	9,667	98486678
Hydro Multi-E 3 CRIE5-5, 3 X 400/230V	1.5	R 2	4.9	10,785	98486730
Hydro Multi-E 3 CRIE5-9, 3 X 400V	2.2	R 2	10.9	13,112	98486777
Hydro Multi-E 3 CRIE5-12, 3 X 400V	3	R 2	11.7	14,171	99133114

IE5 Permanent magnet motors - added functionality

				£	Product Code
Hydro Multi-E 3 CRIE10-1, 3 X 400/230V	0.75	DN 80	1.3	9,457	98486633
Hydro Multi-E 3 CRIE10-2, 3 X 400/230V	1.5	DN 80	2.9	10,984	98486732
Hydro Multi-E 3 CRIE10-3, 3 X 400V	2.2	DN 80	4.4	13,158	98486778
Hydro Multi-E 3 CRIE10-5, 3 X 400V	3	DN 80	7.2	14,202	99133119
Hydro Multi-E 3 CRIE10-6, 3 X 400V	4	DN 80	8.7	16,371	99133138
Hydro Multi-E 3 CRIE10-9, 3 X 400V	5.5	DN 80	13.0	19,054	99133194

IE5 Permanent magnet motors - added functionality

				£	Product Code
Hydro Multi-E 3 CRIE15-1, 3 X 400/230V	1.5	DN 100	1.8	13,214	98486734
Hydro Multi-E 3 CRIE15-2, 3 X 400V	3	DN 100	3.9	16,367	99133204
Hydro Multi-E 3 CRIE15-3, 3 X 400V	4	DN 100	6.0	18,438	99133207
Hydro Multi-E 3 CRIE15-4, 3 X 400V	5.5	DN 100	7.9	20,817	99133223
Hydro Multi-E 3 CRIE15-5, 3 X 400V	7.5	DN 100	10.0	23,616	99133231

IE5 Permanent magnet motors - added functionality

				£	Product Code
Hydro Multi-E 3 CRIE20-1, 3 X 400V	2.2	DN 100	1.9	15,354	98486779
Hydro Multi-E 3 CRIE20-2, 3 X 400V	4	DN 100	4.1	18,438	99133253
Hydro Multi-E 3 CRIE20-3, 3 X 400V	5.5	DN 100	6.1	20,862	99133256
Hydro Multi-E 3 CRIE20-4, 3 X 400V	7.5	DN 100	8.3	23,616	99133603
Hydro Multi-E 3 CRIE20-7, 3 X 400V	11	DN 100	14.4	26,370	99132969

Packaged booster sets come complete with stainless steel manifolds and an electrical panel complete with isolator and pump mcb's.

Each pump incorporates an integral frequency converter drive, controlled in a cascade operation to maintain a constant pressure.

Additional models are available including special build variants. Please contact your local sales for further information

Recommended additional free standing vessel sizes as required against each pump size.

See page 6 for product codes and prices.

DataCommunication interface - Permanent magnet motors use CIM

CME / CRIE 3, 5, 10

Additional vessel not required.

CRIE 15, 20

80 Litre



CATEGORY 3 - HYDRO MULTI-E FOUR PUMP BOOSTER SETS (3ph)

IE5 Permanent magnet motors - added functionality

415V 3ph 50Hz

Model	Electric Motor per pump kW	Manifold size	Closed Valve (bar)	£	Product Code
Hydro Multi-E 4 CRIE1-4, 3 X 400/230V	0.37	R 2 1/2	3.4	10,236	98486545
Hydro Multi-E 4 CRIE1-6, 3 X 400/230V	0.55	R 2 1/2	5.1	10,161	98486589
Hydro Multi-E 4 CRIE1-9, 3 X 400/230V	0.75	R 2 1/2	7.7	10,895	98486635
Hydro Multi-E 4 CRIE1-13, 3 X 400/230V	1.1	R 2 1/2	11.0	12,177	99132908

IE5 Permanent magnet motors - added functionality

				£	Product Code
Hydro Multi-E 4 CRIE3-2, 3 X 400/230V	0.37	R 2 1/2	1.8	9,453	98486547
Hydro Multi-E 4 CRIE3-4, 3 X 400/230V	0.55	R 2 1/2	3.6	9,870	98486591
Hydro Multi-E 4 CRIE3-5, 3 X 400/230V	0.75	R 2 1/2	4.5	10,443	98486637
Hydro Multi-E 4 CRIE3-8, 3 X 400/230V	1.1	R 2 1/2	7.3	11,300	98486680
Hydro Multi-E 4 CRIE3-11, 3 X 400/230V	1.5	R 2 1/2	10.2	12,993	98486736

IE5 Permanent magnet motors - added functionality

				£	Product Code
Hydro Multi-E 4 CRIE5-2, 3 X 400/230V	0.55	R 2 1/2	1.8	9,802	98486593
Hydro Multi-E 4 CRIE5-4, 3 X 400/230V	1.1	R 2 1/2	3.9	10,729	98486682
Hydro Multi-E 4 CRIE5-5, 3 X 400/230V	1.5	R 2 1/2	4.9	12,220	98486738
Hydro Multi-E 4 CRIE5-9, 3 X 400V	2.2	R 2 1/2	10.9	15,280	98486781
Hydro Multi-E 4 CRIE5-12, 3 X 400V	3	R 2 1/2	11.7	16,692	99133116

IE5 Permanent magnet motors - added functionality

				£	Product Code
Hydro Multi-E 4 CRIE10-1, 3 X 400/230V	0.75	DN 80	1.3	11,664	98486639
Hydro Multi-E 4 CRIE10-2, 3 X 400/230V	1.5	DN 80	2.9	13,700	98486740
Hydro Multi-E 4 CRIE10-3, 3 X 400V	2.2	DN 80	4.4	16,580	98486782
Hydro Multi-E 4 CRIE10-5, 3 X 400V	3	DN 80	7.2	17,972	99133133
Hydro Multi-E 4 CRIE10-6, 3 X 400V	4	DN 80	8.7	20,847	99133139
Hydro Multi-E 4 CRIE10-9, 3 X 400V	5.5	DN 80	13.0	24,424	99133196

IE5 Permanent magnet motors - added functionality

				£	Product Code
Hydro Multi-E 4 CRIE15-1, 3 X 400/230V	1.5	DN 100	1.8	16,798	98486742
Hydro Multi-E 4 CRIE15-2, 3 X 400V	3	DN 100	3.9	20,983	99133205
Hydro Multi-E 4 CRIE15-3, 3 X 400V	4	DN 100	6.0	23,744	99133208
Hydro Multi-E 4 CRIE15-4, 3 X 400V	5.5	DN 100	7.9	26,931	99133227
Hydro Multi-E 4 CRIE15-5, 3 X 400V	7.5	DN 100	10.0	30,663	99133234
Hydro Multi-E 4 CRIE15-7, 3 X 400V	7.5	DN 100	13.8	34,396	99132963

IE5 Permanent magnet motors - added functionality

				£	Product Code
Hydro Multi-E 4 CRIE20-1, 3 X 400V	2.2	DN 100	1.9	19,632	98486783
Hydro Multi-E 4 CRIE20-2, 3 X 400V	4	DN 100	4.1	23,744	99133254
Hydro Multi-E 4 CRIE20-3, 3 X 400V	5.5	DN 100	6.1	26,976	99133257
Hydro Multi-E 4 CRIE20-4, 3 X 400V	7.5	DN 100	8.3	30,663	99133604
Hydro Multi-E 4 CRIE20-7, 3 X 400V	11	DN 100	14.4	34,350	99132970

Packaged booster sets come complete with stainless steel manifolds and an electrical panel complete with isolator and pump mcb's.

Each pump incorporates an integral frequency converter drive, controlled in a cascade operation to maintain a constant pressure.

Additional models are available including special build variants. Please contact your local sales for further information

Recommended additional free standing vessel sizes as required against each pump size.

See page 6 for product codes and prices.

Data Communication interface - Permanent magnet motors use CIM

CRIE 3, 5, 10

Additional vessel not required.

CRIE 15, 20

80 Litre



CATEGORY 3 - HYDRO MULTI-E TWO PUMP BOOSTER SETS (1ph)

Model

240V 1ph 50Hz

Electric Motor	Closed			
per pump KW	Manifold size	Valve (bar)	£	Product Code
IES Permanent magnet motors - added functiona				
Hydro Multi-E 2 CRIE1-4	R 2	3.4	6,962	98584928
Hydro Multi-E 2 CRIE1-6	R 2	5.1	6,924	98584934
Hydro Multi-E 2 CRIE1-9	R 2	7.7	7,332	98584943
Hydro Multi-E 2 CRIE1-13	R 2	11.3	6,579	98716952

IES Permanent magnet motors - added functionality

			£	Product Code
Hydro Multi-E 2 CRIE3-2	R 2	1.8	6,570	98584929
Hydro Multi-E 2 CRIE3-4	R 2	3.6	6,779	98584935
Hydro Multi-E 2 CRIE3-5	R 2	4.5	7,065	98584944
Hydro Multi-E 2 CRIE3-8	R 2	7.3	7,494	98584962
Hydro Multi-E 2 CRIE3-11	R 2	10.2	8,381	98584968

IES Permanent magnet motors - added functionality

			£	Product Code
Hydro Multi-E 2 CRIE5-2	R 2	1.8	6,750	98584936
Hydro Multi-E 2 CRIE5-4	R 2	3.9	7,214	98584963
Hydro Multi-E 2 CRIE5-5	R 2	4.9	7,959	98584969
Hydro Multi-E 2 CRIE10-1	R 2 1/2	1.3	7,250	98584945
Hydro Multi-E 2 CRIE10-2	R 2 1/2	2.9	8,268	98584970
Hydro Multi-E 2 CRIE15-1	R 2 1/2	1.8	9,855	98584971

Packaged booster sets come complete with stainless steel manifolds and an electrical panel complete with isolator and pumps mcb's. Each motor contains an integral frequency converter drive controlled in a cascade operation to maintain a constant pressure.

Additional models are available including special build variants. Please contact your local sales for further information

Recommended additional free standing vessel sizes as required against each pump size.

See page 6 for product codes and prices.

DataCommunication interface - Permanent magnet motors use CIM

CRIE 3, 5, 10

Additional vessel not required.

CRIE 15, 20

80 Litre



CATEGORY 3 - HYDRO MULTI-E THREE PUMP BOOSTER SETS (1ph)

Model

240V 1ph 50Hz

Electric Motor	Closed			
per pump KW	Manifold size	Valve (bar)	£	Product Code
IES Permanent magnet motors - added functiona				
Hydro Multi-E 3 CRIE1-4	R 2	3.4	9,294	98584930
Hydro Multi-E 3 CRIE1-6	R 2	5.1	9,238	98584937
Hydro Multi-E 3 CRIE1-9	R 2	7.7	9,809	98584946

IES Permanent magnet motors - added functionality

			£	Product Code
Hydro Multi-E 3 CRIE3-2	R 2	1.8	8,707	98584931
Hydro Multi-E 3 CRIE3-4	R 2	3.6	9,020	98584938
Hydro Multi-E 3 CRIE3-5	R 2	4.5	9,449	98584947
Hydro Multi-E 3 CRIE3-8	R 2	7.3	10,092	98584964
Hydro Multi-E 3 CRIE3-11	R 2	10.2	11,382	98584972

IES Permanent magnet motors - added functionality

			£	Product Code
Hydro Multi-E 3 CRIE5-2	R 2	1.8	8,972	98584939
Hydro Multi-E 3 CRIE5-4	R 2	3.9	9,667	98584965
Hydro Multi-E 3 CRIE5-5	R 2	4.9	10,785	98584973
Hydro Multi-E 3 CRIE10-1	DN 80	1.3	9,457	98584948
Hydro Multi-E 3 CRIE10-2	DN 80	2.9	10,984	98584974
Hydro Multi-E 3 CRIE15-1	DN 100	1.8	13,214	98584975

Data Communication interface - Permanent magnet motors use CIM

Packaged booster sets come complete with stainless steel manifolds and an electrical panel complete with isolator and pumps mcb's. Each pump incorporates an integral frequency converter drive, controlled in a cascade operation to maintain a constant pressure.

Additional models are available including special build variants. Please contact your local sales for further information

Recommended additional free standing vessel sizes as required against each pump size.

See page 6 for product codes and prices.

CRIE 3, 5, 10

Additional vessel not required.

CRIE 15, 20

80 Litre



CATEGORY 3 - HYDRO MULTI-E FOUR PUMP BOOSTER SETS (1ph)

Model	Electric Motor	Manifold size	Closed Valve (bar)	£	Product Code
240V 1ph 50Hz					
IE5 Permanent magnet motors - added functionality per pump kW					
Hydro Multi-E 4 CRIE1-4	0.37	R 2 1/2	3.4	10,236	98584932
Hydro Multi-E 4 CRIE1-6	0.55	R 2 1/2	5.1	10,161	98584940
Hydro Multi-E 4 CRIE1-9	0.75	R 2 1/2	7.7	10,895	98584949
IE5 Permanent magnet motors - added functionality				£	Product Code
Hydro Multi-E 4 CRIE3-2	0.37	R 2 1/2	1.8	9,453	98584933
Hydro Multi-E 4 CRIE3-4	0.55	R 2 1/2	3.6	9,870	98584941
Hydro Multi-E 4 CRIE3-5	0.75	R 2 1/2	4.5	10,443	98584950
Hydro Multi-E 4 CRIE3-8	1.1	R 2 1/2	7.3	11,300	98584966
Hydro Multi-E 4 CRIE3-11	1.5	R 2 1/2	10.2	12,993	98584976
IE5 Permanent magnet motors - added functionality				£	Product Code
Hydro Multi-E 4 CRIE5-2	0.55	R 2 1/2	1.8	9,802	98584942
Hydro Multi-E 4 CRIE5-4	1.1	R 2 1/2	3.9	10,729	98584967
Hydro Multi-E 4 CRIE5-5	1.5	R 2 1/2	4.9	12,220	98584977
IE5 Permanent magnet motors - added functionality				£	Product Code
Hydro Multi-E 4 CRIE10-1	0.75	DN 80	1.3	11,664	98584961
Hydro Multi-E 4 CRIE10-2	1.5	DN 80	2.9	13,700	98584978
Hydro Multi-E 4 CRIE15-1	1.5	DN 100	1.8	16,798	98584979

Packaged booster sets come complete with stainless steel manifolds and an electrical panel complete with isolator and pumps mcb's. Each pump incorporates an integral frequency converter drive, controlled in a cascade operation to maintain a constant pressure.

Additional models are available including special build variants. Please contact your local sales for further information

Recommended additional free standing vessel sizes as required against each pump size.

See page 6 for product codes and prices.

Data Communication interface - Permanent magnet motors use CIM

CRIE 3, 5, 10

Additional vessel not required.

CRIE 15, 20

80 Litre



CATEGORY 3 - HYDRO MPC-E VARIABLE SPEED CRIE 2 PUMP BOOSTER SETS - WRAS APPROVED

2" STAINLESS STEEL MANIFOLDS | IE5 PERMANENT MAGNET MOTORS

230V 1Ph 50Hz Model	Electric Motor per pump kW	Base Plate	FLC (A) (per pump)	closed Valve(bar)	£	Product Code
Hydro MPC-E 2 CRIE3-2	0.37	1	2.4	1.8	8727	98426890
Hydro MPC-E 2 CRIE3-4	0.55	1	2.4	3.6	8934	98426893
Hydro MPC-E 2 CRIE3-5	0.75	1	4.5	4.3	9222	98426896
Hydro MPC-E 2 CRIE3-8	1.1	1	6.6	7.0	9733	98426899
Hydro MPC-E 2 CRIE5-2	0.55	1	3.4	1.8	8895	98426908
Hydro MPC-E 2 CRIE5-4	1.1	1	6.6	3.7	9435	98426911

2.5" STAINLESS STEEL MANIFOLDS | IE5 PERMANENT MAGNET MOTORS

230V 1Ph 50Hz					£	Product Code
Hydro MPC-E 2 CRIE10-1	0.55	1	3.4	1.0	9613	98426923

2" STAINLESS STEEL MANIFOLDS | IE5 PERMANENT MAGNET MOTORS

400V 3Ph 50Hz					£	Product Code
Hydro MPC-E 2 CRIE3-11	1.5	1	3.3	10.0	10842	98426902
Hydro MPC-E 2 CRIE5-5	1.5	1	3.3	4.8	10484	98426914
Hydro MPC-E 2 CRIE5-9	2.2	1	4.6	8.6	11337	98426917
Hydro MPC-E 2 CRIE5-12	3	1	6.2	11.4	12375	99208231

2.5" STAINLESS STEEL MANIFOLDS | IE5 PERMANENT MAGNET MOTORS

400V 3Ph 50Hz					£	Product Code
Hydro MPC-E 2 CRIE10-2	1.5	1	3.3	2.2	11009	98426928
Hydro MPC-E 2 CRIE10-3	2.2	1	4.6	3.4	11804	98426933
Hydro MPC-E 2 CRIE10-5	3	1	6.2	5.7	12831	99257322
Hydro MPC-E 2 CRIE10-6	4	1	8.1	6.9	14207	99208283
Hydro MPC-E 2 CRIE10-9	5.5	1	11.0	10.4	15679	99208302

DN80 STAINLESS STEEL MANIFOLDS | IE5 PERMANENT MAGNET MOTORS

400V 3Ph 50Hz					£	Product Code
Hydro MPC-E 2 CRIE15-1	1.5	1	3.3	1.4	12286	98426953
Hydro MPC-E 2 CRIE15-2	3	1	6.2	3.0	13799	99257333
Hydro MPC-E 2 CRIE15-3	4	1	8.1	4.6	15440	99257334
Hydro MPC-E 2 CRIE15-4	5.5	1	11.0	6.3	16756	99257335
Hydro MPC-E 2 CRIE15-5	7.5	1+1	15.0	7.9	20114	99208380
Hydro MPC-E 2 CRIE20-1	2.2	1	4.6	1.4	13128	98426983
Hydro MPC-E 2 CRIE20-2	4	1	8.1	3.1	15527	99257337
Hydro MPC-E 2 CRIE20-3	5.5	1	11.0	4.8	16862	99257338
Hydro MPC-E 2 CRIE20-4	7.5	1+1	15.0	6.5	20243	99208432
Hydro MPC-E 2 CRIE20-6	11	1+1	21.4	10.0	23558	99257229

Base plate

1 = Pumps and Control Panel are all mounted on one common base plate.

1 + 1 = Pumps and pipe work fittings are on one base plate and the control panel is mounted on a separate base plate.

Interconnecting electrical connections between pump motors and the control panel to be made on site as required.

Each pump incorporates an integral frequency converter drive, controlled in a cascade operation to maintain a constant pressure.

Additional models are available including special build variants. Please contact your local sales for further information

- User friendly Microprocessor Interface.
- Hands off/Auto operation via Microprocessor Interface.
- VFC's for run/fault indication to building management systems.
- PN16 rated pipework unless otherwise stated.
- 12 Litre Expansion vessel connected to discharge manifold. An additional free standing expansion vessel is recommended for building service applications.

Recommended additional free standing vessel sizes as required against each pump size.

See page 6 for product codes and prices.

CRIE 3, 5, 10	Additional vessel not required.
CRIE 15, 20, 32	80 Litre
CRIE 45, 64	130 Litre
CRIE 95	170 Litre



CATEGORY 3 - HYDRO MPC-E VARIABLE SPEED CRE 2 PUMP BOOSTER SETS - WRAS APPROVED

DN100 STAINLESS STEEL MANIFOLDS | IE5 PERMANENT MAGNET MOTORS

Model	Electric Motor per pump kW	Base Plate	FLC (A) (per pump)	closed Valve(bar)	£	Product Code
400V 3Ph 50Hz						
Hydro MPC-E 2 CRE32-1-1	2.2	1+1	4.6	1.5	14971	98427008
Hydro MPC-E 2 CRE32-1	3	1+1	6.2	2.1	15972	99257339
Hydro MPC-E 2 CRE32-2	7.5	1+1	15.0	4.2	21667	99257340
Hydro MPC-E 2 CRE32-4-2	11	1+1	21.4	7.4	25818	99208521

DN100 STAINLESS STEEL MANIFOLDS

400V 3Ph 50Hz	£	Product Code
Hydro MPC-E 2 CRE32-5-2	29313	98427028

DN150 STAINLESS STEEL MANIFOLDS | IE5 PERMANENT MAGNET MOTORS

400V 3Ph 50Hz	£	Product Code
Hydro MPC-E 2 CRE45-1-1	21161	99257341
Hydro MPC-E 2 CRE45-1	23744	99257250
Hydro MPC-E 2 CRE45-2-2	27657	99257253
Hydro MPC-E 2 CRE45-2	31176	98427048
Hydro MPC-E 2 CRE45-3	36545	98427053
Hydro MPC-E 2 CRE45-4-2	39569	98427058
Hydro MPC-E 2 CRE64-1-1	23495	99257257
Hydro MPC-E 2 CRE64-1	27867	99257260

DN150 STAINLESS STEEL MANIFOLDS

400V 3Ph 50Hz	£	Product Code
Hydro MPC-E 2 CRE64-2-2	30713	98427078
Hydro MPC-E 2 CRE64-2-1	36171	98427083
Hydro MPC-E 2 CRE64-3-2	38770	98427088
Hydro MPC-E 2 CRE64-3-1	POA	98427093
Hydro MPC-E 2 CRE64-3	POA	98427098

DN200 STAINLESS STEEL MANIFOLDS

400V 3Ph 50Hz	£	Product Code
Hydro MPC-E 2 CRE95-1-1		Please contact Grundfos
Hydro MPC-E 2 CRE95-1		Please contact Grundfos
Hydro MPC-E 2 CRE95-2-2		Please contact Grundfos
Hydro MPC-E 2 CRE95-2-1		Please contact Grundfos
Hydro MPC-E 2 CRE95-2		Please contact Grundfos
Hydro MPC-E 2 CRE95-3-2		Please contact Grundfos
Hydro MPC-E 2 CRE95-3-1		Please contact Grundfos
Hydro MPC-E 2 CRE95-4-2		Please contact Grundfos

Additional models are available including special build variants. Please contact your local sales for further information

- User friendly Microprocessor Interface.
- Run/trip Indication.
- Hands off/Auto operation via Microprocessor Interface.
- VFC's for run/fault indication to building management systems.
- PN16 rated pipework unless otherwise stated.
- 12 Litre Expansion vessel connected to discharge manifold. An additional free standing expansion vessel is recommended for building service applications.

Each pump incorporates an integral frequency converter drive, controlled in a cascade operation to maintain a constant pressure.

Recommended additional free standing vessel sizes as required against each pump size.

See page 6 for product codes and prices.

CRIE 3, 5, 10	Additional vessel not required.
CRIE 15, 20, 32	80 Litre
CRE 45, 64	130 Litre
CRE 95	170 Litre

MPC systems with pumps 30kW and above have fixed speed pumps with cabinet mounted CUE frequency converters



CATEGORY 3 - HYDRO MPC-E VARIABLE SPEED CRiE 3 PUMP BOOSTER SETS- WRAS APPROVED

2" STAINLESS STEEL MANIFOLDS | IE5 PERMANENT MAGNET MOTORS

230V 1Ph 50Hz Model	Electric Motor per pump kW	Base Plate	FLC (A) (per pump)	closed Valve(bar)	£	Product Code
Hydro MPC-E 3 CRIE3-2	0.37	1	2.4	1.8	11376	98426891
Hydro MPC-E 3 CRIE3-4	0.55	1	2.4	3.6	11687	98426894
Hydro MPC-E 3 CRIE3-5	0.75	1	4.5	4.3	12116	98426897
Hydro MPC-E 3 CRIE3-8	1.1	1	6.6	7.0	12772	98426900
Hydro MPC-E 3 CRIE5-2	0.55	1	3.4	1.8	11626	98426909
Hydro MPC-E 3 CRIE5-4	1.1	1	6.6	3.7	12327	98426912

2.5" STAINLESS STEEL MANIFOLDS | IE5 PERMANENT MAGNET MOTORS

230V 1Ph 50Hz					£	Product Code
Hydro MPC-E 3 CRIE10-1	0.55	1	3.4	1.0	13832	98426924

2" STAINLESS STEEL MANIFOLDS | IE5 PERMANENT MAGNET MOTORS

400V 3Ph 50Hz					£	Product Code
Hydro MPC-E 3 CRIE3-11	1.5	1	3.3	10.0	14646	98426903
Hydro MPC-E 3 CRIE5-9	1.5	1	3.3	4.8	15722	98426918
Hydro MPC-E 3 CRIE5-5	2.2	1	4.6	8.6	14107	98426915
Hydro MPC-E 3 CRIE5-12	3	1	6.2	11.4	16962	99208246

DN80 STAINLESS STEEL MANIFOLDS | IE5 PERMANENT MAGNET MOTORS

400V 3Ph 50Hz					£	Product Code
Hydro MPC-E 3 CRIE10-2	1.5	1	3.3	2.2	16022	98426929
Hydro MPC-E 3 CRIE10-3	2.2	1	4.6	3.4	17550	98426934
Hydro MPC-E 3 CRIE10-5	3	1	6.2	5.7	18775	99257342
Hydro MPC-E 3 CRIE10-6	4	1	8.1	6.9	20855	99208289
Hydro MPC-E 3 CRIE10-9	5.5	1	11.0	10.4	23466	99257269

DN100 STAINLESS STEEL MANIFOLDS | IE5 PERMANENT MAGNET MOTORS

400V 3Ph 50Hz					£	Product Code
Hydro MPC-E 3 CRIE15-1	1.5	1	3.3	1.4	16445	98426954
Hydro MPC-E 3 CRIE15-2	3	1	6.2	3.0	19161	99257343
Hydro MPC-E 3 CRIE15-3	4	1	8.1	4.6	21217	99257345
Hydro MPC-E 3 CRIE15-4	5.5	1	11.0	6.3	23590	99257346
Hydro MPC-E 3 CRIE15-5	7.5	1+1	15.0	7.9	27954	99208381
Hydro MPC-E 3 CRIE20-1	2.2	1	4.6	1.4	18048	98426984
Hydro MPC-E 3 CRIE20-2	4	1	8.1	3.1	21348	99257347
Hydro MPC-E 3 CRIE20-3	5.5	1	11.0	4.8	23751	99257348
Hydro MPC-E 3 CRIE20-4	7.5	1+1	15.0	6.5	28147	99208434
Hydro MPC-E 3 CRIE20-6	11	1+1	21.4	10.0	34523	99257266

Base plate

1 = Pumps and Control Panel are all mounted on one common base plate.

1 + 1 = Pumps and pipe work fittings are on one base plate and the control panel is mounted on a separate base plate.

Additional models are available including special build variants. Please contact your local sales for further information

Each pump incorporates an integral frequency converter drive, controlled in a cascade operation to maintain a constant pressure. *

- User friendly Microprocessor Interface.
- Run/trip Indication.
- Hands off/Auto operation via Microprocessor Interface.
- VFC's for run/fault indication to building management systems.
- PN16 rated pipework unless otherwise stated.
- 12 Litre Expansion vessel connected to discharge manifold. An additional free standing expansion vessel is recommended for building service applications.

Recommended additional free standing vessel sizes as required against each pump size.

See page 6 for product codes and prices.

CRiE 3, 5, 10	Additional vessel not required.
CRiE 15, 20, 32	80 Litre
CRiE 45, 64	130 Litre
CRiE 95	170 Litre



CATEGORY 3 - HYDRO MPC-E VARIABLE SPEED CRE 3 PUMP BOOSTER SETS - WRAS APPROVED

DN150 STAINLESS STEEL MANIFOLDS | IE5 PERMANENT MAGNET MOTORS

400V 3Ph 50Hz Model	Electric Motor per pump kW	Base Plate	FLC (A) (per pump)	closed Valve(bar)	£	Product Code
Hydro MPC-E 3 CRE32-1-1	2.2	1+1	4.6	1.5	20837	98427009
Hydro MPC-E 3 CRE32-1	3	1+1	6.2	2.1	22021	99257753
Hydro MPC-E 3 CRE32-2	7.5	1+1	15.0	4.2	30542	99257754
Hydro MPC-E 3 CRE32-4-2	11	1+1	21.4	7.4	38171	99208522

DN150 STAINLESS STEEL MANIFOLDS

400V 3Ph 50Hz					£	Product Code
Hydro MPC-E 3 CRE32-5-2	15	1+1	28.7	9.6	43420	98427029

DN200 STAINLESS STEEL MANIFOLDS | IE5 PERMANENT MAGNET MOTORS

400V 3Ph 50Hz					£	Product Code
Hydro MPC-E 3 CRE45-1-1	5.5	1+1	11.0	3.1	29849	99257758
Hydro MPC-E 3 CRE45-1	7.5	1+1	15.0	3.7	33282	99257760
Hydro MPC-E 3 CRE45-2-2	11	1+1	21.4	5.9	40554	99257761
Hydro MPC-E 3 CRE45-2	15	1+1	28.7	7.4	45841	98427049
Hydro MPC-E 3 CRE45-3	18.5	1+1	34.1	10.9	51996	98427054
Hydro MPC-E 3 CRE45-4-2	22	1+1	40.0	13.0	56852	98427059
Hydro MPC-E 3 CRE64-1-1	7.5	1+1	15.0	3.2	32908	99257774
Hydro MPC-E 3 CRE64-1	11	1+1	21.4	4.4	40874	99257794

DN200 STAINLESS STEEL MANIFOLDS

400V 3Ph 50Hz						£	Product Code
Hydro MPC-E 3 CRE64-2-2	15	1+1	28.7	5.8	45148	98427079	
Hydro MPC-E 3 CRE64-2-1	18.5	1+1	34.1	7.3	POA	98427084	
Hydro MPC-E 3 CRE64-3-2	22	1+1	40.0	9.8	POA	98427089	
Hydro MPC-E 3 CR64-3-1	30	1+1	61.0	12.8	POA	98427094	
Hydro MPC-E 3 CR64-3	30	1+1	61.0	11.0	POA	98427099	

DN250 STAINLESS STEEL MANIFOLDS

400V 3Ph 50Hz					£	Product Code
Hydro MPC-E 3 CRE95-1-1	11	1+1	21.4	2.1	Please contact Grundfos	
Hydro MPC-E 3 CRE95-1	7.5	1+1	28.7	3.0	Please contact Grundfos	
Hydro MPC-E 3 CRE95-2-2	15	1+1	34.1	4.2	Please contact Grundfos	
Hydro MPC-E 3 CRE95-2-1	22	1+1	40.0	5.3	Please contact Grundfos	
Hydro MPC-E 3 CR95-2	30	1+1	61.0	10.0	Please contact Grundfos	
Hydro MPC-E 3 CR95-3-2	30	1+1	73.0	11.6	Please contact Grundfos	
Hydro MPC-E 3 CR95-3-1	37	1+1	73.0	13.2	Please contact Grundfos	
Hydro MPC-E 3 CR95-4-2	45	1+1	90.0	16.4	Please contact Grundfos	

- User friendly Microprocessor Interface.
- Run/trip Indication.
- Hands off/Auto operation via Microprocessor Interface.
- VFC's for run/fault indication to building management systems.
- PN16 rated pipework unless otherwise stated.
- 12 Litre Expansion vessel connected to discharge manifold. An additional free standing expansion vessel is recommended for building service applications.

Each pump incorporates an integral frequency converter drive, controlled in a cascade operation to maintain a constant pressure. *

Recommended additional free standing vessel sizes as required against each pump size.

See page 6 for product codes and prices.

CRIE 3, 5, 10	Additional vessel not required.
CRIE 15, 20, 32	80 Litre
CRE 45, 64	130 Litre
CRE 95	170 Litre

* MPC systems with pumps 30KW and above have fixed speed pumps with cabinet mounted CUE frequency converters



CATEGORY 3 - HYDRO MPC-E VARIABLE SPEED CRIE 4 PUMP BOOSTER SETS - WRAS APPROVED

2.5" STAINLESS STEEL MANIFOLDS | IE5 PERMANENT MAGNET MOTORS

230V 1Ph 50Hz Model	Electric Motor per pump kW	Base Plate	FLC (A) (per pump)	closed Valve(bar)	£	Product Code
Hydro MPC-E 4 CRIE3-2	0.37	1	2.4	1.8	13169	98426892
Hydro MPC-E 4 CRIE3-4	0.55	1	2.4	3.6	13582	98426895
Hydro MPC-E 4 CRIE3-5	0.75	1	4.5	4.3	14164	98426898
Hydro MPC-E 4 CRIE3-8	1.1	1	6.6	7.0	15423	98426901
Hydro MPC-E 4 CRIE5-2	0.55	1	3.4	1.8	13502	98426910
Hydro MPC-E 4 CRIE5-4	1.1	1	6.6	3.7	14830	98426913

DN80 STAINLESS STEEL MANIFOLDS | IE5 PERMANENT MAGNET MOTORS

230V 1Ph 50Hz					£	Product Code
Hydro MPC-E 4 CRIE10-1	0.55	1	3.4	1.0	16185	98426925

2.5" STAINLESS STEEL MANIFOLDS | IE5 PERMANENT MAGNET MOTORS

400V 3Ph 50Hz					£	Product Code
Hydro MPC-E 4 CRIE3-11	1.5	1	3.3	10.0	17561	98426904
Hydro MPC-E 4 CRIE5-5	1.5	1	3.3	4.8	16843	98426916
Hydro MPC-E 4 CRIE5-9	2.2	1	4.6	8.6	19040	98426919
Hydro MPC-E 4 CRIE5-12	3	1	6.2	11.4	20646	99208247

DN80 STAINLESS STEEL MANIFOLDS | IE5 PERMANENT MAGNET MOTORS

400V 3Ph 50Hz					£	Product Code
Hydro MPC-E 4 CRIE10-2	1.5	1	3.3	2.2	19131	98426930
Hydro MPC-E 4 CRIE10-3	2.2	1	4.6	3.4	21213	98426935
Hydro MPC-E 4 CRIE10-5	3	1	6.2	5.7	22798	99257826
Hydro MPC-E 4 CRIE10-6	4	1	8.1	6.9	25581	99208294
Hydro MPC-E 4 CRIE10-9	5.5	1	11.0	10.4	29057	99208312

DN100 STAINLESS STEEL MANIFOLDS | IE5 PERMANENT MAGNET MOTORS

400V 3Ph 50Hz					£	Product Code
Hydro MPC-E 4 CRIE15-1	1.5	1	3.3	1.4	20425	98426955
Hydro MPC-E 4 CRIE15-2	3	1	6.2	3.0	24042	99257844
Hydro MPC-E 4 CRIE15-3	4	1	8.1	4.6	26792	99257845
Hydro MPC-E 4 CRIE15-4	5.5	1	11.0	6.3	29949	99257846
Hydro MPC-E 4 CRIE15-5	7.5	1+1	15.0	7.9	36677	99208383
Hydro MPC-E 4 CRIE20-1	2.2	1	4.6	1.4	22602	98426985
Hydro MPC-E 4 CRIE20-2	4	1	8.1	3.1	26964	99257848
Hydro MPC-E 4 CRIE20-3	5.5	1	11.0	4.8	30164	99257849
Hydro MPC-E 4 CRIE20-4	7.5	1+1	15.0	6.5	36935	99208436
Hydro MPC-E 4 CRIE20-6	11	1+1	21.4	10.0	43828	99257272

Additional models are available including special build variants. Please contact your local sales for further information

MPC systems with pumps 30KW and above have fixed speed pumps with cabinet mounted CUE frequency converters

- User friendly Microprocessor Interface.
- Run/trip Indication.
- Hands off/Auto operation via Microprocessor Interface.
- VFC's for run/fault indication to building management systems.
- PN16 rated pipework unless otherwise stated.
- 12 Litre Expansion vessel connected to discharge manifold.

An additional free standing expansion vessel is recommended for building service applications. See page 6 for product codes and prices.

CRIE 3, 5, 10	Additional vessel not required.
CRIE 15, 20, 32	80 Litre
CRE 45, 64	130 Litre
CRE 95	170 Litre

Each pump incorporates an integral frequency converter drive, controlled in a cascade operation to maintain a constant pressure. *



CATEGORY 3 - HYDRO MPC-E VARIABLE SPEED CRE 4 PUMP BOOSTER SETS - WRAS APPROVED
DN150 STAINLESS STEEL MANIFOLDS | IE5 PERMANENT MAGNET MOTORS

400V 3Ph 50Hz Model	Electric Motor per pump kW	Base Plate	FLC (A) (per pump)	closed Valve(bar)	£	Product Code
Hydro MPC-E 4 CRE32-1-1	2.2	1+1	4.6	1.5	26504	98427010
Hydro MPC-E 4 CRE32-1	3	1+1	6.2	2.1	28036	99257854
Hydro MPC-E 4 CRE32-2	7.5	1+1	15.0	4.2	40565	99257858
Hydro MPC-E 4 CRE32-4-2	11	1+1	21.4	7.4	POA	99208523

DN150 STAINLESS STEEL MANIFOLDS

400V 3Ph 50Hz					£	Product Code
Hydro MPC-E 4 CRE32-5-2	15	1+1	28.7	9.6	POA	98427030

DN200 STAINLESS STEEL MANIFOLDS | IE5 PERMANENT MAGNET MOTORS

400V 3Ph 50Hz					£	Product Code
Hydro MPC-E 4 CRE45-1-1	5.5	1+1	11.0	3.1	38192	99257859
Hydro MPC-E 4 CRE45-1	7.5	1+1	15.0	3.7	43935	99257873
Hydro MPC-E 4 CRE45-2-2	11	1+1	21.4	5.9	POA	99257875

DN200 STAINLESS STEEL MANIFOLDS

400V 3Ph 50Hz					£	Product Code
Hydro MPC-E 4 CRE45-2	15	1+1	28.7	7.4	POA	98427050
Hydro MPC-E 4 CRE45-3	18.5	1+1	34.1	10.9	POA	98427055
Hydro MPC-E 4 CRE45-4-2	22	1+1	40.0	13.0	POA	98427060

DN200 STAINLESS STEEL MANIFOLDS | IE5 PERMANENT MAGNET MOTORS

400V 3Ph 50Hz					£	Product Code
Hydro MPC-E 4 CRE64-1-1	7.5	1+1	15.0	3.2	43435	99257880
Hydro MPC-E 4 CRE64-1	11	1+1	21.4	4.4	POA	99257882

DN200 STAINLESS STEEL MANIFOLDS

400V 3Ph 50Hz					£	Product Code
Hydro MPC-E 4 CRE64-2-2	15	1+1	28.7	3.2	POA	98427080
Hydro MPC-E 4 CRE64-2-1	18.5	1+1	34.1	4.4	POA	98427085
Hydro MPC-E 4 CRE64-3-2	22	1+1	40.0	9.8	POA	98427090
Hydro MPC-E 4 CRE64-3-1	30	1+1	61.0	12.8	POA	98427095
Hydro MPC-E 4 CRE64-3	30	1+1	61.0	11.0	POA	98427100

DN250 STAINLESS STEEL MANIFOLDS | IE5 PERMANENT MAGNET MOTORS

400V 3Ph 50Hz					£	Product Code
Hydro MPC-E 4 CRE95-1-1	11	1+1	21.4	2.1		Please contact Grundfos
Hydro MPC-E 4 CRE95-1	7.5	1+1	28.7	3.0		Please contact Grundfos

DN250 STAINLESS STEEL MANIFOLDS

400V 3Ph 50Hz					£	Product Code
Hydro MPC-E 4 CRE95-2-2	15	1+1	34.1	4.2		Please contact Grundfos
Hydro MPC-E 4 CRE95-2-1	22	1+1	40.0	5.3		Please contact Grundfos
Hydro MPC-E 4 CRE95-2	30	1+1	61.0	10.0		Please contact Grundfos
Hydro MPC-E 4 CRE95-3-2	30	1+1	73.0	11.6		Please contact Grundfos
Hydro MPC-E 4 CRE95-3-1	37	1+1	73.0	13.2		Please contact Grundfos
Hydro MPC-E 4 CRE95-4-2	45	1+1	90.0	16.4		Please contact Grundfos

Additional models are available including special build variants. Please contact your local sales for further information

***MPC systems with pumps 30KW and above have fixed speed pumps with cabinet mounted CUE frequency converters**

- User friendly Microprocessor Interface.
- Run/trip Indication.
- Hands off/Auto operation via Microprocessor Interface.
- VFC's for run/fault indication to building management systems.
- PN16 rated pipework unless otherwise stated.
- 12 Litre Expansion vessel connected to discharge manifold.

An additional free standing expansion vessel is recommended for building service applications. See page 6 for product codes and prices.

CRiE 3,5,10	Additional vessel not required.
CRiE 15, 20, 32	80 Litre
CRE 45, 64	130 Litre
CRE 95	170 Litre

Each pump incorporates an integral frequency converter drive, controlled in a cascade operation to maintain a constant pressure. *



CATEGORY 3 - HYDRO MPC-E VARIABLE SPEED CRE/IE 5 PUMP BOOSTER SETS -WRAS APPROVED
DN100 STAINLESS STEEL MANIFOLDS | IE5 PERMANENT MAGNET MOTORS

230V 1Ph 50Hz Model	Electric Motor per pump kW	Base Plate	FLC (A) (per pump)	closed Valve(bar)	£	Product Code
Hydro MPC-E 5 CRIE10-1	0.55	1+1	3.4	1.0	22257	98426926

DN100 STAINLESS STEEL MANIFOLDS | IE5 PERMANENT MAGNET MOTORS

400V 3Ph 50Hz					£	Product Code
Hydro MPC-E 5 CRIE10-2	1.5	1+1	3.3	2.2	24461	98426931
Hydro MPC-E 5 CRIE10-3	2.2	1+1	4.6	3.4	26962	98426936
Hydro MPC-E 5 CRIE10-5	3	1+1	6.2	5.7	29113	99257905
Hydro MPC-E 5 CRIE10-6	4	1+1	8.1	6.9	32561	99208298
Hydro MPC-E 5 CRIE10-9	5.5	1+1	11.0	10.4	37750	99208335

DN150 STAINLESS STEEL MANIFOLDS | IE5 PERMANENT MAGNET MOTORS

400V 3Ph 50Hz					£	Product Code
Hydro MPC-E 5 CRIE15-1	1.5	1+1	3.3	1.4	26671	98426956
Hydro MPC-E 5 CRIE15-2	3	1+1	6.2	3.0	31263	99257908
Hydro MPC-E 5 CRIE15-3	4	1+1	8.1	4.6	34667	99257909
Hydro MPC-E 5 CRIE15-4	5.5	1+1	11.0	6.3	39460	99257911
Hydro MPC-E 5 CRIE15-5	7.5	1+1	15.0	7.9	47454	99208384
Hydro MPC-E 5 CRIE20-1	2.2	1+1	4.6	1.4	29293	98426986
Hydro MPC-E 5 CRIE20-2	4	1+1	8.1	3.1	34884	99257923
Hydro MPC-E 5 CRIE20-3	5.5	1+1	11.0	4.8	39727	99257926
Hydro MPC-E 5 CRIE20-4	7.5	1+1	15.0	6.5	47775	99208438
Hydro MPC-E 5 CRIE20-6	11	1+1	21.4	10.0	POA	99257305
Hydro MPC-E 5 CRE32-1-1	2.2	1+1	4.6	1.5	34571	98427011
Hydro MPC-E 5 CRE32-1	3	1+1	6.2	2.1	36658	99257929
Hydro MPC-E 5 CRE32-2	7.5	1+1	15.0	4.2	POA	99257930
Hydro MPC-E 5 CRE32-4-2	11	1+1	21.4	7.4	POA	99208524

DN150 STAINLESS STEEL MANIFOLDS

400V 3Ph 50Hz					£	Product Code
Hydro MPC-E 5 CRE32-5-2	15	1+1	28.7	9.6	POA	98427031

DN200 STAINLESS STEEL MANIFOLDS | IE5 PERMANENT MAGNET MOTORS

400V 3Ph 50Hz					£	Product Code
Hydro MPC-E 5 CRE45-2-2	11	1+1	21.4	4.4	POA	99257932

DN200 STAINLESS STEEL MANIFOLDS

400V 3Ph 50Hz					£	Product Code
Hydro MPC-E 5 CRE45-2	15	1+1	28.7	5.6	POA	98427051
Hydro MPC-E 5 CRE45-3	18.5	1+1	34.1	8.5	POA	98427056
Hydro MPC-E 5 CRE45-4-2	22	1+1	40.0	10.0	POA	98427061

DN200 STAINLESS STEEL MANIFOLDS | IE5 PERMANENT MAGNET MOTORS

400V 3Ph 50Hz					£	Product Code
Hydro MPC-E 5 CRE64-1-1	7.5	1+1	15.0	3.2	POA	99257935
Hydro MPC-E 5 CRE64-1	11	1+1	21.4	4.4	POA	99257938

DN200 STAINLESS STEEL MANIFOLDS

400V 3Ph 50Hz					£	Product Code
Hydro MPC-E 5 CRE64-2-2	15	1+1	28.7	3.2	POA	98427081
Hydro MPC-E 5 CRE64-2-1	18.5	1+1	34.1	4.4	POA	98427086
Hydro MPC-E 5 CRE64-3-2	22	1+1	40.0	7.8	POA	98427091
Hydro MPC-E 5 CR64-3-1	30	1+1	61.0	12.8	POA	98427096
Hydro MPC-E 5 CR64-3	30	1+1	61.0	11.0	POA	98427101

DN300 STAINLESS STEEL MANIFOLDS | IE5 PERMANENT MAGNET MOTORS

400V 3Ph 50Hz					£	Product Code
Hydro MPC-E 5 CRE95-1-1	11	1+1	21.4	2.1		Please contact Grundfos

DN300 STAINLESS STEEL MANIFOLDS

400V 3Ph 50Hz					£	Product Code
Hydro MPC-E 5 CRE95-1	7.5	1+1	28.7	3.0		Please contact Grundfos
Hydro MPC-E 5 CRE95-2-2	15	1+1	34.1	4.2		Please contact Grundfos
Hydro MPC-E 5 CRE95-2-1	22	1+1	40.0	5.3		Please contact Grundfos
Hydro MPC-E 5 CR95-2	30	1+1	61.0	10.0		Please contact Grundfos
Hydro MPC-E 5 CR95-3-2	30	1+1	73.0	11.6		Please contact Grundfos
Hydro MPC-E 5 CR95-3-1	37	1+1	73.0	13.2		Please contact Grundfos
Hydro MPC-E 5 CR95-4-2	45	1+1	90.0	16.4		Please contact Grundfos

Please see page 21 for additional information



CATEGORY 3 - HYDRO MPC-E VARIABLE SPEED CRE/IE 6 PUMP BOOSTER SETS -WRAS APPROVED

DN100 STAINLESS STEEL MANIFOLDS | IE5 PERMANENT MAGNET MOTORS

230V 1Ph 50Hz Model	Electric Motor per pump kW	Base Plate	FLC (A) (per pump)	closed Valve(bar)	£	Product Code
Hydro MPC-E 6 CRIE10-1	0.55	1+1	3.4	1.0	POA	98426927

DN100 STAINLESS STEEL MANIFOLDS | IE5 PERMANENT MAGNET MOTORS

400V 3Ph 50Hz					£	Product Code
Hydro MPC-E 6 CRIE10-2	1.5	1+1	3.3	2.2	30520	98426932
Hydro MPC-E 6 CRIE10-3	2.2	1+1	4.6	3.4	33542	98426937
Hydro MPC-E 6 CRIE10-5	3	1+1	6.2	5.7	34180	99257940
Hydro MPC-E 6 CRIE10-6	4	1+1	8.1	6.9	38344	99208300
Hydro MPC-E 6 CRIE10-9	5.5	1+1	11.0	10.4	44716	99208338

DN150 STAINLESS STEEL MANIFOLDS | IE5 PERMANENT MAGNET MOTORS

400V 3Ph 50Hz					£	Product Code
Hydro MPC-E 6 CRIE15-3	4	1+1	8.1	4.6	39808	99257942
Hydro MPC-E 6 CRIE15-4	5.5	1+1	11.0	6.3	45420	99257954
Hydro MPC-E 6 CRIE15-5	7.5	1+1	15.0	7.9	POA	99208416
Hydro MPC-E 6 CRIE20-1	2.2	1+1	4.6	1.4	35275	98426987
Hydro MPC-E 6 CRIE20-2	4	1+1	8.1	3.1	40066	99257958
Hydro MPC-E 6 CRIE20-3	5.5	1+1	11.0	4.8	46025	99257959
Hydro MPC-E 6 CRIE20-4	7.5	1+1	15.0	6.5	POA	99208441
Hydro MPC-E 6 CRIE20-6	11	1+1	21.4	10.0	POA	99257307
Hydro MPC-E 6 CRE32-1-1	2.2	1+1	4.6	1.5	41312	98427012
Hydro MPC-E 6 CRE32-1	3	1+1	6.2	2.1	41870	99258004
Hydro MPC-E 6 CRE32-2	7.5	1+1	15.0	4.2	POA	99258009
Hydro MPC-E 6 CRE32-4-2	11	1+1	21.4	7.4	POA	99208525

DN150 STAINLESS STEEL MANIFOLDS

400V 3Ph 50Hz					£	Product Code
Hydro MPC-E 6 CRE32-5-2	15	1+1	28.7	9.6	POA	98427032

DN200 STAINLESS STEEL MANIFOLDS | IE5 PERMANENT MAGNET MOTORS

400V 3Ph 50Hz					£	Product Code
Hydro MPC-E 6 CRE45-2-2	11	1+1	21.4	4.4	POA	99258011

DN200 STAINLESS STEEL MANIFOLDS

400V 3Ph 50Hz					£	Product Code
Hydro MPC-E 6 CRE45-2	15	1+1	28.7	5.6	POA	98427052
Hydro MPC-E 6 CRE45-3	18.5	1+1	34.1	8.5	POA	98427057
Hydro MPC-E 6 CRE45-4-2	22	1+1	40.0	10.0	POA	98427062

DN200 STAINLESS STEEL MANIFOLDS | IE5 PERMANENT MAGNET MOTORS

400V 3Ph 50Hz					£	Product Code
Hydro MPC-E 6 CRE64-1-1	7.5	1+1	15.0	3.2	POA	99258024
Hydro MPC-E 6 CRE64-1	11	1+1	21.4	4.4	POA	99258025

DN200 STAINLESS STEEL MANIFOLDS

400V 3Ph 50Hz					£	Product Code
Hydro MPC-E 6 CRE64-2-2	15	1+1	28.7	3.2	POA	98427082
Hydro MPC-E 6 CRE64-2-1	18.5	1+1	34.1	4.4	POA	98427087
Hydro MPC-E 6 CRE64-3-2	22	1+1	40.0	7.8	POA	98427092
Hydro MPC-E 6 CRE64-3-1	30	1+1	61.0	12.8	POA	98427097
Hydro MPC-E 6 CRE64-3	30	1+1	61.0	11.0	POA	98427102

DN350 STAINLESS STEEL MANIFOLDS | IE5 PERMANENT MAGNET MOTORS

400V 3Ph 50Hz					£	Product Code
Hydro MPC-E 6 CRE95-1-1	11	1+1	21.4	2.1		Please contact Grundfos

DN350 STAINLESS STEEL MANIFOLDS

400V 3Ph 50Hz					£	Product Code
Hydro MPC-E 6 CRE95-1	7.5	1+1	28.7	3.0		Please contact Grundfos
Hydro MPC-E 6 CRE95-2-2	15	1+1	34.1	4.2		Please contact Grundfos
Hydro MPC-E 6 CRE95-2-1	22	1+1	40.0	5.3		Please contact Grundfos
Hydro MPC-E 6 CR95-2	30	1+1	61.0	10.0		Please contact Grundfos
Hydro MPC-E 6 CR95-3-2	30	1+1	73.0	11.6		Please contact Grundfos
Hydro MPC-E 6 CR95-3-1	37	1+1	73.0	13.2		Please contact Grundfos
Hydro MPC-E 6 CR95-4-2	45	1+1	90.0	16.4		Please contact Grundfos

Additional models are available including special build variants. Please contact your local sales for further information

* MPC systems with pumps 30KW and above have fixed speed pumps with cabinet mounted CUE frequency converters

- User friendly Microprocessor Interface.
- Run/trip Indication.
- Hands off/Auto operation via Microprocessor Interface.
- VFC's for run/fault indication to building management systems.
- PN16 rated pipework unless otherwise stated.
- 12 Litre Expansion vessel connected to discharge manifold.

An additional free standing expansion vessel is recommended for building service applications.
See page 6 for product codes and prices.

CRIE 3,5,10	Additional vessel not required.
CRIE 15, 20, 32	80 Litre
CRE 45, 64	130 Litre
CRE 95	170 Litre

Each pump incorporates an integral frequency converter drive, controlled in a cascade operation to maintain a constant pressure.



CATEGORY 3 - WATER TRANSFER SETS WITH 50 GALLON BREAK TANKS**BYEPAC CM3**

230V 1Ph 50Hz Model	Tank Size		£	Product Code
	(Gallons)	(Litres)		
Byepac CM3-3	50	227	3197	97762774
Byepac CM3-4	50	227	3225	97762775
Byepac CM3-5	50	227	3212	97762776
Byepac CM3-6	50	227	3312	97762777

BYEPAC CM5

230V 1Ph 50Hz			£	Product Code
Byepac CM5-3	50	227	3199	97762782
Byepac CM5-4	50	227	3285	97762783
Byepac CM5-5	50	227	3392	97762784
Byepac CM5-6	50	227	3775	97762785

BYEPAC CM3

400V 3Ph 50Hz			£	Product Code
Byepac CM3-3	50	227	4676	97806427
Byepac CM3-4	50	227	4703	97806428
Byepac CM3-5	50	227	4735	97806429
Byepac CM3-6	50	227	4785	97806430

BYEPAC CM5

400V 3Ph 50Hz			£	Product Code
Byepac CM5-3	50	227	4725	97806446
Byepac CM5-4	50	227	4802	97806447
Byepac CM5-5	50	227	4853	97806448
Byepac CM5-6	50	227	4897	97806449

CATEGORY 3 - WATER TRANSFER SETS WITH 100 GALLON BREAK TANKS**BYEPAC CM3**

230V 1Ph 50Hz Model	Tank Size		£	Product Code
	(Gallons)	(Litres)		
Byepac CM3-3	100	454	4292	97762778
Byepac CM3-4	100	454	4320	97762779
Byepac CM3-5	100	454	4302	97762780
Byepac CM3-6	100	454	4358	97762781

BYEPAC CM5

230V 1Ph 50Hz			£	Product Code
Byepac CM5-3	100	454	4343	97762786
Byepac CM5-4	100	454	4429	97762787
Byepac CM5-5	100	454	4487	97762788
Byepac CM5-6	100	454	4867	97762789

BYEPAC CM3

400V 3Ph 50Hz			£	Product Code
Byepac CM3-3	100	454	5771	97806441
Byepac CM3-4	100	454	5799	97806443
Byepac CM3-5	100	454	5830	97806444
Byepac CM3-6	100	454	5886	97806445

BYEPAC CM5

400V 3Ph 50Hz			£	Product Code
Byepac CM5-3	100	454	5,821	97806450
Byepac CM5-4	100	454	5897	97806451
Byepac CM5-5	100	454	5949	97806452
Byepac CM5-6	100	454	5992	97806453

CATEGORY 3 - HYDRO GTI -S SINGLE PUMP FIXED SPEED BOOSTER SETS

Model 240v 1ph 50Hz	Electric Motor per pump kW	Closed Valve (bar)	£	Product Code
HYDRO GTI-S 1 x CM 3-4	0.50	3.7	5,396	98491903
HYDRO GTI-S 1 x CM 3-5	0.50	4.6	5,828	98491905
HYDRO GTI-S 1 x CM 3-6	0.67	5.6	5,956	98491906
HYDRO GTI-S 1 x CM 5-2	0.50	1.9	5,642	98491908
HYDRO GTI-S 1 x CM 5-3	0.50	2.8	5,071	98491909
HYDRO GTI-S 1 x CM 5-4	0.67	3.7	5,979	98491923
HYDRO GTI-S 1 x CM 5-5	0.90	4.7	6,101	98491924
HYDRO GTI-S 1 x CM 5-6	1.30	5.6	6,529	98491926

Packaged booster set complete with 60 Litre CAT5 Break Tank and an electrical panel complete with pump mcb's.

CATEGORY 3 - HYDRO GTI -S TWIN PUMP FIXED SPEED BOOSTER SETS

Model 240v 1ph 50Hz	Electric Motor per pump kW	Closed Valve (bar)	£	Product Code
HYDRO GTI-S 2 x CM 3-4	0.50	3.7	7,346	98491927
HYDRO GTI-S 2 x CM 3-5	0.50	4.6	8,557	98491931
HYDRO GTI-S 2 x CM 3-6	0.67	5.6	8,110	98491932
HYDRO GTI-S 2 x CM 5-3	0.50	2.8	7,732	98491936
HYDRO GTI-S 2 x CM 5-4	0.67	3.7	7,702	98491937
HYDRO GTI-S 2 x CM 5-5	0.90	4.7	7,927	98491939
HYDRO GTI-S 2 x CM 5-6	1.30	5.6	8,698	98491940

Packaged booster set complete with 60 Litre CAT5 Break Tank and an electrical panel complete with pump mcb's.

NB: 1 bar minimum suction pressure required.

Pump isolation valves included.
(Not shown in photograph)



CATEGORY 3 - HYDRO GTI -E SINGLE PUMP VARIABLE SPEED BOOSTER SETS IE5 PERMANENT MAGNET MOTORS

Model 240v 1ph 50Hz	Electric Motor per pump kW	Closed Valve (bar)	£	Product Code
HYDRO GTI-E 1 x CME 3-2	0.55	2.6	7,232	98649885
HYDRO GTI-E 1 x CME 3-3	1.10	4.0	7,329	98649808
HYDRO GTI-E 1 x CME 3-4	1.10	5.3	8,090	98649806
HYDRO GTI-E 1 x CME 3-5	1.10	6.6	7,963	98649805
HYDRO GTI-E 1 x CME 5-2	1.10	2.7	6,870	98649804
HYDRO GTI-E 1 x CME 5-3	1.10	4.0	8,443	98649803

Model 415v 3ph 50Hz	Electric Motor per pump kW	Closed Valve (bar)	£	Product Code
HYDRO GTI-E 1 x CME 3-6	1.50	8.0	8,738	98649801
HYDRO GTI-E 1 x CME 3-7	1.50	9.2	7,834	98649790
HYDRO GTI-E 1 x CME 3-8	2.20	10.5	9,007	98696453
HYDRO GTI-E 1 x CME 3-9	2.20	12.0	9,299	98649785
HYDRO GTI-E 1 x CME 5-4	1.50	5.4	8,553	98649784
HYDRO GTI-E 1 x CME 5-5	2.20	6.7	8866	98649782
HYDRO GTI-E 1 x CME 5-6	2.20	8.1	9,299	98649781
HYDRO GTI-E 1 x CME 5-7	3.00	9.4	8,736	98649780
HYDRO GTI-E 1 x CME 5-8	3.00	10.7	10,591	98649778

Packaged booster set complete with 60 Litre CAT5 Break Tank and an electrical panel complete with pump mcb's.

CATEGORY 3 - HYDRO GTI -E TWIN PUMP VARIABLE SPEED BOOSTER SETS IE5 PERMANENT MAGNET MOTORS

Model 240v 1ph 50Hz	Electric Motor per pump kW	Closed Valve (bar)	£	Product Code
HYDRO GTI-E 2 x CME 3-2	0.55	2.6	10,448	98785590
HYDRO GTI-E 2 x CME 3-3	1.10	4.0	10,776	98780755
HYDRO GTI-E 2 x CME 3-4	1.10	5.3	10,919	98785597
HYDRO GTI-E 2 x CME 3-5	1.10	6.6	11,170	98785598
HYDRO GTI-E 2 x CME 5-2	1.10	2.7	11,862	98785621
HYDRO GTI-E 2 x CME 5-3	1.10	4.0	12,163	98785622

Model 415v 3ph 50Hz	Electric Motor per pump kW	Closed Valve (bar)	£	Product Code
HYDRO GTI-E 2 x CME 3-6	1.50	8.0	13,613	98785611
HYDRO GTI-E 2 x CME 3-7	1.50	9.2	13,730	98785613
HYDRO GTI-E 2 x CME 3-8	2.20	10.5	10,720	98785618
HYDRO GTI-E 2 x CME 3-9	2.20	12.0	10,914	98785619
HYDRO GTI-E 2 x CME 5-4	1.50	5.4	12,435	98649905
HYDRO GTI-E 2 x CME 5-5	2.20	6.7	13,602	98785623
HYDRO GTI-E 2 x CME 5-6	2.20	8.1	13,797	98649890
HYDRO GTI-E 2 x CME 5-7	3.00	9.4	14,647	98785624
HYDRO GTI-E 2 x CME 5-8	3.00	10.7	15,292	98649888

Packaged booster set complete with 60 Litre CAT5 Break Tank and an electrical panel complete with pump mcb's.

Each pump incorporates an integral frequency converter drive, controlled in a duty /standby operation to maintain a constant pressure.

NB: 1 bar minimum suction pressure required.



CATEGORY 3 - Grundfos PRESSURISATION UNITS (240V 1PH ONLY)**MINI TOP UP PRESSURISATION UNITS (WALL MOUNTING)**

Model	Description	£	Product Code
PHT A N130	Single pump pressurisation unit 3.0 bar - PN10	1,332	99264904
PHT A N230	Twin pump pressurisation unit 3.0 bar - PN10	1,415	99264947

MIDI TOP UP PRESSURISATION UNITS (WALL MOUNTING)

Model	Description	£	Product Code
PHT A D125	Single pump pressurisation unit 2.5 bar - PN10	1,679	99264948
PHT A D150	Single pump pressurisation unit 5.0 bar - PN10	1,726	99264949
PHT A D225	Twin pump pressurisation unit 2.5 bar - PN10	1,928	99264951
PHT A D250	Twin pump pressurisation unit 5.0 bar - PN10	2,001	99264952

STANDARD TOP UP PRESSURISATION UNITS (FLOOR STANDING)

Model	Description	£	Product Code
PHT A F125	Single pump pressurisation unit 2.5 bar - PN10	1,511	99264963
PHT A F150	Single pump pressurisation unit 5.0 bar - PN10	1,636	99264964
PHT A F180	Single pump pressurisation unit 8.0 bar - PN10	2,804	99264965
PHT A F225	Twin pump pressurisation unit 2.5 bar - PN10	1,789	99264966
PHT A F250	Twin pump pressurisation unit 5.0 bar - PN10	2,010	99264967
PHT A F280	Twin pump pressurisation unit 8.0 bar - PN10	4,347	99264968

STANDARD TWIN SYSTEM TOP UP PRESSURISATION UNITS (FLOOR STANDING)

Model	Description	£	Product Code
PHT A T225	Twin pump pressurisation unit 2.5 bar - PN10	3,038	99264969
PHT A T250	Twin pump pressurisation unit 5.0 bar - PN10	3,366	99264970

ACCESSORY - PHT A FIELDBUS COMMUNICATION CARD KIT (EACH KIT CONTAINS A CIM CARD)

Model	Description	£	Product Code
MODBUS	Communication card Kit. Including CIM200	324	99366919
BACNET	Communication card Kit. Including CIM300	324	99366907

STANDARD TOP UP PRESSURISATION AND GLYCOL UNITS (FLOOR STANDING)

Model	Description	£	Product Code
PHT A V225	Twin pump pressurisation and Glycol unit 2.5 bar - PN10	4,044	99264977
PHT A V250	Twin pump pressurisation and Glycol unit 5.0 bar - PN10	4,595	99264979

MINI MONOPRESS PRESSURISATION UNITS (WALL MOUNTING)

Model	Description	£	Product Code
MINI MONOPRESS	Basic Set, designed for wall mounting	735	MMP50801
MINI MONOPRESS	Basic Set (wall mounting) with high/low pressure switches for others to wire and no lamps.	929	MMP50802
MINI DUOPRESS	Basic Set (wall mounting) with high/low pressure switches for others to wire and no lamps.	1,048	MDP50802



CATEGORY 3 - SPIROTECH PRESSURISATION UNITS C/W Integral Break Tank**SPILLBACK SYSTEM WITH AN INTEGRAL TOP UP UNIT (FLOOR STANDING) WITH DEGASSER 240v 1PH**

Model	Description	£	Product Code
PHP A-1-D - 4.0 bar	Spillback system with top up unit 4.0 bar - PN6	13,271	99535093
PHP A-1-D - 5.6 bar	Spillback system with top up unit 5.6 bar - PN6	13,271	99535095

SPILLBACK SYSTEM WITH AN INTEGRAL TOP UP UNIT (FLOOR STANDING)WITH DEGASSER and Binary Board 240v 1PH

Model	Description	£	Product Code
PHP A-1-D-BB - 4.0 bar	Spillback system with top up unit Degasser and Binary Board 4.0 bar - PN6	14,107	99535104
PHP A-1-D-BB - 5.6 bar	Spillback system with top up unit Degasser and Binary Board 5.6 bar - PN6	14,107	99535105

Model Description**SPILLBACK SYSTEM WITH AN INTEGRAL TOP UP UNIT (FLOOR STANDING) 415v 3PH**

Model	Description	£	Product Code
PHP A-4 - 6.2 bar	Spillback system with top up unit 6.2 bar - PN10	19,475	99535096
PHP A-6 - 10.1 bar	Spillback system with top up unit 10.1 bar - PN16	22,145	99535097
PHP A-8 - 16.0 bar	Spillback system with top up unit 16.0 bar - PN25	27,545	99535098
PHP A-9 - 11.0 bar	Spillback system with top up unit 11.0 bar - PN16	26,061	99535099

SPILLBACK SYSTEM WITH AN INTEGRAL TOP UP UNIT (FLOOR STANDING)WITH DEGASSER 415v 3PH

Model	Description	£	Product Code
PHP A-4-D - 6.2 bar	Spillback system with top up unit and Degasser 6.2 bar - PN10	20,498	99535100
PHP A-6-D - 10.1 bar	Spillback system with top up unit and Degasser 10.1 bar - PN16	23,168	99535101
PHP A-8-D - 16.0 bar	Spillback system with top up unit and Degasser 16.0 bar - PN25	28,296	99535102
PHP A-9-D - 11.0 bar	Spillback system with top up unit and Degasser 11.0 bar - PN16	26,887	99535103

SPILLBACK SYSTEM WITH AN INTEGRAL TOP UP UNIT (FLOOR STANDING) and Binary Board 415v 3PH

Model	Description	£	Product Code
PHP A-4-BB - 6.2 bar	Spillback system with top up unit and Binary Board 6.2 bar - PN10	20,312	99535107
PHP A-6-BB - 10.1 bar	Spillback system with top up unit and Binary Board 10.1 bar - PN16	22,982	99535108
PHP A-8-BB - 16.0 bar	Spillback system with top up unit and Binary Board 16.0 bar - PN25	28,382	99535109
PHP A-9-BB - 11.0 bar	Spillback system with top up unit and Binary Board 11.0 bar - PN16	26,898	99535111

SPILLBACK SYSTEM WITH AN INTEGRAL TOP UP UNIT (FLOOR STANDING)WITH DEGASSER and Binary Board 415v 3PH

Model	Description	£	Product Code
PHP A-4-D-BB - 6.2 bar	Spillback system with top up unit Degasser and Binary Board 6.2 bar - PN10	21,335	99535124
PHP A-6-D-BB - 10.1 bar	Spillback system with top up unit Degasser and Binary Board 10.1 bar - PN16	24,005	99535125
PHP A-8-D-BB - 16.0 bar	Spillback system with top up unit Degasser and Binary Board 16.0 bar - PN25	29,132	99535126
PHP A-9-D-BB - 11.0 bar	Spillback system with top up unit Degasser and Binary Board 11.0 bar - PN16	27,722	99535127



CATEGORY 3 - SPIROTECH DEGASSER UNITS

DEGASSER UNITS

Model	Description	Voltage	Phase	£	Product Code
PHD A-140- 1.0- 4.0 bar	Degassing system with top up unit 1.0 -4.0 bar - PN6	240V	1PH	3,954	99576611
PHD A-160- 2.5- 6.0 bar	Degassing system with top up unit 2.5- 6.0 bar - PN6	240V	1PH	6,145	99475393
PHD A-1100- 5.0- 10.0 bar	Degassing system with top up unit 5.0- 10.0 bar- PN10	415V	3PH	7,940	99475394
PHD A-1160- 9.0- 16.0 bar	Degassing system with top up unit 9.0- 16.0 bar - PN16	415V	3PH	9,003	99475395

DEGASSER UNITS - WITH INTEGRAL BREAK TANK

Model	Description	£	Product Code
PHD A-140- 1.0- 4.0 bar	Degassing system with top up unit 1.0 -4.0 bar - PN6	4,380	99576612
PHD A-160- 2.5- 6.0 bar	Degassing system with top up unit 2.5- 6.0 bar - PN6	6,819	99576613

DEGASSER UNITS - WITH REFILL

Model	Description	£	Product Code
PHD A-140- 5.0- 10.0 bar	Degassing system with top up unit 5.0- 10.0 bar- PN10	9,003	99576614
PHD A-140- 9.0- 16.0 bar	Degassing system with top up unit 9.0- 16.0 bar - PN16	9,362	99576615



CATEGORY 3 - SPIROTECH PRIMARY AND AUXILIARY MAIN VESSELS - PRESSURLESS

SPILLBACK SYSTEM MAIN VESSELS

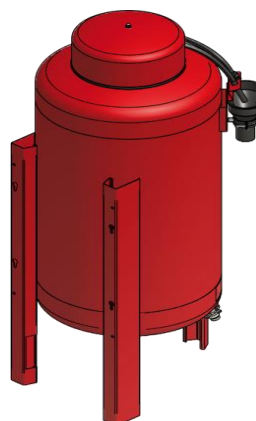
Model	£	Product Code
PHP A Main Vessel 200 L	1,988	99475406
PHP A Main Vessel 300 L	2,205	99475408
PHP A Main Vessel 500 L	2,747	99475409
PHP A Main Vessel 800 L	3,638	99475410
PHP A Main Vessel 1000 L	4,036	99475411
PHP A Main Vessel 1500 L	7,175	99475412
PHP A Main Vessel 2000 L	8,802	99475413
PHP A Main Vessel 2500 L	11,192	99475414
PHP A Main Vessel 3000 L	13,578	99475415
PHP A Main Vessel 4000 L	15,178	99475417
PHP A Main Vessel 5000 L	16,031	99475419
PHP A Main Vessel 10000 L	29,051	99475420

SPILLBACK SYSTEM AUXILIARY VESSELS

Model	£	Product Code
PHP A Aux. Vessel 200 L	1,704	99475421
PHP A Aux. Vessel 300 L	1,755	99475422
PHP A Aux. Vessel 500 L	2,292	99475433
PHP A Aux. Vessel 800 L	3,281	99475434
PHP A Aux. Vessel 1000 L	3,744	99475435
PHP A Aux. Vessel 1500 L	6,964	99475437
PHP A Aux. Vessel 2000 L	8,532	99475438
PHP A Aux. Vessel 2500 L	10,930	99475439
PHP A Aux. Vessel 3000 L	13,329	99478293
PHP A Aux. Vessel 4000 L	14,849	99478294
PHP A Aux. Vessel 5000 L	15,796	99478295
PHP A Aux. Vessel 10000 L	28,284	99478297

PRESSURISATION INTERMEDIATE VESSEL PN10

Model	£	Product Code
PHP A Intermediate Vessel 100 L	1,587	99478298
PHP A Intermediate Vessel 200 L	1,817	99478299
PHP A Intermediate Vessel 350 L	2,409	99478300
PHP A Intermediate Vessel 500 L	2,680	99478302
PHP A Intermediate Vessel 750 L	4,497	99478303
PHP A Intermediate Vessel 1000 L	5,780	99478304



CATEGORY 3 - SPIROTECH PRESSURISATION - AIR SEPARATION

Description	£	Product Code
INLINE AIR SEPARATORS - FLANGE CONNECTIONS - Max temp 110 Deg C		
In line air separator Flanged DN 50 Max. working pressure 10 bar PN16	1,119	99499278
In line air separator Flanged DN 65 Max. working pressure 10 bar PN16	1,154	99499335
In line air separator Flanged DN 80 Max. working pressure 10 bar PN16	1,563	99499336
In line air separator Flanged DN 100 Max. working pressure 10 bar PN16	1,624	99499337
In line air separator Flanged DN 125 Max. working pressure 10 bar PN16	3,219	99499338
In line air separator Flanged DN 150 Max. working pressure 10 bar PN16	3,361	99499339
In line air separator Flanged DN 200 Max. working pressure 10 bar PN16	4,105	99499340
In line air separator Flanged DN 250 Max. working pressure 10 bar PN16	6,956	99499342
In line air separator Flanged DN 300 Max. working pressure 10 bar PN16	11,873	99499353

INLINE DIRT SEPARATORS - FLANGE CONNECTIONS- Max temp 110 Deg C

Description	£	Product Code
In line dirt separator Flanged DN 50 Max. working pressure 10 bar PN16	1,010	99499354
In line dirt separator Flanged DN 65 Max. working pressure 10 bar PN16	1,046	99499355
In line dirt separator Flanged DN 80 Max. working pressure 10 bar PN16	1,466	99475396
In line dirt separator Flanged DN 100 Max. working pressure 10 bar PN16	1,521	99475397
In line dirt separator Flanged DN 125 Max. working pressure 10 bar PN16	2,915	99475398
In line dirt separator Flanged DN 150 Max. working pressure 10 bar PN16	3,039	99475399
In line dirt separator Flanged DN 200 Max. working pressure 10 bar PN16	4,253	99475400
In line dirt separator Flanged DN 250 Max. working pressure 10 bar PN16	7,715	99475401
In line dirt separator Flanged DN 300 Max. working pressure 10 bar PN16	11,362	99475402

INLINE DIRT SEPARATORS - FLANGE CONNECTIONS MAGNETIC- Max temp 110 Deg C

Description	£	Product Code
In line dirt separator Flanged DN 50 Max. working pressure 10 bar PN16 Magnetic	1,209	99529716
In line dirt separator Flanged DN 65 Max. working pressure 10 bar PN16 Magnetic	1,247	99529718
In line dirt separator Flanged DN 80 Max. working pressure 10 bar PN16 Magnetic	1,661	99529719
In line dirt separator Flanged DN 100 Max. working pressure 10 bar PN16 Magnetic	1,757	99529721
In line dirt separator Flanged DN 125 Max. working pressure 10 bar PN16 Magnetic	3,404	99529722
In line dirt separator Flanged DN 150 Max. working pressure 10 bar PN16 Magnetic	3,623	99529723
In line dirt separator Flanged DN 200 Max. working pressure 10 bar PN16 Magnetic	5,400	99529724
In line dirt separator Flanged DN 250 Max. working pressure 10 bar PN16 Magnetic	9,685	99529725
In line dirt separator Flanged DN 300 Max. working pressure 10 bar PN16 Magnetic	13,632	99529726

INLINE AIR AND DIRT SEPARATORS - FLANGE CONNECTIONS- Max temp 110 Deg C

Description	£	Product Code
In line dirt separator Flanged DN 50 Max. working pressure 10 bar PN16	1,394	99499243
In line dirt separator Flanged DN 65 Max. working pressure 10 bar PN16	1,466	99499245
In line dirt separator Flanged DN 80 Max. working pressure 10 bar PN16	1,790	99499246
In line dirt separator Flanged DN 100 Max. working pressure 10 bar PN16	1,965	99499247
In line dirt separator Flanged DN 125 Max. working pressure 10 bar PN16	3,397	99499248
In line dirt separator Flanged DN 150 Max. working pressure 10 bar PN16	3,666	99499249
In line dirt separator Flanged DN 200 Max. working pressure 10 bar PN16	5,319	99499251
In line dirt separator Flanged DN 250 Max. working pressure 10 bar PN16	8,835	99499253
In line dirt separator Flanged DN 300 Max. working pressure 10 bar PN16	15,590	99499254

INLINE AIR AND DIRT SEPARATORS - FLANGE CONNECTIONS MAGNETIC- Max temp 110 Deg C

Description	£	Product Code
In line dirt separator Flanged DN 50 Max. working pressure 10 bar PN16 Magnetic	1,552	99499258
In line dirt separator Flanged DN 65 Max. working pressure 10 bar PN16 Magnetic	1,605	99499259
In line dirt separator Flanged DN 80 Max. working pressure 10 bar PN16 Magnetic	2,029	99499260
In line dirt separator Flanged DN 100 Max. working pressure 10 bar PN16 Magnetic	2,144	99499261
In line dirt separator Flanged DN 125 Max. working pressure 10 bar PN16 Magnetic	3,863	99499262
In line dirt separator Flanged DN 150 Max. working pressure 10 bar PN16 Magnetic	4,225	99499273
In line dirt separator Flanged DN 200 Max. working pressure 10 bar PN16 Magnetic	6,466	99499275
In line dirt separator Flanged DN 250 Max. working pressure 10 bar PN16 Magnetic	11,688	99499276
In line dirt separator Flanged DN 300 Max. working pressure 10 bar PN16 Magnetic	16,964	99499277

Note - The above are Category 4 items for discount purposes.



CATEGORY 3 -Grundfos Vortex Flow Sensors (VFI) for industrial applications

Threaded Conection BSP

Description	EPDM	FKM	Connection	Flowrate M3/h	£	Product Code
VFI/-0.3-6m/1/C/M5.00-X/EG6/SS/07P/AC-1	•		1 1/4" BSP	0.3-6	586	97688334
VFI/-0.3-6m/1/C/M5.00-X/VG6/SS/07P/AC-1		•	1 1/4" BSP	0.3-6	586	97688342
VFI/-0.6-12m/1/C/M5.00-X/EG6/SS/07P/AC-1	•		1 1/4" BSP	0.6-12	676	97688335
VFI/-0.6-12m/1/C/M5.00-X/VG6/SS/07P/AC-1		•	1 1/4" BSP	0.6-12	676	97688343
VFI/-1.3-25m/1/C/M5.00-X/EG6/SS/09P/AC-1	•		1 1/2" BSP	1.3-25	776	97688336
VFI/-1.3-25m/1/C/M5.00-X/VG6/SS/09P/AC-1		•	1 1/2" BSP	1.3-25	776	97688344

5 m connection cable with M12x1 4 -pin connector included

Gaskets included

Union nuts included

Medium: water , glycol water with viscosities

Tube material : stainless steel 1.4408

Temperature: -30 ° C ... 120 ° C , non-freezing (restricted temperature range FKM)

Union Nut material stainless steel 1.4408

Pressure: max. 25 bar

Degree of protection : IP 67 Housing material : Stainless steel 1.4404

Flow measurement accuracy : + / - 1.5% FS (0 - 100 ° C)

Power supply: 11 - 30 VDC

Output: 4 to 20 mA



NOTE - All list prices above are subject to Category 4 discount terms

CATEGORY 3 - Grundfos Vortex Flow Sensors (VFI) for industrial applications

Flanged connection Cast Iron

Description	EPDM	FKM	Connection	Flowrate M3/h	£	Product Code
VFI/-0.3-6m/1/C/M5.00-X/EG6/SG/30F/AC-1	•		DN 25/32	0.3-6	751	97686127
VFI/-0.3-6m/1/C/M5.00-X/VG6/SG/30F/AC-1		•	DN 25/32	0.3-6	751	97686128
VFI/-0.6-12m/1/C/M5.00-X/EG6/SG/30F/AC-1	•		DN 25/32	0.6-12	864	97686129
VFI/-0.6-12m/1/C/M5.00-X/VG6/SG/30F/AC-1		•	DN 25/32	0.6-12	864	97686130
VFI/-1.3-25m/1/C/M5.00-X/EG6/SG/30F/AC-1	•		DN 25/32	1.3-25	994	97686141
VFI/-1.3-25m/1/C/M5.00-X/VG6/SG/30F/AC-1		•	DN 25/32	1.3-25	994	97686142
VFI/-2-40m/1/C/M5.00-X/EG6/SG/31F/AC-1	•		DN 40	2.0-40	1145	97686143
VFI/-2-40m/1/C/M5.00-X/VG6/SG/31F/AC-1		•	DN 40	2.0-40	1145	97686144
VFI/-3.2-64m/1/C/M5.00-X/EG6/SG/32F/AC-1	•		DN 50	3.2-64	1284	97686145
VFI/-3.2-64m/1/C/M5.00-X/VG6/SG/32F/AC-1		•	DN 50	3.2-64	1284	97686146
VFI/5.2-104m/1/C/M5.00-X/EG6/SG/33F/AC-1	•		DN 65	5.2-104	1372	97686147
VFI/5.2-104m/1/C/M5.00-X/VG6/SG/33F/AC-1		•	DN 65	5.2-104	1372	97686148
VFI/-8-160m/1/C/M5.00-X/EG6/SG/35F/AC-1	•		DN 80	8.0-160	1393	97686149
VFI/-8-160m/1/C/M5.00-X/VG6/SG/35F/AC-1		•	DN 80	8.0-160	1393	97686150
VFI/-12-240m/1/C/M5.00-X/EG6/SG/37F/AC-1	•		DN 100	12.0-240	1459	97686151
VFI/-12-240m/1/C/M5.00-X/VG6/SG/37F/AC-1		•	DN 100	12.0-240	1459	97686152

Flanged connection Stainless Steel

Description	EPDM	FKM	Connection	Flowrate M3/h	£	Product Code
VFI/-0.3-6m/1/C/M5.00-X/EG6/SS/30F/AC-1	•		DN 25/32	0.3-6	909	97688293
VFI/-0.3-6m/1/C/M5.00-X/VG6/SS/30F/AC-1		•	DN 25/32	0.3-6	909	97688294
VFI/-0.6-12m/1/C/M5.00-X/EG6/SS/30F/AC-1	•		DN 25/32	0.6-12	1037	97688295
VFI/-0.6-12m/1/C/M5.00-X/VG6/SS/30F/AC-1		•	DN 25/32	0.6-12	1037	97688296
VFI/-1.3-25m/1/C/M5.00-X/EG6/SS/30F/AC-1	•		DN 25/32	1.3-25	1195	97688297
VFI/-1.3-25m/1/C/M5.00-X/VG6/SS/30F/AC-1		•	DN 25/32	1.3-25	1195	97688298
VFI/-2-40m/1/C/M5.00-X/EG6/SS/31F/AC-1	•		DN 40	2.0-40	1342	97688299
VFI/-2-40m/1/C/M5.00-X/VG6/SS/31F/AC-1		•	DN 40	2.0-40	1342	97688300
VFI/-3.2-64m/1/C/M5.00-X/EG6/SS/32F/AC-1	•		DN 50	3.2-64	1403	97688301
VFI/-3.2-64m/1/C/M5.00-X/VG6/SS/32F/AC-1		•	DN 50	3.2-64	1403	97688302
VFI/5.2-104m/1/C/M5.00-X/EG6/SS/33F/AC-1	•		DN 65	5.2-104	1493	97688303
VFI/5.2-104m/1/C/M5.00-X/VG6/SS/33F/AC-1		•	DN 65	5.2-104	1493	97688304
VFI/-8-160m/1/C/M5.00-X/EG6/SS/35F/AC-1	•		DN 80	8.0-160	1517	97688305
VFI/-8-160m/1/C/M5.00-X/VG6/SS/35F/AC-1		•	DN 80	8.0-160	1517	97688306
VFI/-12-240m/1/C/M5.00-X/EG6/SS/37F/AC-1	•		DN 100	12.0-240	1605	97688308
VFI/-12-240m/1/C/M5.00-X/VG6/SS/37F/AC-1		•	DN 100	12.0-240	1605	97688309

5 m connection cable with M12x1 4 -pin connector included

Gaskets Included.

Tube material : stainless steel 1.4408

Temperature: -30 °C ... 120 °C , non-freezing (restricted temperature range FKM)

Flange material : Stainless steel 1.4401 or cast iron

Pressure: max. 25 bar

Degree of protection : IP 67 Housing material : Stainless steel 1.4404

Flow measurement accuracy : + / - 1.5% F5 (0 - 100 °C)

Power supply: 11 - 30 VDC



NOTE - All list prices above are subject to Category 4 discount terms

CATEGORY 3 -Grundfos differential pressure sensor DPI and DPI+T with G ½ connection thread for indust

Grundfos differential pressure sensor DPI

Description	EPDM	FKM	Connection	Pressure Rating	£	Product Code
DPI/-0-0.6b/2/C/M2.00-X/EG6/--/03P/SW-1	•		G1/2	0-0.6	380	97747194
DPI/-0-0.6b/2/C/M2.00-X/VG6/--/03P/SW-1		•	G1/2	0-0.6	380	97747215
DPI/-0-1.0b/2/C/M2.00-X/EG6/--/03P/SW-1	•		G1/2	0-1.0	380	97747195
DPI/-0-1.0b/2/C/M2.00-X/VG6/--/03P/SW-1		•	G1/2	0-1.0	380	97747216
DPI/-0-1.6b/2/C/M2.00-X/EG6/--/03P/SW-1	•		G1/2	0-1.6	380	97747196
DPI/-0-1.6b/2/C/M2.00-X/VG6/--/03P/SW-1		•	G1/2	0-1.6	380	97747218
DPI/-0-2.5b/2/C/M2.00-X/EG6/--/03P/SW-1	•		G1/2	0-2.5	380	97747197
DPI/-0-2.5b/2/C/M2.00-X/VG6/--/03P/SW-1		•	G1/2	0-2.5	380	97747219
DPI/-0-4.0b/2/C/M2.00-X/EG6/--/03P/SW-1	•		G1/2	0-4.0	380	97747198
DPI/-0-4.0b/2/C/M2.00-X/VG6/--/03P/SW-1		•	G1/2	0-4.0	380	97747220
DPI/-0-6.0b/2/C/M2.00-X/EG6/--/03P/SW-1	•		G1/2	0-6.0	380	97747199
DPI/-0-6.0b/2/C/M2.00-X/VG6/--/03P/SW-1		•	G1/2	0-6.0	380	97747241
DPI/---0-10b/2/C/M2.00-X/EG6/--/03P/SW-1	•		G1/2	0-10.0	380	97747200
DPI/---0-10b/2/C/M2.00-X/VG6/--/03P/SW-1		•	G1/2	0-10.0	380	97747242
DPI/---0-16b/2/C/M2.00-X/EG6/--/03P/SW-1	•		G1/2	0-16.0	380	97747201
DPI/---0-16b/2/C/M2.00-X/VG6/--/03P/SW-1		•	G1/2	0-16.0	380	97747243

Grundfos differential pressure Plus temperature sensor DPI+T

Description	EPDM	FKM	Connection	Pressure Rating	£	Product Code
DPI/-0-0.6b/2/F/M2.00-X/EG6/--/03P/SW-1	•		G1/2	0-0.6	415	97747202
DPI/-0-0.6b/2/F/M2.00-X/VG6/--/03P/SW-1		•	G1/2	0-0.6	415	97747244
DPI/-0-1.0b/2/F/M2.00-X/EG6/--/03P/SW-1	•		G1/2	0-1.0	415	97747203
DPI/-0-1.0b/2/F/M2.00-X/VG6/--/03P/SW-1		•	G1/2	0-1.0	415	97747245
DPI/-0-1.6b/2/F/M2.00-X/EG6/--/03P/SW-1	•		G1/2	0-1.6	415	97747204
DPI/-0-1.6b/2/F/M2.00-X/VG6/--/03P/SW-1		•	G1/2	0-1.6	415	97747246
DPI/-0-2.5b/2/F/M2.00-X/EG6/--/03P/SW-1	•		G1/2	0-2.5	415	97747205
DPI/-0-2.5b/2/F/M2.00-X/VG6/--/03P/SW-1		•	G1/2	0-2.5	415	97747247
DPI/-0-4.0b/2/F/M2.00-X/EG6/--/03P/SW-1	•		G1/2	0-4.0	415	97747206
DPI/-0-4.0b/2/F/M2.00-X/VG6/--/03P/SW-1		•	G1/2	0-4.0	415	97747249
DPI/-0-6.0b/2/F/M2.00-X/EG6/--/03P/SW-1	•		G1/2	0-6.0	415	97747207
DPI/-0-6.0b/2/F/M2.00-X/VG6/--/03P/SW-1		•	G1/2	0-6.0	415	97747250
DPI/---0-10b/2/F/M2.00-X/EG6/--/03P/SW-1	•		G1/2	0-10.0	415	97747208
DPI/---0-10b/2/F/M2.00-X/VG6/--/03P/SW-1		•	G1/2	0-10.0	415	97747251
DPI/---0-16b/2/F/M2.00-X/EG6/--/03P/SW-1	•		G1/2	0-16.0	415	97747209
DPI/---0-16b/2/F/M2.00-X/VG6/--/03P/SW-1		•	G1/2	0-16.0	415	97747252

Temperature measuring accuracy (RPI with temperature):

+ / - 1 °C (0 to 80 °C)

+ / - 2 °C (0 to 100 °C)

Degree of protection : IP 67

The electrical connection is via an M12 x 1 4-pin 2 m connection cable is included.

The Pressure connection is made via a G ½ connection with external thread and a connection 7/16 UNF for the second (for example, via a capillary). A 1000 mm long capillary tube is included.

Power supply: 12.5-30 V (4-20 mA) / 16.6-30 V (0-10 V)

Output signal: 4-20 mA two wire DPI

0 - 10 V for differential pressure and temperature at DPI

Materials: stainless steel 1.4404 , EPDM

Dimensions: Ø 39 x 40 mm



CATEGORY 3 - DIFFERENTIAL TEMPERATURE TRANSDUCER KIT - FOR SEALED CIRCUIT APPLICATIONS

Item	Temperature range	£	Product Code
Honsberg ETSD	0 to 20°C differential	820	96409362
Honsberg ETSD	0 to 50°C differential	1236	96409363

Temperature operating range: -25 to +105°C.

Output signal: 4-20mA

NOTE - All list prices above are subject to Category 4 discount terms

CATEGORY 3 -Grundfos relative pressure sensor RPI and RPI+T with G 1/2 connection thread for industrial application

Grundfos Relative pressure sensor RPI

Description	EPDM	FKM	Connection	Pressure Rating	£	Product Code
RPI/-0-0.6b/1/C/M2.00-X/EG6/--/03P/SD-1	•		G1/2	0-0.6	210	97748907
RPI/-0-0.6b/1/C/M2.00-X/VG6/--/03P/SD-1		•	G1/2	0-0.6	210	97748948
RPI/-0-1.0b/1/C/M2.00-X/EG6/--/03P/SD-1	•		G1/2	0-1.0	210	97748908
RPI/-0-1.0b/1/C/M2.00-X/VG6/--/03P/SD-1		•	G1/2	0-1.0	210	97748949
RPI/-0-1.6b/1/C/M2.00-X/EG6/--/03P/SD-1	•		G1/2	0-1.6	210	97748909
RPI/-0-1.6b/1/C/M2.00-X/VG6/--/03P/SD-1		•	G1/2	0-1.6	210	97748950
RPI/-0-2.5b/1/C/M2.00-X/EG6/--/03P/SD-1	•		G1/2	0-2.5	210	97748910
RPI/-0-2.5b/1/C/M2.00-X/VG6/--/03P/SD-1		•	G1/2	0-2.5	210	97748951
RPI/-0-4.0b/1/C/M2.00-X/EG6/--/03P/SD-1	•		G1/2	0-4.0	210	97748921
RPI/-0-4.0b/1/C/M2.00-X/VG6/--/03P/SD-1		•	G1/2	0-4.0	210	97748952
RPI/-0-6.0b/1/C/M2.00-X/EG6/--/03P/SD-1	•		G1/2	0-6.0	210	97748922
RPI/-0-6.0b/1/C/M2.00-X/VG6/--/03P/SD-1		•	G1/2	0-6.0	210	97748953
RPI/-0-10b/1/C/M2.00-X/EG6/--/03P/SD-1	•		G1/2	0-10.0	210	97748923
RPI/-0-10b/1/C/M2.00-X/VG6/--/03P/SD-1		•	G1/2	0-10.0	210	97748954
RPI/-0-16b/1/C/M2.00-X/EG6/--/03P/SD-1	•		G1/2	0-16.0	210	97748924
RPI/-0-16b/1/C/M2.00-X/VG6/--/03P/SD-1		•	G1/2	0-16.0	210	97748955
RPI/-0-25b/1/C/M2.00-X/EG6/--/03P/SD-1	•		G1/2	0-25.0	210	97748925
RPI/-0-25b/1/C/M2.00-X/VG6/--/03P/SD-1		•	G1/2	0-25.0	210	97748956

Grundfos Relative pressure sensor Plus temperature sensor RPI+T

Description	EPDM	FKM	Connection	Pressure Rating	£	Product Code
RPI/-0-0.6b/1/F/M2.00-X/EG6/--/03P/SD-1	•		G1/2	0-0.6	235	97748926
RPI/-0-0.6b/1/F/M2.00-X/VG6/--/03P/SD-1		•	G1/2	0-0.6	235	97748957
RPI/-0-1.0b/1/F/M2.00-X/EG6/--/03P/SD-1	•		G1/2	0-1.0	235	97748928
RPI/-0-1.0b/1/F/M2.00-X/VG6/--/03P/SD-1		•	G1/2	0-1.0	235	97748958
RPI/-0-1.6b/1/F/M2.00-X/EG6/--/03P/SD-1	•		G1/2	0-1.6	235	97748929
RPI/-0-1.6b/1/F/M2.00-X/VG6/--/03P/SD-1		•	G1/2	0-1.6	235	97748959
RPI/-0-2.5b/1/F/M2.00-X/EG6/--/03P/SD-1	•		G1/2	0-2.5	235	97748930
RPI/-0-2.5b/1/F/M2.00-X/VG6/--/03P/SD-1		•	G1/2	0-2.5	235	97748960
RPI/-0-4.0b/1/F/M2.00-X/EG6/--/03P/SD-1	•		G1/2	0-4.0	235	97748941
RPI/-0-4.0b/1/F/M2.00-X/VG6/--/03P/SD-1		•	G1/2	0-4.0	235	97748961
RPI/-0-6.0b/1/F/M2.00-X/EG6/--/03P/SD-1	•		G1/2	0-6.0	235	97748942
RPI/-0-6.0b/1/F/M2.00-X/VG6/--/03P/SD-1		•	G1/2	0-6.0	235	97748962
RPI/-0-10b/1/F/M2.00-X/EG6/--/03P/SD-1	•		G1/2	0-10.0	235	97748944
RPI/-0-10b/1/F/M2.00-X/VG6/--/03P/SD-1		•	G1/2	0-10.0	235	97748963
RPI/-0-16b/1/F/M2.00-X/EG6/--/03P/SD-1	•		G1/2	0-16.0	235	97748945
RPI/-0-16b/1/F/M2.00-X/VG6/--/03P/SD-1		•	G1/2	0-16.0	235	97748964
RPI/-0-25b/1/F/M2.00-X/EG6/--/03P/SD-1	•		G1/2	0-25.0	235	97748946
RPI/-0-25b/1/F/M2.00-X/VG6/--/03P/SD-1		•	G1/2	0-25.0	235	97748965

Grundfos Relative pressure sensor Plus temperature sensor RPI+T

				£	Product Code
RPI/-0-16b/2/F/M2.00-X/EG6/--/03P/SD-1	•	G1/2	0-16.0	208	98355521

Temperature measuring accuracy (RPI with temperature):

+ / - 1 C (0 to 80 ° C)

+ / - 2 C (0 to 100 ° C)

Degree of protection : IP 67

The electrical connection is via an M12 x 1 4-pin plug. A 2 m long connection cable is included.

Power supply: 12.5-30 V (4-20 mA) / 16.6-30 V (0-10 V)

Output signal: 4-20 mA two wire / RPI

0 - 10 V for pressure and temperature / RPI

Materials: stainless steel 1.4404 , EPDM

Dimensions: Ø 39 x 40 mm



NOTE - All list prices above are subject to Category 4 discount terms

CATEGORY 3 - Grundfos Industrial Sensors Accessories

Grundfos Industrial Sensor Connection Cable

Description	Connection		£	Product Code
Cable M2.00-X/-B-1	M12	2 Metres	29	98374260
Cable M5.00-X/-B-1	M12	5 Meters	42	98374271



Grundfos Industrial Sensors. Extension Kit For Direct connection To Medium and Large CR pumps.

Description	Qty per pack	£	Product Code
IDS DPI/RPI Extension Kit	1	17	98420667

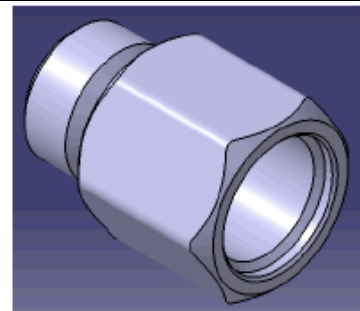
		Size											
Family		1	3	5	10	15	20	32	45	64	90	120	150
	CRE	✓	✓	✓	✓	!	!	!	✗	✗	✗	✗	✗
	CRIE	✓	✓	✓	✓	!	!						
	CRNE	✓	✓	✓	✓	!	!	!	✗	✗	✗	✗	✗

Legend:

✓ Does not require adaptor.

! Only requires adaptor if transmitter and coupling guard touches, creating noise.

✗ Does always require adaptor.



Grundfos Industrial Sensors. Differential Pressure Capillary Tube.

Description	Qty per pack	£	Product Code
Capillary tube UNS7/16", 1w 1m length	1	17	98469210



Grundfos Sensor power supplies

Model	£	Product Code
SI 001 PSU	219	96915820
SI 010 CNV	146	96983684



NOTE - All list prices above are subject to Category 4 discount terms

Notes

CONDITIONS OF SALE AND SERVICE

The Customer's attention is particularly drawn to the provisions of condition 13 (Warranty and Limitation of Liability)

1. INTERPRETATION

- 1.1 The definitions and rules of interpretation in this condition apply in these Conditions.

Agreement: the contract between Grundfos and the Customer for the supply of Equipment and/or Services in accordance with the Order and these Conditions
Business Day: a day other than a Saturday, Sunday or bank or public holiday in England when banks in London are open for non-automated business.

CDM Regulations: the Construction (Design and Management) Regulations 2015
Conditions: these terms and conditions as amended from time to time in accordance with condition 19.

Customer: the person, firm or company who purchases Equipment and/or Services from Grundfos.

Data Protection Legislation: all legislation and regulatory requirements in force from time to time relating to the use of personal data and the privacy of electronic communications, including, without limitation (i) any data protection legislation from time to time in force in the UK including the Data Protection Act 2018 or any successor legislation, as well as (ii) the General Data Protection Regulation (EU) 2016/679 and any other directly applicable European Union regulation relating to data protection and privacy (for so long as and to the extent that the law of the European Union has legal effect in the UK).

Delivery Location: the location set out in the Order for delivery of the Equipment and/or Services or such other location as the parties may agree.

Equipment: all equipment, materials, goods and/or products, or any part or parts thereof, supplied by Grundfos to the Customer under this Agreement or used by Grundfos or its subcontractors in the supply of the Services.

Equipment Specification: any specification for the Equipment, including any relevant plans or drawings, that is agreed in writing by the Customer and Grundfos.

Event of Default: any occurrence of the events set out in condition 17.1 or 17.2.

Force Majeure Event: acts, events, omissions or accidents beyond its reasonable control, including (without limitation) strikes, lock-outs or other industrial disputes (whether involving any supplier, contractor or agent of Grundfos or any other party beyond its reasonable control), failure of a utility service or transport network, act of God, war or threat of war, sabotage, riot, civil commotion, malicious damage, compliance with any law or governmental order, rule, regulation or direction, import or export embargoes, accident, breakdown of plant or machinery, fire, flood, storm or default of suppliers or subcontractors, difficulties in obtaining raw materials, labour, fuel, parts or machinery.

Grundfos: Grundfos Pumps Limited (Company No: 00805960) whose registered office is at Grovebury Road, Leighton Buzzard, Bedfordshire LU7 4TL.

Health and Safety File: the health and safety file required by the CDM Regulations.

In-put Material: all documents, information, tools and materials of the Customer required by Grundfos for the proper provision of the Services.

Intellectual Property Rights: patents, rights to inventions, copyright and related rights, trade marks, business names and domain names, rights in get-up, goodwill and the right to sue for passing off, rights in designs, database rights, rights to use, and protect the confidentiality of, confidential information (including know-how), and all other intellectual property rights, in each case whether registered or unregistered and including all applications and rights to apply for and be granted, renewals or extensions of, and rights to claim priority from, such rights and all similar or equivalent rights or forms of protection which subsist or will subsist now or in the future in any part of the world.

Maintenance Schedule: the maintenance schedule attached to the Order setting out the Services to be supplied by Grundfos to the Customer.

Order: the service support agreement or site visit request form in each case on Grundfos' standard terms (whichever is applicable) including any schedules attached to the service support agreement or site visit request form.

Payment Schedule: the payment schedule attached to the Order setting out the charges applicable for the provision of the Services by Grundfos to the Customer.

Premium Service: the service package in accordance with Grundfos' terms as set out in the Agreement.

Quotation: a written quotation issued by Grundfos.

Services: the services to be provided by Grundfos under this Agreement as set out in the Order or site visit request form together with any other services which Grundfos provides, or agrees to provide, to the Customer.

Site visit request form: Grundfos' Site Visit and Commissioning Request Form, or the equivalent internet log, which the Customer completes.

Time and Materials Rate: the rates set out in the Order.

Warranty: (Subject to condition 5.5) the warranty provided by Grundfos in respect of the Services as set out in condition 8.4 and Equipment as set out in condition 5.1 of these Conditions (as applicable).

Warranty Period: for product codes UPS2, UPS3, ALPHA1, ALPHA2, ALPHA3 and SCALIA2 the warranty period shall be 5 years from the date of the manufacture and in all other cases the warranty period shall be 24 months from installation or 30 months from the date of manufacture (whichever expires soonest).

- 1.2 Headings in these conditions shall not affect their interpretation.

- 1.3 A person includes a natural person, corporate or unincorporated body (whether or not having separate legal personality).

- 1.4 The schedules and annexes form part of this Agreement.

- 1.5 A reference to writing or written includes fax and email and electronic chat messages.

- 1.6 Any obligation in this Agreement on a person not to do something includes, without limitation, an obligation not to agree, allow, permit or acquiesce in that thing being done.

- 1.7 References to schedules and annexes are to the schedules and annexes of the Order.

- 1.8 A reference to a statute or statutory provision is a reference to it as amended or re-enacted. A reference to a statutory provision includes all subordinate legislation made under that statute or statutory provision.

2. Basis of Agreement

- 2.1 The Order constitutes an offer by the Customer to purchase Equipment and/or Services in accordance with these Conditions.

- 2.2 The Order shall only be deemed to be accepted on the earlier of:

(a) an authorised representative of Grundfos issues written acceptance of the Order; or

(b) Grundfos delivers the Equipment and/or commences providing Services to the Customer in line with the Order, at which point and on which the date this Agreement shall come into existence.

- 2.3 Any samples, drawings, descriptive matter or advertising issued by Grundfos and any descriptions of the Equipment or illustrations or descriptions of the Services contained in Grundfos' catalogues or brochures are issued or published for the sole purpose of giving an approximate idea of the Services and/or Equipment described in them.

No warranty or guarantee is given for their accuracy and they shall not form part of this Agreement or have any contractual force.

- 2.4 These Conditions shall:

(a) apply to and be incorporated into this Agreement;

(b) prevail over any other terms that the Customer seeks to impose or incorporate; and

(c) prevail over any terms or conditions implied by law, trade custom, practice or course of dealing between Grundfos, the Customer or otherwise.

- 2.5 These Conditions are subject to any terms, conditions and/or provisions set out in the Order. In the event of any conflict between the terms of these Conditions and the terms of the Order, the provisions of the Order shall prevail, but any special terms granted in respect of any one Order are not applicable to any subsequent Order without the express consent in writing by Grundfos.

- 2.6 Quotations shall only be valid if issued in writing.

- 2.7 Any Quotations are given on the basis that no Agreement shall come into existence except in accordance with condition 2.2. Any Quotation is valid for a period of 30 days from its date (unless otherwise agreed by Grundfos), provided that Grundfos has not previously withdrawn it.

- 2.8 All of these Conditions shall apply to the supply of both Equipment and Services except where application to one or the other is specified.

- 2.9 Any special terms agreed to by Grundfos for any Order shall not apply to any subsequent Order without the express agreement of an authorised representative of Grundfos.

- 2.10 The Customer is responsible for ensuring the accuracy of the terms of the Order and for providing to Grundfos in good time any necessary information required by Grundfos to enable Grundfos to perform its obligations under the Agreement.

- 2.11 Grundfos' minimum order value is £55.00. Orders between £55.00 and £335 for pumps or £130 for Category 4 items will be subject to a £37 handling fee.

3. Equipment

- 3.1 The Equipment is described in Grundfos' catalogues as modified in any Equipment Specification.

- 3.2 Unless confirmed in writing by Grundfos, Grundfos makes no representation as to the suitability of the Equipment for the Customer's particular purpose. The Customer will be responsible for ensuring that the Equipment is suitable for its particular purpose and Grundfos shall have no liability to the Customer if the Equipment is not suitable for the Customer's particular purpose (so far as legally possible).

- 3.3 Grundfos (and/or its subcontractors, suppliers or agents) reserves the right to:

(a) change the design, construction or composition of the Equipment or the materials or equipment used in the Equipment as it shall think fit; and
(b) amend the Equipment Specification of the Equipment if required by any applicable statutory requirements, and shall, in any case, notify the Customer of any such changes (if such changes are effected after this Agreement has come into existence but before the Equipment and/or Services have been fully performed).

- 3.4 Samples of Equipment are available for inspection at Grundfos' offices. The samples are ex-stock at the time of viewing and are without guarantee as to colour or dimensions at the time of delivery. The viewing of a sample does not create a sale by sample.

4. Delivery of Equipment

- 4.1 Grundfos shall deliver the Equipment to the Delivery Location.

- 4.2 Delivery of the Equipment shall be completed on:

(a) the completion of unloading of the Equipment at the Delivery Location or (in the absence of any specified Delivery Location by the Customer) upon Grundfos informing the Customer that the Equipment is ready; or

(b) (if the Customer or its agents and/or representatives elect to unload the Equipment themselves) upon Grundfos placing the Equipment at the disposal of the Customer, its agents or representatives at the agreed point.

- 4.3 Grundfos' obligation under condition 4.1 is limited to delivering the Equipment only as near to the Delivery Location as a safe hard road permits. The Customer is to provide to Grundfos, free of charge, reasonable assistance with unloading (unless the Customer elects to unload the Equipment itself).

- 4.4 Any dates quoted for delivery of the Equipment are approximate only, and the time of delivery is not of the essence. Grundfos shall not be liable for any delay (or any additional costs arising out of the delay) in delivery of the Equipment that is caused by a Force Majeure Event or the Customer's failure to provide Grundfos with adequate delivery instructions or any other instructions that are relevant to the supply of the Equipment.

- 4.5 The Equipment may be delivered in advance of the quoted delivery date upon giving reasonable notice to the Customer.

- 4.6 If the Customer fails to take delivery of the Equipment or fails to give Grundfos adequate delivery instructions at the time stated for delivery (otherwise than by reason of Grundfos' sole fault) then, without prejudice to any other right or remedy available to Grundfos:

(a) delivery of the Equipment shall be deemed to have been completed at 9.00am on the next Business Day following the day on which Grundfos notified the Customer that the Equipment was ready; and

(b) Grundfos may:

(i) Charge a re-delivery fee if delivery is rearranged by Grundfos and the Customer;

(ii) store the Equipment until actual delivery takes place, and charge the Customer for all related costs and expenses (including insurance) of such storage;

(iii) apply Grundfos' returns policy as set out in condition 6; or

(iv) sell the Equipment at the best price readily obtainable and (after deducting all reasonable storage and selling expenses) charge the Customer for any shortfall below the price payable by the Customer for the Equipment and Services (as applicable) under this Agreement.

- 4.7 If the parties have agreed on express delivery, the dates quoted for such delivery and agreed delivery dates are approximate only as delivery may vary due to factors not within Grundfos' reasonable control, e.g. leisurely or delayed customs clearance or other import or export obstacles. The parties agree that time of delivery is not of the essence and that Grundfos shall not be liable for any delay (or any additional costs arising out of the delay) in delivery caused by such events.

- 4.8 Grundfos may deliver the Equipment by instalments.

- 4.9 If Equipment is not received by the customer within 7 days of notification of dispatch by Grundfos or if it is received in a damaged condition or the quantity received differs from the quantity advised by Grundfos the Customer shall notify Grundfos in writing. If such written notice is not received by Grundfos within 10 days of the date of Grundfos' dispatch notification, Grundfos will not be liable in respect of any loss or damaged suffered.

- 4.10 If a proof of delivery is required a £10 handling fee will apply.

- 4.11 Proof of delivery shall only be retained by Grundfos for 3 months following delivery. After 3 months it shall be assumed by both parties that delivery successfully took place unless there is evidence to the contrary.

- 4.12 A £20 handling fee will apply per order to all orders for spares, pump components, spares kits and ancillary items such as flanges, unions etc.

5. **Quality of Equipment**
- 5.1 For the duration of the Warranty Period, Grundfos warrants that the Equipment shall:
- (a) (subject to conditions 5.3 and 5.4) conform in all material respects with the Equipment Specification; and
- (b) be free from defects in design, material and workmanship.
- 5.2 Subject to condition 5.3, if:
- (a) the Customer gives notice in writing during the Warranty Period within 14 days of discovery that some or all of the Equipment does not comply with the Warranty set out in condition 5.1;
- (b) Grundfos is given a reasonable opportunity to examine such Equipment; and
- (c) the Customer (if reasonably asked to do so by Grundfos) returns such Equipment to Grundfos (at Grundfos' cost), then Grundfos shall, at its option, repair or replace the defective Equipment, or refund the price of the defective Equipment in full. Repairs shall only be carried out between 8am and 5pm on Business Days agreed between Grundfos and Customer.
- 5.3 Grundfos shall not be liable for the Equipment's failure to comply with the Warranty if:
- (a) the Customer makes any further use of such Equipment after giving a notice in accordance with condition 5.2 unless otherwise approved by Grundfos (such approval not to be withheld unreasonably);
- (b) the defect arises because the Customer failed to follow Grundfos' or manufacturer's oral or written instructions as to the storage, installation, commissioning, use or maintenance of the Equipment or (if there are none) good trade practice;
- (c) the defect arises as a result of Grundfos following any drawing, design supplied by the Customer or the Equipment Specification;
- (d) the Customer alters, dismantles or repairs such Equipment without the written consent of Grundfos;
- (e) the defect arises as a result of fair wear and tear, wilful damage, negligence, or abnormal working conditions; or
- (f) the Equipment differs from its description as a result of changes made to ensure they comply with applicable statutory or regulatory standards.
- 5.4 Except as provided in this condition 5, Grundfos shall have no liability to the Customer in respect of the Equipment's failure to comply with the Warranty.
- 5.5 The terms of these Conditions shall apply to any repaired or replacement Equipment supplied by Grundfos under condition 5.2 but for the avoidance of doubt, the Warranty Period for any repaired or replaced Equipment shall be 12 months from the date of the repair.
6. **Return of Equipment**
- 6.1 Equipment may not be returned to Grundfos except by the prior written permission of an authorised representative of Grundfos. Contact grundfos-uk@sales.grundfos.com with the original purchase order number to arrange a return. Any such return shall be liable for any handling and restocking fees charged by Grundfos.
- 6.2 All Equipment requested to be returned to Grundfos will be subject to a minimum 35% restocking fee (subject to inspection). Equipment must be returned in its original packaging.
- 6.3 Equipment can only be returned within 6 months of the date of dispatch by Grundfos. All returns will be subject to inspection to ascertain age, condition and type.
- 6.4 Equipment returned without prior authorisation will be refused delivery by Grundfos.
- 6.5 The following Equipment cannot be returned for credit in any circumstance:
- (a) items with a net value of less than £125 (per item);
- (b) repair kits, power cable, engineered to order, third party sourced and obsolete items.
- 6.6 Any Equipment that has been in contact with hazardous liquids must be cleaned, sealed in appropriate packaging, clearly labelled and accompanied by a COSHH certification by the Customer. Any carrier used must be licensed to carry to transport the relevant hazardous liquids.
7. **Title and Risk**
- 7.1 The risk in the Equipment shall pass to the Customer on completion of delivery in accordance with condition 4.
- 7.2 Title to the Equipment shall not pass to the Customer until Grundfos receives payment in full (in cash or cleared funds) for the Equipment and any other equipment or goods that Grundfos has supplied to the Customer in respect of which payment has become due in which case title to the Equipment shall pass at the time of payment of all such sums.
- 7.3 Until title to the Equipment has passed to the Customer, the Customer shall:
- (a) hold the Equipment (or any receipts received from the Customer where the Customer has sold the Equipment) on a fiduciary basis as Grundfos' bailee;
- (b) store the Equipment separately from all other goods held by the Customer (where possible) so that they remain readily identifiable as Grundfos' property;
- (c) not remove, deface or obscure any identifying mark or packaging on or relating to the Equipment (unless reasonably required for the functioning use of the Equipment by the Customer);
- (d) maintain the Equipment in satisfactory condition and keep it insured against all risks for their full price on Grundfos' behalf from the date of delivery;
- (e) notify Grundfos immediately if the Customer becomes subject to any Event of Default;
- (f) give Grundfos such reasonable information relating to the Equipment as Grundfos may require from time to time;
- (g) give Grundfos at least 30 days' notice of its intention to move or relocate the Equipment to a new location. Grundfos may (at Grundfos' sole discretion) supervise the dismantling and removal of the Equipment, and inspect and reinstall the Equipment at the new location. Any supervision and work undertaken in respect of the relocation shall be charged at the prevailing Time and Material Rates and is payable by the Customer in accordance with condition 11; and
- (h) give Grundfos at least 14 days' notice of its intention to take any steps to appoint an administrator.
- 7.4 The Customer may incorporate the Equipment into or with any other goods provided that any new goods incorporating the Equipment shall become the sole and exclusive property of Grundfos and shall be separately stored and marked so as to be identifiable as being manufactured by or containing Equipment belonging to Grundfos.
- 7.5 Subject to condition 7.7, the Customer may resell the Equipment in the ordinary course of its business (but not otherwise) before Grundfos receives payment for the Equipment. However, if the Customer resells the Equipment before that time:
- (a) It does so as principal and not as Grundfos' agent;
- (b) Title to the Equipment shall pass from Grundfos to the Customer immediately before the time at which resale by the Customer occurs.
- 7.6 If before title to the Equipment passes to the Customer the Customer becomes subject to an Event of Default, then, without limiting any other right or remedy Grundfos may have, Grundfos may at any time:
- (a) the Customer's right to resell the Equipment or use it in the ordinary course of its business ceases immediately;
- (b) reasonably require the Customer to deliver up all Equipment in its possession; and
- (c) if the Customer fails to do so promptly, enter any premises of the Customer where the Equipment is stored in order to recover them; and
- (d) the Customer shall pay Grundfos' reasonable costs (including legal costs) for any recovery of the Equipment pursuant to condition 7.7(c).
8. **Supply of Services**
- 8.1 Grundfos shall provide the Services to the Customer in accordance with the Maintenance Schedule in all material respects and in accordance with the duration and timescales specified in the Order.
- 8.2 Grundfos shall use all reasonable endeavours to meet any performance dates for the Services specified in this Agreement, but any such dates shall be estimates only and time shall not be of the essence for the performance of the Services.
- 8.3 Grundfos shall have the right to make any changes to the Services which are necessary to comply with any applicable law or safety requirement, or which do not materially affect the nature or quality of the Services, and Grundfos shall notify the Customer in any such event. If Grundfos requests a change for any other reason, the Customer shall not unreasonably withhold or delay consent to it.
- 8.4 Grundfos warrants to the Customer that the Services will be provided using reasonable care and skill.
- 8.5 Grundfos shall use reasonable endeavours to observe all health and safety rules and regulations, and any other reasonable security requirements that apply at the Customer's premises and that have been communicated to it provided that it shall not be liable under this Agreement if, as a result of such observation, it is in breach of any of its obligations under this Agreement.
9. **Maintenance Service Times**
- 9.1 Services will be carried out during the working times as specified in the Maintenance Schedule.
- 9.2 Grundfos' standard daily fee rates for each individual person are calculated on the basis of an eight-hour day between 8.00am and 5.00pm on Business Days. Grundfos shall be entitled to charge for any Services undertaken outside of these hours at the Time and Materials Rate in effect at the relevant time.
- 9.3 Grundfos shall use reasonable endeavours to attend the Delivery Location, but if Grundfos is prevented by any reason outside his control or under the control of the Customer, from installing the Equipment or carrying out the Services at the time of the visit, it shall not constitute a material breach of this Agreement. If additional visits are required to the Delivery Location which are not accounted for in the Maintenance Schedule, Grundfos reserves the right to charge the Customer at the Time and Materials Rate for all additional time incurred.
10. **Customer's obligations**
- 10.1 The Customer shall:
- (a) ensure that the terms of the Order and the Equipment Specification are complete and accurate;
- (b) co-operate with Grundfos in all matters relating to this Agreement;
- (c) provide Grundfos, its employees, agents, consultants and subcontractors, with access to the Customer's premises, office accommodation and other facilities as reasonably required by Grundfos to provide the Services and/or deliver the Equipment;
- (d) prepare the Customer's premises (or the location where the Services are to be performed) for the supply of the Services and/or the Equipment;
- (e) provide adequate lighting, heating, power and ventilation as per Grundfos' reasonable requirements;
- (f) inform Grundfos' engineer or representative on each visit about any unsatisfactory running or irregular performance of the Equipment or equipment in respect of which the Services are undertaken.
- (g) ensure the Equipment is installed and kept in suitable premises and under suitable conditions, permit only trained and competent personnel to use it and follow any operating instructions as Grundfos may give from time to time;
- (h) provide a site visit request form to Grundfos in respect of any Services to be carried out by Grundfos, its agents, subcontractors, consultants or employees (as the case may be);
- (i) provide to Grundfos, in a timely manner, such In-put Material and other information as Grundfos may require and ensure that it is accurate in all material respects;
- (j) be responsible (at its own cost) for preparing and maintaining the relevant premises for the supply of the Services and/or Equipment, including identifying, monitoring, removing and disposing of any hazardous materials from its premises in accordance with all applicable laws, before and during the supply of the Services and/or Equipment at those premises;
- (k) inform Grundfos of all health and safety rules and regulations and any other reasonable security requirements that apply at the Customer's premises;
- (l) ensure that all In-Put Materials are in good working order and suitable for the purposes for which it is used in relation to the Services;
- (m) keep all Grundfos' materials, equipment, documents and other property (Grundfos Property) at the Customer's premises in safe custody at its own risk, keep all Grundfos Property in good condition until returned to Grundfos and not dispose of or use the Grundfos Property other than in accordance with Grundfos' written instructions and authorisations; and
- (n) obtain and maintain all necessary licences and consents and comply with all relevant legislation in relation to the Services, the installation of the Equipment and the use of In-put Material in all cases before the date on which the Services are to start.
- 10.2 If Grundfos' performance of any of its obligations in respect of the Services is prevented or delayed by any act or omission by the Customer (including its agents, subcontractors, consultants or employees) or failure by the Customer to perform any relevant obligation (Customer Default):
- (a) Grundfos shall without limiting its other rights or remedies have the right to suspend performance of the Services until the Customer remedies the Customer Default, and to rely on the Customer Default to relieve it from the performance of any of its obligations under this Agreement to the extent the Customer Default prevents or delays Grundfos' performance of any of its obligations;
- (b) Grundfos shall not be liable for any costs or losses sustained or incurred by the Customer arising directly or indirectly from Grundfos' failure or delay to perform any of its obligations as set out in this condition 10.2; and
- (c) the Customer shall reimburse Grundfos on written demand for any costs or losses sustained or incurred by Grundfos arising directly or indirectly from the Customer Default.
- 10.3 The Customer shall be liable to pay to Grundfos, on demand, all reasonable costs, charges or losses sustained or incurred by Grundfos (including, without limitation, any direct, indirect or consequential losses, loss of profit and loss of reputation, loss or damage to property and those arising from injury to or death of any person and loss of opportunity to deploy resources elsewhere) arising directly or indirectly from the Customer's fraud, negligence, failure to perform or delay in the performance of any of its obligations under this Agreement, subject to Grundfos confirming such costs, charges and losses to the Customer in writing.

10.4	The Customer shall not, without the prior written consent of Grundfos, at any time from the date of this Agreement to the expiry of 12 months after the last date of supply of the Services, solicit or entice away from Grundfos or employ (or attempt to employ) any person who is, or has been, engaged as an employee of Grundfos in the provision of the Services.	
11.	The CDM Regulations	
11.1	The Customer and Grundfos agree that the Customer is to be treated for the purposes of the CDM Regulations as the Client for the purposes of the CDM Regulations.	
11.2	The Customer agrees to ensure that the Works are carried out in accordance with the CDM Regulations.	
11.3	The Customer shall ensure that the Health and Safety File is maintained correctly and is available for inspection in accordance with the CDM Regulations.	
11.4	The Customer shall indemnify and keep the Owner indemnified against liability for any breach of the Customer's obligations under or in connection with this condition 11.	
12.	Charges and Payment	
12.1	The price for the Equipment shall be the price set out in the Order or, if no price is quoted, the price set out in the published price list of Grundfos (or Grundfos as the case may be) as at the date of delivery. Unless otherwise stated in the Order, the price of the Equipment is exclusive of all costs and charges of packaging, insurance, transport of the Equipment, which shall be paid by the Customer when it pays for the Equipment.	13.2
12.2	In the case of Product Services Service contracts, Installation Works and Engineered to Order products Grundfos reserves the right to request a deposit payment and/or payment milestones. The amount or means of calculating such payment shall be set out in the Quotation.	13.3
12.3	Grundfos reserves the right to require (at its option) a parent company guarantee or a personal guarantee from the directors of the Customer at any time in relation to all outstanding amounts due to Grundfos from the Customer from time to time.	13.4
12.4	The charges for Services shall be set out in the Payment Schedule.	13.5
12.5	Unless stated otherwise all prices are given on a DAP (delivered at place) basis.	
12.6	Grundfos reserves the right to: (a) increase its standard daily fee rates for the Services. Grundfos will give the Customer reasonable notice in writing of any such increase before the proposed date of the increase. If such increase is not acceptable to the Customer, it shall notify Grundfos in writing within 14 days of the date of Grundfos' notice and either of Grundfos or the Customer shall have the right, without limiting its other rights or remedies, to terminate this Agreement by giving 14 days' written notice (or any other reasonable notice period if performance of the Order is due to commence within 14 days) to Grundfos or Customer (as applicable); and (b) increase the price of the Equipment, by giving notice to the Customer at any time before delivery, to reflect any increase in the cost of the Equipment to Grundfos that is due to: (i) any factor beyond the control of Grundfos (including foreign exchange fluctuations, increases in taxes and customs' charges and duties, and increases in labour, materials, fuel and other manufacturing costs); (ii) any request by the Customer to change the delivery date(s), quantities or types of Equipment ordered, or the Equipment specification; or (iii) any delay caused by any instructions of the Customer in respect of the Equipment or failure of the Customer to give Grundfos adequate or accurate information or instructions in respect of the Equipment.	14.
12.7	In respect of Equipment, Grundfos shall invoice the Customer on or at any time after completion of delivery. If delivery of the Equipment is made in instalments, Grundfos may invoice the Customer in instalments. In respect of Services, Grundfos shall invoice the Customer in accordance with the Payment Schedule.	14.1
12.8	The Customer shall pay each invoice submitted by Grundfos: (a) within 30 days of the date of the invoice or in accordance with any other payment terms agreed by Grundfos in writing; and (b) in full and in cleared funds to a bank account nominated in writing by Grundfos, and time for payment shall be of the essence of this Agreement.	14.2
12.9	All amounts payable by the Customer under this Agreement are exclusive of amounts in respect of value added tax chargeable from time to time (VAT). The Customer shall pay any VAT which is chargeable on the supply of the Services and/or Equipment at the same time as payment is due for the supply of the Services and/or Equipment.	15.
12.10	Grundfos may in its sole discretion elect to provide a credit facility to the Customer but is not obliged to do so. Any credit facility offered will be on written terms agreed by Grundfos and the Customer.	15.1
12.11	Without prejudice to any other right or remedy that it may have, if the Customer fails to pay Grundfos on the due date, Grundfos may: (a) charge interest on such sum from the due date for payment at an annual rate equal to the set rate of interest provided under the Late Payment of Commercial Debt (Interest) Act 1998 as varied from time to time accruing on a daily basis and being compounded quarterly until payment is made, whether before or after any judgment and the Customer shall pay the interest immediately on demand; (b) charge compensation for late payment at a set rate depending on the size of the debt in accordance with the Late Payment of Commercial Debt Regulations 2002 (SI 2002 No 1674). The minimum charge applicable is £40.00, the maximum applicable is £100.00; (c) appropriate any payment by the Customer to any outstanding invoice as Grundfos may think fit not withstanding any purported appropriation by the Customer; and (d) suspend the provision of further Services until payment has been made in full.	15.2
12.12	The Customer shall pay all amounts due under this Agreement in full without any set-off, counterclaim, deduction or withholding except as required by law. Grundfos may, without limiting its other rights or remedies, set off any amount owing to it by the Customer against any amount payable by Grundfos to the Customer.	15.3
12.13	All sums payable to Grundfos under this Agreement shall become due immediately on its termination, despite any other provision. This condition 12.10 is without prejudice to any right to claim for interest under the law, or any such right under this Agreement.	15.4
12.14	Grundfos shall have a lien on all of the Customer's property in Grundfos' possession for all sums due at any time by the Customer to Grundfos subject to Grundfos giving not less than one month's written notice to the Customer. Grundfos shall be entitled to use, sell and dispose of any such property as agent for the Customer at the Customer's expense. The proceeds of such sale shall be applied towards the payment of monies due to Grundfos and Grundfos shall be discharged of any liability in relation to such property as a result of any sale.	16.
13.	Warranty and Limitation of Liability	16.1
13.1	<i>THE CUSTOMER'S ATTENTION IS SPECIFICALLY DRAWN TO THIS CONDITION</i> Nothing in these Conditions shall limit or exclude Grundfos' liability for: (a) death or personal injury caused by its negligence, or the negligence of its employees, agents or subcontractors; (b) fraud or fraudulent misrepresentation; (c) breach of the terms implied by section 2 of the Supply of Goods and Services Act 1982 (title and quiet possession);	16.2
	(d) breach of the terms implied by section 12 of the Sale of Goods Act 1979 (title and quiet possession); or (e) defective products under the Consumer Protection Act 1987.	16.3
	Subject to condition 13.1: (a) Grundfos shall under no circumstances whatsoever be liable to the Customer, whether in contract, tort (including negligence), breach of statutory duty, or otherwise, for any loss of profit, turnover, data, business opportunity, anticipated savings, any indirect or consequential loss or any damage to goodwill arising under or in connection with this Agreement; (b) Grundfos' total liability to the Customer where the Customer has provided Grundfos with incorrect weights, dimensions, capacity performance or other information shall in no circumstances exceed the price of the Equipment supplied in accordance with such incorrect information; and (c) Grundfos' total liability to the Customer in respect of all other losses arising under or in connection with this Agreement, whether in contract, tort (including negligence), breach of statutory duty, or otherwise, shall in no circumstances exceed £1million.	17.
	The terms implied by sections 13 to 15 of the Sale of Goods Act 1979 and the terms implied by sections 3 to 5 of the Supply of Goods and Services Act 1982 are, to the fullest extent permitted by law, excluded from this Agreement.	17.1
	This condition 13 shall survive termination of this Agreement.	
	The Customer shall indemnify Grundfos for any costs suffered by Grundfos for claims from any third party which arise by virtue of the Customer having resold the Equipment (unless such claim arises solely from Grundfos' negligence).	
	Confidentiality and Grundfos' property	
	Each party (receiving party) shall keep in strict confidence all technical or commercial know-how, specifications, inventions, processes or initiatives which are of a confidential nature and have been disclosed to the receiving party by the other party (disclosing party), its employees, agents or subcontractors, and any other confidential information concerning the disclosing party's business, its products and services which the receiving party may obtain. The receiving party shall only disclose such confidential information to those of its employees, agents and subcontractors who need to know it for the purpose of discharging the receiving party's obligations under this Agreement, and shall ensure that such employees, agents and subcontractors comply with the obligations set out in this condition as though they were a party to this Agreement. The receiving party may also disclose such of the disclosing party's confidential information as is required to be disclosed by law, any governmental or regulatory authority or by a court of competent jurisdiction. Neither party shall use the other's confidential information for any purpose other than to perform its obligations under this Agreement.	
	Intellectual Property Rights	
	(Subject to condition 15.2) all Intellectual Property Rights in or arising out of or in connection with: (a) the Equipment; (b) the Services; or (c) any manuals or documentation given by Grundfos to the Customer, shall be owned by Grundfos and nothing in this agreement shall transfer or assign any such Intellectual Property Rights to the Customer.	
	The Customer acknowledges that, in respect of any third party Intellectual Property Rights, the Customer's use of any such Intellectual Property Rights is conditional on Grundfos first obtaining a written licence from the relevant licensor on such terms as will entitle Grundfos to license such rights to the Customer.	
	The Customer grants to Grundfos a fully paid up, non-exclusive, royalty free, non-transferable licence to copy and modify any In-put Material for the purpose of providing the Services to the Customer.	
	The Customer shall indemnify Grundfos against all liabilities, costs, expenses, damages and losses (including any direct, indirect or consequential losses, loss of profit, loss of reputation and all interest, penalties and legal costs (on a full indemnity basis) and all other reasonable professional costs and expenses) suffered or incurred by Grundfos for actual or alleged infringement of a third party's Intellectual Property Rights arising out of or in connection with Grundfos' use of the Equipment Specification.	
	Data protection	
	Both parties will comply with all applicable requirements of the Data Protection Legislation. This condition 16 is in addition to, and does not relieve, remove or replace, a party's obligations under the Data Protection Legislation. In this condition 16 Applicable Laws means (for so long as and to the extent that they apply to the Supplier) the law of the European Union, the law of any member state of the European Union and/or Domestic UK Law; and Domestic UK Law means any Data Protection Legislation from time to time in force in the UK including the Data Protection Act 2018 or any successor legislation.	
	Without prejudice to the generality of condition 16.1 each party shall, in relation to any Personal Data processed in connection with the performance by that party of its obligations under the Agreement: (a) ensure that it has in place appropriate technical and organisational measures to protect against unauthorised or unlawful processing of Personal Data and against accidental loss or destruction of, or damage to, Personal Data, appropriate to the harm that might result from the unauthorised or unlawful processing or accidental loss, destruction or damage and the nature of the data to be protected, having regard to the state of technological development and the cost of implementing any measures (those measures may include, where appropriate, pseudonymising and encrypting Personal Data, ensuring confidentiality, integrity, availability and resilience of its systems and services, ensuring that availability of and access to Personal Data can be restored in a timely manner after an incident, and regularly assessing and evaluating the effectiveness of the technical and organisational measures adopted by it); (b) assist the other party, at the other party's cost, in responding to any request from a Data Subject and in ensuring compliance with its obligations under the Data Protection Legislation with respect to security, breach notifications, impact assessments and consultations with supervisory authorities or regulators; (c) notify the Customer without undue delay on becoming aware of a Personal Data breach; (d) at the written direction of the other party, delete or return Personal Data and copies thereof to the other party on termination of the agreement unless required by Applicable Law to store the Personal Data; and (e) maintain complete and accurate records and information to demonstrate its compliance with this condition 16.	
	Neither party consents to the other appointing any third-party processor of Personal Data under the Contract.	
	Termination	
	Without limiting its other rights or remedies, Grundfos or Customer may terminate this Agreement with immediate effect by giving written notice to the other party if: (a) the other party commits a material breach of its obligations under this Agreement and (if such breach is remediable) fails to remedy that breach within 7 days after receipt of written notice to do so;	

- (b) the other party takes any step or action in connection with its entering administration, provisional liquidation or any composition or arrangement with its creditors (other than in relation to a solvent restructuring), being wound up (whether voluntarily or by order of the court, unless for the purpose of a solvent restructuring), having a receiver appointed to any of its assets or ceasing to carry on business [or, if the step or action is taken in another jurisdiction, in connection with any analogous procedure in the relevant jurisdiction];
- (c) the other party suspends, or threatens to suspend, or ceases or threatens to cease to carry on all or a substantial part of its business; or
- (d) the other party's financial position deteriorates to such an extent that in the terminating party's opinion the other party's capability to adequately fulfil its obligations under the Contract has been placed in jeopardy.
- 17.2 Without limiting its other rights or remedies, Grundfos may terminate this Agreement with immediate effect by giving written notice to the Customer if:
- (a) there is a change of control of the Customer (as defined in section 574 of the Capital Allowances Act 2001);
- (b) the Customer is unable or unwilling to procure any guarantee required by Grundfos in accordance with condition 12.3; or
- (c) the Customer's financial position deteriorates to such an extent that in Grundfos' opinion the Customer's capability to adequately fulfil its obligations under the Contract has been placed in jeopardy or Customer fails to pay any amount due under this Agreement on the due date for payment.
- 17.3 Without limiting its other rights or remedies, Grundfos may suspend the supply of Services or all further deliveries of Equipment under this Agreement or any other agreement between the Customer and Grundfos if the Customer becomes subject to an Event of Default, or Grundfos reasonably believes that the Customer is about to become subject to any of them.
- 17.4 On termination of this Agreement for any reason:
- (a) the Customer shall immediately pay to Grundfos all of Grundfos' outstanding unpaid invoices and interest and, in respect of Services supplied but for which no invoice has yet been submitted, Grundfos shall submit an invoice, which shall be payable by the Customer immediately on receipt;
- (b) the Customer shall return all of Grundfos' materials and any deliverables which have not been fully paid for and which have not been installed as part of a bigger system. If the Customer fails to do so, then Grundfos may enter the Customer's premises and take possession of them. Until they have been returned, the Customer shall be solely responsible for their safe keeping and will not use them for any purpose not connected with this Agreement;
- (c) the accrued rights and remedies of the parties as at termination shall not be affected, including the right to claim damages in respect of any breach of this Agreement which existed at or before the date of termination or expiry;
- (d) conditions which expressly or by implication have effect after termination shall continue in full force and effect; and
- (e) Grundfos shall have a lien over all of the Customer's property in Grundfos' possession in respect of all sums due at any time from the Customer to Grundfos. Provided that Grundfos gives at least 14 days' prior written notice, Grundfos shall be entitled to use, sell and dispose of such property as agent for and at the expense of the Customer and apply the proceeds towards the payment of monies due and outstanding from the Customer to Grundfos. Thereafter, Grundfos shall be discharged of any liability in respect of the Customer's property.
- 17.5 On termination of this Agreement (however arising), any of these Conditions that expressly or by implication is intended to have effect after termination (or expiry) shall survive and continue in full force and effect.
18. **Force majeure**
Grundfos shall have no liability to the Customer under this Agreement if it is prevented from, or delayed in performing, its obligations under this Agreement or from carrying on its business by any Force Majeure Event.
19. **Variation**
Except as provided in these Conditions, no variation of this Agreement or these Conditions or of any of the documents referred to in them shall be valid unless it is in writing and signed by or on behalf of each of the authorised representatives of the parties.
20. **Waiver**
20.1 A waiver of any right under this Agreement is only effective if it is in writing and it applies only to the circumstances for which it is given. No failure or delay by a party in exercising any right or remedy under this Agreement or by law shall constitute a waiver of that (or any other) right or remedy, nor preclude or restrict its further exercise. No single or partial exercise of such right or remedy shall preclude or restrict the further exercise of that (or any other) right or remedy.
- 20.2 Unless specifically provided otherwise, rights arising under this Agreement are cumulative and do not exclude rights provided by law.
21. **Severance**
21.1 If any provision of this Agreement (or part of any provision) is found by any court or other authority of competent jurisdiction to be invalid, illegal or unenforceable, that provision or part-provision shall, to the extent required, be deemed not to form part of this Agreement, and the validity and enforceability of the other provisions of this Agreement shall not be affected.
- 21.2 If a provision of this Agreement (or part of any provision) is found illegal, invalid or unenforceable, the provision shall apply with the minimum modification necessary to make it legal, valid and enforceable.
22. **Entire agreement**
22.1 This Agreement constitutes the whole agreement between the parties and supersedes all previous agreements between the parties relating to its subject matter.
- 22.2 Each party acknowledges that, in entering into this Agreement, it has not relied on, and shall have no right or remedy in respect of, any statement, representation, assurance or warranty (whether made negligently or innocently) (other than for breach of contract), as expressly provided in this Agreement.
- 22.3 Nothing in this condition shall limit or exclude any liability for fraud.
23. **Assignment**
23.1 The Customer shall not, without the prior written consent of Grundfos, assign, transfer, charge, mortgage, subcontract or deal in any other manner with all or any of its rights or obligations under this Agreement.
- 23.2 Grundfos may at any time assign, transfer, charge, mortgage, subcontract or deal in any other manner with all or any of its rights under this Agreement and may subcontract or delegate in any manner any or all of its obligations under this Agreement to any third party or agent.
- 23.3 Each party that has rights under this Agreement is acting on its own behalf and not for the benefit of another person.
24. **No partnership or agency**
Nothing in this Agreement is intended to, or shall be deemed to, constitute a partnership or joint venture of any kind between any of the parties, nor constitute any party the agent of another party for any purpose. No party shall have authority to act as agent for, or to bind, the other party in any way.
25. **Rights of third parties**
A person who is not a party to this Agreement shall not have any rights under or in connection with it.
26. **Notices**
26.1 Any notice required to be given under this Agreement shall be in writing and shall be delivered personally, or sent by pre-paid first-class post, recorded delivery or by commercial courier to the registered office or the address stated in the Order (or as otherwise notified to the other party in writing).
- 26.2 Any notice shall be deemed to have been duly received if delivered personally, when left at the correct address or, if sent by pre-paid first-class post or recorded delivery, at 9.00am on the second Business Day after posting, or if delivered by commercial courier, on the date and at the time that the courier's delivery receipt is signed.
- 26.3 This condition 26 shall not apply to the service of any proceedings or other documents in any legal action.
- 26.4 A notice required to be given under this Agreement shall also be validly served if sent by e-mail.
27. **Governing law and jurisdiction**
27.1 This Agreement, and any dispute or claim arising out of or in connection with it or its subject matter or formation (including non-contractual disputes or claims), shall be governed by, and construed in accordance with, the law of England and Wales.
- 27.2 The parties irrevocably agree that the courts of England and Wales shall have exclusive jurisdiction to settle any dispute or claim that arises out of, or in connection with, this Agreement or its subject matter or formation (including non-contractual disputes or claims).

GRUNDFOS PUMPS LTD.
Grovebury Road
Leighton Buzzard
Beds LU7 4TL

Tel: 01525 850000
Email: grundfos-uk@sales.grundfos.com

www.grundfos.co.uk

