

Grundfos Pump Repair Kits

Price List February 2020

Category 4A



PRODUCTS INCLUDED:

UPE/MAGNA
SOLOLIFT+/SOLOLIFT2
UNILIFT
MQ/JP/SCALA2
CM/CH
CR
TP/NB/NK
SP
MG/MGE



PLEASE NOTE THE FOLLOWING FROM OUR TERMS AND CONDITIONS OF SALE:

A copy of our full terms and conditions are available at the back of this price list

All prices are delivered at place (DAP) and subject to VAT at the standard rate.

MINIMUM ORDER VALUE

Our minimum order value is **£55.00 NET**. Orders between the minimum order value and the low order threshold of **£335.00 NET** for pumps or **£130.00 NET** for Category 4, S1,S2,S3,S4 items will be subject to a **£37.00 NET** handling fee.

EXPRESS DELIVERY OPTIONS;

INTERSPEED (PER ITEM) (above **150 Kgs** – subject to transport availability and additional cost)

- CR(I)(E), CRN(E) Vertical Multistage
 - Non-stock SP/SPA models (with or without drop cable cut in 5 metre increments. Please note; resin cable joint will take 24 hours to set)
 - Order must be received electronically by **10.45am** – despatch same day, **delivery by Express Carrier Service** – UK (*note restrictions apply)
- £75.00 NET (PER ITEM)**

BOXSPEED (PER ITEM) – from UK/European DC (above **100 Kgs** – subject to transport availability and additional cost)

- ALPHA, UPS, UPN, UPS3/UPM Circulators
- Magna (D) Glandless Circulators
- UP/UPS/Magna Replacement Heads/Terminal boxes
- TPE(D), NB(E) Glanded
- CM, CME Horizontal Multistage, CMB(E), Boosters, Scala
- JP, MQ and Tanks/Vessels (up to 500 Litre)
- AP, KP, CC, SL1, SLV, Unilift, Sololift
- SQ, SQE, SB(A), SP2A, 3A & 5A >1.5kW (**Excluding pumps with cable fitted as well as SP longer than 2.4 metres**)
- Motors, Flanges & Unions, Pump Components, Chamber Stacks
- Order must be received electronically before **13:30pm** – despatch same day, **delivery by Express Carrier Service** – UK (*note restrictions apply)

FIRST ITEM - £55.00 NET & ADDITIONAL ITEMS £20.00 EACH (PER ORDER)

SPARESPEED (PER ITEM)

- Only applies to spares kits, (**not chamber stacks, components, pump heads or terminal boxes**)
- Order must be received electronically before **13:30pm** – despatch same day, **delivery by Express Carrier Service** – UK (*note restrictions apply)

FIRST ITEM - £45.00 NET & ADDITIONAL ITEMS £20.00 EACH (PER ORDER)

* Express Carrier Service ONLY guaranteed if placed on time via Extranet/EDI. Deliveries to the Highlands, certain mainland post codes and offshore UK may take an extra day. All services are dependent on component and product availability. Grundfos can guarantee despatch or availability for collection same day but cannot guarantee delivery. Grundfos cannot accept any cancellations or amendments once the goods have been despatched. Cancellations are subject to the Product Returns Fee below.

SPARES STANDARD DELIVERY CHARGE

- A **£20.00 NET** handling fee will be applied, per order, to all orders for spares, pump components, spares kits.
- This charge does NOT apply if **SPARESPEED**, express service or our online ordering system (EDI), and/or Extranet are used for order placement.

PRODUCT RETURNS FEE

- On receipt of written agreement from Grundfos, items can be returned and will be subject to a **minimum 35% restocking fee**. Goods must be returned in their original packaging and within **6 months of date of despatch**. All returns will be subject to inspection, to ascertain age, condition and product type and can incur an increased restocking charge. Please contact grundfos-uk@sales.grundfos.com with the original purchase order, to arrange collection. Do not send items to Grundfos as they will be refused delivery, collection will be arranged.
- Items or multiple items from the same Purchase Order must exceed the total Net value of £150

Exclusions to Product Returns apply;

- **All Service kits, cable including attached to pump, assembled/3rd party/engineered to order product, and obsolete/phased out product cannot be returned.**

STORAGE CHARGE

- There will be a **2%** storage charge of the item invoice value, payable per month, commencing one month from the date the goods were available for delivery from Grundfos.

WARRANTY PERIOD

- Grundfos pumps are warranted for 24 months from installation or 30 months from manufacture; whichever is the sooner.
- There is a five-year warranty that covers manufacturing or material defects on domestic heating circulators: UPS3 15-50/65, UPS2 15-50/60, ALPHA models, Amazon & Amazon Universal shower pumps. From 1st March 2017 SCALA2 booster pumps when used in domestic applications.

SERVICE AND COMMISSIONING

Grundfos offers a wide range of service, repair and commissioning options. Please contact Service on 01525 850000 or email servicesupportuk@grundfos.com

ORDER TRACKING AND PROOF OF DELIVERY

- Order status and Proof of Delivery can be obtained via Grundfos Extranet or MyGrundfos online portals.
- For extranet access contact grundfos-uk@sales.grundfos.com and Self-registration for MyGrundfos can be found here; <https://uk.grundfos.com/mygrundfos>

INDEX

	Page
UPC / UMC / UPS Series 100 / UPS Series 200 / ALPHA	4
UPS Series 200	5
UPE / MAGNA	6
MAGNA1 / MAGNA3	7
SOLOLIFT+	8
SOLOLIFT2	9
APG, UNILIFT CC / KP / AP	10
MQ, JP, SCALA2	11
CH, CHI, CHIE	12
CM, CME, CM-SP, CMBE, CH and JP BOOSTER	13
CP, CPK	14
CR, CRI, CRN 1, 3, & 5 CR, CRN 2 & 4	15
CR, CRI, CRN 10, 15 & 20 CR, CRN 8 & 16	16
CR, CRN 30 & 60	17
CR, CRN 32, 45, 64, 90,95, 120, 125, 150 & 155	18
CRT	24
CRK, SPK	26
MTH, MTR	27
CLM / CLP / CDM / CDP / NM / NP / LM / LP / LMD / LPD	29
UMT / UPT / UMTD / UPTD	30
TP	31
NB / NK	34
SP	39
SUBMERSIBLE MOTOR CABLES / SQ, SQE	43
BOOSTER SETS	44
MG/MGE motors	45

UMC, UPC, UPS Series 100, ALPHA**UMC/UPC**

Pump heads

UMC/UPC pump heads 1ph and 3ph are obsolete
Please contact grundfos-uk@sales.grundfos.com for alternative pump

		240V 1ph 50Hz			415V 3ph 50Hz	
		Capacitor	£	Product Code	£	Product Code
Terminal boxes	UPC 40-60	6 µF	402	96405853	392	96404870
	UPC 40-120	10 µF	402	96405855	392	96404870
	UMC 50-60	14 µF	402	96405857	392	96404870
	UPC 50-120	20 µF	402	96405859	392	96404870
	UMC 65-60	20 µF	402	96405859	392	96404870
	UPC 65-120	25 µF	402	96405860	392	96404870
	UMC 80-60				392	96404870
	UPC 80-120				392	96404870
	UMC 100-60				392	96404870

UPS - Series 100

		£	Product Code
Pump heads	UPS 40-50	UPS 40-50 and UPS 40-80 single phase pump heads are obsolete Please contact grundfos-uk@sales.grundfos.com for alternative pump	
	UPS 40-80		
Pump heads*	UP 40-50 F	1,119	52992095
Terminal box*	UP 40-50 F	16	98730796

* Product obsolete. Once stock is depleted, please contact grundfos-uk@sales.grundfos.com

UPS - Series 200

		£	Product Code
Flap valve with guide pin for twin head pumps	UPS 32	23	96407253
	UPS 40	31	96407254
	UPS 50	86	96407255
	UPS 65	54	96407256
	UPS 80	38	96407257
	UPS 100	116	96407258

ACCESSORIES

			£	Product Code
Tee key	4mm	UPS 15-50 etc	30	00SV0181
	5mm	UPS 32-80; 40-50; 40-80	30	00SV0124
	6mm	UPS 40-60; 40-120	25	00SV0050
	8mm	UPS 50; UPS 65; UPS 80; UPS 100	48	00SV0051
COMFORT UP(S) PM plug			19	98685259
Alpha Plug (straight)	ALPHA Pro, ALPHA+		26	595562
	ALPHA2 (L), ALPHA3, MAGNA1, MAGNA3		20	98284561
Body O'Ring Kit		all large UPS	32	96406940
Gasket D44/D32x2		UP 15- UP 25 (pack 50)	23	99200010
Red Spray Paint			33	96485340
Flow Switch		UPA90	56	595406

Circulator Washers (520046)	Pack of 50	23	99200010
Air vent screw 1/4" BSP	Pack of 5	60	96548464
UPS3 Plug	UPS3	31	99439948
UPS2 Plug	UPS2	20	98284561

**ALPHA plug**

UPS / UPSD - Series 200

UPS Series 200 replacement pump heads

	240V 1ph 50Hz		415V 3ph 50Hz	
	£	Product Code	£	Product Code
UPS 32-30/4	799	96405977	799	96405979
UPS 32-60/2	799	96405980	799	96405984
UPS 32-120/2	799	96405985	799	96405987
UPS 40-30/4	799	96405988	799	96405990
UPS 40-60/2	799	96405994	799	96405996
UPS 40-60/4	931	96405991	931	96405993
UPS 40-120/2	799	96405997	799	96405999
UPS 40-180/2	931	96406000	931	96406001
UPS 40-185/2	931	96432239	931	96432238
UPS 50-30/4	799	96406002	799	96406004
UPS 50-60/2	799	96406009	799	96406013
UPS 50-60/4	931	96406005	931	96406008
UPS 50-120/2	931	96406015	931	96406017
UPS 50-180/2	931	96406018	931	96406019
UPS 65-30/4	799	96406020	799	96406022
UPS 65-60/2	799	96406026	799	96406028
UPS 65-60/4	931	96406023	931	96406025
UPS 65-120/2	931	96406029	931	96406031
UPS 65-180/2			931	96406032
UPS 80-30/4			931	96406034
UPS 80-60/4			931	96406036
UPS 80-120/2			931	96406038
UPS 100-30/4			931	96406040

* UPS circulator pumps with metal ID plate obsolete - no spares

* Pump with FO6 on name plate obsolete - no spares

UPS Series 200 replacement terminal boxes

	240V 1ph 50Hz			415V 3ph 50Hz	
	Capacitor	£	Product Code	£	Product Code
UPS 32-30/4	4 µF	402	96405852	392	96404870
UPS 32-60/2	6 µF	402	96405853	392	96404870
UPS 32-120/2	10 µF	402	96405855	392	96404870
UPS 40-30/4	6 µF	402	96405853	392	96404870
UPS 40-60/2	8 µF	402	96405854	392	96404870
UPS 40-60/4	10 µF	402	96405855	392	96404870
UPS 40-120/2	12 µF	402	96405856	392	96404870
UPS 40-180/2	25 µF	402	96405860	392	96404870
UPS 40-185/2	25 µF	402	96405860	392	96404870
UPS 50-30/4	6 µF	402	96405853	392	96404870
UPS 50-60/2	10 µF	402	96405855	392	96404870
UPS 50-60/4	20 µF	402	96405859	392	96404870
UPS 50-120/2	25 µF	402	96405860	392	96404870
UPS 50-180/2	30 µF	402	96405861	392	96404870
UPS 65-30/4	8 µF	402	96405854	392	96404870
UPS 65-60/2	16 µF	402	96405858	392	96404870
UPS 65-60/4	20 µF	402	96405859	392	96404870
UPS 65-120/2	30 µF	402	96405861	392	96404870



UPSD 50-120 F

UPE(D), MAGNA UPE(D)

UPE UPED Replacement 3 phase heads and terminal boxes

Pump head
Terminal box

Pump heads and terminal boxes are obsolete
Please contact grundfos-uk@sales.grundfos.com for alternative pump

UPE(D) - SINGLE PHASE TERMINAL BOXES (model E)*

	£	Product Code
UPE 32-120 (F)(N)	1,528	96513647
UPE(D) 40-100 (F)	937	97752743
UPE(D) 40-120 (F)(N)	1,528	96513647
UPE(D) 50-60 (F)(N)	1,528	96513647
UPE 50-100 (F)	937	97752743
UPE(D) 50-120 (F)(N)	2,485	96500020
UPE(D) 65-60 (F)(N)	1,528	96513647
UPE(D) 65-120(F)(N)	2,485	96500020
UPE(D) 80-120 FZ	POA	97529279

MAGNA 25/32/40/50-40/60/80/100

937 97752743

* Product obsolete. Once stock is depleted, please contact grundfos-uk@sales.grundfos.com

UPE(D) - SINGLE PHASE PUMP HEADS (model E)*

	£	Product Code
UPE 32-120 (F)(FN)	POA	96513648
UPE 40-100(F)(F(D))	POA	96281051
UPE 40-120(F)(FN)(F(D))	POA	96513649
UPE 50-60(F)(FN)(F(D))	POA	96513660
UPE 50-100(F)	POA	96281052
UPE 50-120(F)(F(D))(FN)	1,196	96499918
UPE 65-60(F)(FN)(F(D))	POA	96513661
UPE 65-120(F)(FN)(D)	POA	96499919

UPE25-60

POA 96281047

UPE25-100

POA 96281049

* Product obsolete. Once stock is depleted, please contact grundfos-uk@sales.grundfos.com

UPE (D)

	£	Product Code
Geni Module	185	605945
LON Module	OBSOLETE	98179044



UPE GENI module

MAGNA (D)

	£	Product Code
Geni Module *	OBSOLETE	96236335

Magna 4/6/8/10 m

* Product obsolete. Once stock is depleted, please contact grundfos-uk@sales.grundfos.com



Magna add-on module



Magna terminal box

Please advise pump PN and contact Grundfos direct to ensure correct generation of spare quoted
Above items are under our phase out program - please call to check stock once stock sold parts are obsolete

MAGNA1, MAGNA1 D, MAGNA3, MAGNA3 D

MAGNA1, MAGNA1 D

	£	Product Code
ALPHA plug (Straight)	20	98284561
Kit, O-ring D68x4.35	63	98357755
Control box cover	104	98988010
Insulation shell DN25/D32 180	44	98615808
Insulation shell DN32-100 F 220	57	98615809
Insulation shell DN40-60 F 220	58	98615810

HEADS AND TERMINAL BOXES

PLEASE CONTACT GRUNDFOS WITH PUMPS QUOTING PN NUMBER FROM YOUR NAMEPLATE

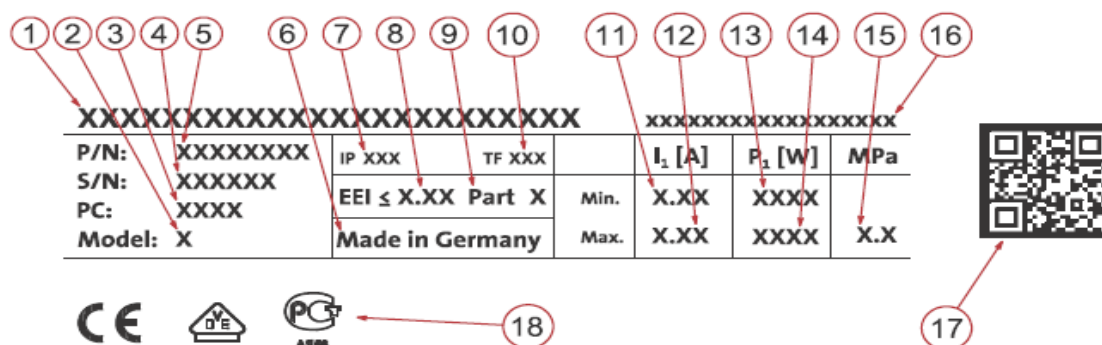
MAGNA3, MAGNA3 D

	£	Product Code
ALPHA plug (Straight)	20	98284561
Kit, Sensor DPS	94	99313067
Kit, sensor cable	459	99313072
Control box cover front end	116	98148727
Connector plugs for Magna 1 & 3	101	98357861

HEADS AND TERMINAL BOXES

PLEASE CONTACT GRUNDFOS WITH PUMPS QUOTING PN NUMBER FROM YOUR NAMEPLATE

The pump nameplate provides the following information:



Part 164

SOLOLIFT+**SOLOLIFT+ WC, WC-1 & WC-3**

		£	Product Code
Hoses		on request	96553016
Microswitch		136	96575698
Top cover	Sololift+ WC-1; WC-3	226	96553041
	Sololift+ WC	218	96553040
Wear parts		85	96553045
Spare box		OBSOLETE	96553054

SOLOLIFT+ CWC-3

		£	Product Code
Hoses		221	96553017
Microswitch		136	96575699
Top cover		212	96553042
Wear parts		98	96553046
Spare box		OBSOLETE	96553056

SOLOLIFT+ C-3

		£	Product Code
Hoses		221	96553017
Microswitch		136	96575710
Top cover		212	96553042
Wear parts		98	96553046
Spare box		OBSOLETE	96553057

SOLOLIFT+ D-3

		£	Product Code
Hoses		433	96553018
Microswitch		136	96575711
Top cover		OBSOLETE	96553043
Wear parts		OBSOLETE	96553047

**SOLOLIFT+ range**

SOLOLIFT2

SOLOLIFT2 WC-1 & WC-3

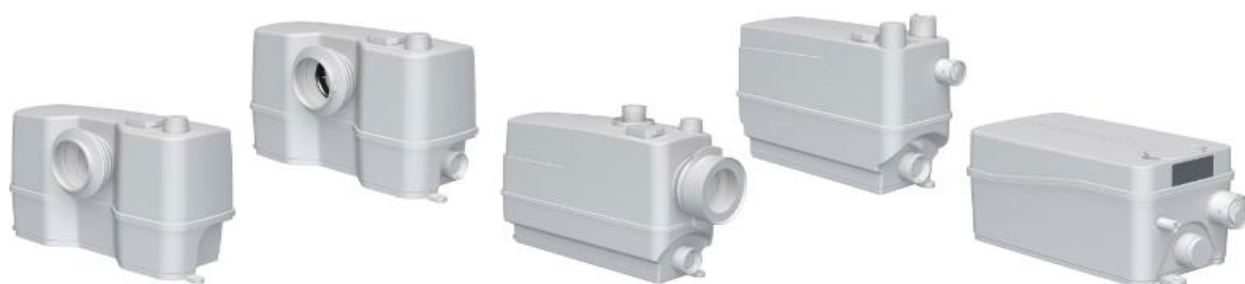
	£	Product Code	
Discharge connector	39	98103367	
Pressure switch	92	97775344	
Capacitor	33	97775374	
Carbon Filter, bulk	pack 5	16	97775370
Gasket for toilet connection (pan connector)	64	97775368	
Non-return valve for outlet	22	97775371	
Impeller	34	97775350	
Inlet adapter	36	97775378	
Blanking plug	(item C in instruction book)	33	97775304
WC-1 accessory kit	(supplied with unit)	124	98163942
WC-3 accessory kit	(supplied with unit)	93	97940294

SOLOLIFT2 CWC-3

	£	Product Code	
Pressure switch	92	97775344	
Capacitor	33	97775374	
Carbon Filter, bulk	pack 5	16	97775370
Gasket for toilet connection (pan connector)	65	97775369	
Non-return valve for outlet	22	97775371	
Impeller	34	97775350	
Inlet adapter	36	97775378	
Blanking cover	(item C in instruction book)	33	97775304
Rubber parts	(item B in instruction book)	52	97775364
CWC -3 accessory kit	(supplied with unit)	102	97767074

SOLOLIFT2 C-3 & D-2

		£	Product Code
Capacitor		23	97775375
Carbon Filter, bulk	pack 5	16	97775370
C-3 discharge Connector		21	98103364
C-3 impeller		32	97775352
D-2 impeller		29	97775354
C-3 Float switch kit		86	97775346
Non Return Valve for outlet		22	97775371
D-2 pressure switch kit		85	97775347
C-3 assessor kit	(supplied with unit)	116	98163965
D-2 accessory kit	(supplied with unit)	95	98163966



SOLOLIFT2 range

PUMP REPAIR KITS

UNILIFT CC

		£	Product Code
Impeller kit	Unilift CC5	47	96578967
	Unilift CC7	47	96578968
	Unilift CC9	48	96578969
Float switch	all models	78	96578970
Motor kit	Unilift CC5	149	96578973
	Unilift CC7	157	96578974
	Unilift CC9	179	96578975
O-ring kit	all models	18	98561387
Strainer	all models	60	96578990
Rubber flap valve	all models	22	97825322
Rubber flap valve	(pack of 10) all models	57	96578978

UNILIFT KP

		£	Product Code
Cable socket spanner		183	10757
Impeller kit	Unilift KP150	49	15778
	Unilift KP250	51	15779
Motor cable with float switch 10m	Unilift KP150, KP250 & KP350	155	16723
Motor cable with float switch 5m	Unilift KP150, KP250 & KP350	111	16724
Motor Cable without float switch 5m	Unilift KP150, KP250 & KP350	115	16725
Motor Cable without float switch 10m	Unilift KP150, KP250 & KP350	111	16726
Motor Cable with vertical float switch 5m	Unilift KP150 & KP250	222	16739
Non-return valve (single)		22	97825322
Non-return valve (pack of 10)		57	96578978

UNILIFT AP

			£	Product Code
Shaft seal	Unilift AP12, 35 & 50	NBR	205	96427804
	Unilift AP12, 35 & 50	FKM (Viton)	318	96426650
Float Switch 0.7m	Unilift AP12		105	96548101

UNILIFT AP B

			£	Product Code
Shaft seal	Unilift AP35B & 50B	NBR (standard)	181	96429307
	Unilift AP35B & 50B	FKM (Viton)	231	96429308
Cable entry repair kit	Automatic		159	96429309
	Manual		196	96429310

APG

		MODEL A		MODEL B	
50 Hz		£	Product Code	£	Product Code
Wear parts kit	APG 50.09 / APG 50.11	305	96003308	519	96007169
	APG 50.09.Ex / APG 50.11.Ex	715	96003696	1,336	96007178
	APG 50.17 / APG 50.18 / APG 50.19	479	96003309	847	96007170
	APG 50.19.3 Ex AND APG 50.31.3 Ex	644	96003310	1,009	96007171
	APG 50.31	649	96003311	651	96007172
	APG 50.48.3.Ex / APG 50.65.3.Ex / APG50.92.3.Ex			1,118	96005498
	APG 50.48.3.Ex / APG 50.65.3.Ex / APG50.92.3.Ex *			1,034	96005499

* Pump with moisture switch



Unilift AP float switch



Unilift CC discharge and non-return valve

MQ, JP, SCALA2

MQ

		£	Product Code
Shaft seal kit		117	96450696
O-ring kit		127	96526628
Hydraulic kit	50Hz models only	304	96525909
Fittings kit with non-return valve	G 1"	85	96577720
Fittings kit with non-return valve	NPT 1"	56	96634763
Pressure switch	MQ 3-35	99	96526653
Pressure switch	MQ 3-45	123	98652420
End-cover		155	96488398
Clamp		136	96450697
Flow sensor		102	96450698
Terminal box connection		95	96488399
Tank		196	98893507
Internal non-return valve		65	96526663
Electronic parts kit	230V 50Hz	330	96525934
Capacitor	12.5 µF	30	96590742
Drain plug		51	96457923

JP4

		£	Product Code
Bulk, pipe plug		23	99521030
Kit, hydraulic parts		125	98715217
Kit, lifting handle		27	99521000
Kit, motor cover		37	99521025
Kit, O-rings		15	99577668
Kit, pump housing		164	99521027
Kit, shaft seal		39	99520998
Spare, capacitor		16	99521052
Spare, motor fan cover		16	99577666

JP5

		£	Product Code
Shaft seal kit	model D	38	96768182
Shaft seal & gasket kit	model C	82	985742
Gasket kit	model B, D, E	40	96768180
Hydraulic parts/ejector	model B, D, E	141	96768184

JP6

		£	Product Code
Shaft seal kit	model D	38	96768182
Shaft seal & gasket kit	model C	82	985743
Gasket kit	model B, D, E	40	96768180
Hydraulic parts/ejector	model B, D, E	140	96768185

SCALA2

		£	Product Code
Shaft seal		60	99016024
O-rings		45	99016019
Drain plug, bulk	(10 pc)	58	99016065
O-ring for drain plug, bulk	(10 pc)	16	99016066
Drain plug and non-return valves		28	99016030
Chamber stack		80	99016032
Connection module		69	99016047
Cover for hydraulic		40	99016053
Cover complete		158	99016058
Fitting R1 and union, composite		26	99016013
Fitting NPT1 and union, composite		26	99016015
Pressure tank		100	99016027

CH, CHI, JP**CH(N) 2 & 4**

			£	Product Code
Shaft seal kit		CVBE/V	81	985164
		AQQE/V	163	96586305
		RUUE/V	132	985737
		AUUE/V	135	985848
Wear parts kit	CH 2	2-5 stages	88	435002
		6 stages	180	435039
	CH 4	2-4 stages	80	445004
		5-6 stages	190	445017

CH 8 & 12 - Model A & B

			£	Product Code
Shaft seal kit		CVBE/V	97	004N5012
		CVBE/V with neck rings	127	004N5013
		AQQE/V	160	96586306
		RUUE/V	142	96416348
Wear parts kit		CH 8-20/25/30	281	96604263
		CH 8-40/50/60	510	96604265
		CH 12-10/20/25/30	230	96604268
		CH 12-40/50/60	469	96604270

CHI(E) 2 & 4

			£	Product Code
Wear parts and shaft seal kit		BUBE / EPDM	257	004H5009
		BUBV / FKM	334	004H5010
		BQQE / EPDM	263	004H5007
		BQQV / FKM	224	004H5008

CHI(E) 8, 10 & 12

			£	Product Code
Wear parts and shaft seal kit		BQQE	316	004F5012
		BQQV	250	004F5013

CHI 15 & 20

			£	Product Code
Shaft seal kit		BQQE	204	96649924
		BQQV	268	96649925
Wear parts and shaft seal kit		BQQE	276	96293521
		BQQV	POA	96293537

**CH****CHI**

CM / CME**CM / CME - A version (cast iron and 304 stainless steel wet components)**

			£	Product Code
Gasket & seal kit	CM 1, 3 & 5	AVBE/V	103	96932350
	CM 1, 3 & 5	AQQE/V	139	96932392
Gasket & seal kit	CM 10, 15 & 25	AVBE/V	124	96932393
	CM 10, 15 & 25	AQQE/V	160	96932394

CM / CME - I / G versions (304/316 stainless steel wet components)

			£	Product Code
Gasket & seal kit	CM 1, 3 & 5	AVBE/V	110	96932438
	CM 1, 3 & 5	AQQE/V	146	96932440
	CM 1, 3 & 5	AQQK	54	96932441
Gasket & seal kit	CM 10, 15 & 25	AVBE/V	119	96932443
	CM 10, 15 & 25	AQQE/V	162	96932445
	CM 10, 15 & 25	AQQK	97	96932446

CM / CME - all models

			£	Product Code
Drain/ fill plug kit		EPDM & FKM	80	96932395
		FFKM	219	96932396
Neck ring		CM 1, 3 & 5	83	96932397
		CM 1, 3 & 5 (low temperature)	176	96932447
		CM 10, 15 & 25	69	96932398
		CM 10, 15 & 25 (low temperature)	221	96932448
Motor bearing		MG(E) 71/80	101	96932399
		MG(E) 90	113	96932400
		MG(E) 100	120	96932412
		MG(E) 112	125	96932413
		MG(E) 132	146	96932414
			£	Product Code
Air separator chamber		CM-SP all models	58	98520101
Empty chamber 27mm		CM-SP all models	32	98520102
Empty chamber 18mm		CM-SP all models	30	98520103
Spacing pipe 13mm		CM-SP all models	28	98520104
Spare sleeve kit		CM-SP 1/3/5-3/4	180	98470942
Spare sleeve kit		CM-SP 1/3/5-5/6	225	98470943
Spare sleeve kit		CM-SP 5-7	256	98470949
Valve kit		CM-SP 4 meters	108	98519018
Valve kit		CM-SP 8 meters	107	98519013

CME Booster (CMBE)

		£	Product Code
Manometer	0-16 bar	93	98906914
Non return valve	1"	80	98906916
Non return valve	1" 1/2	94	98906917
Pressure tank	2 liter GT-H tank with Rp thread	144	98906908
Sensor kit	Sensor MBS 1900 0-10 bar	142	98906904

CH/JP BOOSTER SET

	£	Product Code
Kit, Manometer CMB PS/PT + JPB PT	56	98906913
Kit, 5 way fitting and Gasket	95	98777519
Spacer	41	96587201
Vibration damper	13	96588682
Rivet nut	OBSOLETE	00ID6262
Gasket PK4	46	96603455
Washer	15	00ID2292
Kit, Run Capacitor 20µF IPP	93	96898084
Flexible hose 730mm L) CH/24L	OBSOLETE	00ID3269
Spare, Arm. rubber hose for 50L Tank	86	98986867
Spare, Flexible pipe 20L CH Booster	OBSOLETE	98986791

CP			
CP 2			
		£	Product Code
Shaft seal and gasket kit	all models	447	985140
CP 3			
		£	Product Code
Shaft seal and gasket kit	all models	238	96549650
CP 3 (COLD WATER)			
		£	Product Code
Wear parts kit	1-6 stages	OBSOLETE	315413
	8-12 stages	OBSOLETE	315414
All other parts obsolete			
CP 8			
		£	Product Code
Shaft seal and gasket kit	all models	314	96549654
CP 8K (HOT WATER)			
		£	Product Code
Wear parts kit	1-4 stages	OBSOLETE	325252
	5-10 stages	OBSOLETE	325253
	12-20 stages	OBSOLETE	325254



CP pump

CR / CRI / CRN**CR / CRI / CRN 1, 3 & 5**

			£	Product Code
Shaft seal kit	HQQV	12 mm	294	96455087
	HQQE	12 mm	286	96455086
	HUUUV	12 mm	292	96455085
	HUUE	12 mm	285	96455084
	HUBV	12 mm	197	96455083
	HUBE	12 mm	262	96455082
	HQBV	12 mm	197	96455089
	HQBE	12 mm	190	96455088
Gasket kit	FKM (Viton)		141	96455091
	EPDM		85	96455090
Coupling guard	MG 71-80		62	96505130
	MG 90-132		63	96505131
Plug	EPDM / FKM (Viton)		132	96505133

includes air vent, pipe and drain plugs

			£	Product Code
Wear parts kit SiC	CR / CRI / CRN 1 & 3	up to 9 stages	299	96455095
	CR / CRI / CRN 1 & 3	10-19 stages	347	96455092
	CR / CRI / CRN 1 & 3	21-27 stages	483	96455093
	CR / CRI / CRN 1 & 3	30-36 stages	605	96455094
Wear parts kit SiC	CR / CRI / CRN 5	up to 7 stages	283	96455096
	CR / CRI / CRN 5	8-12 stages	342	96455097
	CR / CRI / CRN 5	13-16 stages	467	96455098
	CR / CRI / CRN 5	18-22 stages	574	96455099
	CR / CRI / CRN 5	24-26 stages	518	96455101
	CR / CRI / CRN 5	29-36 stages	723	96455100

all wear parts kit with silicon carbide bearings

CR / CRN 2

	£	Product Code	£	Product Code
	CR 2		CRN 2	
Shaft seal and gasket kit	AUUE/V	235 405009	AUUE/V	223 985205
	BUBE	149 405096	BUBE	149 405096
	BUBV	147 405097	BUBV	147 405097
Wear parts kit	Up to 9 stages	304 405098	Up to 9 stages	280 405130
	10-18 stages	378 405099	11-15 stages	376 405131
	22-26 stages	446 405100	18 stages	429 405158
			22-26 stages	550 405132

all wear parts kits with ceramic bearings

CR / CRN 4

	£	Product Code	£	Product Code
	CR 4		CRN 4	
Shaft seal and gasket kit	AUUE/V	268 985202	AUUE/V	223 985205
	BUBE	149 405096	BUBE	149 405096
	BUBV	147 405097	BUBV	147 405097
Wear parts kit	up to 6 stages	320 415286	up to 6 stages	261 415289
	7-12 stages	338 415287	7-12 stages	321 415290
	14-16 stages	403 415349	14-16 stages	410 415331
	19-22 stages	491 415288	19-22 stages	604 415291

all wear parts kits with ceramic bearings

CR / CRI / CRN 1, 2, 3, 4 & 5

		£	Product Code
Coupling complete	14/12	74	415060
	19/12	74	415061
	24/12	126	415062
	28/12	157	415063
	38/12	222	415065

* Consult Grundfos Product Center for Service Kit Catalogue and Exploded view of the above items

CR / CRI / CRN**CR / CRN 8 & 16**

	£	Product Code	£	Product Code
	CR 8 & 16		CRN 8 & 16	
Shaft seal and gasket kit	AUUE/V	256	985204	
	BUBE	186	425062	
	BUBV	202	425063	
	CR 8		CRN 8	
Wear parts kit	1-6 stages	379	425066	
	8-12 stages	508	425067	
	14-20 stages	685	425068	
	CR 16		CRN 16	
Wear parts kit	2 to 6 stages	423	335078	
	7 to 10 stages	584	335079	
	12 to 16 stages	786	335080	
all wear parts kit with silicon carbide bearings				
			£	Product Code
Coupling complete	14/16		78	339114
	19/16		78	339119
	24/16		115	339124
	28/16		147	339128
	38/16		178	339138
	42/16		229	339142

CR / CRI / CRN 10, 15 & 20

		£	Product Code
Shaft seal kit	HQQV 16 mm	262	96511845
	HQQE 16 mm	256	96511844
	HUUV 16 mm	261	96511841
	HUUE 16 mm	256	96511840
	HUBV 16 mm	245	96511837
	HUBE 16 mm	241	96511836
	HQBV 16 mm	251	96511849
	HQBE 16 mm	239	96511848
Gasket kit	FKM (Viton)	215	96509610
	EPDM	158	96509609
Coupling guard	MG 71-80	45	96509611
	MG 90-100	45	96509612
	MG 132	47	96509613
	MG 132	49	96509614
Plug for CR	EPDM / FKM (Viton)	162	96511311
Plug for CRI/CRN	EPDM / FKM (Viton)	149	96511312

includes air vent, pipe and drain plugs

Coupling complete	14/16	89	96511315
	19/16	89	96511317
	24/16	132	96511319
	28/16	106	96511350
	38/16	205	96511351
	42/16	263	96511352

	£	Product Code	£	Product Code
	CR / CRI / CRN 10		CR / CRI / CRN 15 & 20	
Wear parts kit	up to 8 stages	323	96511889	
	9-14 stages	456	96511922	
	16-22 stages	589	96511925	
SiC				

all wear parts kit with silicon carbide bearings

* Consult Grundfos Product Center for Service Kit Catalogue and Exploded view of the above items

CR / CRN**CR30 & CR60 model A (Cone & Nut version)**

		£	Product Code
Shaft seal and gasket kit	AUUE/V	293	345015

CR30 & CR60 model B

		£	Product Code
Shaft seal and gasket kit	AUUE/V	378	345122
	BBUE	295	345180
	BBUV	333	345181
Coupling complete	24/22	OBSOLETE	345106
	28/22	256	345107
	38/22	288	345108
	42/22	296	345109
	48/22	OBSOLETE	345110

	£	Product Code		£	Product Code	
	CR 30			CR 60		
Wear parts kits	1-5 stages	743	345199	2-6 stages	781	365103
	6-8 stages	1,262	345200	7-8 stages	1,031	365104
	9-11 stages	1,236	345201			
	12-13 stages	1,292	345202			
	14-16 stages	1,376	345203			

CRN30 & CRN60 model B

		£	Product Code
Shaft seal and gasket kit	AUUE/V	352	345111
	BBUE	529	345208
	BBUV	526	345209

	£	Product Code	£	Product Code		
	CRN 30		CRN 60			
Wear parts kits	1-5 stages	906	345189	2-6 stages	1,116	365111
	6-8 stages	1,323	345190	7-8 stages	1,301	365112
	9-11 stages	1,384	345191			
	12-13 stages	1,422	345192			
	14-16 stages	1,479	345193			

**CR 30****ALL ABOVE CODES DISCONTINUED - AVAILABLE WHILE STOCKS LAST**

CR / CRN**CR, CRN 32, 45, 64, 90, 120 & 150**

				£	Product Code
Shaft seal kit	HQQV	22 mm		354	96525490
	HQQE	22 mm		347	96525458
	HUUUV	22 mm		369	96436728
	HUUE	22 mm		379	96436727
	HQBV	22 mm		306	96525459
	HQBE	22 mm		295	96525457
	HBQV	32 mm	For CR/CRN 120 & 150	1,066	95059801
	HBQE	32 mm	55kW & 75kW	1,066	95059800
Coupling complete	24/22	MG 90		284	96416589
	28/22	MG 100-112		287	96416590
	38/22	MG 132		290	96416591
	42/22	MG 160		293	96416592
	48/22	MG 180		296	96416593
	55/22	Siemens 200-225		299	96416594
	60/32	Siemens 250		775	95059812
	65/32	Siemens 280		783	95059813
	42/22 with key and keyway	MG 160		213	98987855
	48/22 with key and keyway	MG 180		296	96416593
Plug	EPDM / FKM (Viton)			150	96505136
includes air vent, pipe and drain plugs					
Coupling guards kit	motor frame 90-132			98	96505134
	motor frame 160-225-280			99	96505135
Sensor kit (suitable for all CR(I)E with sensor (AN version))	MBS3000	0-4 bar	G 1/2"	275	96428014
	MBS3000	0-6 bar	G 1/2"	275	96428015
	MBS3000	0-10 bar	G 1/2"	275	96428016
	MBS3000	0-16 bar	G 1/2"	275	96428017
	MBS3000	0-25 bar	G 1/2"	275	96428018

CR, CRN 32

		£	Product Code	£	Product Code
		model A		model B*	
Wear parts kit	1-2 stages	176	96416728	125	98497130
	3-7 stages	419	96416729	286	98497451
	8-11 stages	584	96416730	386	98497452
	12-14 stages	692	96416731	470	98497453
Intermediate bearing kit	3-7 stages	OBSOLETE	96416574	N/A	
	8-14 stages	OBSOLETE	96416576	N/A	
Bottom bearing kit		277	96416580	N/A	
Gasket kit	EPDM			127	96416597
	FKM (Viton)			217	96416598

* all wear parts kit with graflon bearings

CR, CRN 45

		£	Product Code	£	Product Code
		model A		model B*	
Wear parts kit	1-2 stages	181	96416732	136	98497473
	3-7 stages	433	96416733	313	98497474
	8-10 stages	566	96416734	391	98497475
	11-13 stages	683	96472046	501	98497476
Intermediate bearing kit	3-7 stages	OBSOLETE	96416577	N/A	
	8-13 stages	OBSOLETE	96416578	N/A	
Bottom bearing kit		277	96416580	N/A	
Gasket kit	EPDM			153	96416599
	FKM (Viton)			251	96416600

* all wear parts kit with graflon bearings

CR / CRN

CR, CRN 64

		£	Product Code	£	Product Code
		model A		model B*	
Wear parts kit	1-2 stages	194	96416735	163	98497494
	3-8 stages	512	96416736	389	98497495
* all wear parts kit with graflon bearings					
Intermediate bearing kit	3-8 stages	195	96416573	N/A	
Bottom bearing kit		277	96416580	N/A	
Gasket kit	EPDM	N/A		153	96416599
	FKM (Viton)	N/A		251	96416600

CR, CRN 90

		£	Product Code	£	Product Code
		model A		model B*	
Wear parts kit	1-2 stages	198	96416737	161	98497509
	3-6 stages	434	96416738	322	98497510
Intermediate bearing kit	3-6 stages	N/A		N/A	
Gasket kit	EPDM			178	96416601
	FKM (Viton)			304	96416602

CR, CRN 120 & 150

		£	Product Code
Gasket kit	EPDM	101	95059804
	FKM (Viton)	590	95059805

	£	Product Code		£	Product Code	
	CR, CRN 120			CR, CRN 150		
Wear parts kit	1 stage	263	95059806	1 stage	265	95059809
	2-4 stages	637	95059807	2-3 stages	562	95059810
	5-7 stages	979	95059808	4-6 stages	966	95059811

Replacement for old Exxx shaft seals on CR(N)(E) 32, 45, 64 & 90

HQQx shafts seals have replaced all Exxx seals.

Old type	New type
EUHE EUBE EUUE EQQE	HQQE
EUHV EUBV EUUV EQQV	HQQV
EUUK	HQQK



CR pumps

CR / CRN**CR, CRN 95, 125, 155**

	Motor flange size	£	Product Code
Kit coupling guard	FF265-350	116	99196379
	FF350-400	116	99196380
	FF400-600	118	99196381
	FF500-600	118	99196382

	Motor/pump shaft diameter	£	Product Code
Kit coupling, complete	38/22	273	99190032
	42/22	273	99190035
	48/22	229	99190038
	55/22	229	99190039
	60/22	364	99190040
	65/28	418	99190041
	65/36	POA	99190044

		CR, CRN 95		CR, CRN 125, 155	
	n° stages	£	Product Code	£	Product Code
Kit strap	1	64	99190046	67	99190058
	2	66	99190047	68	99190059
	3	68	99190048	70	99190060
	4	70	99190049	72	99190061
	5	72	99190050	74	99190062
	6	74	99190051	76	99190063
	7	76	99190052	78	99190064
	8	77	99190053	80	99190065
	9	POA	99190054	82	99190066
	10	POA	99190055	85	99190067
	11	POA	99190056	POA	99190068
	12	POA	99190057	POA	99190069

		CR, CRN 95 (PN30)		CR, CRN 95 (PN40)	
	n° stages	£	Product Code	£	Product Code
Kit staybolt	1	82	99190078	POA	99190086
	2	86	99190079	POA	99190087
	3	91	99190080	130	99190088
	4	96	99190081	145	99190089
	5	100	99190082	160	99190090
	6	105	99190083	175	99190091
	7	109	99190084	190	99190092
	8	114	99190085	205	99190093
	9		N/A	POA	99190094
	10		N/A	POA	99190095
	11		N/A	POA	99190096
	12		N/A	POA	99190097

		CR, CRN 125,155 (PN30)		CR, CRN 125,155 (PN40)	
	n° stages	£	Product Code	£	Product Code
Kit staybolt	1	108	99190098	POA	99190105
	2	117	99190099	141	99190106
	3	123	99190100	161	99190107
	4	129	99190101	182	99190108
	5	144	99190102	202	99190109
	6	146	99190103	223	99190110
	7		N/A	243	99190111
	8		N/A	264	99190112
	9		N/A	284	99190113
	10		N/A	305	99190114
	11		N/A	325	99190115
	12		N/A	POA	99190116

CR / CRN

CR, CRN 95, 125, 155

	Shaft diameter	Elastomer	£	Product Code
Kit shaft seal	22mm	HQQE	269	99262346
		HQQV	278	99262347
		HQBE	260	99262348
		HQBV	270	99262349
		HUUE	POA	99416307
	28mm	HUUUV	POA	99416308
		HQQE	583	99262350
		HQQV	797	99262351
		HQBE	622	99262352
		HQBV	836	99262353
	36mm	HUUE	POA	99416318
		HUUUV	POA	99416319
		HQQE	POA	99262354
		HQQV	POA	99262355
		HQBE	POA	99262356
		HQBV	POA	99262357
		HUUE	POA	99416328
		HUUUV	POA	99416329

	Shaft diameter	Elastomer	£	Product Code
Kit shaft seal, wear parts only	28mm	HQQE	POA	99262358
		HQQV	POA	99262359
		HQBE	POA	99262360
		HQBV	POA	99262361
	36mm	HQQE	POA	99262362
		HQQV	POA	99262363
		HQBE	POA	99262364
		HQBV	POA	99262365

	Elastomer	£	Product Code
Kit plug	EPDM	121	99262366
	FKM	121	99262367
	EPDM with TDH in base	136	99262370
	FKM with TDH in base	140	99262371

	Shaft seal diameter	Elastomer	£	Product Code
Kit o-ring	22mm	CR 95 EPDM	137	99262378
		FKM	221	99262379
		CR 125, 155 EPDM	151	99262380
		FKM	243	99262381
	28mm	CR 95 EPDM	POA	99262384
		FKM	POA	99262385
		CR 125, 155 EPDM	161	99262386
		FKM	408	99262387
	36mm	CR 125, 155 EPDM	POA	99262392
		FKM	POA	99262393

	£	Product Code
Kit bottom flange		99262396

			Shaft diameter		Stages	SiC		WC	
						£	Product Code	£	Product Code
Kit bearing	CR, CRN 95	22mm	1	165	99262442	289	99415811		
			2-4	148	99262443	460	99415812		
			5-12	237	99262446	469	99415825		
	CR, CRN 95-155	28mm	1-4	POA	99262444	383	99415823		
			5-12	POA	99262447	674	99415826		
			1-4	POA	99262445	POA	99415824		
	36mm	5-12	POA	99262448	POA	99415827			

CR / CRN**CR, CRN 95, 125, 155**

			£	Product Code
Kit Thrust Handling Device	CR 95	SiC/SiC	POA	99262409
		WC/SiC	POA	99445736
	CR 125	SiC/SiC	POA	99262410
		WC/SiC	2,142	99445737
	CR 155	SiC/SiC	POA	99262411
		WC/SiC	2,456	99445738

		Elastomer	£	Product Code
Kit o-ring for THD	CR 95	EPDM	POA	99262397
		FKM	POA	99262398
	CR 125	EPDM	139	99262399
		FKM	207	99262400
	CR 155	EPDM	140	99262401
		FKM	207	99262402

	Stages		Shaft diameter	£	Product Code
Kit wear parts	1-4	CR, CRN 95	22mm	215	99262415
			28mm	POA	99262416
		CR, CRN 125	28mm	282	99262417
			36mm	POA	99262418
		CR, CRN 155	28mm	353	99262419
			36mm	POA	99262420
	5-8	CR, CRN 95	22mm	369	99262424
			28mm	POA	99262425
		CR, CRN 125	28mm	517	99262426
			36mm	POA	99262427
		CR, CRN 155	28mm	641	99262428
			36mm	POA	99262429
	9-12	CR, CRN 95	22mm	POA	99262433
			28mm	POA	99262434
		CR, CRN 125	28mm	781	99262435
			36mm	POA	99262436
		CR, CRN 155	28mm	998	99262437
			36mm	POA	99262438

		Material	Size	£	Product Code
Kit loose flange	CR, CRN 95	Cast iron	DN100 PN16	132	99432754
			DN100 PN25/40	145	99432755
		Stainless steel	DN100 PN16	499	99432731
			DN100 PN25/40	579	99432732
	CR, CRN 125, 155	Cast iron	DN150 PN16	359	99432761
			DN150 PN25/40	351	99432760
		Stainless steel	DN150 PN16	689	99432733
			DN150 PN25/40	881	99432734

			£	Product Code
Spare base	CR 95	Loose flange	POA	99196466
		Loose flange	1,633	99196467
	CRN 95	Collar flange PN16	POA	99196468
		PJE flange	POA	99196469
		Loose flange with THD	POA	99196470
		PJE flange with THD	POA	99196471
	CR 125, 155	Loose flange	POA	99196472
		Loose flange	POA	99196473
	CRN 125, 155	Collar flange PN10	POA	99196474
		PJE flange	POA	99196475
		Loose flange with THD	4,406	99196476
		PJE flange with THD	4,669	99196477

CR / CRN**CR, CRN 95, 125, 155**

	Shaft seal thread diameter		£	Product Code
Spare cover	CR 95	M50	1,306	99196493
	CRN 95	M50	1,306	99196494
		M66	POA	99196495
	CR 125, 155	M50	519	99196496
	CRN 125, 155	M50	1,773	99196497
		M66	1,773	99196498

	nº stages	CR 95 (PN30)		CRN 95 (PN30)	
		£	Product Code	£	Product Code
	1	306	99196401	334	99196419
	2	369	99196402	419	99196420
	3	446	99196413	520	99196421
	4	518	99196414	610	99196422
	5	646	99196415	754	99196423
	6	726	99196416	855	99196424
	7	834	99196417	974	99196425
	8	918	99196418	1,073	99196426

	nº stages	CR, CRN 125, 155 (PN30)	
		£	Product Code
Spare sleeve	1	474	99196439
	2	636	99196440
	3	793	99196441
	4	989	99196442
	5	1,164	99196443
	6	1,348	99196444

	nº stages	CRN 95 (PN40)		CRN 125, 155 (PN40)	
		£	Product Code	£	Product Code
	1	POA	99196427	POA	99196445
	2	POA	99196428	737	99196446
	3	663	99196429	919	99196447
	4	774	99196430	1,137	99196448
	5	916	99196431	1,357	99196449
	6	1038	99196432	POA	99196450
	7	1149	99196433	POA	99196451
	8	1271	99196434	POA	99196452
	9	POA	99196435	POA	99196453
	10	POA	99196436	POA	99196454
	11	POA	99196437	POA	99196455
	12	POA	99196438	POA	99196456

CRT

CRT 2 & 4

	shaft Ø	£	Product Code
Coupling complete	14/12	77	415060
Coupling complete	19/12	77	415061
Coupling complete	24/12	131	415062
Coupling complete	28/12	162	415063
Coupling complete	38/12	231	415065

CRT 2

	Production date (yr wk)		£	Product Code
Shaft seal kit	before 0336	AUUE	310	405346
Shaft seal kit	before 0336	AUUV	284	405349
Wear parts kits	before 0336	2-10 stages	666	96434799
Wear parts kits	before 0336	11-18 stages	628	96434800
Wear parts kits	before 0336	22-26 stages	763	96434801
Shaft seal kit	after 0335	AUUE	317	96513598
Shaft seal kit	after 0335	AUUV	347	96513599
Wear parts kits	after 0335	2-9 stages	387	96513600
Wear parts kits	after 0335	11-18 stages	512	96513601
Wear parts kits	after 0335	22-26 stages	POA	96513602

CRT 4

	Production date (yr wk)		£	Product Code
Shaft seal kit	before 0336	AUUE	310	405346
Shaft seal kit	before 0336	AUUV	284	405349
Wear parts kits	before 0336	1-6 stages	687	96434802
Wear parts kits	before 0336	7-12 stages	614	96434803
Wear parts kits	before 0336	14-16 stages	712	96434804
Wear parts kits	before 0336	19-22 stages	853	96434805
Shaft seal kit	after 0335	AUUE	317	96513598
Shaft seal kit	after 0335	AUUV	347	96513599
Wear parts kits	after 0335	1-6 stages	393	96513603
Wear parts kits	after 0335	7-12 stages	500	96513604
Wear parts kits	after 0335	14-16 stages	584	96513605
Wear parts kits	after 0335	19-22 stages	682	96513606



CRT

CRT

CRT 8 & 16

			£	Product Code
Coupling complete	14/16	CRT 8 & 16	78	339114
Coupling complete	19/16	CRT 8 & 16	78	339119
Coupling complete	24/16	CRT 8 & 16	115	339124
Coupling complete	28/16	CRT 8 & 16	147	339128
Coupling complete	38/16	CRT 8 & 16 before 0405	178	339138
Coupling complete	42/16	CRT 8 & 16 before 0405	229	339142
Coupling complete	38/16 short	CRT 8 & 16 after 0404	205	96511351
Coupling complete	38/16	CRT 8 & 16 after 0404	OBSOLETE	96491088
Coupling complete	42/16 short	CRT 8 & 16 after 0404	OBSOLETE	96492113
Coupling complete	42/16	CRT 8 & 16 after 0404	263	96511352
Gasket kit	after 0404	CRT 8 & 16 FFKM	2,364	96545210

CRT 8

			£	Product Code
Shaft seal kit	before 0405	AUUE	409	425303
Shaft seal kit	before 0405	AUUV	379	425304
Wear parts kits	before 0405	1-8 stages	818	96434806
Wear parts kits	before 0405	10-14 stages	907	96434807
Wear parts kits	before 0405	16-20 stages		96434808
Shaft seal kit	after 0404	AUUE	426	96521638
Shaft seal kit	after 0404	AUUV	465	96521639
Wear parts kits	after 0404	1-6 stages EPDM	517	96521680
Wear parts kits	after 0404	10-14 stages EPDM	726	96521681
Wear parts kits	after 0404	17-20 stages EPDM	947	96521682

CRT 16

			£	Product Code
Shaft seal kit	before 0405	AUUE	409	425303
Shaft seal kit	before 0405	AUUV	379	425304
Shaft seal kit	after 0404	AUUE	426	96521638
Shaft seal kit	after 0404	AUUV	465	96521639
Wear parts kits	before 0405	2-6 stages	1,017	96434809
Wear parts kits	before 0405	7-10 stages	1,046	96434810
Wear parts kits	before 0405	12-16 stages	1,398	96434811
Wear parts kits	after 0404	2-5 stages	520	96521686
Wear parts kits	after 0404	6-10 stages	753	96521687
Wear parts kits	after 0404	12-17 stages	1,007	96521688



CRT pump

CRK, SPK**CRK 2 & 4**

				£	Product Code
Shaft seal kit		AUUV		155	415080
		BUBV		141	415085
		AUUK		894	985720
Wear parts kit	CRK 2 model A, B & C	up to 18 stages	FKM	188	98311420
			EPDM	165	98311415
		up to 26 stages	FKM	280	98331664
			EPDM	165	98311415
	CRK 4	up to 12 stages	FKM	249	98311432
			EPDM	219	98311416
		up to 16 stages	FKM	332	98311435
			EPDM	302	98311417
		up to 22 stages	FKM	272	98311436
			EPDM	242	98311419
Rectangular flange				42	405178

CRK 8 & 16

				£	Product Code
Shaft seal kit		AUUV		190	425089
Wear parts kit	CRK 8 model B	2-8 chambers	1-8 impellers	294	425090
		10-14 chambers	1-14 impellers	460	425091
		16-20 chambers	1-20 impellers	457	425092
	CRK 16	2-6 chambers	1-6 impellers	257	335091
		7-10 chambers	7-10 impellers	372	335092
		12-16 chambers	12-16 impellers	509	335093

CRK 30 & 60

				£	Product Code
Shaft seal kit				362	345294
Wear parts kit	CRK 30 model A	2-3 chambers	1-3 impellers	OBSOLETE	345290
		4-16 chambers	1 impeller		
		4-11 chamber	2-11 impellers	OBSOLETE	345291
		12-16 chambers	2-6 impellers		
		12-16 chambers	7-10 impellers	OBSOLETE	345292
		12-16 chambers	11-16 impellers	OBSOLETE	345293
	CRK 60	2-3 chambers	1-3 impellers	OBSOLETE	365196
		4-10 chambers	1 impeller		
		4-10 chambers	2-8 impellers	OBSOLETE	365197

SPK 2, 4 & 8

				£	Product Code
Shaft seal kit	SPK 1, 2 & 4 model C & D	CVBV		81	395008
		AUUV		142	395091
Wear parts kit	SPK 1, 2 & 4 model C & D	1-8 stages		259	395090
		9-23 stages		380	395089
	SPK 8	1-15 chambers	1 impeller	283	395093
		2-15 chambers	2-3 impellers incl. SPK 8-5/5	296	395094
		7-15 chambers	5 impellers excl. SPK 8-5/5	398	395095
			2-3 impellers with extension pipe		
		7-15 chambers	7-9 impellers excl. SPK 8-12/9	465	395096
		12-15 chambers	12-15 impellers	599	395097
		12 chambers	9 impellers incl. SPK 8-12/9	573	395098
		15 chambers	5-15 impellers with extension pipe		
Rectangular flange	SPK 1, 2 & 4 (model C & D)			54	395104
	SPK 8			42	405178

MTH, MTR

MTH

			£	Product Code
Shaft seal kit	MTH 2 & 4	AUUV	91	435045
		AQQV	161	98455535
	MTH 8, 12 & 16	AUUV	91	96431994
Wear parts kit	MTH 2	3-4 chambers	95	435032
		5-11 chambers	155	435033
	MTH 4	2-3 chambers	118	445057
		4-8 chambers	164	445058
	MTH 8, 12		502	96435991
	MTH 16		231	96435992

MTR 1S, 1, 3, 5 & 8

			£	Product Code
Shaft seal kit		HUUE	285	96455084
		HUUV	292	96455085
		HQQE	286	96455086
		HQQV	294	96455087
		HUUK	751	96533324
		HQQK	745	96533326

		EPDM		FKM		
		£	Product Code	£	Product Code	
Wear parts kit	MTR 1S, 1 & 3	2-9 chambers *	155	96530909	155	96530909
		10-19 chambers	239	98311342	269	98311373
		20-27 chambers	314	98311345	285	98311381
		29-36 chambers	391	98311346	435	98311382
		37-42 chambers	420	98311347	424	98311383
		43-49 chambers	453	98311348	458	98311384
	MTR 5	2-7 chambers *	196	96531003	196	96531003
		8-16 chambers	339	98311349	345	98311385
		17-22 chambers	370	98311350	516	98311386
		24-32 chambers	511	98311371	567	98311388
	MTR 8	2-7 chambers *	177	98788385	177	98788385
		8-16 chambers	232	98788386	238	98807648
		17-22 chambers	298	98788387	325	98807649
		24-31 chambers	417	98788388	408	98807650

* without o-ring

MTR 10, 15 & 20

			£	Product Code
Shaft seal kit		HUUE	256	96511840
		HUUV	261	96511841
		HQQE	256	96511844
		HQQV	262	96511845
		HUUK	934	96511842
		HQQK	931	96511846
Wear parts kit	MTR 10	2-9 chambers	363	96531041
		10-16 chambers	508	96531042
		18-22 chambers	560	96531043
		23-27 chambers	484	97689849
		28-31 chambers	668	97689850
	MTR 15 & 20	2-9 chambers	359	96531044
		10-17 chambers	522	96531045
		18-21 chambers	576	97689487

MTR**MTR 32, 45 & 64 - model A**

			£	Product Code	
Shaft seal kit		HUUE	401	96441768	
		HUUV	347	96525458	
		HQQE	354	96525490	
		HQQV	379	96436727	
		HUUK	2,019	96533367	
		HQQK	2,000	96533369	
Wear parts kit	MTR 32	1-4 chambers	1-4 impellers	303	96430767
		5-8 chambers	1-3 impellers	316	96491254
		9-14 chambers	1-3 impellers	303	96491255
		5-8 chambers	5-8 impellers	524	96430768
		9-14 chambers	4-8 impellers	494	96491256
		9-14 chambers	9-12 impellers	741	96430769
	MTR 45	1-4 chambers	1-4 impellers	318	96430773
		5-8 chambers	1-3 impellers	325	96491257
		9-12 chambers	1-3 impellers	302	96491370
		5-8 chambers	4-8 impellers	552	96430775
		9-12 chambers	4-8 impellers	509	96491371
		MTR 64	1-4 chambers	1-4 impellers	315
	5-8 chambers		1-3 impellers	340	96491372
	9-12 chambers		1-3 impellers	322	96491373
	5-8 chambers		4-5 impellers	478	96430820
	9-12 chambers		4-5 impellers	447	96491374

MTR 32, 45, 64 & 90 - model B

			£	Product Code	
Shaft seal kit		HUUE	401	96441768	
		HUUV	347	96525458	
		HQQE	354	96525490	
		HQQV	379	96436727	
		HUUK	2,019	96533367	
		HQQK	2,000	96533369	
Wear parts kit	MTR 32	1-4 chambers	1-4 impellers	141	98628296
		5-8 chambers	1-3 impellers	152	98628298
		9-12 chambers	1-3 impellers	167	98628337
		5-8 chambers	5-8 impellers	207	98629661
		9-14 chambers	4-8 impellers	225	98629668
		9-14 chambers	9-14 impellers	291	98629669
		15-18 chambers	1-3 impellers	181	98629682
		15-18 chambers	4-8 impellers	238	98629683
		15-18 chambers	9-14 impellers	304	98629684
	MTR 45	1-4 chambers	1-4 impellers	170	98629686
		5-8 chambers	1-3 impellers	177	98629689
		9-12 chambers	1-3 impellers	167	98629690
		5-8 chambers	4-8 impellers	241	98629716
		9-12 chambers	4-8 impellers	239	98629718
13-17 chambers		1-3 impellers	178	98629719	
13-17 chambers		4-8 impellers	250	98629732	
MTR 64	1-4 chambers	1-4 impellers	172	98629735	
	5-8 chambers	1-3 impellers	184	98629736	
	9-12 chambers	1-3 impellers	195	98629738	
	5-8 chambers	4-5 impellers	187	98629739	
	9-12 chambers	4-5 impellers	211	98629740	
	13-17 chambers	1-3 impellers	213	98629741	
	13-17 chambers	4-5 impellers	219	98629743	

CLM / CLP / CDM / CDP / NM / NP / LM / LP / LMD / LPD

CLM / CLP / CDM / CDP model A (smooth base)

				£	Product Code
Shaft seal kit	32mm shaft	CLM 100 & CLM 125	BAQE	666	S0608156
		CLM 125 & 150			
		CLP 65 & CLP 80 (11kW and above)	BQQE	1,662	96479822
		CDP 80 (11kW and above) & CDP			
Shaft seal kit	45mm shaft	CLM 150 & CLM 200	BAQE	1,131	S0608158
		CDM 200 & 210			
		CLP 100	BQQE	1,775	96479823
		CDP 125			

CLM / CLP / CDM model B (ribbed base)

				£	Product Code
Shaft seal kit	33mm shaft	CLM 100 & CLM 125 CDM 125 & CDM 150	BBUE	649	S0810108
			BQQE	1,173	96432382
			GQQE	2,050	96432384
Shaft seal kit	33mm shaft	CLM 150 & CLM 200 CDM 200 & CDM 210	BBUE	962	S0810109
			BQQE	1,194	96432381
			GQQE	1,331	96432383

LM / LP (model C & D) / NM / NP

				£	Product Code
Shaft seal and gasket kit	16mm shaft	o'ring type (EPDM)	AUUE	355	485113
		bellows type (EPDM)	BUBE	235	485351
		reduced face for glycol mixes / chilled water	RUUE/V	298	985845
Shaft seal and gasket kit	22mm shaft	o'ring type (EPDM)	AUUE	392	485114
		bellows type (EPDM)	BBUE	421	485278
		reduced face for glycol mixes / chilled water	RUUE/V	351	985909
Shaft seal and gasket kit	33mm shaft	bellows type (EPDM)	BBUE	759	485353
		reduced face for glycol mixes / chilled water	GQQE	2,275	985624
Wear parts kit	16mm shaft	includes AUUE shaft seal and shaft		358	485125
	22mm shaft	includes AUUE shaft seal and shaft		631	485122
Wear parts kit	16mm shaft	includes BUBE shaft seal and shaft		383	485352
	22mm shaft	includes BBUE shaft seal and shaft		669	485279
Wear parts kit	33mm shaft	includes BUBE shaft seal and shaft		1,311	485354
	33mm shaft	includes BUUE shaft seal and shaft		1,191	485449
Flap valve for twin head pumps		LMD 50		348	485363
		LPD 65, LMD 65		OBSOLETE	485364
		LPD 80, LMD 80		OBSOLETE	485365
		LPD 100, LMD 100, LPD 125		OBSOLETE	485366
Coupling complete		14/16		78	339114
		19/16		78	339119
		24/16		115	339124
		28/16		147	339128
		28/22		256	345107
		38/22		288	345108
		42/22		296	345109



CDM pump

UMT, UPT					
UMT(D) / UPT(D)					
		Shaft diameter	Model	£	Product Code
Shaft seal kit	AUUE	16mm	B, C, D	OBSOLETE	495063
	BUBE	16mm	B, C, D	OBSOLETE	495078
	RUUE/V	16mm	B, C, D	183	985844
	BQQE	16mm	B, C, D	OBSOLETE	96436691
	CVBE/V	12mm	A, B	185	495067
Wear parts kits with shaft seal	-	16mm	A	OBSOLETE	985271
	AUUE	16mm	B, C, D	OBSOLETE	495064
	BUBE	16mm	B, C, D	OBSOLETE	495079
	CVBE UPT 25-50	12mm	A	OBSOLETE	96552581
	CVBE UPT 25-50	12mm	B	OBSOLETE	96552567
	CVBE UPT 25-90	12mm	A	OBSOLETE	96552582
	CVBE UPT 25-90	12mm	B	OBSOLETE	96552568
	CVBE UPT 32-30; 40-50	12mm	A	OBSOLETE	96552583
	CVBE UPT 32-90; 40-90	12mm	A	OBSOLETE	96552584
	CVBE UPTD 25/32/40-50;40-90	12mm	A	OBSOLETE	495068
	CVBE UPTD 25/32/40-50;40-90	12mm	B	OBSOLETE	495083
				£	Product Code
Coupling complete		14/16		78	339114
		19/16		78	339119
		24/16		115	339124
		28/16		147	339128
Flap valve for twin head pumps				OBSOLETE	545196

Please check Grundfos Product Centre for complete pump service drawings



UMT and UPT range

TP

TP series 100 & 200

				£	Product Code	
Shaft seal kit	12mm shaft	Series 100 model A	TP 25-50/2; -80/2; -90/2	BUBE	142	96409293
			TP 32-50/2, -80/2, -90/2	BQQE	259	96508806
			TP 40-50/2, -80/2, -90/2	GQQE	291	96508807
	12mm shaft	Series 100 model B	TP 25 all	BUBE	227	98284949
			TP 32-50/2, -80/2, -90/2	BQQE	201	98284950
			TP 40-50/2, -80/2, -90/2	GQQE	321	98284961
	12mm shaft	Series 200	TP 32-60/2 TP 40-30/x	AUUE	140	96409264
				RUUE/V	219	96432881
				BQQE	248	96488632
				BQQV	284	96488634
				BUBE	213	96409265
				AUUE	269	96409266
				RUUE/V	183	985844
	16mm shaft	Series 200	all others	BQQE		98313337
Wear parts kit	Series 100 model A		TP 25-50/2		330	96408790
			TP 25-90/2		OBSOLETE	96408791
			TP 32-50, 40-50 /2		252	96408792
			TP 32-90, 40-90 /2		314	96408793
	Series 100 model B		TP 25-50		235	98284938
			TP 25-80		233	98284939
			TP 32-50; TP 40-50		214	98284941
			TP 32-80; TP 40-80		215	98284942
			TP 25-90, TP 32-90; TP 40-90		248	98284940
			TP 32-60/2		290	96414029
	Series 200		TP 40-60/4		240	96436361
			TP 32-30/4		347	96414027
			TP 32-40;		259	96414028
			TP 32 -40, -60/4, -150, -180, -220, -230, -260, -330			
			TP 40 -80/4, -90/4, -160, -180, -190, -230, -270, -330, -390		264	96414031
			TP 50 -60/4, -80/4, -120, -160, -180, -240			
			TP 65 -120, -160			
			TP 80 -30, -40, -60, -80		292	96409269
			TP 100 except -160			
			TPE model B		TPE 25-50	
	TPE 25-80				191	98284944
	TPE 32-50; TPE 40-50				253	98284945
	TPE 32-80; TPE 40-80				223	98284946
	TPE 25-90, TPE 32-90; TPE 40-90				248	98284940
Coupling complete			11/12		141	495081
			14/12		77	415060
			16/16		78	339114
			19/16		78	339119
			24/16		115	339124
			28/16		147	339128
Flap valve for twin head pumps			TPD 32		23	96407253
			TPD 40		31	96407254
			TPD 50		86	96407255
			TPD 65		54	96407256
			TPD 80		38	96407257
			TPD 100		116	96407258

For **blanking plates** for twin head pumps, please, consult Cat1 price list.



TP Series 100



TPD Series 200

TP

TP series 300

			£	Product Code
Shaft seal kit	BAQE		147	96488302
	BAQV		177	96548353
	BQQE		161	98434904
	BQQV		196	98434905
	BBQE		148	96551963
	GQQE		217	96488303
	GQQV		291	96504870
	DAQF		1,443	96548355
		£	Product Code	
Shaft seal kit	BAQE	194	96537605	
	BAQV	276	96548357	
	BQQE	240	98434906	
	BQQV	310	98434908	
	BBQE	212	96551928	
	GQQE	332	96537606	
	GQQV	559	96537608	
	DAQF	1,671	96548359	
	DQQE	2,803	97769897	
		£	Product Code	
Shaft seal kit	BAQE	342	96306475	
	BAQV	950	96658801	
	BQQE	431	98434943	
	BQQV	620	98434944	
	BBQE	930	96658804	
	GQQE	777	96306477	
	GQQV	1,191	96658803	
	DAQF	2,021	96658807	
	DQQE	8,132	97685596	
		£	Product Code	
Shaft seal kit	BAQE	436	96658812	
	BAQV	969	96658815	
	BQQE	770	98434945	
	BQQV	1,139	98434947	
	BBQE	927	96658818	
	GQQE	811	96658814	
	GQQV	1,431	96658817	
	DAQF	2,067	96658820	
	DQQE	9,129	97685598	
Length			£	Product Code
Spacer ring for shaft seal	38mm shaft	15.5mm	113	96591277
	28mm shaft	7.5mm	94	96938597
	38mm shaft	10mm	80	96938599
	48mm shaft	15mm	108	96938602
	55mm shaft	22.5mm	115	96938604
	60mm shaft	17.5mm	152	96938606
	38mm shaft	15.5mm	140	96930797
	38mm shaft	10mm	140	96930797

		£	Product Code	£	Product Code
		EPDM (E)		FKM (V)	
Gasket kit	177.39x3,53	30	97757659	47	97757697
	221.84x3,53	32	97757671	44	97757698
	253.6x3,53	33	97757672	63	97757699
	278.99x3,53	34	97757673	54	97757703
	329.79x3,53	37	97757675	68	97757705
	430.66x3,53	63	97757676	89	97757707

		£	Product Code
		FXM (F)	
Gasket kit	177.39x3,53	319	97790022
	221.84x3,53	839	97790080
	253.6x3,53	855	97790081
	278.99x3,53	654	96887763
	329.79x3,53	1,303	96887764
	430.66x3,53	1,436	96887765

Confirm gasket kit PN for each pump model using the Grundfos Product Center

For **blanking plates** for twin head pumps, please, consult Cat1 price list.



TP Series 300

TP

TP series 300

			motor frame	£	Product Code
Shaft kit	28mm shaft		71	453	96039349
			80	476	96039350
			90	487	96039351
			100-112	505	96039352
			132	580	96039353
			160	650	96039354
			180	722	96039355
			200	765	96039356
Shaft kit	38mm shaft		100-112	777	96039357
			132	433	96039358
			160	749	96039359
			180	801	96039360
			200	861	96039361
			225-250	1,019	96537609
	225 (2 poles)	722	96537610		
Shaft kit	48mm shaft		180-200	869	96306478
			225	1,405	96306479
Shaft kit	55mm shaft		180-200	931	96306488
			225-250-280-315	1,790	96306480
Wear ring kit	Bronze		TP 150 in pump housing D185/D199x15	190	96810109
			TP 150 in cover D154/D168x15	162	96797628
			TP 200 in pump housing D224/D238x15	237	96810112
			TP 200 in cover D224/D238x15	237	96810112

		£	Product Code	£	Product Code
Flap valve for twin head pumps	TPD, TPED 32, 40, 50	350	96488633	Cover	
	TPD, TPED 65			POA	96476895
	TPD, TPED 80			POA	96476895
	TPD, TPED 100, 125	450	96537612	POA	96506492
	TPD, TPED 125, 150			POA	96506493
		535	96537613	POA	96506494
			96537614	POA	96506495

TPE2, TPE2 D, TPE3, TPE3 D

		£	Product Code
Shaft seal kit	BUBE	207	98660102
	BQQE	356	98660103
	GQQE	329	98660104
	BUBV	219	98660105
	BQQV	393	98660106
	GQQV	453	98660107
Flap valve for twin head pumps	DN 32	126	98660108
	DN 40	132	98660109
	DN 50	135	98660110
	DN 65	142	98660111
	DN 80	148	98660112
	DN 100	175	98660113
Gasket kit	EPDM	84	98660099
	FKM	99	98811502
Air vent screw		43	98164277
Bleed Screw		51	96620482
Clamp		158	98660114
Motor stool		250	98660053
Sensor and cable		351	98802463

NB, NK

NK - model A (for PN Kxxxxxxx and Dxxxxxxx)

		£	Product Code
Shaft seal kit	BAQE	28 mm	133 97904582
		38 mm	194 96537605
		48 mm	263 96591237
		65 mm	523 96591633
	GQQE	28 mm	217 96488303
		38 mm	332 96537606
		48 mm	285 96433691
		65 mm	730 96433692
	BQQE	28 mm	161 98434904
		38 mm	POA 96537607
		48 mm	POA 96587317
		65 mm	POA 96422160
	BAQV	28 mm	92 97904583
		38 mm	POA 96549067
		48 mm	559 96587314
		65 mm	POA 96029562
	GQQV	28 mm	POA 96433693
		38 mm	POA 96433694
		48 mm	POA 96433695
		65 mm	POA 96433696
	BQQV	28 mm	154 97904586
		38 mm	POA 96549066
		48 mm	POA 96549069
		65 mm	POA 96029558
	DAQF	28 mm	POA 96505023
		38 mm	POA 96505022
		48 mm	POA 96504926
		65 mm	2,372 96504927
	DQQE	28 mm	POA 96433681
		38 mm	POA 96433682
		48 mm	POA 96433683
		65 mm	POA 96433684
	DQQV	28 mm	POA 96433685
		38 mm	POA 96433686
		48 mm	POA 96433687
		65 mm	POA 96433688



NK pump - model A

NB, NK

NB & NK - model B

			Pump material version: A, B, C, D, E, F, G, H, I, J, K, M, N, P, S, T, U, W		Pump material version: L and R	
			£	Product Code	£	Product Code
Shaft seal kit	BAQE	28 mm	147	96488302	804	96658825
		38 mm	194	96537605	942	96658836
		48 mm	225	96306472	1,134	96658857
		55 mm	342	96306475	2,724	97769919
		60 mm	436	96658812	4,887	97769920
	GQQE	28 mm	217	96488303		
		38 mm	332	96537606		
		48 mm	586	96306474		
		55 mm	777	96306477		
		60 mm	811	96658814		
	BQQE	28 mm	161	98434904	959	96658826
		38 mm	240	98434906	1,387	96658837
		48 mm	328	98434909	1,876	96658858
		55 mm	431	98434943	1,486	97769927
		60 mm	770	98434945	2,974	97769928
	BAQV	28 mm	177	96548353	1,143	96658827
		38 mm	276	96548357	976	96658838
		48 mm	773	96658791	1,959	96658860
		55 mm	950	96658801	2,404	97769921
		60 mm	969	96658815	4,887	97769922
	GQQV	28 mm	291	96504870		
		38 mm	559	96537608		
		48 mm	1,013	96658793		
		55 mm	1,191	96658803		
		60 mm	1,431	96658817		
	BQQV	28 mm	196	98434905	1,189	96658828
		38 mm	310	98434908	1,274	96658839
		48 mm	429	98434941	1,894	96658861
		55 mm	620	98434944	1,486	97769929
		60 mm	1,139	98434947	3,199	97769930
	DAQF	28 mm	1,443	96548355	1,889	96658831
		38 mm	1,671	96548359	11,010	96658852
		48 mm	1,847	96658796	12,282	96658863
		55 mm	2,021	96658807	6,925	97536552
		60 mm	2,067	96658820	8,491	97536595
	DQQE	28 mm	2,763	97769895	7,734	97769896
		38 mm	2,803	97769897	8,075	97769898
		48 mm	4,575	97685509	8,555	97685510
		55 mm	8,132	97685596	11,163	97685597
		60 mm	9,129	97685598	12,042	97685599
	DQQV	28 mm	1,525	97769899	8,074	97769900
		38 mm	1,972	97769901	11,942	97769902
		48 mm	2,253	97685511	8,811	97685513
		55 mm	9,130	97685600	13,041	97685601
		60 mm	9,883	97685602	13,041	97685603
			£	Product Code	£	Product Code
Spacer ring for shaft seal	38mm shaft	15.5mm	113	96591277	166	96938601
	28mm shaft	7.5mm	94	96938597	162	96938598
	38mm shaft	10mm	80	96938599	172	96938600
	48mm shaft	15mm	108	96938602	178	96938603
	55mm shaft	22.5mm	115	96938604	229	96938605
	60mm shaft	17.5mm	152	96938606	430	96938607
	38mm shaft	15.5mm	140	96930797	234	96930799
	38mm shaft	10mm	140	96930797	234	96930799

NB, NK**NB & NK - model B**

		Pump material version: A, B, C, D, E, F, G, H, S, T	
Dimensions	Material	£	Product Code
D63/D77x10	Bronze	82	96810098
D76/D90x10	Bronze	80	96810099
D90/D104x10	Bronze	84	96810100
D100/D114x10	Bronze	85	96810102
D112/D126x10	Bronze	89	96810103
D122/D136x10	Bronze	107	96810104
D130/D144x10	Bronze	118	96810106
D144/D158x15	Bronze	166	96810107
D154/D168x15	Bronze	162	96797628
D174/D188x15	Bronze	195	96810108
D185/D199x15	Bronze	190	96810109
D200/D214x15	Bronze	218	96810110
D210/D224x15	Bronze	234	96810111
D222/D272x15	Brass	591	96939611
D224/D238x15	Bronze	237	96810112
D230/D280x15	Brass	841	96939612
D240/D290x15	Brass	949	96939613
D250/D300x15	Brass	913	96939614
D260/D310x15	Brass	1,328	96939615

Wear ring kit

		Pump material version: I, J, K, L, M, N, P, R, U, W	
Dimensions	Material	£	Product Code
D63x10	DIN 1.4517	235	97939264
D76x10	DIN 1.4517	185	96810134
D90x10	DIN 1.4517	191	96810136
D100x10	DIN 1.4517	197	96810138
D112x10	DIN 1.4517	201	96810142
D122x10	DIN 1.4517	206	96810146
D130x13	DIN 1.4517	230	96810150
D154x15	DIN 1.4517	267	96810152
D144x15	DIN 1.4517	187	96810148
D185x15	DIN 1.4517	290	96810154
D174x10	DIN 1.4517	324	97939254
D200x10	DIN 1.4517	303	97939258
D210x15	DIN 1.4517	375	96887262
D224x15	DIN 1.4517	434	97739717

**NK and NB pumps - model B**

NB, NK**NB & NK - model B**

		£	Product Code
Gasket kit	EPDM (E)	177,39x3,53	30 97757659
		221,84x3,53	32 97757671
		253,6x3,53	33 97757672
		278,99x3,53	34 97757673
		329,79x3,53	37 97757675
		430,66x3,53	63 97757676
		456,06x3,53	36 97757677
		548x6	68 97757679
	FFKM (K)	177,39x3,53	596 97904674
		221,84x3,53	1,976 97904691
		253,6x3,53	1,789 97904677
		278,99x3,53	2,572 96887760
		329,79x3,53	2,772 96887761
		430,66x3,53	3,348 96887762
	FKM (V)	548x6,00	7,732 97536606
		177,39x3,53	47 97757697
		221,84x3,53	44 97757698
		253,6x3,53	63 97757699
		278,99x3,53	54 97757703
		329,79x3,53	68 97757705
		430,66x3,53	89 97757707
		456,06x3,53	108 97757708
	HNBR (X)	548x6	145 97757712
		177,39x3,53	166 97904675
		221,84x3,53	164 97904692
		253,6x3,53	164 97904678
		278,99x3,53	107 96887766
		329,79x3,53	2,190 96887767
	FXM (F)	430,66x3,53	2,454 96887768
		548x6,00	1,028 97536609
		177,39x3,53	319 97790022
		221,84x3,53	839 97790080
		253,6x3,53	855 97790081
		278,99x3,53	654 96887763
		329,79x3,53	1,303 96887764
		430,66x3,53	1,436 96887765
		456,06x3,53	2,944 97790102
		548x6,00	2,595 97536608

NB, NK**NK - model B**

		£	Product Code
Spacer coupling complete	H80 D24/L100/D14	962	96579717
	H80 D24/L100/D19	962	96579719
	H80 D24/L100/D24	962	96579720
	H80 D24/L140/D24	1,050	96579721
	H80 D24/L100/D28	962	96579722
	H80 D24/L140/D28	1,050	96579724
	H95 D24/L100/D38	1,147	96579726
	H95 D24/L100/D42	1,147	96579731
	H95 D24/L140/D42	1,252	96579732
	H110 D24/L100/D48	POA	96579733
	H110 D24/L140/D48	POA	96579755
	H125 D24/L100/D55	POA	96579763
	H125 D24/L140/D55	POA	96579766
	H80 D32/L140/D24	POA	96579785
	H80 D32/L140/D28	POA	96579788
	H95 D32/L140/D38	1,258	96579800
	H95 D32/L140/D42	1,254	96579802
	H110 D32/L140/D48	1,439	96579803
	H125 D32/L140/D55	1,601	96579804
	H140 D32/L140/D60	2,004	96579805
	H160 D32/L140/D65	1,504	96579806
	H80 D24/L140/D19	POA	96861578
	H95 D42/L140/D38	1,353	96861607
	H95 D42/L140/D42	1,289	96861609
	H110 D42/L140/D48	1,433	96861611
	H125 D42/L140/D55	1,644	96861613
	H140 D42/L140/D60	2,159	96861615
	H160 D42/L140/D65	2,554	96861617
	H200 D42/L140/D65	3,751	96861618
	H180 D42/L140/D75	3,291	96861623
	H200 D42/L140/D80	3,750	96861626
	H110 D48/L180/D48	1,705	96861631
	H125 D48/L180/D55	1,941	96861632
	H140 D48/L180/D60	2,561	96861633
	H160 D48/L180/D65	3,158	96861634
	H180 D48/L180/D70	3,801	96861636
	H180 D48/L180/D75	3,744	96861638
	H200 D48/L180/D80	4,261	96861640
	H225 D48/L180/D85	5,367	96861641
	H140 D60/L180/D55	2,306	96861646
	H140 D60/L180/D60	2,271	96861647
	H160 D60/L180/D65	2,821	96861648
	H180 D60/L180/D70	3,803	96861650
	H180 D60/L180/D75	3,746	96861651
	H200 D60/L180/D80	4,263	96861653
	H225 D60/L180/D85	5,369	96861654
	H250 D60/L180/D95	7,010	96861657
Coupling rubber parts for Flender spacer coupling	B/H80	67	96480015
	B/H95	79	96480016
	B/H110	90	96480017
	B/H125	82	96480018
	B/H140	118	96480019
	B/H160	144	96480040
	B/H180	189	96796254
	B/H200	205	96796255
	B/H225	235	96796259
	B/H250	282	96796260

SP				
SP1A & SP2A - model A				
			£	Product Code
Wear parts kit		6 stages	103	95054
		7-9 stages	109	55008
		10-15 stages	109	55009
		16-21 stages	131	95056
		22-26 stages	132	55010
		27-33 stages	158	55011
Wear parts kit		31-39 stages	175	105059
		40-48 stages	226	95059
		49-60 stages	278	95060
		61-75 stages	295	95061
		76-90 stages	326	95062
SP3A & SP5A - model A				
			£	Product Code
Wear parts kit	SP	1-6 stages	103	95054
		7-9 stages	109	55008
		10-15 stages	109	55009
		16-21 stages	131	95056
		22-26 stages	132	55010
		27-33 stages	158	55011
Wear parts kit	SP; SP-N	5 stages	100	105543
		6-10 stages	137	105544
		11-15 stages	162	55504
		16-24 stages	174	105546
		25-30 stages	175	105547
		31-39 stages	175	105059
		40-48 stages	226	95059
		49-60 stages	278	95060
		61-75 stages	295	95061
76-90 stages	326	95062		
Wear parts kit	SP-R	5 stages	94	105969
		6-10 stages	96	105970
		11-15 stages	115	105971
		16-24 stages	167	105972
		25-30 stages	146	105973
		31-39 stages	176	105974
		40-48 stages	204	105975
49-60 stages	237	105976		
Wear parts kit	SP-NE	12 stages	169	96440231
		25 stages	199	96440230
		33 stages	246	96440229
		45 stages	319	96440228
		60 stages	342	96440227
SP7 & SP9				
			£	Product Code
Wear parts kit *	SP	1 stage	60	98766923
		2-5 stages	86	98766939
		6-10 stages	80	98766936
		11-25 stages	119	98766941
		26-50 stages	154	98766947

* The number of stages refers to the wear part kit. For some pump models, more than one wear part kit might be required.

SP

SP8A - model A

			£	Product Code	£	Product Code
			before 9444 (yyww)		after 9444 (yyww)	
Wear parts kit	SP SP-R	5-10 stages	187	115046	114	96428935
		12-18 stages	285	115047	113	96428936
		21-25 stages	346	115048	211	96428937
		28-37 stages	488	115103	220	96428938
Wear parts kit	SP-N	5-10 stages	187	115587	114	96428935
		12-18 stages	285	115588	113	96428936
		21-25 stages	339	115589	211	96428937
Wear parts kit	SP-NE	5-10 stages	381	115567	377	96428939
		12-18 stages	571	115568	598	96428940
		21-25 stages	717	115569	831	96428941
		26-37 stages	N/A		920	96441561

SP11A & SP14A

			£	Product Code
Wear parts kit	SP	5 stages	172	75008
		7-13 stages	340	75009
		14-18 stages	406	75010
		20-25 stages	568	75011
Wear parts kit	SP -N	5 stages	146	75507
		7-13 stages	316	75508
		14-18 stages	385	75509
		20-25 stages	547	75510

SP11 & SP14

			£	Product Code
Wear parts kit *	SP	1 stage	65	98766927
		2-5 stages	78	98766933
		6-10 stages	86	98766939
		11-25 stages	110	98766945

* The number of stages refers to the wear part kit. For some pump models, more than one wear part kit might be required.

SP17 - model A

			£	Product Code
Wear parts kit	SP; SP-N; SP-R	1-5 stages	276	96421723
		6-16 stages	359	96421724
		17-26 stages	466	96421725
		27-40 stages	675	96440238
		up to 50 stages	658	96488045
		up to 60 stages	610	96488046
Impeller with split cone and nut	SP	SP	76	97506595
		SP -N	79	96903203
		SP -R	108	96903204
Split cone and nut	SP	SP	110	97508279
		SP -N	46	96901911
		SP -R	41	96901953
Split cone with stop nut	SP	SP	106	97508314
		SP -N	48	96901960
		SP -R	47	96901961

SP17 - model B

			Standard bearings		Wear resistant bearings	
			£	Product Code	£	Product Code
Wear parts kit	SP; SP-N; SP-R	1-5 stages	303	97945520	296	98098277
		6-12 stages	362	97945521	415	98098278
		13-19 stages	416	97937872	453	98098279
		20-30 stages	385	97937873	472	98098280
		31-40 stages	461	97937874	577	98098311
		41-50 stages	487	97937875	681	98098312
		51-60 stages	554	97937876	782	98098313

SP**SP30 - model A**

		£	Product Code
Wear parts kit	1-5 stages	199	96421732
	6-16 stages	352	96421733
	17-27 stages	433	96421734
	28-39 stages	616	96440246
	40-54 stages	798	96488047
Impeller with split cone and nut	SP	53	97506691
	SP -N	77	96903205
	SP -R	122	96903206
Split cone and nut	SP	62	97509658
	SP -N	46	96901972
	SP -R	54	96901973
Split cone with stop nut	SP	78	97509673
	SP -N	63	96901980
	SP -R	81	96901981

SP30 - model B

		Standard bearings		Wear resistant bearings	
		£	Product Code	£	Product Code
Wear parts kit	1-5 stages	252	97945522	285	98098314
	6-15 stages	360	97937877	458	98098315
	16-27 stages	497	97937878	608	98098316
	28-39 stages	613	97937879	778	98098317
	40-54 stages	687	97937880	989	98098318

SP46 - model A

		£	Product Code
Wear parts kit	1-6 stages	387	96440248
	7-10 stages	445	96440250
	11-16 stages	529	96440252
	17-24 stages	637	96440254
	25-37 stages	574	96488048

SP46 - model B

		Standard bearings		Wear resistant bearings	
		£	Product Code	£	Product Code
Wear parts kit	1-6 stages	305	97937881	313	98098319
	7-12 stages	381	97937882	459	98098320
	13-18 stages	455	97937883	518	98098321
	19-24 stages	528	97937884	618	98098322
	25-37 stages	615	97937885	822	98098323

SP60 - model A

		£	Product Code
Wear parts kit	1-6 stages	519	96440369
	7-10 stages	639	96440371
	11-16 stages	725	96440373
	17-22 stages	866	96440375
	23-30 stages	884	96488049

SP60 - model B

		Standard bearings		Wear resistant bearings	
		£	Product Code	£	Product Code
Wear parts kit	1-6 stages	301	97937886	310	98098324
	7-12 stages	378	97937887	415	98098325
	13-18 stages	452	97937888	516	98098326
	19-24 stages	477	97937889	615	98098327
	25-30 stages	523	97937890	710	98098328

SP				
SP77 - model C				
			£	Product Code
Wear parts kit	SP; SP-N; SP-R	1-8 stages	412	96440256
		9-14 stages	525	96440258
		15-22 stages	680	96440260
SP95 - model B				
			£	Product Code
Wear parts kit	SP; SP-N; SP-R	1-8 stages	522	96440715
		9-14 stages	635	96440716
		15-20 stages	648	96440717
SP125 - model C & D				
			£	Product Code
Wear parts kit	SP; SP-N; SP-R	1-4 stages	294	96440262
		5-6 stages	386	96440264
		7-10 stages	455	96440266
		11-17 stages	449	96488080
Impeller		SP	148	97506694
		SP -N	159	96903234
		SP -R	422	96903235
Reduced impeller		SP	132	97506727
		SP -N	166	96907105
		SP -R	421	96907107
Split cone with nut		SP	81	96903149
		SP -N	81	96903149
		SP -R	93	96903172
SP160 - model A & B				
			£	Product Code
Wear parts kit	SP; SP-N; SP-R	1-5 stages	369	205117
		6-9 stages	600	205118
		10-15 stages	427	96488081
Impeller		SP	157	97508270
		SP -N	141	96903236
		SP -R	436	96903237
Reduced impeller		SP	145	97508275
		SP -N	168	96907108
		SP -R	OBSOLETE	96907109
Split cone with nut		SP	81	96903149
		SP -N	81	96903149
		SP -R	93	96903172
SP215 - model B & C				
			£	Product Code
Wear parts kit	SP; SP-N; SP-R	1-2 stages	343	185033
		3-4 stages	397	185034
		5-7 stages	584	185035
		8-11 stages	655	185036
Impeller		SP	176	97508277
		SP -N	215	96903238
		SP -R	318	96903239
Reduced impeller		SP	199	97508278
		SP -N	274	96907110
		SP -R	317	96907111
Split cone with nut		SP	127	97524682
		SP -N	116	96903175
		SP -R	188	96903176

MS, MMS, SQ, SQE

SP 4" MOTOR CABLE

		£	Product Code
MS402 cable, 4G 1.5mm ² , 1.7m	plug connection one end	96	95920882
MS4000 Cable, 4G 1.5mm ² , 1.7m	plug connection both ends	100	95920909
MS4000 cable, 4G 1.5mm ² , 1.7m	plug connection one end	69	95920889
MS4000 cable R, 3x1x AWG14,	plug connection both ends	150	95920942

SP 6" MOTOR CABLE

		£	Product Code
MS6000 cable, 4 G 6mm ² , 5m		175	95920945
MS6 Cable 3 x 4 + 1 G 4mm ² , 5m 5.5 - 9.2 kw		POA	96163690
MS6 Cable 3 x AWG 8 + 1 G AWG 8, 5m 11kw - 30kw		POA	96163691

Motor cables for SP pumps please call with pump / motor details, have different connections on motors



SQ, SQE - model B

				£	Product Code
Wear part kit	SQ(E)-N1-35 to 95			269	96479862
	SQ(E)-N1-110 to 155			435	96479864
	SQ(E)-N2- 35 to 70			241	96479866
	SQ(E)-N2- 85 to 130			333	96479868
	SQ(E)-NE2- 35 to 65			POA	96439551
	SQ(E)-NE2- 75 to 115			856	96439552
	SQ(E)-N3- 30 to 55			241	96479869
	SQ(E)-N3- 65 to 105			335	96479870
	SQ(E)-N5 15 to 35			248	96479871
	SQ(E)-N5 50 to 70			343	96479873
	SQ(E)-NE5 15 to 35			504	96439560
	SQ(E)-NE5 45 to 65			848	96439561
	SQ(E)-N7 15 to 55			246	96479874
	Valve casing complete	Standard			143
NE			216	96439570	
Motor cable model B	Standard	1.5 m	3x1.5 mm ²	60	96160869
		5 m	3x1.5 mm ²	POA	96160870
		10 m	3x1.5 mm ²	POA	96160871
	NE	1.5 m	3x12 AWG	POA	96160882
		5 m	3x12 AWG	POA	96160883
		10 m	3x12 AWG	POA	96160884



SQ pump

BOOSTERS SPARES

HYDRO 2000

	£	Product Code
PFU 2000/4 TIL MS, MSH (STANDARD PUMPS)	OBSOLETE	625234
PFU 2000/9 TIL MF,MFH,ME,MEH,MES(E PUMPS)	OBSOLETE	625243
PFU 2000 EPROM MS (FIXED)	SPECIAL ORDER ONLY	96591305
PFU 2000 EPROM ME (VARIABLE SPEED)	SPECIAL ORDER ONLY	96591307

HOME BOOSTER

	£	Product Code
Pump CM 3-4 I for 3.5 Bar	595	96934524
Pump CM 3-6 I for 4.5 Bar	716	96959353
PM2 Controller	205	96848740
8 Litre Pressure Vessel	63	96526321
Automatic Air Vent, Brass WRAS	43	97909984
22mm JG Plastic Service Valve	43	97563994
Ballcock & Overflow (Mains Inlet) Kit	194	97939412
Internal Hoses Kit (both models)	285	97939421

MINI MONOPRESS

	£	Product Code
SOLENOID PUMP ET508LA	POA	GBOP0001
PIPE KIT-MINI MONOPRESS WITHOUT HIGH/LOW	84	98155765
PIPE KIT-MINI MONOPRESS C/W HIGH/LOW P.S	119	98155768
PIPE KIT-MINI DUOPRESS C/W HIGH/LOW P.S	POA	98155769
WIRE KIT-MINI MONOPRESS WITHOUT HIGH/LOW	POA	98155781
WIRE KIT-MINI MONOPRESS C/W HIGH/LOW P.S	POA	98155784
WIRE KIT-MINI DUOPRESS C/W HIGH/LOW P.S	POA	98155787

IMPRESS

	£	Product Code
Pressure sensor RPS 0-10bar	31	97842228
Pressure sensor RPS 0-10bar complete with fittings and 1.2m cable	POA	96625387
Cabinet panel cpl. (programmed)	POA	98431258
Cabinet top and front panels	312	98675080
STD Control Panel 1 Pump	1,796	96982873
ADV Control Panel 1 Pump	1,949	96982872
ADV Control Panel 2 Pump	2,154	97549894
STD PLC Controller (programmed)	244	97773064
ADV PLC Controller (programmed)	368	97773065
Power Supply Unit	234	98674679
Touch-screen STD (programmed)	1,075	97924046
Touch-screen ADV (programmed)	1,075	97924045
Hoses kit	23	98675140
Single Pump Manifold	253	98675157
Dual Pump Manifold	333	98675158
Non-return valve 1/2" MI / 1/2" FI CIM32	40	GBNR0013
Low pressure switch XP73B642	97	GBPS2202
Control pressure switch BARKSDALE	POA	GBPS2201
Float switch	84	GBPS0070

PRESSURE SWITCHES

	£	Product Code
KPI 35 PRESSURE SWITCH (-0.2 - 8 BAR was Sopac)	201	GBPS0010
Press. switch. Telemechanique, 1 ph /sp	66	96578668

MISCELLANEOUS

	£	Product Code
Transducer 6 bar	POA	GBTD0006
Transducer 10 bar	POA	GBTD0010

BOOSTERS

	£	Product Code
Transducer 0-4 bar	111	99257373
Transducer 0-10 bar	111	99257835
Pressure Gauge	89	99327758
Booster Cable	46	99257837

MOTORS

MG

			£	Product Code
Bearing kit	6204.SYN/6201.SYN		30	96279730
	6304.SYN/6201.SYN		26	96279741
	6305.SYN/6205.SYN		37	96279794
	6306.SYN/6205.SYN		43	96279795
	6306.SYN/6206.SYN		44	96279796
	6308.SYN/6206.SYN		57	96279797
	7306.BE.SYN/6206.SYN		77	96279802
	7308.BE.SYN/6206.SYN		163	96279803
	6308.SYN/6206.SYN		71	96796600
	7308.BE.SYN/6206.SYN		114	96796642
	6309.Z.C4/6309.Z.C4		114	96796674
	7309.BE/6309.Z.C4		143	96796676
	6310.Z.C4/6310.Z.C4		143	96796811
	7310.BE/6310.Z.C4		157	96796812
	6308.SYN/7306.BE_SF		100	96830797
Shaft seal	MG 132 model F/H	V-ring (IP 55)	29	96843458
	MG 132 model F/H	Gamma ring (IP 66)	44	96796191
	MG 160	V-ring (IP 55)	44	96843459
	MG 160	Gamma ring (IP 66)	44	96796191
	MG 180	V-ring (IP 55)	49	96843460
	MG 180	Gamma ring (IP 66)	74	96796802
Terminal board	MG 132 model F/H, MG 160, MG 180		44	96796657
Terminal box cover	MG 132 model F/H		41	96279772
	MG 160, MG 180		68	96796659
Fan	MG 132 model F/H	Ø 128 mm	29	96796189
	MG 132 model F/H	Ø 158 mm	29	96796190
	MG 160	Ø 210 mm CW	62	96796654
	MG 160	Ø 215 mm CW	44	96796650
	MG 160	Ø 210 mm CCW	44	96796648
	MG 160	Ø 215 mm CCW	62	96796652
	MG 180	Ø 240 mm CW	53	96796790
	MG 180	Ø 270 mm CW	74	96796791
	MG 180	Ø 240 mm CCW	53	96796716
	MG 180	Ø 270 mm CCW	74	96796718
Grease nipple	MG 132 model F/H, MG 160, MG 180		35	96796671
Bearing cover	MG 160		35	96796664



MG motors

MOTORS

MGE - Model H, I and J

			£	Product Code
Ball bearing kit	6204.SYN/6204.SYN		53	98330603
	6304.SYN/6204.SYN		56	98330604
	6305.SYN/6204.SYN		59	98330605
	6306.SYN/6204.SYN		62	98330606
	6204.HYB/6204.HYB		308	98330608
	6304.HYB/6204.HYB		296	98330609
	6305.HYB/6204.HYB		398	98330610
	6306.HYB/6204.HYB		401	98330611
	6305.2Z.C3.SYN+6205		31	98881507
	6306.2Z.C3.SYN+6205		32	98881508
	6306.2Z.C3.SYN+6206		49	98881509
	6308.2Z.C3.SYN+6206		61	98881510
	6308.2Z.C3.SYN+6306		POA	99124389
	6308.2Z.C3.SYN+6206		58	98881521
	6309.Z.C3+6306		70	98881522
	6207.2Z.C3+6205		43	98881523
	7306+6206		97	98881524
	7308+6206		113	98881525
	6308+6306		74	99099338
	7309+6306		105	98881526
	6306.2Z.C3.SYN+7306		102	98881527
	6308.2Z.C3.SYN+7306		112	98881528
	6309.Z.C3+7306		118	98881529
	6309.2Z.C3+6306		141	99177551
Hybrid ball bearing kit	6305.2Z.C3.SYN+6205		318	98881530
	6306.2Z.C3.SYN+6205		318	98881531
	6306.2Z.C3.SYN+6206		335	98881532
	6308.2Z.C3.SYN+6206		514	98881533
	6308.2Z.C3.SYN+6206		508	98881534
	6308+6306		POA	99124391
	7306+6206		POA	98881537
	7308+6206		POA	98881538
	6306.2Z.C3.SYN+7306		731	98881540
	6308.2Z.C3.SYN+730		913	98881541
	6309.Z.C3+7306		2,018	98881542
	7309+6306		POA	99123455
Blanking plug, kit	Small		POA	99052475
	Large		POA	99052476
Shaft seal	MGE 71/80		34	98334779
	MGE 90		29	98334780
Cable glands	1xD7-14 & 2xD5		38	98337336
	1xD7-14 & 4xD5		40	98337337
	1xD7-14 & 6xD5		43	98337338
	10xD7-14		49	98337339
	10xD5 single entry		46	98337340
	10xD5 double entry		55	98337341
Cable glands adapter			61	98345796
Connector plugs			51	98403113
Cover for CIM			16	98330622
Fan	1500-2000 rpm	all models	58	98290123
	2900-4000 rpm	≤ 1.1kW	58	98290123
	2900-4000 rpm	> 1.1kW	58	98290124
	4000-5900 rpm	all models	58	98290123
Fan cover		all models	52	98330566

MGE - Model F

		£	Product Code
Connector plugs		49	96348923
TPED add-on card		315	96348931
Terminal box	11 kW	4,813	96348913
	15 to 22 kW	6,755	96348914

CONDITIONS OF SALE AND SERVICE

The Customer's attention is particularly drawn to the provisions of condition 13 (Warranty and Limitation of Liability)

1. INTERPRETATION

- 1.1 The definitions and rules of interpretation in this condition apply in these Conditions.

Agreement: the contract between Grundfos and the Customer for the supply of Equipment and/or Services in accordance with the Order and these Conditions
Business Day: a day other than a Saturday, Sunday or bank or public holiday in England when banks in London are open for non-automated business.

CDM Regulations: the Construction (Design and Management) Regulations 2015
Conditions: these terms and conditions as amended from time to time in accordance with condition 19.

Customer: the person, firm or company who purchases Equipment and/or Services from Grundfos.

Data Protection Legislation: all legislation and regulatory requirements in force from time to time relating to the use of personal data and the privacy of electronic communications, including, without limitation (i) any data protection legislation from time to time in force in the UK including the Data Protection Act 2018 or any successor legislation, as well as (ii) the General Data Protection Regulation (EU) 2016/679 and any other directly applicable European Union regulation relating to data protection and privacy (for so long as and to the extent that the law of the European Union has legal effect in the UK).

Delivery Location: the location set out in the Order for delivery of the Equipment and/or Services or such other location as the parties may agree.

Equipment: all equipment, materials, goods and/or products, or any part or parts thereof, supplied by Grundfos to the Customer under this Agreement or used by Grundfos or its subcontractors in the supply of the Services.

Equipment Specification: any specification for the Equipment, including any relevant plans or drawings, that is agreed in writing by the Customer and Grundfos.

Event of Default: any occurrence of the events set out in condition 17.1 or 17.2.

Force Majeure Event: acts, events, omissions or accidents beyond its reasonable control, including (without limitation) strikes, lock-outs or other industrial disputes (whether involving any supplier, contractor or agent of Grundfos or any other party beyond its reasonable control), failure of a utility service or transport network, act of God, war or threat of war, sabotage, riot, civil commotion, malicious damage, compliance with any law or governmental order, rule, regulation or direction, import or export embargoes, accident, breakdown of plant or machinery, fire, flood, storm or default of suppliers or subcontractors, difficulties in obtaining raw materials, labour, fuel, parts or machinery.

Grundfos: Grundfos Pumps Limited (Company No: 00805960) whose registered office is at Grovebury Road, Leighton Buzzard, Bedfordshire LU7 4TL.

Health and Safety File: the health and safety file required by the CDM Regulations.

In-put Material: all documents, information, tools and materials of the Customer required by Grundfos for the proper provision of the Services.

Intellectual Property Rights: patents, rights to inventions, copyright and related rights, trade marks, business names and domain names, rights in get-up, goodwill and the right to sue for passing off, rights in designs, database rights, rights to use, and protect the confidentiality of, confidential information (including know-how), and all other intellectual property rights, in each case whether registered or unregistered and including all applications and rights to apply for and be granted, renewals or extensions of, and rights to claim priority from, such rights and all similar or equivalent rights or forms of protection which subsist or will subsist now or in the future in any part of the world.

Maintenance Schedule: the maintenance schedule attached to the Order setting out the Services to be supplied by Grundfos to the Customer.

Order: the service support agreement or site visit request form in each case on Grundfos' standard terms (whichever is applicable) including any schedules attached to the service support agreement or site visit request form.

Payment Schedule: the payment schedule attached to the Order setting out the charges applicable for the provision of the Services by Grundfos to the Customer.

Premium Service: the service package in accordance with Grundfos' terms as set out in the Agreement.

Quotation: a written quotation issued by Grundfos.

Services: the services to be provided by Grundfos under this Agreement as set out in the Order or site visit request form together with any other services which Grundfos provides, or agrees to provide, to the Customer.

Site visit request form: Grundfos' Site Visit and Commissioning Request Form, or the equivalent internet log, which the Customer completes.

Time and Materials Rate: the rates set out in the Order.

Warranty: (Subject to condition 5.5) the warranty provided by Grundfos in respect of the Services as set out in condition 8.4 and Equipment as set out in condition 5.1 of these Conditions (as applicable).

Warranty Period: for product codes UPS2, UPS3, ALPHA1, ALPHA2, ALPHA3 and SCALIA2 the warranty period shall be 5 years from the date of the manufacture and in all other cases the warranty period shall be 24 months from installation or 30 months from the date of manufacture (whichever expires soonest).

- 1.2 Headings in these conditions shall not affect their interpretation.

- 1.3 A person includes a natural person, corporate or unincorporated body (whether or not having separate legal personality).

- 1.4 The schedules and annexes form part of this Agreement.

- 1.5 A reference to writing or written includes fax and email and electronic chat messages.

- 1.6 Any obligation in this Agreement on a person not to do something includes, without limitation, an obligation not to agree, allow, permit or acquiesce in that thing being done.

- 1.7 References to schedules and annexes are to the schedules and annexes of the Order.

- 1.8 A reference to a statute or statutory provision is a reference to it as amended or re-enacted. A reference to a statutory provision includes all subordinate legislation made under that statute or statutory provision.

2. Basis of Agreement

- 2.1 The Order constitutes an offer by the Customer to purchase Equipment and/or Services in accordance with these Conditions.

- 2.2 The Order shall only be deemed to be accepted on the earlier of:

(a) an authorised representative of Grundfos issues written acceptance of the Order; or

(b) Grundfos delivers the Equipment and/or commences providing Services to the Customer in line with the Order, at which point and on which the date this Agreement shall come into existence.

- 2.3 Any samples, drawings, descriptive matter or advertising issued by Grundfos and any descriptions of the Equipment or illustrations or descriptions of the Services contained in Grundfos' catalogues or brochures are issued or published for the sole purpose of giving an approximate idea of the Services and/or Equipment described in them.

No warranty or guarantee is given for their accuracy and they shall not form part of this Agreement or have any contractual force.

- 2.4 These Conditions shall:

(a) apply to and be incorporated into this Agreement;

(b) prevail over any other terms that the Customer seeks to impose or incorporate; and

(c) prevail over any terms or conditions implied by law, trade custom, practice or course of dealing between Grundfos, the Customer or otherwise.

- 2.5 These Conditions are subject to any terms, conditions and/or provisions set out in the Order. In the event of any conflict between the terms of these Conditions and the terms of the Order, the provisions of the Order shall prevail, but any special terms granted in respect of any one Order are not applicable to any subsequent Order without the express consent in writing by Grundfos.

- 2.6 Quotations shall only be valid if issued in writing.

- 2.7 Any Quotations are given on the basis that no Agreement shall come into existence except in accordance with condition 2.2. Any Quotation is valid for a period of 30 days from its date (unless otherwise agreed by Grundfos), provided that Grundfos has not previously withdrawn it.

- 2.8 All of these Conditions shall apply to the supply of both Equipment and Services except where application to one or the other is specified.

- 2.9 Any special terms agreed to by Grundfos for any Order shall not apply to any subsequent Order without the express agreement of an authorised representative of Grundfos.

- 2.10 The Customer is responsible for ensuring the accuracy of the terms of the Order and for providing to Grundfos in good time any necessary information required by Grundfos to enable Grundfos to perform its obligations under the Agreement.

- 2.11 Grundfos' minimum order value is £55.00. Orders between £55.00 and £335 for pumps or £130 for Category 4 items will be subject to a £37 handling fee.

3. Equipment

- 3.1 The Equipment is described in Grundfos' catalogues as modified in any Equipment Specification.

- 3.2 Unless confirmed in writing by Grundfos, Grundfos makes no representation as to the suitability of the Equipment for the Customer's particular purpose. The Customer will be responsible for ensuring that the Equipment is suitable for its particular purpose and Grundfos shall have no liability to the Customer if the Equipment is not suitable for the Customer's particular purpose (so far as legally possible).

- 3.3 Grundfos (and/or its subcontractors, suppliers or agents) reserves the right to:

(a) change the design, construction or composition of the Equipment or the materials or equipment used in the Equipment as it shall think fit; and

(b) amend the Equipment Specification of the Equipment if required by any applicable statutory requirements, and shall, in any case, notify the Customer of any such changes (if such changes are effected after this Agreement has come into existence but before the Equipment and/or Services have been fully performed).

- 3.4 Samples of Equipment are available for inspection at Grundfos' offices. The samples are ex-stock at the time of viewing and are without guarantee as to colour or dimensions at the time of delivery. The viewing of a sample does not create a sale by sample.

4. Delivery of Equipment

- 4.1 Grundfos shall deliver the Equipment to the Delivery Location.

- 4.2 Delivery of the Equipment shall be completed on:

(a) the completion of unloading of the Equipment at the Delivery Location or (in the absence of any specified Delivery Location by the Customer) upon Grundfos informing the Customer that the Equipment is ready; or

(b) (if the Customer or its agents and/or representatives elect to unload the Equipment themselves) upon Grundfos placing the Equipment at the disposal of the Customer, its agents or representatives at the agreed point.

- 4.3 Grundfos' obligation under condition 4.1 is limited to delivering the Equipment only as near to the Delivery Location as a safe hard road permits. The Customer is to provide to Grundfos, free of charge, reasonable assistance with unloading (unless the Customer elects to unload the Equipment itself).

- 4.4 Any dates quoted for delivery of the Equipment are approximate only, and the time of delivery is not of the essence. Grundfos shall not be liable for any delay (or any additional costs arising out of the delay) in delivery of the Equipment that is caused by a Force Majeure Event or the Customer's failure to provide Grundfos with adequate delivery instructions or any other instructions that are relevant to the supply of the Equipment.

- 4.5 The Equipment may be delivered in advance of the quoted delivery date upon giving reasonable notice to the Customer.

- 4.6 If the Customer fails to take delivery of the Equipment or fails to give Grundfos adequate delivery instructions at the time stated for delivery (otherwise than by reason of Grundfos' sole fault) then, without prejudice to any other right or remedy available to Grundfos:

(a) delivery of the Equipment shall be deemed to have been completed at 9.00am on the next Business Day following the day on which Grundfos notified the Customer that the Equipment was ready; and

(b) Grundfos may:

(i) Charge a re-delivery fee if delivery is rearranged by Grundfos and the Customer;

(ii) store the Equipment until actual delivery takes place, and charge the Customer for all related costs and expenses (including insurance) of such storage;

(iii) apply Grundfos' returns policy as set out in condition 6; or

(iv) sell the Equipment at the best price readily obtainable and (after deducting all reasonable storage and selling expenses) charge the Customer for any shortfall below the price payable by the Customer for the Equipment and Services (as applicable) under this Agreement.

- 4.7 If the parties have agreed on express delivery, the dates quoted for such delivery and agreed delivery dates are approximate only as delivery may vary due to factors not within Grundfos' reasonable control, e.g. leisurely or delayed customs clearance or other import or export obstacles. The parties agree that time of delivery is not of the essence and that Grundfos shall not be liable for any delay (or any additional costs arising out of the delay) in delivery caused by such events.

- 4.8 Grundfos may deliver the Equipment by instalments.

- 4.9 If Equipment is not received by the customer within 7 days of notification of dispatch by Grundfos or if it is received in a damaged condition or the quantity received differs from the quantity advised by Grundfos the Customer shall notify Grundfos in writing. If such written notice is not received by Grundfos within 10 days of the date of Grundfos' dispatch notification, Grundfos will not be liable in respect of any loss or damaged suffered.

- 4.10 If a proof of delivery is required a £10 handling fee will apply.

- 4.11 Proof of delivery shall only be retained by Grundfos for 3 months following delivery. After 3 months it shall be assumed by both parties that delivery successfully took place unless there is evidence to the contrary.

- 4.12 A £20 handling fee will apply per order to all orders for spares, pump components, spares kits and ancillary items such as flanges, unions etc.

5. **Quality of Equipment**
- 5.1 For the duration of the Warranty Period, Grundfos warrants that the Equipment shall:
- (a) (subject to conditions 5.3 and 5.4) conform in all material respects with the Equipment Specification; and
- (b) be free from defects in design, material and workmanship.
- 5.2 Subject to condition 5.3, if:
- (a) the Customer gives notice in writing during the Warranty Period within 14 days of discovery that some or all of the Equipment does not comply with the Warranty set out in condition 5.1;
- (b) Grundfos is given a reasonable opportunity to examine such Equipment; and
- (c) the Customer (if reasonably asked to do so by Grundfos) returns such Equipment to Grundfos (at Grundfos' cost), then Grundfos shall, at its option, repair or replace the defective Equipment, or refund the price of the defective Equipment in full. Repairs shall only be carried out between 8am and 5pm on Business Days agreed between Grundfos and Customer.
- 5.3 Grundfos shall not be liable for the Equipment's failure to comply with the Warranty if:
- (a) the Customer makes any further use of such Equipment after giving a notice in accordance with condition 5.2 unless otherwise approved by Grundfos (such approval not to be withheld unreasonably);
- (b) the defect arises because the Customer failed to follow Grundfos' or manufacturer's oral or written instructions as to the storage, installation, commissioning, use or maintenance of the Equipment or (if there are none) good trade practice;
- (c) the defect arises as a result of Grundfos following any drawing, design supplied by the Customer or the Equipment Specification;
- (d) the Customer alters, dismantles or repairs such Equipment without the written consent of Grundfos;
- (e) the defect arises as a result of fair wear and tear, wilful damage, negligence, or abnormal working conditions; or
- (f) the Equipment differs from its description as a result of changes made to ensure they comply with applicable statutory or regulatory standards.
- 5.4 Except as provided in this condition 5, Grundfos shall have no liability to the Customer in respect of the Equipment's failure to comply with the Warranty.
- 5.5 The terms of these Conditions shall apply to any repaired or replacement Equipment supplied by Grundfos under condition 5.2 but for the avoidance of doubt, the Warranty Period for any repaired or replaced Equipment shall be 12 months from the date of the repair.
6. **Return of Equipment**
- 6.1 Equipment may not be returned to Grundfos except by the prior written permission of an authorised representative of Grundfos. Contact grundfos-uk@sales.grundfos.com with the original purchase order number to arrange a return. Any such return shall be liable for any handling and restocking fees charged by Grundfos.
- 6.2 All Equipment requested to be returned to Grundfos will be subject to a minimum 35% restocking fee (subject to inspection). Equipment must be returned in its original packaging.
- 6.3 Equipment can only be returned within 6 months of the date of dispatch by Grundfos. All returns will be subject to inspection to ascertain age, condition and type.
- 6.4 Equipment returned without prior authorisation will be refused delivery by Grundfos.
- 6.5 The following Equipment cannot be returned for credit in any circumstance:
- (a) items with a net value of less than £125 (per item);
- (b) repair kits, power cable, engineered to order, third party sourced and obsolete items.
- 6.6 Any Equipment that has been in contact with hazardous liquids must be cleaned, sealed in appropriate packaging, clearly labelled and accompanied by a COSHH certification by the Customer. Any carrier used must be licensed to carry to transport the relevant hazardous liquids.
7. **Title and Risk**
- 7.1 The risk in the Equipment shall pass to the Customer on completion of delivery in accordance with condition 4.
- 7.2 Title to the Equipment shall not pass to the Customer until Grundfos receives payment in full (in cash or cleared funds) for the Equipment and any other equipment or goods that Grundfos has supplied to the Customer in respect of which payment has become due in which case title to the Equipment shall pass at the time of payment of all such sums.
- 7.3 Until title to the Equipment has passed to the Customer, the Customer shall:
- (a) hold the Equipment (or any receipts received from the Customer where the Customer has sold the Equipment) on a fiduciary basis as Grundfos' bailee;
- (b) store the Equipment separately from all other goods held by the Customer (where possible) so that they remain readily identifiable as Grundfos' property;
- (c) not remove, deface or obscure any identifying mark or packaging on or relating to the Equipment (unless reasonably required for the functioning use of the Equipment by the Customer);
- (d) maintain the Equipment in satisfactory condition and keep it insured against all risks for their full price on Grundfos' behalf from the date of delivery;
- (e) notify Grundfos immediately if the Customer becomes subject to any Event of Default;
- (f) give Grundfos such reasonable information relating to the Equipment as Grundfos may require from time to time;
- (g) give Grundfos at least 30 days' notice of its intention to move or relocate the Equipment to a new location. Grundfos may (at Grundfos' sole discretion) supervise the dismantling and removal of the Equipment, and inspect and reinstall the Equipment at the new location. Any supervision and work undertaken in respect of the relocation shall be charged at the prevailing Time and Material Rates and is payable by the Customer in accordance with condition 11; and
- (h) give Grundfos at least 14 days' notice of its intention to take any steps to appoint an administrator.
- 7.4 The Customer may incorporate the Equipment into or with any other goods provided that any new goods incorporating the Equipment shall become the sole and exclusive property of Grundfos and shall be separately stored and marked so as to be identifiable as being manufactured by or containing Equipment belonging to Grundfos.
- 7.5 Subject to condition 7.7, the Customer may resell the Equipment in the ordinary course of its business (but not otherwise) before Grundfos receives payment for the Equipment. However, if the Customer resells the Equipment before that time:
- (a) It does so as principal and not as Grundfos' agent;
- (b) Title to the Equipment shall pass from Grundfos to the Customer immediately before the time at which resale by the Customer occurs.
- 7.6 If before title to the Equipment passes to the Customer the Customer becomes subject to an Event of Default, then, without limiting any other right or remedy Grundfos may have, Grundfos may at any time:
- (a) the Customer's right to resell the Equipment or use it in the ordinary course of its business ceases immediately;
- (b) reasonably require the Customer to deliver up all Equipment in its possession; and
- (c) if the Customer fails to do so promptly, enter any premises of the Customer where the Equipment is stored in order to recover them; and
- (d) the Customer shall pay Grundfos' reasonable costs (including legal costs) for any recovery of the Equipment pursuant to condition 7.7(c).
8. **Supply of Services**
- 8.1 Grundfos shall provide the Services to the Customer in accordance with the Maintenance Schedule in all material respects and in accordance with the duration and timescales specified in the Order.
- 8.2 Grundfos shall use all reasonable endeavours to meet any performance dates for the Services specified in this Agreement, but any such dates shall be estimates only and time shall not be of the essence for the performance of the Services.
- 8.3 Grundfos shall have the right to make any changes to the Services which are necessary to comply with any applicable law or safety requirement, or which do not materially affect the nature or quality of the Services, and Grundfos shall notify the Customer in any such event. If Grundfos requests a change for any other reason, the Customer shall not unreasonably withhold or delay consent to it.
- 8.4 Grundfos warrants to the Customer that the Services will be provided using reasonable care and skill.
- 8.5 Grundfos shall use reasonable endeavours to observe all health and safety rules and regulations, and any other reasonable security requirements that apply at the Customer's premises and that have been communicated to it provided that it shall not be liable under this Agreement if, as a result of such observation, it is in breach of any of its obligations under this Agreement.
9. **Maintenance Service Times**
- 9.1 Services will be carried out during the working times as specified in the Maintenance Schedule.
- 9.2 Grundfos' standard daily fee rates for each individual person are calculated on the basis of an eight-hour day between 8.00am and 5.00pm on Business Days. Grundfos shall be entitled to charge for any Services undertaken outside of these hours at the Time and Materials Rate in effect at the relevant time.
- 9.3 Grundfos shall use reasonable endeavours to attend the Delivery Location, but if Grundfos is prevented by any reason outside his control or under the control of the Customer, from installing the Equipment or carrying out the Services at the time of the visit, it shall not constitute a material breach of this Agreement. If additional visits are required to the Delivery Location which are not accounted for in the Maintenance Schedule, Grundfos reserves the right to charge the Customer at the Time and Materials Rate for all additional time incurred.
10. **Customer's obligations**
- 10.1 The Customer shall:
- (a) ensure that the terms of the Order and the Equipment Specification are complete and accurate;
- (b) co-operate with Grundfos in all matters relating to this Agreement;
- (c) provide Grundfos, its employees, agents, consultants and subcontractors, with access to the Customer's premises, office accommodation and other facilities as reasonably required by Grundfos to provide the Services and/or deliver the Equipment;
- (d) prepare the Customer's premises (or the location where the Services are to be performed) for the supply of the Services and/or the Equipment;
- (e) provide adequate lighting, heating, power and ventilation as per Grundfos' reasonable requirements;
- (f) inform Grundfos' engineer or representative on each visit about any unsatisfactory running or irregular performance of the Equipment or equipment in respect of which the Services are undertaken.
- (g) ensure the Equipment is installed and kept in suitable premises and under suitable conditions, permit only trained and competent personnel to use it and follow any operating instructions as Grundfos may give from time to time;
- (h) provide a site visit request form to Grundfos in respect of any Services to be carried out by Grundfos, its agents, subcontractors, consultants or employees (as the case may be);
- (i) provide to Grundfos, in a timely manner, such In-put Material and other information as Grundfos may require and ensure that it is accurate in all material respects;
- (j) be responsible (at its own cost) for preparing and maintaining the relevant premises for the supply of the Services and/or Equipment, including identifying, monitoring, removing and disposing of any hazardous materials from its premises in accordance with all applicable laws, before and during the supply of the Services and/or Equipment at those premises;
- (k) inform Grundfos of all health and safety rules and regulations and any other reasonable security requirements that apply at the Customer's premises;
- (l) ensure that all In-Put Materials are in good working order and suitable for the purposes for which it is used in relation to the Services;
- (m) keep all Grundfos' materials, equipment, documents and other property (Grundfos Property) at the Customer's premises in safe custody at its own risk, keep all Grundfos Property in good condition until returned to Grundfos and not dispose of or use the Grundfos Property other than in accordance with Grundfos' written instructions and authorisations; and
- (n) obtain and maintain all necessary licences and consents and comply with all relevant legislation in relation to the Services, the installation of the Equipment and the use of In-put Material in all cases before the date on which the Services are to start.
- 10.2 If Grundfos' performance of any of its obligations in respect of the Services is prevented or delayed by any act or omission by the Customer (including its agents, subcontractors, consultants or employees) or failure by the Customer to perform any relevant obligation (Customer Default):
- (a) Grundfos shall without limiting its other rights or remedies have the right to suspend performance of the Services until the Customer remedies the Customer Default, and to rely on the Customer Default to relieve it from the performance of any of its obligations under this Agreement to the extent the Customer Default prevents or delays Grundfos' performance of any of its obligations;
- (b) Grundfos shall not be liable for any costs or losses sustained or incurred by the Customer arising directly or indirectly from Grundfos' failure or delay to perform any of its obligations as set out in this condition 10.2; and
- (c) the Customer shall reimburse Grundfos on written demand for any costs or losses sustained or incurred by Grundfos arising directly or indirectly from the Customer Default.
- 10.3 The Customer shall be liable to pay to Grundfos, on demand, all reasonable costs, charges or losses sustained or incurred by Grundfos (including, without limitation, any direct, indirect or consequential losses, loss of profit and loss of reputation, loss or damage to property and those arising from injury to or death of any person and loss of opportunity to deploy resources elsewhere) arising directly or indirectly from the Customer's fraud, negligence, failure to perform or delay in the performance of any of its obligations under this Agreement, subject to Grundfos confirming such costs, charges and losses to the Customer in writing.

10.4	The Customer shall not, without the prior written consent of Grundfos, at any time from the date of this Agreement to the expiry of 12 months after the last date of supply of the Services, solicit or entice away from Grundfos or employ (or attempt to employ) any person who is, or has been, engaged as an employee of Grundfos in the provision of the Services.	
11.	The CDM Regulations	
11.1	The Customer and Grundfos agree that the Customer is to be treated for the purposes of the CDM Regulations as the Client for the purposes of the CDM Regulations.	
11.2	The Customer agrees to ensure that the Works are carried out in accordance with the CDM Regulations.	
11.3	The Customer shall ensure that the Health and Safety File is maintained correctly and is available for inspection in accordance with the CDM Regulations.	
11.4	The Customer shall indemnify and keep the Owner indemnified against liability for any breach of the Customer's obligations under or in connection with this condition 11.	
12.	Charges and Payment	
12.1	The price for the Equipment shall be the price set out in the Order or, if no price is quoted, the price set out in the published price list of Grundfos (or Grundfos as the case may be) as at the date of delivery. Unless otherwise stated in the Order, the price of the Equipment is exclusive of all costs and charges of packaging, insurance, transport of the Equipment, which shall be paid by the Customer when it pays for the Equipment.	13.2
12.2	In the case of Product Services Service contracts, Installation Works and Engineered to Order products Grundfos reserves the right to request a deposit payment and/or payment milestones. The amount or means of calculating such payment shall be set out in the Quotation.	13.3
12.3	Grundfos reserves the right to require (at its option) a parent company guarantee or a personal guarantee from the directors of the Customer at any time in relation to all outstanding amounts due to Grundfos from the Customer from time to time.	13.4
12.4	The charges for Services shall be set out in the Payment Schedule.	13.5
12.5	Unless stated otherwise all prices are given on a DAP (delivered at place) basis.	
12.6	Grundfos reserves the right to: (a) increase its standard daily fee rates for the Services. Grundfos will give the Customer reasonable notice in writing of any such increase before the proposed date of the increase. If such increase is not acceptable to the Customer, it shall notify Grundfos in writing within 14 days of the date of Grundfos' notice and either of Grundfos or the Customer shall have the right, without limiting its other rights or remedies, to terminate this Agreement by giving 14 days' written notice (or any other reasonable notice period if performance of the Order is due to commence within 14 days) to Grundfos or Customer (as applicable); and (b) increase the price of the Equipment, by giving notice to the Customer at any time before delivery, to reflect any increase in the cost of the Equipment to Grundfos that is due to: (i) any factor beyond the control of Grundfos (including foreign exchange fluctuations, increases in taxes and customs' charges and duties, and increases in labour, materials, fuel and other manufacturing costs); (ii) any request by the Customer to change the delivery date(s), quantities or types of Equipment ordered, or the Equipment specification; or (iii) any delay caused by any instructions of the Customer in respect of the Equipment or failure of the Customer to give Grundfos adequate or accurate information or instructions in respect of the Equipment.	14.
12.7	In respect of Equipment, Grundfos shall invoice the Customer on or at any time after completion of delivery. If delivery of the Equipment is made in instalments, Grundfos may invoice the Customer in instalments. In respect of Services, Grundfos shall invoice the Customer in accordance with the Payment Schedule.	14.1
12.8	The Customer shall pay each invoice submitted by Grundfos: (a) within 30 days of the date of the invoice or in accordance with any other payment terms agreed by Grundfos in writing; and (b) in full and in cleared funds to a bank account nominated in writing by Grundfos, and time for payment shall be of the essence of this Agreement.	14.2
12.9	All amounts payable by the Customer under this Agreement are exclusive of amounts in respect of value added tax chargeable from time to time (VAT). The Customer shall pay any VAT which is chargeable on the supply of the Services and/or Equipment at the same time as payment is due for the supply of the Services and/or Equipment.	15.
12.10	Grundfos may in its sole discretion elect to provide a credit facility to the Customer but is not obliged to do so. Any credit facility offered will be on written terms agreed by Grundfos and the Customer.	15.1
12.11	Without prejudice to any other right or remedy that it may have, if the Customer fails to pay Grundfos on the due date, Grundfos may: (a) charge interest on such sum from the due date for payment at an annual rate equal to the set rate of interest provided under the Late Payment of Commercial Debt (Interest) Act 1998 as varied from time to time accruing on a daily basis and being compounded quarterly until payment is made, whether before or after any judgment and the Customer shall pay the interest immediately on demand; (b) charge compensation for late payment at a set rate depending on the size of the debt in accordance with the Late Payment of Commercial Debt Regulations 2002 (SI 2002 No 1674). The minimum charge applicable is £40.00, the maximum applicable is £100.00; (c) appropriate any payment by the Customer to any outstanding invoice as Grundfos may think fit not withstanding any purported appropriation by the Customer; and (d) suspend the provision of further Services until payment has been made in full.	15.2
12.12	The Customer shall pay all amounts due under this Agreement in full without any set-off, counterclaim, deduction or withholding except as required by law. Grundfos may, without limiting its other rights or remedies, set off any amount owing to it by the Customer against any amount payable by Grundfos to the Customer.	15.3
12.13	All sums payable to Grundfos under this Agreement shall become due immediately on its termination, despite any other provision. This condition 12.10 is without prejudice to any right to claim for interest under the law, or any such right under this Agreement.	15.4
12.14	Grundfos shall have a lien on all of the Customer's property in Grundfos' possession for all sums due at any time by the Customer to Grundfos subject to Grundfos giving not less than one month's written notice to the Customer. Grundfos shall be entitled to use, sell and dispose of any such property as agent for the Customer at the Customer's expense. The proceeds of such sale shall be applied towards the payment of monies due to Grundfos and Grundfos shall be discharged of any liability in relation to such property as a result of any sale.	16.
13.	Warranty and Limitation of Liability	16.1
13.1	<i>THE CUSTOMER'S ATTENTION IS SPECIFICALLY DRAWN TO THIS CONDITION</i> Nothing in these Conditions shall limit or exclude Grundfos' liability for: (a) death or personal injury caused by its negligence, or the negligence of its employees, agents or subcontractors; (b) fraud or fraudulent misrepresentation; (c) breach of the terms implied by section 2 of the Supply of Goods and Services Act 1982 (title and quiet possession); (d) breach of the terms implied by section 12 of the Sale of Goods Act 1979 (title and quiet possession); or (e) defective products under the Consumer Protection Act 1987.	16.2
	Subject to condition 13.1: (a) Grundfos shall under no circumstances whatsoever be liable to the Customer, whether in contract, tort (including negligence), breach of statutory duty, or otherwise, for any loss of profit, turnover, data, business opportunity, anticipated savings, any indirect or consequential loss or any damage to goodwill arising under or in connection with this Agreement; (b) Grundfos' total liability to the Customer where the Customer has provided Grundfos with incorrect weights, dimensions, capacity performance or other information shall in no circumstances exceed the price of the Equipment supplied in accordance with such incorrect information; and (c) Grundfos' total liability to the Customer in respect of all other losses arising under or in connection with this Agreement, whether in contract, tort (including negligence), breach of statutory duty, or otherwise, shall in no circumstances exceed £1million.	17.
	The terms implied by sections 13 to 15 of the Sale of Goods Act 1979 and the terms implied by sections 3 to 5 of the Supply of Goods and Services Act 1982 are, to the fullest extent permitted by law, excluded from this Agreement.	17.1
	This condition 13 shall survive termination of this Agreement.	
	The Customer shall indemnify Grundfos for any costs suffered by Grundfos for claims from any third party which arise by virtue of the Customer having resold the Equipment (unless such claim arises solely from Grundfos' negligence).	
	Confidentiality and Grundfos' property	
	Each party (receiving party) shall keep in strict confidence all technical or commercial know-how, specifications, inventions, processes or initiatives which are of a confidential nature and have been disclosed to the receiving party by the other party (disclosing party), its employees, agents or subcontractors, and any other confidential information concerning the disclosing party's business, its products and services which the receiving party may obtain. The receiving party shall only disclose such confidential information to those of its employees, agents and subcontractors who need to know it for the purpose of discharging the receiving party's obligations under this Agreement, and shall ensure that such employees, agents and subcontractors comply with the obligations set out in this condition as though they were a party to this Agreement. The receiving party may also disclose such of the disclosing party's confidential information as is required to be disclosed by law, any governmental or regulatory authority or by a court of competent jurisdiction. Neither party shall use the other's confidential information for any purpose other than to perform its obligations under this Agreement.	
	Intellectual Property Rights	
	(Subject to condition 15.2) all Intellectual Property Rights in or arising out of or in connection with: (a) the Equipment; (b) the Services; or (c) any manuals or documentation given by Grundfos to the Customer, shall be owned by Grundfos and nothing in this agreement shall transfer or assign any such Intellectual Property Rights to the Customer.	
	The Customer acknowledges that, in respect of any third party Intellectual Property Rights, the Customer's use of any such Intellectual Property Rights is conditional on Grundfos first obtaining a written licence from the relevant licensor on such terms as will entitle Grundfos to license such rights to the Customer.	
	The Customer grants to Grundfos a fully paid up, non-exclusive, royalty free, non-transferable licence to copy and modify any In-put Material for the purpose of providing the Services to the Customer.	
	The Customer shall indemnify Grundfos against all liabilities, costs, expenses, damages and losses (including any direct, indirect or consequential losses, loss of profit, loss of reputation and all interest, penalties and legal costs (on a full indemnity basis) and all other reasonable professional costs and expenses) suffered or incurred by Grundfos for actual or alleged infringement of a third party's Intellectual Property Rights arising out of or in connection with Grundfos' use of the Equipment Specification.	
	Data protection	
	Both parties will comply with all applicable requirements of the Data Protection Legislation. This condition 16 is in addition to, and does not relieve, remove or replace, a party's obligations under the Data Protection Legislation. In this condition 16 Applicable Laws means (for so long as and to the extent that they apply to the Supplier) the law of the European Union, the law of any member state of the European Union and/or Domestic UK Law; and Domestic UK Law means any Data Protection Legislation from time to time in force in the UK including the Data Protection Act 2018 or any successor legislation.	
	Without prejudice to the generality of condition 16.1 each party shall, in relation to any Personal Data processed in connection with the performance by that party of its obligations under the Agreement: (a) ensure that it has in place appropriate technical and organisational measures to protect against unauthorised or unlawful processing of Personal Data and against accidental loss or destruction of, or damage to, Personal Data, appropriate to the harm that might result from the unauthorised or unlawful processing or accidental loss, destruction or damage and the nature of the data to be protected, having regard to the state of technological development and the cost of implementing any measures (those measures may include, where appropriate, pseudonymising and encrypting Personal Data, ensuring confidentiality, integrity, availability and resilience of its systems and services, ensuring that availability of and access to Personal Data can be restored in a timely manner after an incident, and regularly assessing and evaluating the effectiveness of the technical and organisational measures adopted by it); (b) assist the other party, at the other party's cost, in responding to any request from a Data Subject and in ensuring compliance with its obligations under the Data Protection Legislation with respect to security, breach notifications, impact assessments and consultations with supervisory authorities or regulators; (c) notify the Customer without undue delay on becoming aware of a Personal Data breach; (d) at the written direction of the other party, delete or return Personal Data and copies thereof to the other party on termination of the agreement unless required by Applicable Law to store the Personal Data; and (e) maintain complete and accurate records and information to demonstrate its compliance with this condition 16.	
	Neither party consents to the other appointing any third-party processor of Personal Data under the Contract.	
	Termination	
	Without limiting its other rights or remedies, Grundfos or Customer may terminate this Agreement with immediate effect by giving written notice to the other party if: (a) the other party commits a material breach of its obligations under this Agreement and (if such breach is remediable) fails to remedy that breach within 7 days after receipt of written notice to do so;	

- (b) the other party takes any step or action in connection with its entering administration, provisional liquidation or any composition or arrangement with its creditors (other than in relation to a solvent restructuring), being wound up (whether voluntarily or by order of the court, unless for the purpose of a solvent restructuring), having a receiver appointed to any of its assets or ceasing to carry on business [or, if the step or action is taken in another jurisdiction, in connection with any analogous procedure in the relevant jurisdiction];
- (c) the other party suspends, or threatens to suspend, or ceases or threatens to cease to carry on all or a substantial part of its business; or
- (d) the other party's financial position deteriorates to such an extent that in the terminating party's opinion the other party's capability to adequately fulfil its obligations under the Contract has been placed in jeopardy.
- 17.2 Without limiting its other rights or remedies, Grundfos may terminate this Agreement with immediate effect by giving written notice to the Customer if:
- (a) there is a change of control of the Customer (as defined in section 574 of the Capital Allowances Act 2001);
- (b) the Customer is unable or unwilling to procure any guarantee required by Grundfos in accordance with condition 12.3; or
- (c) the Customer's financial position deteriorates to such an extent that in Grundfos' opinion the Customer's capability to adequately fulfil its obligations under the Contract has been placed in jeopardy or Customer fails to pay any amount due under this Agreement on the due date for payment.
- 17.3 Without limiting its other rights or remedies, Grundfos may suspend the supply of Services or all further deliveries of Equipment under this Agreement or any other agreement between the Customer and Grundfos if the Customer becomes subject to an Event of Default, or Grundfos reasonably believes that the Customer is about to become subject to any of them.
- 17.4 On termination of this Agreement for any reason:
- (a) the Customer shall immediately pay to Grundfos all of Grundfos' outstanding unpaid invoices and interest and, in respect of Services supplied but for which no invoice has yet been submitted, Grundfos shall submit an invoice, which shall be payable by the Customer immediately on receipt;
- (b) the Customer shall return all of Grundfos' materials and any deliverables which have not been fully paid for and which have not been installed as part of a bigger system. If the Customer fails to do so, then Grundfos may enter the Customer's premises and take possession of them. Until they have been returned, the Customer shall be solely responsible for their safe keeping and will not use them for any purpose not connected with this Agreement;
- (c) the accrued rights and remedies of the parties as at termination shall not be affected, including the right to claim damages in respect of any breach of this Agreement which existed at or before the date of termination or expiry;
- (d) conditions which expressly or by implication have effect after termination shall continue in full force and effect; and
- (e) Grundfos shall have a lien over all of the Customer's property in Grundfos' possession in respect of all sums due at any time from the Customer to Grundfos. Provided that Grundfos gives at least 14 days' prior written notice, Grundfos shall be entitled to use, sell and dispose of such property as agent for and at the expense of the Customer and apply the proceeds towards the payment of monies due and outstanding from the Customer to Grundfos. Thereafter, Grundfos shall be discharged of any liability in respect of the Customer's property.
- 17.5 On termination of this Agreement (however arising), any of these Conditions that expressly or by implication is intended to have effect after termination (or expiry) shall survive and continue in full force and effect.
18. **Force majeure**
Grundfos shall have no liability to the Customer under this Agreement if it is prevented from, or delayed in performing, its obligations under this Agreement or from carrying on its business by any Force Majeure Event.
19. **Variation**
Except as provided in these Conditions, no variation of this Agreement or these Conditions or of any of the documents referred to in them shall be valid unless it is in writing and signed by or on behalf of each of the authorised representatives of the parties.
20. **Waiver**
20.1 A waiver of any right under this Agreement is only effective if it is in writing and it applies only to the circumstances for which it is given. No failure or delay by a party in exercising any right or remedy under this Agreement or by law shall constitute a waiver of that (or any other) right or remedy, nor preclude or restrict its further exercise. No single or partial exercise of such right or remedy shall preclude or restrict the further exercise of that (or any other) right or remedy.
- 20.2 Unless specifically provided otherwise, rights arising under this Agreement are cumulative and do not exclude rights provided by law.
21. **Severance**
21.1 If any provision of this Agreement (or part of any provision) is found by any court or other authority of competent jurisdiction to be invalid, illegal or unenforceable, that provision or part-provision shall, to the extent required, be deemed not to form part of this Agreement, and the validity and enforceability of the other provisions of this Agreement shall not be affected.
- 21.2 If a provision of this Agreement (or part of any provision) is found illegal, invalid or unenforceable, the provision shall apply with the minimum modification necessary to make it legal, valid and enforceable.
22. **Entire agreement**
22.1 This Agreement constitutes the whole agreement between the parties and supersedes all previous agreements between the parties relating to its subject matter.
- 22.2 Each party acknowledges that, in entering into this Agreement, it has not relied on, and shall have no right or remedy in respect of, any statement, representation, assurance or warranty (whether made negligently or innocently) (other than for breach of contract), as expressly provided in this Agreement.
- 22.3 Nothing in this condition shall limit or exclude any liability for fraud.
23. **Assignment**
23.1 The Customer shall not, without the prior written consent of Grundfos, assign, transfer, charge, mortgage, subcontract or deal in any other manner with all or any of its rights or obligations under this Agreement.
- 23.2 Grundfos may at any time assign, transfer, charge, mortgage, subcontract or deal in any other manner with all or any of its rights under this Agreement and may subcontract or delegate in any manner any or all of its obligations under this Agreement to any third party or agent.
- 23.3 Each party that has rights under this Agreement is acting on its own behalf and not for the benefit of another person.
24. **No partnership or agency**
Nothing in this Agreement is intended to, or shall be deemed to, constitute a partnership or joint venture of any kind between any of the parties, nor constitute any party the agent of another party for any purpose. No party shall have authority to act as agent for, or to bind, the other party in any way.
25. **Rights of third parties**
A person who is not a party to this Agreement shall not have any rights under or in connection with it.
26. **Notices**
26.1 Any notice required to be given under this Agreement shall be in writing and shall be delivered personally, or sent by pre-paid first-class post, recorded delivery or by commercial courier to the registered office or the address stated in the Order (or as otherwise notified to the other party in writing).
- 26.2 Any notice shall be deemed to have been duly received if delivered personally, when left at the correct address or, if sent by pre-paid first-class post or recorded delivery, at 9.00am on the second Business Day after posting, or if delivered by commercial courier, on the date and at the time that the courier's delivery receipt is signed.
- 26.3 This condition 26 shall not apply to the service of any proceedings or other documents in any legal action.
- 26.4 A notice required to be given under this Agreement shall also be validly served if sent by e-mail.
27. **Governing law and jurisdiction**
27.1 This Agreement, and any dispute or claim arising out of or in connection with it or its subject matter or formation (including non-contractual disputes or claims), shall be governed by, and construed in accordance with, the law of England and Wales.
- 27.2 The parties irrevocably agree that the courts of England and Wales shall have exclusive jurisdiction to settle any dispute or claim that arises out of, or in connection with, this Agreement or its subject matter or formation (including non-contractual disputes or claims).

Notes

GRUNDFOS PUMPS LTD.
Grovebury Road
Leighton Buzzard
Beds LU7 4TL

Tel: 01525 850000
Email: grundfos-uk@sales.grundfos.com

www.grundfos.co.uk

